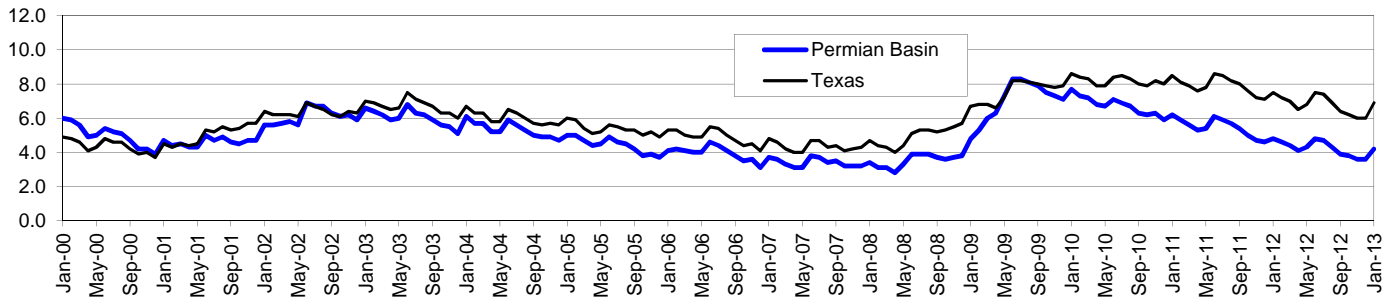


Permian Basin Workforce Development Area*

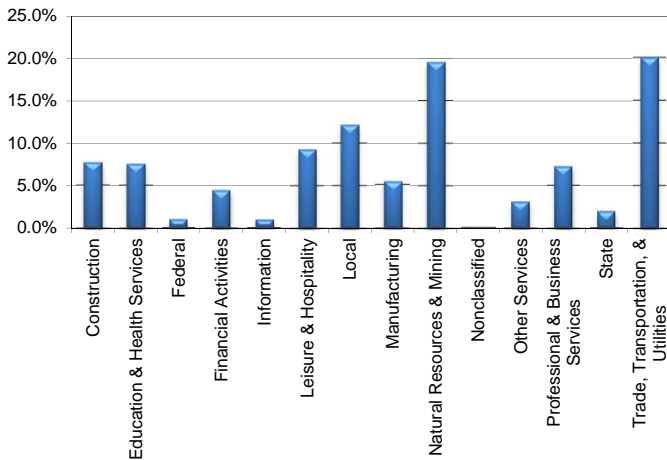
January 2013

Permian Basin WDA					Texas				
	CLF	Employed	Unemployed	Rate		CLF	Employed	Unemployed	Rate
Jan-13	247,556	237,094	10,462	4.2	Jan-13	12,655,394	11,782,758	872,636	6.9
Dec-12	245,702	236,877	8,825	3.6	Dec-12	12,634,533	11,870,344	764,189	6.0
Jan-12	234,222	223,032	11,190	4.8	Jan-12	12,486,708	11,552,047	934,661	7.5

Historical Unemployment Rates



Permian Basin WDA Industry Composition 3rd Quarter 2012



Total WDA Claims

Continued Claims for the Week of the 12th

	Jan-13	Dec-12	Jan-12	OTY
Continued	946	831	949	-3

Texas Unemployment Insurance Claims

Continued Claims for the Week of the 12th

	Jan-13	Dec-12	Jan-12	OTY
Continued	136,785	129,052	146,345	-9,560

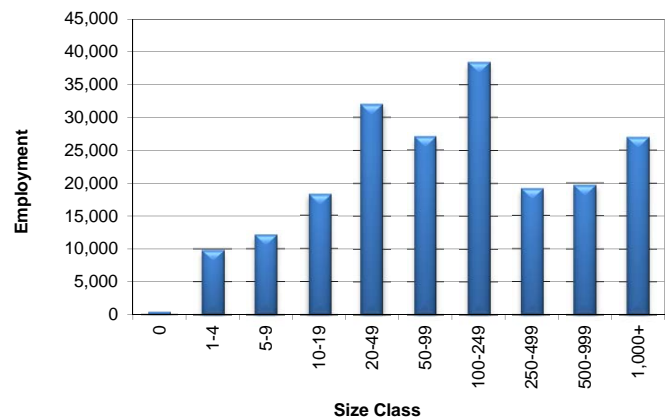
Permian Basin WDA Average Weekly Wage

	Permian Basin	Texas
3rd Quarter 2012	\$996.60	\$929.84
2nd Quarter 2012	\$981.80	\$922.14
3rd Quarter 2011	\$957.72	\$931.54
Quarter Change	\$14.80	\$7.70
OTY Change	\$38.88	-\$1.70

NAICS Covered Employment Quarterly Data 3rd Quarter 2012

SUPER SECTOR	Employment	Change	
		Quarter	Year
Construction	15,589	768	2,166
Education & Health Services	15,294	-44	18
Federal	1,959	27	-29
Financial Activities	8,885	263	895
Information	1,911	6	-108
Leisure & Hospitality	18,950	448	943
Local	24,754	-1,066	-359
Manufacturing	10,988	174	1,338
Natural Resources & Mining	39,850	1,312	5,450
Nonclassified	90	49	-43
Other Services	6,299	43	107
Professional & Business Services	14,751	144	868
State	3,863	-142	-103
Trade, Transportation, & Utilities	40,873	944	3,317
TOTAL	204,056	2,926	14,460

Size Class Employment Composition 3rd Quarter 2012



*Counties in WDA: Andrews, Borden, Crane, Dawson, Ector, Gaines, Glasscock, Howard, Loving, Martin, Midland, Pecos, Reeves, Terrell, Upton, Ward, & Winkler

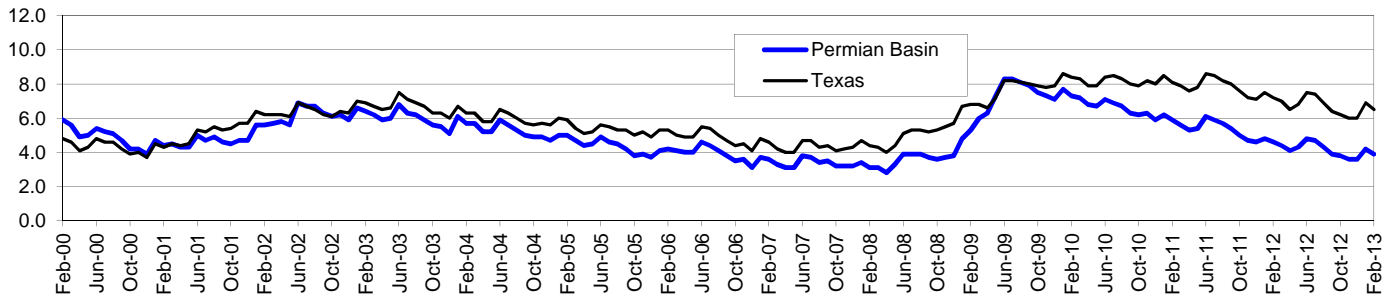
Area	Area Type	Latest Month				Month Ago				Year Ago			
		January				December				January			
		2013				2012				2012			
		Labor Force	Employment	Unemployment	Rate	Labor Force	Employment	Unemployment	Rate	Labor Force	Employment	Unemployment	Rate
Texas	State	12,655,394	11,782,758	872,636	6.9	12,634,533	11,870,344	764,189	6.0	12,486,708	11,552,047	934,661	7.5
Midland	MSA	93,142	89,948	3,194	3.4	92,254	89,593	2,661	2.9	86,496	83,084	3,412	3.9
Odessa	MSA	86,045	82,490	3,555	4.1	85,662	82,624	3,038	3.5	80,952	77,078	3,874	4.8
Permian Basin	WDA	247,556	237,094	10,462	4.2	245,702	236,877	8,825	3.6	234,222	223,032	11,190	4.8
Andrews	County	9,397	9,039	358	3.8	9,258	8,955	303	3.3	8,481	8,126	355	4.2
Borden	County	632	611	21	3.3	662	645	17	2.6	571	551	20	3.5
Crane	County	1,936	1,838	98	5.1	1,924	1,844	80	4.2	1,885	1,774	111	5.9
Dawson	County	5,289	4,908	381	7.2	5,233	4,916	317	6.1	5,389	4,974	415	7.7
Ector	County	86,045	82,490	3,555	4.1	85,662	82,624	3,038	3.5	80,952	77,078	3,874	4.8
Gaines	County	7,982	7,605	377	4.7	7,917	7,598	319	4.0	7,869	7,468	401	5.1
Glasscock	County	656	628	28	4.3	670	646	24	3.6	665	634	31	4.7
Howard	County	14,370	13,476	894	6.2	14,310	13,556	754	5.3	14,422	13,470	952	6.6
Loving	County	43	39	4	9.3	46	42	4	8.7	42	38	4	9.5
Martin	County	2,535	2,426	109	4.3	2,502	2,408	94	3.8	2,507	2,389	118	4.7
Midland	County	93,142	89,948	3,194	3.4	92,254	89,593	2,661	2.9	86,496	83,084	3,412	3.9
Pecos	County	9,069	8,617	452	5.0	8,806	8,454	352	4.0	8,941	8,504	437	4.9
Reeves	County	4,403	3,969	434	9.9	4,408	4,023	385	8.7	4,446	3,971	475	10.7
Terrell	County	422	392	30	7.1	414	386	28	6.8	392	364	28	7.1
Upton	County	1,966	1,894	72	3.7	2,003	1,943	60	3.0	1,916	1,833	83	4.3
Ward	County	5,824	5,554	270	4.6	5,862	5,632	230	3.9	5,548	5,260	288	5.2
Winkler	County	3,845	3,660	185	4.8	3,771	3,612	159	4.2	3,700	3,514	186	5.0
Big Spring	City	10,422	9,740	682	6.5	10,375	9,798	577	5.6	10,475	9,735	740	7.1
Midland	City	76,113	73,523	2,590	3.4	75,394	73,233	2,161	2.9	70,702	67,912	2,790	3.9
Odessa	City	63,005	60,416	2,589	4.1	62,707	60,507	2,200	3.5	59,226	56,440	2,786	4.7

Permian Basin Workforce Development Area*

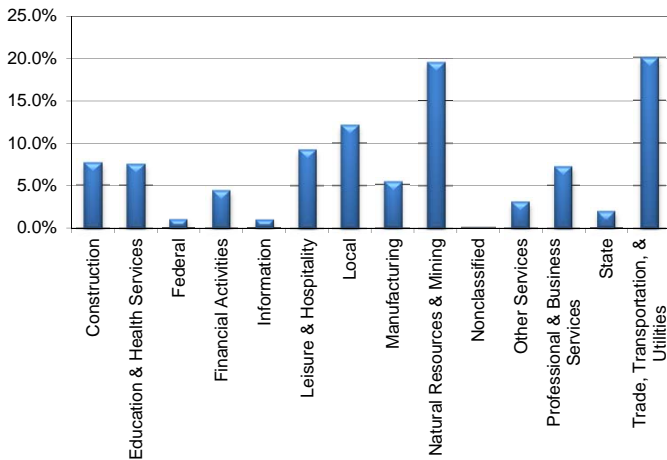
February 2013

Permian Basin WDA					Texas				
	CLF	Employed	Unemployed	Rate		CLF	Employed	Unemployed	Rate
Feb-13	247,900	238,172	9,728	3.9	Feb-13	12,662,626	11,845,578	817,048	6.5
Jan-13	247,543	237,085	10,458	4.2	Jan-13	12,655,050	11,782,494	872,556	6.9
Feb-12	235,283	224,561	10,722	4.6	Feb-12	12,520,764	11,613,053	907,711	7.2

Historical Unemployment Rates



Permian Basin WDA Industry Composition 3rd Quarter 2012



Total WDA Claims

Continued Claims for the Week of the 12th				
	Feb-13	Jan-13	Feb-12	OTY
Continued	924	947	892	32

Texas Unemployment Insurance Claims

Continued Claims for the Week of the 12th				
	Feb-13	Jan-13	Feb-12	OTY
Continued	127,660	136,959	135,910	-8,250

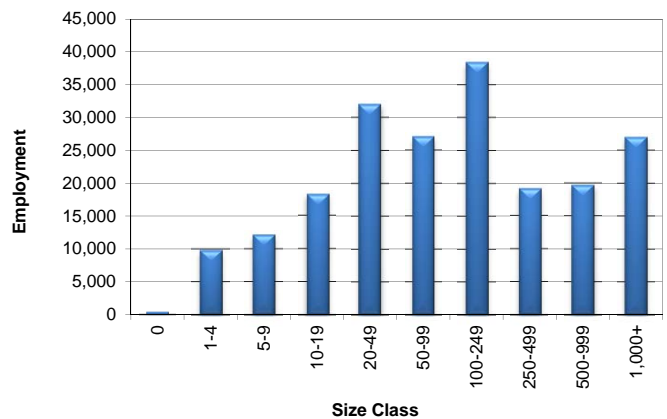
Permian Basin WDA Average Weekly Wage

	Permian Basin	Texas
3rd Quarter 2012	\$996.60	\$929.84
2nd Quarter 2012	\$981.80	\$922.14
3rd Quarter 2011	\$957.72	\$931.54
Quarter Change	\$14.80	\$7.70
OTY Change	\$38.88	-\$1.70

NAICS Covered Employment Quarterly Data 3rd Quarter 2012

SUPER SECTOR	Employment	Change	
		Quarter	Year
Construction	15,589	768	2,166
Education & Health Services	15,294	-44	18
Federal	1,959	27	-29
Financial Activities	8,885	263	895
Information	1,911	6	-108
Leisure & Hospitality	18,950	448	943
Local	24,754	-1,066	-359
Manufacturing	10,988	174	1,338
Natural Resources & Mining	39,850	1,312	5,450
Nonclassified	90	49	-43
Other Services	6,299	43	107
Professional & Business Services	14,751	144	868
State	3,863	-142	-103
Trade, Transportation, & Utilities	40,873	944	3,317
TOTAL	204,056	2,926	14,460

Size Class Employment Composition 3rd Quarter 2012



*Counties in WDA: Andrews, Borden, Crane, Dawson, Ector, Gaines, Glasscock, Howard, Loving, Martin, Midland, Pecos, Reeves, Terrell, Upton, Ward, & Winkler

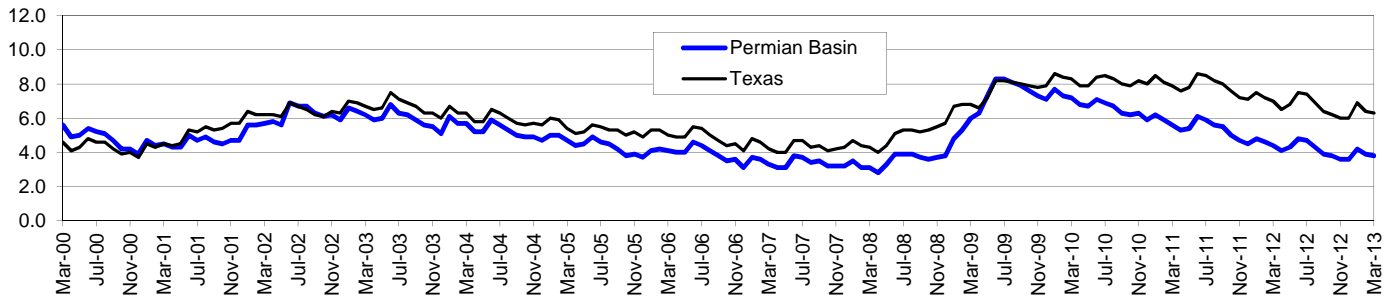
Area	Area Type	Latest Month				Month Ago				Year Ago			
		February				January				February			
		2013				2013				2012			
		Labor Force	Employment	Unemployment	Rate	Labor Force	Employment	Unemployment	Rate	Labor Force	Employment	Unemployment	Rate
Texas	State	12,662,626	11,845,578	817,048	6.5	12,655,050	11,782,494	872,556	6.9	12,520,764	11,613,053	907,711	7.2
Midland	MSA	93,318	90,334	2,984	3.2	93,109	89,915	3,194	3.4	87,222	83,961	3,261	3.7
Odessa	MSA	86,283	82,980	3,303	3.8	86,041	82,488	3,553	4.1	81,288	77,570	3,718	4.6
Permian Basin	WDA	247,900	238,172	9,728	3.9	247,543	237,085	10,458	4.2	235,283	224,561	10,722	4.6
Andrews	County	9,461	9,132	329	3.5	9,401	9,043	358	3.8	8,547	8,205	342	4.0
Borden	County	631	615	16	2.5	633	612	21	3.3	574	555	19	3.3
Crane	County	1,925	1,833	92	4.8	1,937	1,839	98	5.1	1,893	1,786	107	5.7
Dawson	County	5,225	4,864	361	6.9	5,292	4,911	381	7.2	5,355	4,940	415	7.7
Ector	County	86,283	82,980	3,303	3.8	86,041	82,488	3,553	4.1	81,288	77,570	3,718	4.6
Gaines	County	7,989	7,631	358	4.5	7,985	7,608	377	4.7	7,814	7,427	387	5.0
Glasscock	County	668	642	26	3.9	656	628	28	4.3	667	636	31	4.6
Howard	County	14,304	13,468	836	5.8	14,373	13,479	894	6.2	14,343	13,450	893	6.2
Loving	County	45	41	4	8.9	43	39	4	9.3	44	40	4	9.1
Martin	County	2,547	2,448	99	3.9	2,535	2,426	109	4.3	2,522	2,405	117	4.6
Midland	County	93,318	90,334	2,984	3.2	93,109	89,915	3,194	3.4	87,222	83,961	3,261	3.7
Pecos	County	9,016	8,619	397	4.4	9,072	8,620	452	5.0	9,002	8,567	435	4.8
Reeves	County	4,391	3,985	406	9.2	4,405	3,971	434	9.9	4,462	4,013	449	10.1
Terrell	County	433	403	30	6.9	421	392	29	6.9	400	372	28	7.0
Upton	County	1,975	1,909	66	3.3	1,967	1,895	72	3.7	1,906	1,835	71	3.7
Ward	County	5,819	5,568	251	4.3	5,826	5,557	269	4.6	5,514	5,243	271	4.9
Winkler	County	3,870	3,700	170	4.4	3,847	3,662	185	4.8	3,730	3,556	174	4.7
Big Spring	City	10,385	9,734	651	6.3	10,424	9,742	682	6.5	10,408	9,721	687	6.6
Midland	City	76,243	73,838	2,405	3.2	76,087	73,496	2,591	3.4	71,281	68,629	2,652	3.7
Odessa	City	63,164	60,772	2,392	3.8	63,001	60,414	2,587	4.1	59,475	56,805	2,670	4.5

Permian Basin Workforce Development Area*

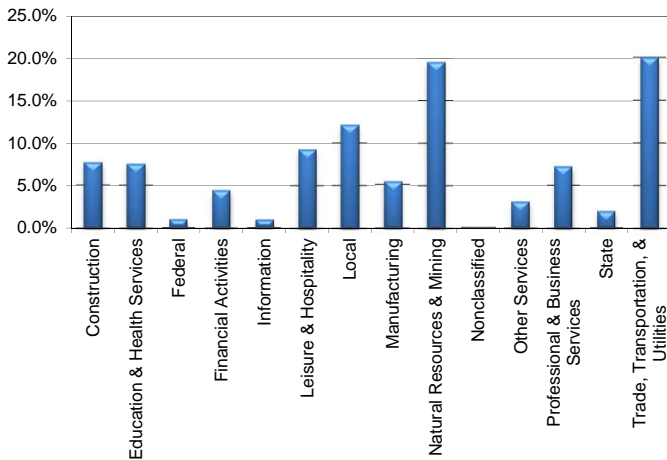
March 2013

Permian Basin WDA					Texas				
	CLF	Employed	Unemployed	Rate		CLF	Employed	Unemployed	Rate
Mar-13	248,606	239,077	9,529	3.8	Mar-13	12,686,094	11,885,771	800,323	6.3
Feb-13	247,786	238,073	9,713	3.9	Feb-13	12,662,092	11,845,698	816,394	6.4
Mar-12	236,387	226,098	10,289	4.4	Mar-12	12,548,713	11,671,807	876,906	7.0

Historical Unemployment Rates



Permian Basin WDA Industry Composition 3rd Quarter 2012



Total WDA Claims

Continued Claims for the Week of the 12th				
	Mar-13	Feb-13	Mar-12	OTY
Continued	899	932	896	3

Texas Unemployment Insurance Claims

Continued Claims for the Week of the 12th				
	Mar-13	Feb-13	Mar-12	OTY
Continued	127,877	128,829	133,295	-5,418

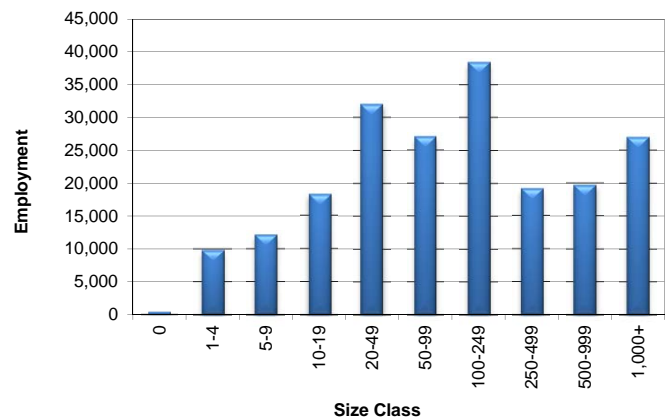
Permian Basin WDA Average Weekly Wage

	Permian Basin	Texas
3rd Quarter 2012	\$996.60	\$929.84
2nd Quarter 2012	\$981.80	\$922.14
3rd Quarter 2011	\$957.72	\$931.54
Quarter Change	\$14.80	\$7.70
OTY Change	\$38.88	-\$1.70

NAICS Covered Employment Quarterly Data 3rd Quarter 2012

SUPER SECTOR	Employment	Change	
		Quarter	Year
Construction	15,589	768	2,166
Education & Health Services	15,294	-44	18
Federal	1,959	27	-29
Financial Activities	8,885	263	895
Information	1,911	6	-108
Leisure & Hospitality	18,950	448	943
Local	24,754	-1,066	-359
Manufacturing	10,988	174	1,338
Natural Resources & Mining	39,850	1,312	5,450
Nonclassified	90	49	-43
Other Services	6,299	43	107
Professional & Business Services	14,751	144	868
State	3,863	-142	-103
Trade, Transportation, & Utilities	40,873	944	3,317
TOTAL	204,056	2,926	14,460

Size Class Employment Composition 3rd Quarter 2012



*Counties in WDA: Andrews, Borden, Crane, Dawson, Ector, Gaines, Glasscock, Howard, Loving, Martin, Midland, Pecos, Reeves, Terrell, Upton, Ward, & Winkler

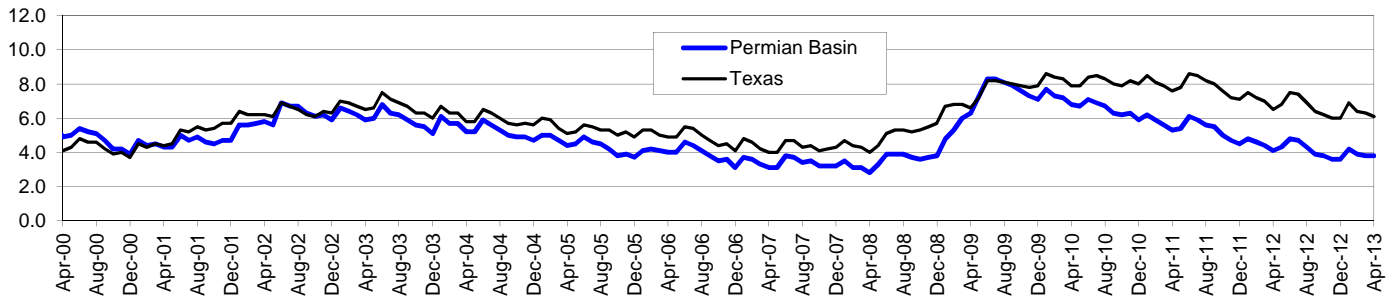
Area	Area Type	Latest Month				Month Ago				Year Ago			
		March				February				March			
		2013				2013				2012			
		Labor Force	Employment	Unemployment	Rate	Labor Force	Employment	Unemployment	Rate	Labor Force	Employment	Unemployment	Rate
Texas	State	12,686,094	11,885,771	800,323	6.3	12,662,092	11,845,698	816,394	6.4	12,548,713	11,671,807	876,906	7.0
Midland	MSA	93,450	90,536	2,914	3.1	93,154	90,177	2,977	3.2	87,565	84,445	3,120	3.6
Odessa	MSA	86,438	83,216	3,222	3.7	86,318	83,020	3,298	3.8	81,778	78,215	3,563	4.4
Permian Basin	WDA	248,606	239,077	9,529	3.8	247,786	238,073	9,713	3.9	236,387	226,098	10,289	4.4
Andrews	County	9,464	9,141	323	3.4	9,462	9,134	328	3.5	8,543	8,217	326	3.8
Borden	County	636	621	15	2.4	632	616	16	2.5	565	547	18	3.2
Crane	County	1,962	1,865	97	4.9	1,926	1,833	93	4.8	1,903	1,798	105	5.5
Dawson	County	5,228	4,879	349	6.7	5,225	4,865	360	6.9	5,371	4,980	391	7.3
Ector	County	86,438	83,216	3,222	3.7	86,318	83,020	3,298	3.8	81,778	78,215	3,563	4.4
Gaines	County	8,096	7,746	350	4.3	7,991	7,634	357	4.5	7,912	7,547	365	4.6
Glasscock	County	670	644	26	3.9	668	642	26	3.9	679	649	30	4.4
Howard	County	14,353	13,537	816	5.7	14,306	13,471	835	5.8	14,398	13,514	884	6.1
Loving	County	45	41	4	8.9	45	41	4	8.9	45	41	4	8.9
Martin	County	2,559	2,460	99	3.9	2,546	2,448	98	3.8	2,534	2,428	106	4.2
Midland	County	93,450	90,536	2,914	3.1	93,154	90,177	2,977	3.2	87,565	84,445	3,120	3.6
Pecos	County	9,055	8,650	405	4.5	9,020	8,622	398	4.4	8,956	8,529	427	4.8
Reeves	County	4,428	4,027	401	9.1	4,392	3,986	406	9.2	4,480	4,053	427	9.5
Terrell	County	434	404	30	6.9	433	403	30	6.9	407	381	26	6.4
Upton	County	1,985	1,919	66	3.3	1,976	1,910	66	3.3	1,898	1,831	67	3.5
Ward	County	5,896	5,645	251	4.3	5,821	5,570	251	4.3	5,581	5,326	255	4.6
Winkler	County	3,907	3,746	161	4.1	3,871	3,701	170	4.4	3,772	3,597	175	4.6
Big Spring	City	10,417	9,784	633	6.1	10,384	9,736	648	6.2	10,444	9,767	677	6.5
Midland	City	76,341	74,004	2,337	3.1	76,110	73,710	2,400	3.2	71,567	69,025	2,542	3.6
Odessa	City	63,267	60,945	2,322	3.7	63,189	60,799	2,390	3.8	59,851	57,275	2,576	4.3

Permian Basin Workforce Development Area*

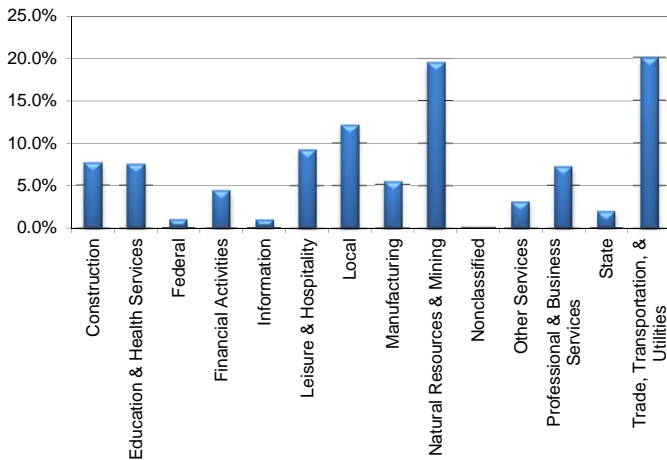
April 2013

Permian Basin WDA					Texas				
	CLF	Employed	Unemployed	Rate		CLF	Employed	Unemployed	Rate
Apr-13	249,096	239,740	9,356	3.8	Apr-13	12,736,120	11,955,418	780,702	6.1
Mar-13	248,726	239,209	9,517	3.8	Mar-13	12,685,594	11,885,778	799,816	6.3
Apr-12	238,155	228,450	9,705	4.1	Apr-12	12,541,233	11,721,272	819,961	6.5

Historical Unemployment Rates



Permian Basin WDA Industry Composition 3rd Quarter 2012



Total WDA Claims

Continued Claims for the Week of the 12th				
	Apr-13	Mar-13	Apr-12	OTY
Continued	910	907	803	107

Texas Unemployment Insurance Claims

Continued Claims for the Week of the 12th				
	Apr-13	Mar-13	Apr-12	OTY
Continued	124,483	128,994	126,440	-1,957

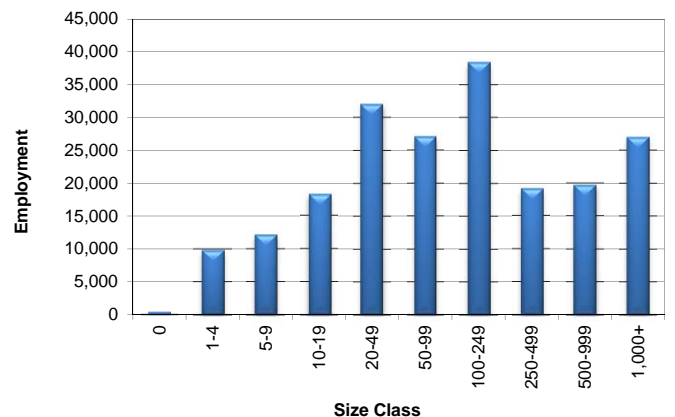
Permian Basin WDA Average Weekly Wage

	Permian Basin	Texas
3rd Quarter 2012	\$996.60	\$929.84
2nd Quarter 2012	\$981.80	\$922.14
3rd Quarter 2011	\$957.72	\$931.54
Quarter Change	\$14.80	\$7.70
OTY Change	\$38.88	-\$1.70

NAICS Covered Employment Quarterly Data 3rd Quarter 2012

SUPER SECTOR	Employment	Change	
		Quarter	Year
Construction	15,589	768	2,166
Education & Health Services	15,294	-44	18
Federal	1,959	27	-29
Financial Activities	8,885	263	895
Information	1,911	6	-108
Leisure & Hospitality	18,950	448	943
Local	24,754	-1,066	-359
Manufacturing	10,988	174	1,338
Natural Resources & Mining	39,850	1,312	5,450
Nonclassified	90	49	-43
Other Services	6,299	43	107
Professional & Business Services	14,751	144	868
State	3,863	-142	-103
Trade, Transportation, & Utilities	40,873	944	3,317
TOTAL	204,056	2,926	14,460

Size Class Employment Composition 3rd Quarter 2012



*Counties in WDA: Andrews, Borden, Crane, Dawson, Ector, Gaines, Glasscock, Howard, Loving, Martin, Midland, Pecos, Reeves, Terrell, Upton, Ward, & Winkler

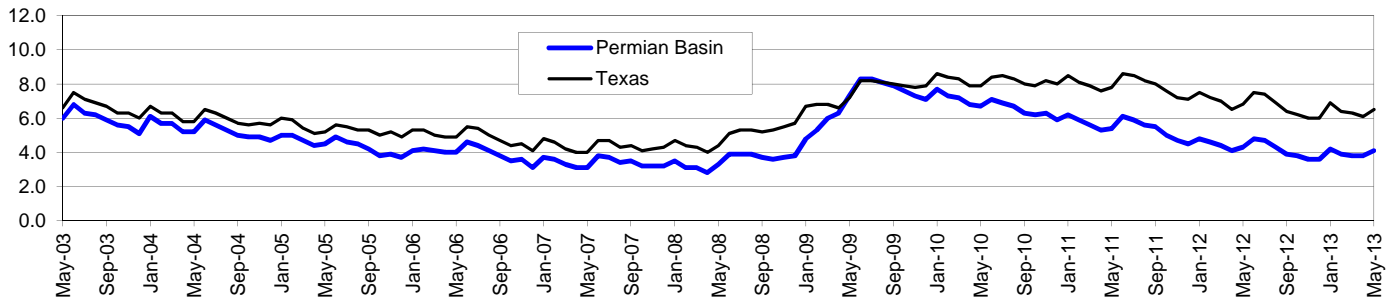
Area	Area Type	Latest Month				Month Ago				Year Ago			
		April				March				April			
		2013				2013				2012			
		Labor Force	Employment	Unemployment	Rate	Labor Force	Employment	Unemployment	Rate	Labor Force	Employment	Unemployment	Rate
Texas	State	12,736,120	11,955,418	780,702	6.1	12,685,594	11,885,778	799,816	6.3	12,541,233	11,721,272	819,961	6.5
Midland	MSA	94,321	91,463	2,858	3.0	93,491	90,583	2,908	3.1	88,607	85,646	2,961	3.3
Odessa	MSA	86,477	83,288	3,189	3.7	86,507	83,289	3,218	3.7	82,296	78,961	3,335	4.1
Permian Basin	WDA	249,096	239,740	9,356	3.8	248,726	239,209	9,517	3.8	238,155	228,450	9,705	4.1
Andrews	County	9,234	8,913	321	3.5	9,466	9,143	323	3.4	8,590	8,275	315	3.7
Borden	County	639	623	16	2.5	636	621	15	2.4	567	549	18	3.2
Crane	County	1,987	1,891	96	4.8	1,962	1,866	96	4.9	1,906	1,803	103	5.4
Dawson	County	5,276	4,935	341	6.5	5,229	4,880	349	6.7	5,384	5,015	369	6.9
Ector	County	86,477	83,288	3,189	3.7	86,507	83,289	3,218	3.7	82,296	78,961	3,335	4.1
Gaines	County	7,802	7,460	342	4.4	8,096	7,747	349	4.3	8,002	7,654	348	4.3
Glasscock	County	676	651	25	3.7	671	645	26	3.9	700	669	31	4.4
Howard	County	14,487	13,699	788	5.4	14,354	13,540	814	5.7	14,497	13,666	831	5.7
Loving	County	46	42	4	8.7	45	41	4	8.9	41	36	5	12.2
Martin	County	2,615	2,514	101	3.9	2,560	2,460	100	3.9	2,557	2,457	100	3.9
Midland	County	94,321	91,463	2,858	3.0	93,491	90,583	2,908	3.1	88,607	85,646	2,961	3.3
Pecos	County	8,816	8,436	380	4.3	9,055	8,651	404	4.5	8,845	8,459	386	4.4
Reeves	County	4,444	4,049	395	8.9	4,427	4,027	400	9.0	4,414	4,011	403	9.1
Terrell	County	438	409	29	6.6	434	404	30	6.9	422	398	24	5.7
Upton	County	1,973	1,906	67	3.4	1,986	1,919	67	3.4	1,957	1,895	62	3.2
Ward	County	5,991	5,748	243	4.1	5,899	5,646	253	4.3	5,629	5,382	247	4.4
Winkler	County	3,874	3,713	161	4.2	3,908	3,747	161	4.1	3,741	3,574	167	4.5
Big Spring	City	10,506	9,901	605	5.8	10,418	9,786	632	6.1	10,522	9,877	645	6.1
Midland	City	77,068	74,761	2,307	3.0	76,374	74,042	2,332	3.1	72,413	70,007	2,406	3.3
Odessa	City	63,295	61,008	2,287	3.6	63,318	60,999	2,319	3.7	60,250	57,825	2,425	4.0

Permian Basin Workforce Development Area*

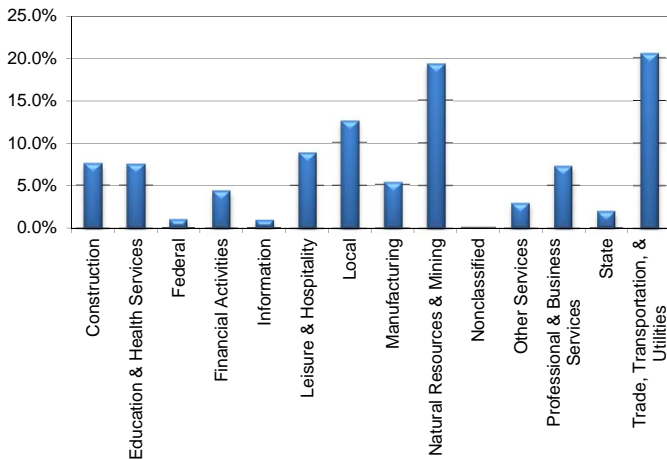
May 2013

Permian Basin WDA					Texas				
	CLF	Employed	Unemployed	Rate		CLF	Employed	Unemployed	Rate
May-13	249,553	239,232	10,321	4.1	May-13	12,794,742	11,963,825	830,917	6.5
Apr-13	248,793	239,448	9,345	3.8	Apr-13	12,735,605	11,955,472	780,133	6.1
May-12	240,280	229,993	10,287	4.3	May-12	12,594,147	11,735,304	858,843	6.8

Historical Unemployment Rates



Permian Basin WDA Industry Composition 4th Quarter 2012



Total WDA Claims

Continued Claims for the Week of the 12th

	May-13	Apr-13	May-12	OTY
Continued	958	916	801	157

Texas Unemployment Insurance Claims

Continued Claims for the Week of the 12th

	May-13	Apr-13	May-12	OTY
Continued	126,288	125,580	126,341	-53

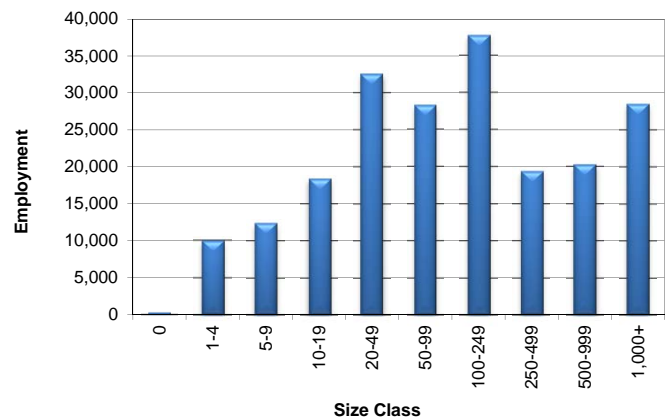
Permian Basin WDA Average Weekly Wage

	Permian Basin	Texas
4th Quarter 2012	\$1,124.67	\$1,026.84
3rd Quarter 2012	\$995.05	\$929.04
4th Quarter 2011	\$1,019.31	\$972.66
Quarter Change	\$129.62	\$97.80
OTY Change	\$105.36	\$54.18

NAICS Covered Employment Quarterly Data 4th Quarter 2012

SUPER SECTOR	Employment	Change	
		Quarter	Year
Construction	15,703	72	1,861
Education & Health Services	15,560	265	154
Federal	2,014	55	41
Financial Activities	8,967	72	796
Information	1,856	-43	-106
Leisure & Hospitality	18,421	-571	793
Local	26,131	1,373	-39
Manufacturing	10,999	28	1,286
Natural Resources & Mining	40,087	208	4,057
Nonclassified	114	40	59
Other Services	6,109	-189	42
Professional & Business Services	15,077	312	898
State	3,981	118	-55
Trade, Transportation, & Utilities	42,754	1,528	4,344
TOTAL	207,773	3,268	14,131

Size Class Employment Composition 4th Quarter 2012



*Counties in WDA: Andrews, Borden, Crane, Dawson, Ector, Gaines, Glasscock, Howard, Loving, Martin, Midland, Pecos, Reeves, Terrell, Upton, Ward, & Winkler

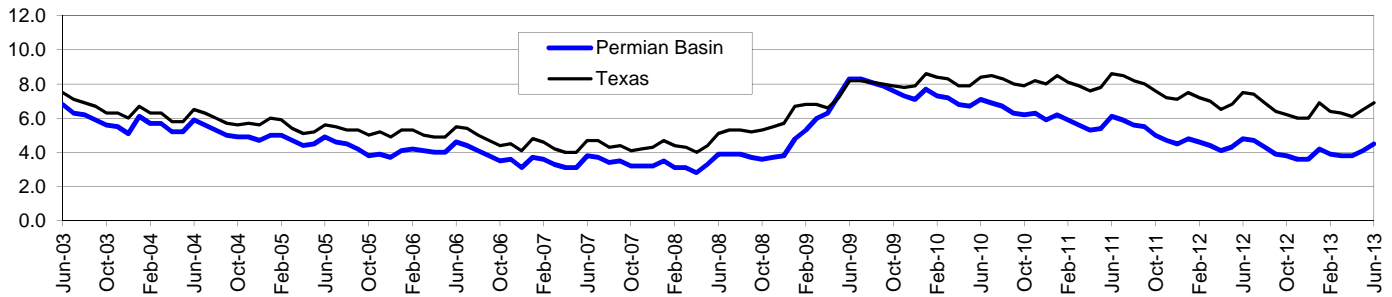
Area	Area Type	Latest Month				Month Ago				Year Ago			
		May				April				May			
		2013				2013				2012			
		Labor Force	Employment	Unemployment	Rate	Labor Force	Employment	Unemployment	Rate	Labor Force	Employment	Unemployment	Rate
Texas	State	12,794,742	11,963,825	830,917	6.5	12,735,605	11,955,472	780,133	6.1	12,594,147	11,735,304	858,843	6.8
Midland	MSA	94,139	90,962	3,177	3.4	94,008	91,153	2,855	3.0	89,531	86,344	3,187	3.6
Odessa	MSA	86,213	82,707	3,506	4.1	86,497	83,315	3,182	3.7	82,902	79,398	3,504	4.2
Permian Basin	WDA	249,553	239,232	10,321	4.1	248,793	239,448	9,345	3.8	240,280	229,993	10,287	4.3
Andrews	County	9,113	8,757	356	3.9	9,232	8,911	321	3.5	8,613	8,279	334	3.9
Borden	County	681	664	17	2.5	639	623	16	2.5	586	568	18	3.1
Crane	County	2,010	1,908	102	5.1	1,987	1,891	96	4.8	1,935	1,828	107	5.5
Dawson	County	5,430	5,039	391	7.2	5,275	4,935	340	6.4	5,448	5,062	386	7.1
Ector	County	86,213	82,707	3,506	4.1	86,497	83,315	3,182	3.7	82,902	79,398	3,504	4.2
Gaines	County	8,026	7,654	372	4.6	7,800	7,459	341	4.4	8,174	7,802	372	4.6
Glasscock	County	723	695	28	3.9	676	651	25	3.7	721	689	32	4.4
Howard	County	14,626	13,743	883	6.0	14,483	13,697	786	5.4	14,492	13,606	886	6.1
Loving	County	48	43	5	10.4	46	42	4	8.7	42	37	5	11.9
Martin	County	2,680	2,571	109	4.1	2,613	2,512	101	3.9	2,585	2,477	108	4.2
Midland	County	94,139	90,962	3,177	3.4	94,008	91,153	2,855	3.0	89,531	86,344	3,187	3.6
Pecos	County	8,912	8,501	411	4.6	8,816	8,435	381	4.3	8,885	8,479	406	4.6
Reeves	County	4,490	4,064	426	9.5	4,444	4,049	395	8.9	4,447	4,026	421	9.5
Terrell	County	459	431	28	6.1	438	409	29	6.6	446	420	26	5.8
Upton	County	1,999	1,926	73	3.7	1,973	1,906	67	3.4	1,988	1,920	68	3.4
Ward	County	6,132	5,870	262	4.3	5,993	5,748	245	4.1	5,762	5,507	255	4.4
Winkler	County	3,872	3,697	175	4.5	3,873	3,712	161	4.2	3,723	3,551	172	4.6
Big Spring	City	10,620	9,933	687	6.5	10,503	9,899	604	5.8	10,518	9,834	684	6.5
Midland	City	76,936	74,352	2,584	3.4	76,810	74,508	2,302	3.0	73,135	70,577	2,558	3.5
Odessa	City	63,097	60,584	2,513	4.0	63,306	61,024	2,282	3.6	60,708	58,148	2,560	4.2

Permian Basin Workforce Development Area*

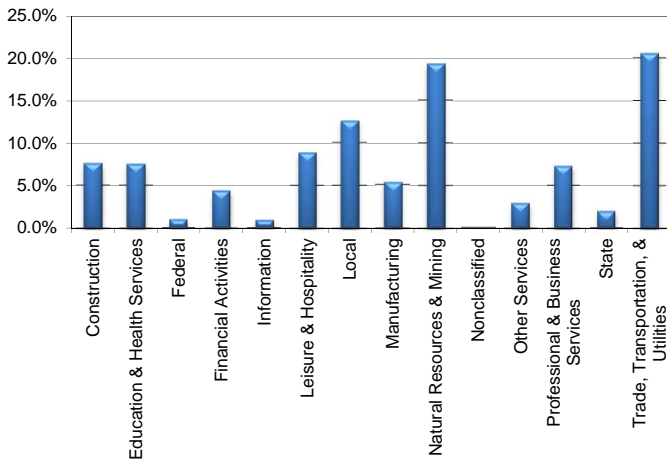
June 2013

Permian Basin WDA					Texas				
	CLF	Employed	Unemployed	Rate		CLF	Employed	Unemployed	Rate
Jun-13	251,145	239,762	11,383	4.5	Jun-13	12,847,840	11,957,005	890,835	6.9
May-13	249,430	239,128	10,302	4.1	May-13	12,793,931	11,963,749	830,182	6.5
Jun-12	241,818	230,173	11,645	4.8	Jun-12	12,684,279	11,738,140	946,139	7.5

Historical Unemployment Rates



Permian Basin WDA Industry Composition 4th Quarter 2012



Total WDA Claims

Continued Claims for the Week of the 12th				
	Jun-13	May-13	Jun-12	OTY
Continued	1,082	966	920	162

Texas Unemployment Insurance Claims

Continued Claims for the Week of the 12th				
	Jun-13	May-13	Jun-12	OTY
Continued	132,932	127,373	138,074	-5,142

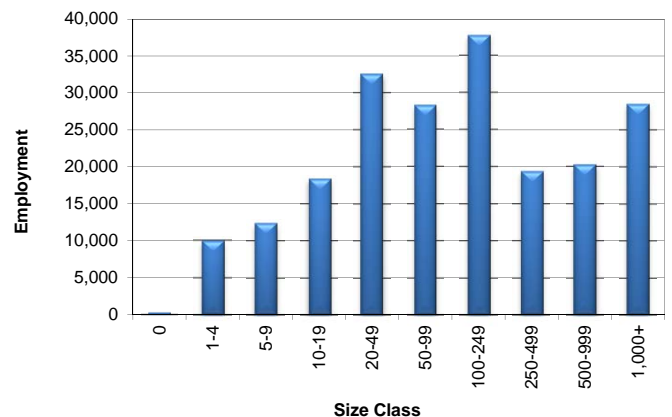
Permian Basin WDA Average Weekly Wage

	Permian Basin	Texas
4th Quarter 2012	\$1,124.67	\$1,026.84
3rd Quarter 2012	\$995.05	\$929.04
4th Quarter 2011	\$1,019.31	\$972.66
Quarter Change	\$129.62	\$97.80
OTY Change	\$105.36	\$54.18

NAICS Covered Employment Quarterly Data 4th Quarter 2012

SUPER SECTOR	Employment	Change	
		Quarter	Year
Construction	15,703	72	1,861
Education & Health Services	15,560	265	154
Federal	2,014	55	41
Financial Activities	8,967	72	796
Information	1,856	-43	-106
Leisure & Hospitality	18,421	-571	793
Local	26,131	1,373	-39
Manufacturing	10,999	28	1,286
Natural Resources & Mining	40,087	208	4,057
Nonclassified	114	40	59
Other Services	6,109	-189	42
Professional & Business Services	15,077	312	898
State	3,981	118	-55
Trade, Transportation, & Utilities	42,754	1,528	4,344
TOTAL	207,773	3,268	14,131

Size Class Employment Composition 4th Quarter 2012



*Counties in WDA: Andrews, Borden, Crane, Dawson, Ector, Gaines, Glasscock, Howard, Loving, Martin, Midland, Pecos, Reeves, Terrell, Upton, Ward, & Winkler

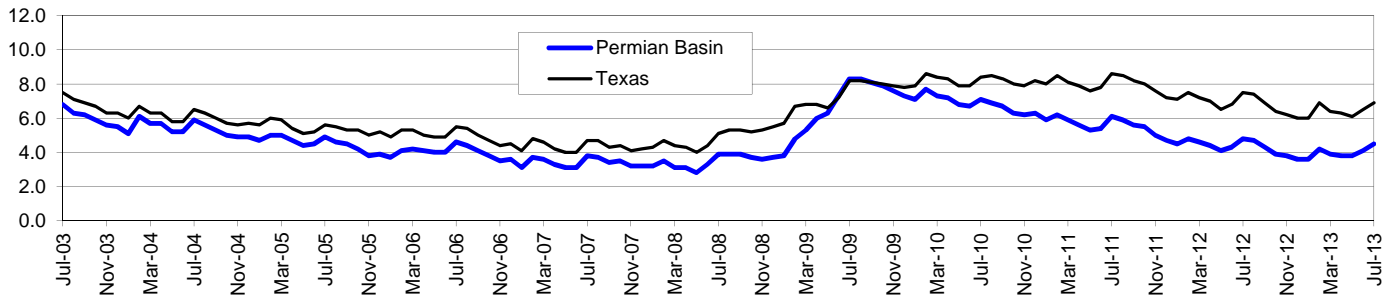
Area	Area Type	Latest Month				Month Ago				Year Ago			
		June				May				June			
		2013				2013				2012			
		Labor Force	Employment	Unemployment	Rate	Labor Force	Employment	Unemployment	Rate	Labor Force	Employment	Unemployment	Rate
Texas	State	12,847,840	11,957,005	890,835	6.9	12,793,931	11,963,749	830,182	6.5	12,684,279	11,738,140	946,139	7.5
Midland	MSA	94,953	91,457	3,496	3.7	93,835	90,664	3,171	3.4	89,939	86,349	3,590	4.0
Odessa	MSA	86,301	82,418	3,883	4.5	86,421	82,919	3,502	4.1	83,213	79,221	3,992	4.8
Permian Basin	WDA	251,145	239,762	11,383	4.5	249,430	239,128	10,302	4.1	241,818	230,173	11,645	4.8
Andrews	County	9,110	8,718	392	4.3	9,110	8,755	355	3.9	8,725	8,347	378	4.3
Borden	County	702	683	19	2.7	681	664	17	2.5	603	585	18	3.0
Crane	County	2,055	1,945	110	5.4	2,011	1,908	103	5.1	1,980	1,857	123	6.2
Dawson	County	5,461	5,038	423	7.7	5,427	5,037	390	7.2	5,497	5,082	415	7.5
Ector	County	86,301	82,418	3,883	4.5	86,421	82,919	3,502	4.1	83,213	79,221	3,992	4.8
Gaines	County	8,139	7,710	429	5.3	8,023	7,652	371	4.6	8,309	7,884	425	5.1
Glasscock	County	749	718	31	4.1	722	694	28	3.9	749	714	35	4.7
Howard	County	14,737	13,765	972	6.6	14,619	13,738	881	6.0	14,616	13,593	1,023	7.0
Loving	County	50	45	5	10.0	48	43	5	10.4	41	36	5	12.2
Martin	County	2,689	2,567	122	4.5	2,676	2,568	108	4.0	2,597	2,477	120	4.6
Midland	County	94,953	91,457	3,496	3.7	93,835	90,664	3,171	3.4	89,939	86,349	3,590	4.0
Pecos	County	8,925	8,481	444	5.0	8,910	8,499	411	4.6	8,898	8,454	444	5.0
Reeves	County	4,554	4,085	469	10.3	4,489	4,064	425	9.5	4,562	4,080	482	10.6
Terrell	County	461	435	26	5.6	459	431	28	6.1	458	432	26	5.7
Upton	County	2,052	1,970	82	4.0	1,997	1,925	72	3.6	2,016	1,944	72	3.6
Ward	County	6,261	5,970	291	4.6	6,131	5,870	261	4.3	5,885	5,590	295	5.0
Winkler	County	3,946	3,757	189	4.8	3,871	3,697	174	4.5	3,730	3,528	202	5.4
Big Spring	City	10,710	9,949	761	7.1	10,614	9,929	685	6.5	10,609	9,824	785	7.4
Midland	City	77,592	74,756	2,836	3.7	76,684	74,108	2,576	3.4	73,492	70,581	2,911	4.0
Odessa	City	63,146	60,382	2,764	4.4	63,247	60,734	2,513	4.0	60,921	58,021	2,900	4.8

Permian Basin Workforce Development Area*

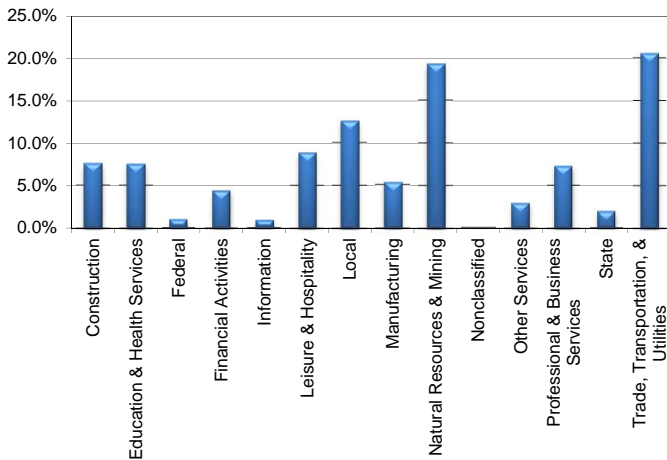
July 2013

Permian Basin WDA					Texas				
	CLF	Employed	Unemployed	Rate		CLF	Employed	Unemployed	Rate
Jul-13	254,238	243,332	10,906	4.3	Jul-13	12,869,362	12,011,285	858,077	6.7
Jun-13	251,442	240,072	11,370	4.5	Jun-13	12,847,607	11,957,473	890,134	6.9
Jul-12	244,320	232,764	11,556	4.7	Jul-12	12,663,439	11,729,002	934,437	7.4

Historical Unemployment Rates



Permian Basin WDA Industry Composition 4th Quarter 2012



Total WDA Claims

Continued Claims for the Week of the 12th

	Jul-13	Jun-13	Jul-12	OTY
Continued	1,061	1,093	928	133

Texas Unemployment Insurance Claims

Continued Claims for the Week of the 12th

	Jul-13	Jun-13	Jul-12	OTY
Continued	139,507	134,088	142,604	-3,097

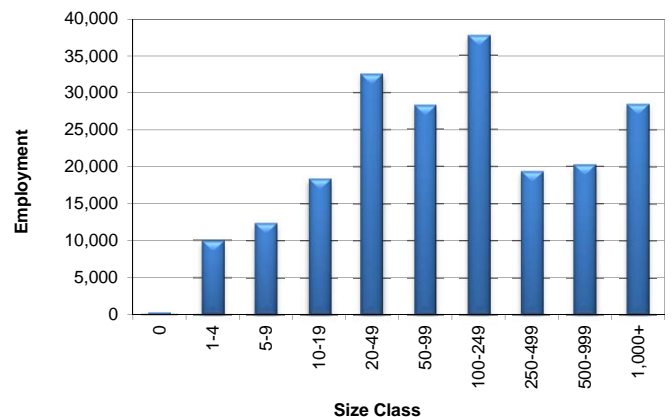
Permian Basin WDA Average Weekly Wage

	Permian Basin	Texas
4th Quarter 2012	\$1,124.67	\$1,026.84
3rd Quarter 2012	\$995.05	\$929.04
4th Quarter 2011	\$1,019.31	\$972.66
Quarter Change	\$129.62	\$97.80
OTY Change	\$105.36	\$54.18

NAICS Covered Employment Quarterly Data 4th Quarter 2012

SUPER SECTOR	Employment	Change	
		Quarter	Year
Construction	15,703	72	1,861
Education & Health Services	15,560	265	154
Federal	2,014	55	41
Financial Activities	8,967	72	796
Information	1,856	-43	-106
Leisure & Hospitality	18,421	-571	793
Local	26,131	1,373	-39
Manufacturing	10,999	28	1,286
Natural Resources & Mining	40,087	208	4,057
Nonclassified	114	40	59
Other Services	6,109	-189	42
Professional & Business Services	15,077	312	898
State	3,981	118	-55
Trade, Transportation, & Utilities	42,754	1,528	4,344
TOTAL	207,773	3,268	14,131

Size Class Employment Composition 4th Quarter 2012



*Counties in WDA: Andrews, Borden, Crane, Dawson, Ector, Gaines, Glasscock, Howard, Loving, Martin, Midland, Pecos, Reeves, Terrell, Upton, Ward, & Winkler

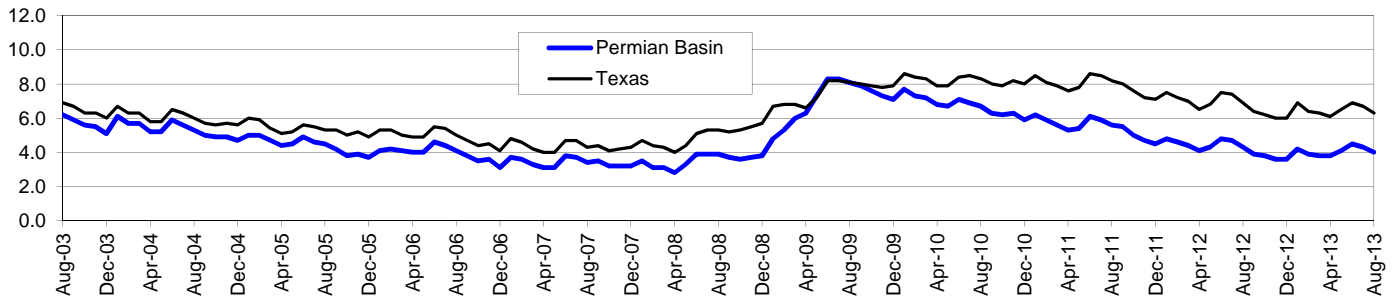
Area	Area Type	Latest Month				Month Ago				Year Ago			
		July				June				July			
		2013				2013				2012			
		Labor Force	Employment	Unemployment	Rate	Labor Force	Employment	Unemployment	Rate	Labor Force	Employment	Unemployment	Rate
Texas	State	12,869,362	12,011,285	858,077	6.7	12,847,607	11,957,473	890,134	6.9	12,663,439	11,729,002	934,437	7.4
Midland	MSA	96,346	92,992	3,354	3.5	94,966	91,475	3,491	3.7	91,534	87,962	3,572	3.9
Odessa	MSA	87,428	83,737	3,691	4.2	86,574	82,693	3,881	4.5	83,882	79,922	3,960	4.7
Permian Basin	WDA	254,238	243,332	10,906	4.3	251,442	240,072	11,370	4.5	244,320	232,764	11,556	4.7
Andrews	County	9,157	8,785	372	4.1	9,119	8,728	391	4.3	8,907	8,530	377	4.2
Borden	County	638	620	18	2.8	702	683	19	2.7	596	579	17	2.9
Crane	County	2,015	1,914	101	5.0	2,006	1,895	111	5.5	1,974	1,858	116	5.9
Dawson	County	5,337	4,939	398	7.5	5,465	5,043	422	7.7	5,344	4,941	403	7.5
Ector	County	87,428	83,737	3,691	4.2	86,574	82,693	3,881	4.5	83,882	79,922	3,960	4.7
Gaines	County	8,193	7,773	420	5.1	8,147	7,718	429	5.3	8,286	7,867	419	5.1
Glasscock	County	767	736	31	4.0	750	719	31	4.1	745	710	35	4.7
Howard	County	15,070	14,125	945	6.3	14,750	13,780	970	6.6	14,594	13,580	1,014	6.9
Loving	County	51	46	5	9.8	50	45	5	10.0	47	42	5	10.6
Martin	County	2,729	2,617	112	4.1	2,690	2,569	121	4.5	2,617	2,490	127	4.9
Midland	County	96,346	92,992	3,354	3.5	94,966	91,475	3,491	3.7	91,534	87,962	3,572	3.9
Pecos	County	8,928	8,494	434	4.9	8,868	8,425	443	5.0	8,964	8,533	431	4.8
Reeves	County	4,690	4,236	454	9.7	4,617	4,149	468	10.1	4,629	4,144	485	10.5
Terrell	County	465	442	23	4.9	462	436	26	5.6	460	433	27	5.9
Upton	County	2,087	2,010	77	3.7	2,053	1,972	81	3.9	2,080	2,003	77	3.7
Ward	County	6,406	6,124	282	4.4	6,272	5,981	291	4.6	5,916	5,626	290	4.9
Winkler	County	3,931	3,742	189	4.8	3,951	3,761	190	4.8	3,745	3,544	201	5.4
Big Spring	City	10,949	10,209	740	6.8	10,719	9,959	760	7.1	10,587	9,815	772	7.3
Midland	City	78,721	76,011	2,710	3.4	77,602	74,771	2,831	3.6	74,806	71,900	2,906	3.9
Odessa	City	63,984	61,350	2,634	4.1	63,341	60,581	2,760	4.4	61,401	58,545	2,856	4.7

Permian Basin Workforce Development Area*

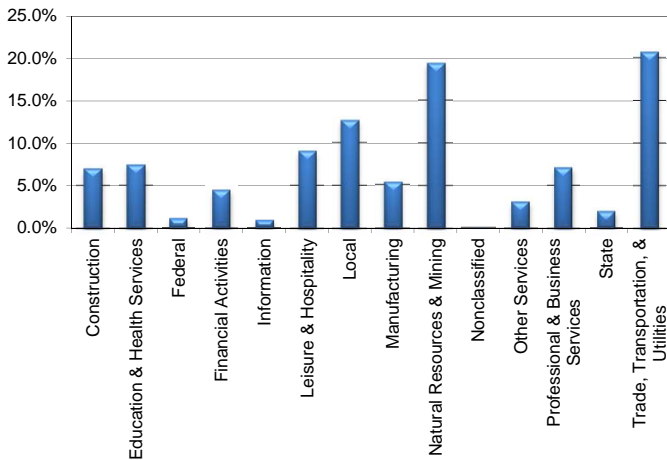
August 2013

Permian Basin WDA					Texas				
	CLF	Employed	Unemployed	Rate		CLF	Employed	Unemployed	Rate
Aug-13	252,224	242,155	10,069	4.0	Aug-13	12,780,824	11,981,929	798,895	6.3
Jul-13	253,906	243,009	10,897	4.3	Jul-13	12,868,256	12,010,823	857,433	6.7
Aug-12	243,291	232,745	10,546	4.3	Aug-12	12,572,856	11,700,357	872,499	6.9

Historical Unemployment Rates



Permian Basin WDA Industry Composition 1st Quarter 2013



Total WDA Claims

Continued Claims for the Week of the 12th				
	Aug-13	Jul-13	Aug-12	OTY
Continued	1,126	1,072	930	196

Texas Unemployment Insurance Claims

Continued Claims for the Week of the 12th				
	Aug-13	Jul-13	Aug-12	OTY
Continued	131,232	140,477	135,191	-3,959

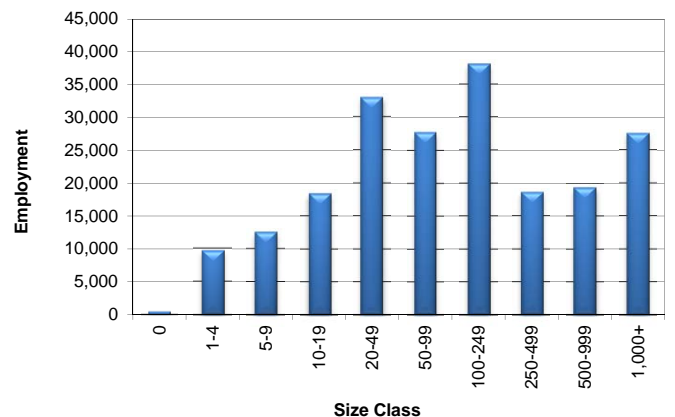
Permian Basin WDA Average Weekly Wage

	Permian Basin	Texas
1st Quarter 2013	\$1,062.96	\$1,015.49
4th Quarter 2012	\$1,125.00	\$1,027.11
1st Quarter 2012	\$1,043.45	\$1,012.32
Quarter Change	-\$62.04	-\$11.62
OTY Change	\$19.51	\$3.17

NAICS Covered Employment Quarterly Data 1st Quarter 2013

SUPER SECTOR	Employment	Change	
		Quarter	Year
Construction	14,409	-1,292	362
Education & Health Services	15,215	-352	-183
Federal	2,188	174	257
Financial Activities	9,073	54	816
Information	1,804	-53	-121
Leisure & Hospitality	18,606	157	1,201
Local	25,967	-167	68
Manufacturing	10,979	-19	564
Natural Resources & Mining	39,788	-341	3,296
Nonclassified	101	30	85
Other Services	6,319	206	330
Professional & Business Services	14,622	-445	324
State	3,911	-70	-58
Trade, Transportation, & Utilities	42,555	-166	3,718
TOTAL	205,537	-2,284	10,659

Size Class Employment Composition 1st Quarter 2013



*Counties in WDA: Andrews, Borden, Crane, Dawson, Ector, Gaines, Glasscock, Howard, Loving, Martin, Midland, Pecos, Reeves, Terrell, Upton, Ward, & Winkler

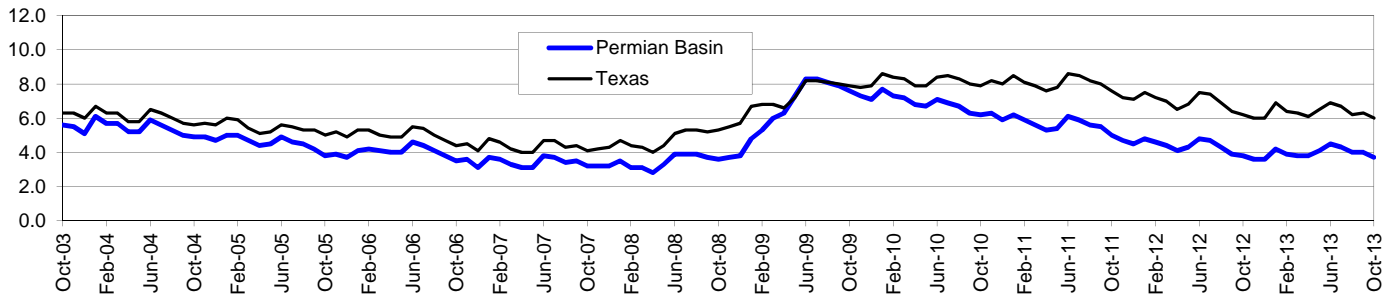
Area	Area Type	Latest Month				Month Ago				Year Ago			
		August				July				August			
		2013				2013				2012			
		Labor Force	Employment	Unemployment	Rate	Labor Force	Employment	Unemployment	Rate	Labor Force	Employment	Unemployment	Rate
Texas	State	12,780,824	11,981,929	798,895	6.3	12,868,256	12,010,823	857,433	6.7	12,572,856	11,700,357	872,499	6.9
Midland	MSA	95,687	92,598	3,089	3.2	96,151	92,800	3,351	3.5	91,717	88,484	3,233	3.5
Odessa	MSA	87,500	84,084	3,416	3.9	87,362	83,670	3,692	4.2	83,724	80,067	3,657	4.4
Permian Basin	WDA	252,224	242,155	10,069	4.0	253,906	243,009	10,897	4.3	243,291	232,745	10,546	4.3
Andrews	County	9,085	8,756	329	3.6	9,148	8,777	371	4.1	8,949	8,608	341	3.8
Borden	County	616	599	17	2.8	638	620	18	2.8	580	564	16	2.8
Crane	County	1,991	1,898	93	4.7	2,012	1,912	100	5.0	1,941	1,840	101	5.2
Dawson	County	5,110	4,741	369	7.2	5,332	4,935	397	7.4	5,213	4,842	371	7.1
Ector	County	87,500	84,084	3,416	3.9	87,362	83,670	3,692	4.2	83,724	80,067	3,657	4.4
Gaines	County	7,854	7,476	378	4.8	8,185	7,766	419	5.1	7,974	7,594	380	4.8
Glasscock	County	687	661	26	3.8	766	735	31	4.0	706	675	31	4.4
Howard	County	14,764	13,908	856	5.8	15,054	14,112	942	6.3	14,370	13,464	906	6.3
Loving	County	47	42	5	10.6	50	45	5	10.0	41	37	4	9.8
Martin	County	2,630	2,522	108	4.1	2,726	2,614	112	4.1	2,531	2,418	113	4.5
Midland	County	95,687	92,598	3,089	3.2	96,151	92,800	3,351	3.5	91,717	88,484	3,233	3.5
Pecos	County	8,708	8,275	433	5.0	8,919	8,486	433	4.9	8,904	8,498	406	4.6
Reeves	County	4,679	4,260	419	9.0	4,687	4,232	455	9.7	4,546	4,100	446	9.8
Terrell	County	431	407	24	5.6	464	441	23	5.0	449	420	29	6.5
Upton	County	2,073	1,998	75	3.6	2,085	2,008	77	3.7	2,057	1,990	67	3.3
Ward	County	6,409	6,152	257	4.0	6,400	6,118	282	4.4	5,830	5,567	263	4.5
Winkler	County	3,953	3,778	175	4.4	3,927	3,738	189	4.8	3,759	3,577	182	4.8
Big Spring	City	10,730	10,052	678	6.3	10,936	10,199	737	6.7	10,418	9,731	687	6.6
Midland	City	78,221	75,689	2,532	3.2	78,559	75,854	2,705	3.4	74,958	72,326	2,632	3.5
Odessa	City	64,043	61,594	2,449	3.8	63,935	61,299	2,636	4.1	61,298	58,656	2,642	4.3

Permian Basin Workforce Development Area*

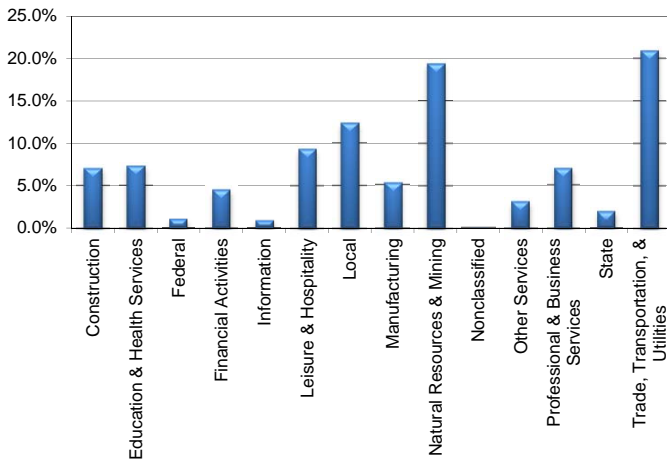
October 2013

Permian Basin WDA					Texas				
	CLF	Employed	Unemployed	Rate		CLF	Employed	Unemployed	Rate
Oct-13	252,706	243,268	9,438	3.7	Oct-13	12,784,059	12,013,884	770,175	6.0
Sep-13	252,950	242,804	10,146	4.0	Sep-13	12,833,728	12,024,405	809,323	6.3
Oct-12	246,219	236,939	9,280	3.8	Oct-12	12,667,703	11,882,228	785,475	6.2

Historical Unemployment Rates



Permian Basin WDA Industry Composition 2nd Quarter 2013



Total WDA Claims

Continued Claims for the Week of the 12th

	Oct-13	Sep-13	Oct-12	OTY
Continued	962	983	811	151

Texas Unemployment Insurance Claims

Continued Claims for the Week of the 12th

	Oct-13	Sep-13	Oct-12	OTY
Continued	118,402	123,215	123,246	-4,844

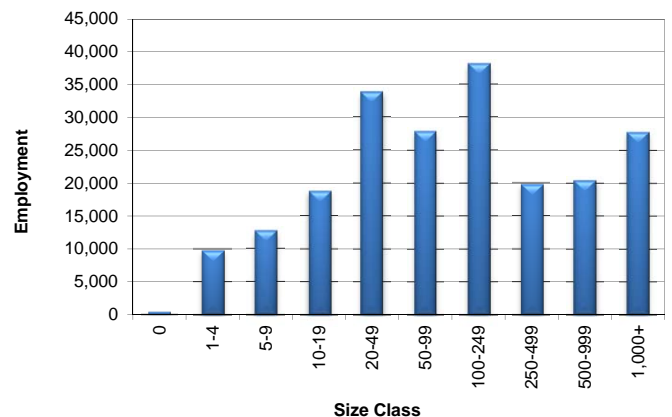
Permian Basin WDA Average Weekly Wage

	Permian Basin	Texas
2nd Quarter 2013	\$1,036.11	\$943.61
1st Quarter 2013	\$1,062.93	\$1,015.23
2nd Quarter 2012	\$981.64	\$922.03
Quarter Change	-\$26.82	-\$71.62
OTY Change	\$54.47	\$21.58

NAICS Covered Employment Quarterly Data 2nd Quarter 2013

SUPER SECTOR	Employment	Change	
		Quarter	Year
Construction	14,779	352	-42
Education & Health Services	15,304	72	-34
Federal	2,132	-56	200
Financial Activities	9,265	177	643
Information	1,803	-7	-102
Leisure & Hospitality	19,584	969	1,049
Local	25,905	-59	85
Manufacturing	11,073	24	259
Natural Resources & Mining	40,686	968	2,148
Nonclassified	96	-7	55
Other Services	6,491	159	235
Professional & Business Services	14,615	-42	8
State	3,979	68	-26
Trade, Transportation, & Utilities	43,915	1,325	3,986
TOTAL	209,627	3,943	8,464

Size Class Employment Composition 2nd Quarter 2013



*Counties in WDA: Andrews, Borden, Crane, Dawson, Ector, Gaines, Glasscock, Howard, Loving, Martin, Midland, Pecos, Reeves, Terrell, Upton, Ward, & Winkler

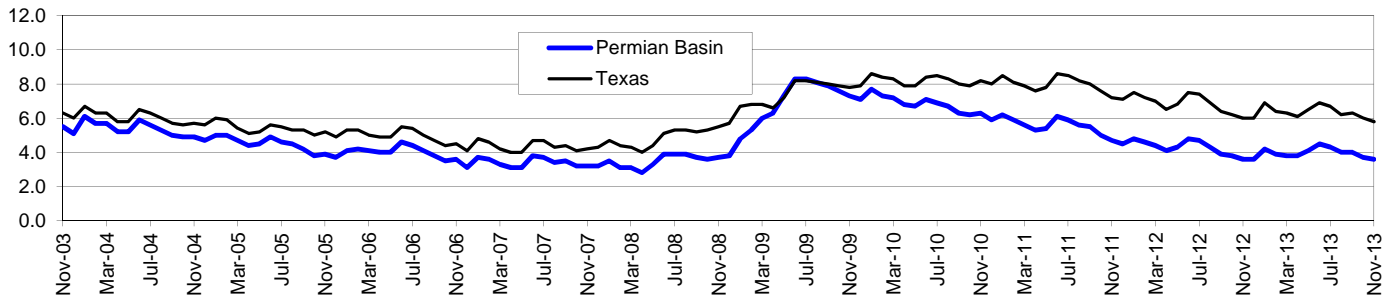
Area	Area Type	Latest Month				Month Ago				Year Ago			
		October				September				October			
		2013				2013				2012			
		Labor Force	Employment	Unemployment	Rate	Labor Force	Employment	Unemployment	Rate	Labor Force	Employment	Unemployment	Rate
Texas	State	12,784,059	12,013,884	770,175	6.0	12,833,728	12,024,405	809,323	6.3	12,667,703	11,882,228	785,475	6.2
Midland	MSA	95,977	93,039	2,938	3.1	95,893	92,719	3,174	3.3	92,439	89,597	2,842	3.1
Odessa	MSA	87,823	84,630	3,193	3.6	88,009	84,626	3,383	3.8	85,287	82,092	3,195	3.7
Permian Basin	WDA	252,706	243,268	9,438	3.7	252,950	242,804	10,146	4.0	246,219	236,939	9,280	3.8
Andrews	County	9,209	8,898	311	3.4	9,103	8,765	338	3.7	9,189	8,895	294	3.2
Borden	County	562	543	19	3.4	549	533	16	2.9	588	571	17	2.9
Crane	County	1,973	1,889	84	4.3	2,023	1,932	91	4.5	1,955	1,865	90	4.6
Dawson	County	5,198	4,856	342	6.6	5,108	4,729	379	7.4	5,318	5,005	313	5.9
Ector	County	87,823	84,630	3,193	3.6	88,009	84,626	3,383	3.8	85,287	82,092	3,195	3.7
Gaines	County	7,964	7,633	331	4.2	7,950	7,576	374	4.7	8,083	7,753	330	4.1
Glasscock	County	724	699	25	3.5	705	677	28	4.0	682	656	26	3.8
Howard	County	14,764	13,948	816	5.5	14,831	13,964	867	5.8	14,538	13,734	804	5.5
Loving	County	48	44	4	8.3	46	41	5	10.9	42	38	4	9.5
Martin	County	2,713	2,607	106	3.9	2,687	2,579	108	4.0	2,521	2,422	99	3.9
Midland	County	95,977	93,039	2,938	3.1	95,893	92,719	3,174	3.3	92,439	89,597	2,842	3.1
Pecos	County	8,477	8,084	393	4.6	8,632	8,192	440	5.1	8,932	8,560	372	4.2
Reeves	County	4,738	4,360	378	8.0	4,729	4,318	411	8.7	4,488	4,082	406	9.0
Terrell	County	419	394	25	6.0	419	395	24	5.7	436	410	26	6.0
Upton	County	2,128	2,060	68	3.2	2,053	1,977	76	3.7	2,052	1,990	62	3.0
Ward	County	6,076	5,832	244	4.0	6,268	6,009	259	4.1	5,879	5,641	238	4.0
Winkler	County	3,913	3,752	161	4.1	3,945	3,772	173	4.4	3,790	3,628	162	4.3
Big Spring	City	10,724	10,081	643	6.0	10,779	10,092	687	6.4	10,546	9,926	620	5.9
Midland	City	78,436	76,050	2,386	3.0	78,389	75,788	2,601	3.3	75,557	73,236	2,321	3.1
Odessa	City	64,300	61,993	2,307	3.6	64,421	61,986	2,435	3.8	62,431	60,125	2,306	3.7

Permian Basin Workforce Development Area*

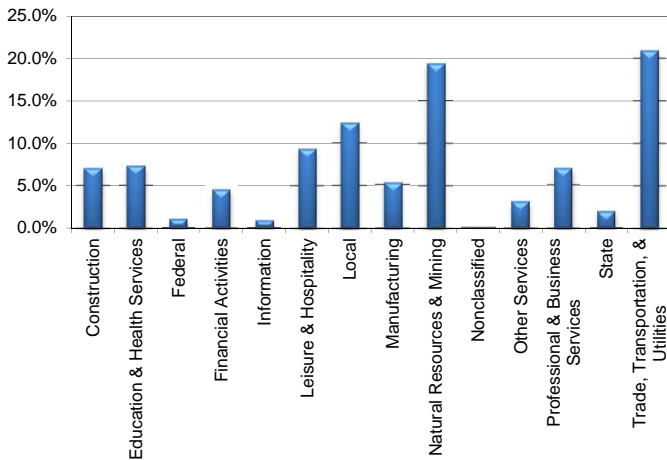
November 2013

Permian Basin WDA					Texas				
	CLF	Employed	Unemployed	Rate		CLF	Employed	Unemployed	Rate
Nov-13	254,276	245,220	9,056	3.6	Nov-13	12,855,624	12,110,517	745,107	5.8
Oct-13	252,529	243,099	9,430	3.7	Oct-13	12,784,117	12,014,117	770,000	6.0
Nov-12	245,908	237,012	8,896	3.6	Nov-12	12,629,384	11,874,410	754,974	6.0

Historical Unemployment Rates



Permian Basin WDA Industry Composition 2nd Quarter 2013



Total WDA Claims

Continued Claims for the Week of the 12th

	Nov-13	Oct-13	Nov-12	OTY
Continued	918	966	797	121

Texas Unemployment Insurance Claims

Continued Claims for the Week of the 12th

	Nov-13	Oct-13	Nov-12	OTY
Continued	120,307	118,988	123,883	-3,576

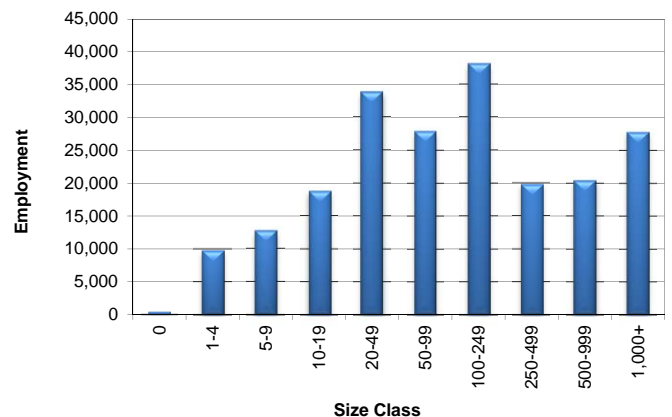
Permian Basin WDA Average Weekly Wage

	Permian Basin	Texas
2nd Quarter 2013	\$1,036.11	\$943.61
1st Quarter 2013	\$1,062.93	\$1,015.23
2nd Quarter 2012	\$981.64	\$922.03
Quarter Change	-\$26.82	-\$71.62
OTY Change	\$54.47	\$21.58

NAICS Covered Employment Quarterly Data 2nd Quarter 2013

SUPER SECTOR	Employment	Change	
		Quarter	Year
Construction	14,779	352	-42
Education & Health Services	15,304	72	-34
Federal	2,132	-56	200
Financial Activities	9,265	177	643
Information	1,803	-7	-102
Leisure & Hospitality	19,584	969	1,049
Local	25,905	-59	85
Manufacturing	11,073	24	259
Natural Resources & Mining	40,686	968	2,148
Nonclassified	96	-7	55
Other Services	6,491	159	235
Professional & Business Services	14,615	-42	8
State	3,979	68	-26
Trade, Transportation, & Utilities	43,915	1,325	3,986
TOTAL	209,627	3,943	8,464

Size Class Employment Composition 2nd Quarter 2013



*Counties in WDA: Andrews, Borden, Crane, Dawson, Ector, Gaines, Glasscock, Howard, Loving, Martin, Midland, Pecos, Reeves, Terrell, Upton, Ward, & Winkler

Area	Area Type	Latest Month				Month Ago				Year Ago			
		November				October				November			
		2013				2013				2012			
		Labor Force	Employment	Unemployment	Rate	Labor Force	Employment	Unemployment	Rate	Labor Force	Employment	Unemployment	Rate
Texas	State	12,855,624	12,110,517	745,107	5.8	12,784,117	12,014,117	770,000	6.0	12,629,384	11,874,410	754,974	6.0
Midland	MSA	96,933	94,134	2,799	2.9	95,863	92,928	2,935	3.1	92,408	89,701	2,707	2.9
Odessa	MSA	89,223	86,133	3,090	3.5	87,774	84,584	3,190	3.6	85,505	82,430	3,075	3.6
Permian Basin	WDA	254,276	245,220	9,056	3.6	252,529	243,099	9,430	3.7	245,908	237,012	8,896	3.6
Andrews	County	9,200	8,894	306	3.3	9,206	8,895	311	3.4	9,210	8,915	295	3.2
Borden	County	572	554	18	3.1	562	543	19	3.4	635	619	16	2.5
Crane	County	1,967	1,885	82	4.2	1,973	1,889	84	4.3	1,948	1,862	86	4.4
Dawson	County	5,058	4,729	329	6.5	5,196	4,855	341	6.6	5,242	4,937	305	5.8
Ector	County	89,223	86,133	3,090	3.5	87,774	84,584	3,190	3.6	85,505	82,430	3,075	3.6
Gaines	County	7,779	7,458	321	4.1	7,962	7,632	330	4.1	7,972	7,655	317	4.0
Glasscock	County	660	636	24	3.6	724	699	25	3.5	662	636	26	3.9
Howard	County	14,735	13,956	779	5.3	14,761	13,944	817	5.5	14,427	13,669	758	5.3
Loving	County	47	43	4	8.5	48	44	4	8.3	44	40	4	9.1
Martin	County	2,645	2,551	94	3.6	2,713	2,607	106	3.9	2,503	2,411	92	3.7
Midland	County	96,933	94,134	2,799	2.9	95,863	92,928	2,935	3.1	92,408	89,701	2,707	2.9
Pecos	County	8,238	7,867	371	4.5	8,477	8,083	394	4.6	8,856	8,500	356	4.0
Reeves	County	4,649	4,293	356	7.7	4,737	4,360	377	8.0	4,388	4,009	379	8.6
Terrell	County	397	371	26	6.5	419	394	25	6.0	424	399	25	5.9
Upton	County	2,090	2,021	69	3.3	2,126	2,059	67	3.2	2,026	1,963	63	3.1
Ward	County	6,197	5,961	236	3.8	6,075	5,831	244	4.0	5,885	5,653	232	3.9
Winkler	County	3,886	3,734	152	3.9	3,913	3,752	161	4.1	3,773	3,613	160	4.2
Big Spring	City	10,691	10,087	604	5.6	10,722	10,078	644	6.0	10,464	9,879	585	5.6
Midland	City	79,215	76,945	2,270	2.9	78,343	75,959	2,384	3.0	75,520	73,321	2,199	2.9
Odessa	City	65,317	63,086	2,231	3.4	64,264	61,959	2,305	3.6	62,604	60,370	2,234	3.6