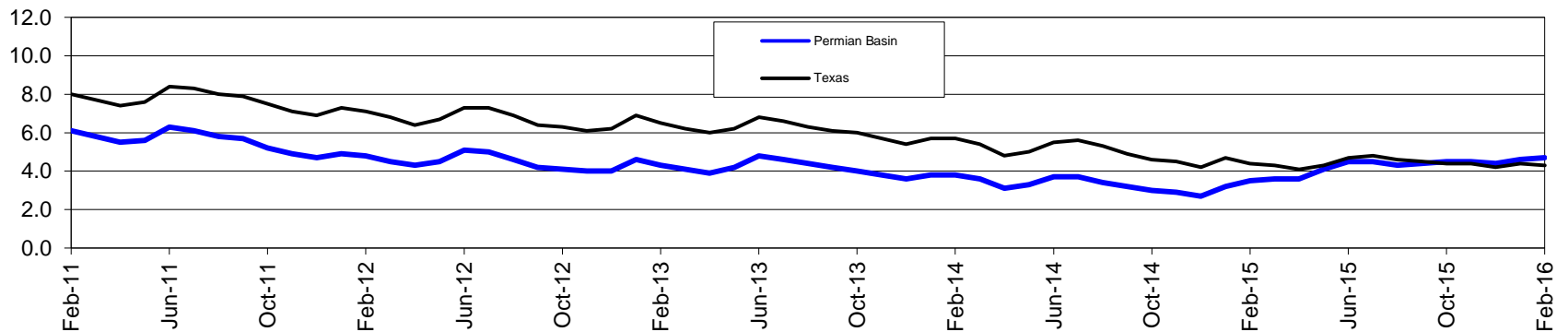


Permian Basin Workforce Development Area*

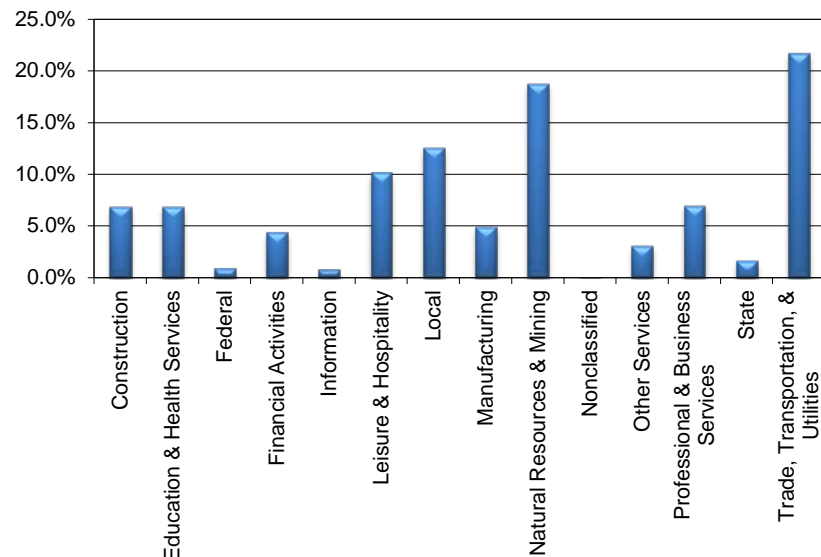
February 2016

Permian Basin WDA					Texas				
	CLF	Employed	Unemployed	Rate		CLF	Employed	Unemployed	Rate
Feb-16	232,454	221,480	10,974	4.7	Feb-16	13,221,720	12,654,923	566,797	4.3
Jan-16	230,842	220,266	10,576	4.6	Jan-16	13,113,461	12,531,940	581,521	4.4
Feb-15	240,183	231,894	8,289	3.5	Feb-15	13,001,418	12,423,206	578,212	4.4

Historical Unemployment Rates



Permian Basin WDA Industry Composition 3rd Quarter 2015



Total WDA Claims

Continued Claims for the Week of the 12th

	Feb-16	Jan-16	Feb-15	OTY
Continued	3,761	3,201	2,055	1,706

Texas Unemployment Insurance Claims

Continued Claims for the Week of the 12th

	Feb-16	Jan-16	Feb-15	OTY
Continued	144,014	143,155	120,172	23,842

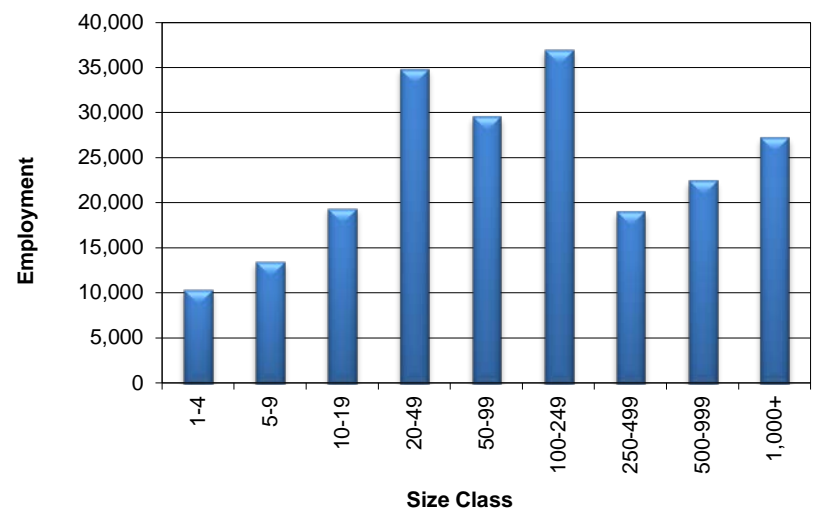
Permian Basin WDA Average Weekly Wage

	Permian Basin	Texas
3rd Quarter 2015	\$1,059.34	\$998.63
2nd Quarter 2015	\$1,081.38	\$988.42
3rd Quarter 2014	\$1,123.52	\$987.85
Quarter Change	-\$22.04	\$10.21
OTY Change	-\$64.18	\$10.78

NAICS Covered Employment Quarterly Data 3rd Quarter 2015

SUPER SECTOR	Employment	Change	
		Quarter	Year
Construction	14,750	-489	-1,105
Education & Health Services	14,820	-155	-88
Federal	1,917	1	-189
Financial Activities	9,436	-310	-779
Information	1,627	-41	-65
Leisure & Hospitality	21,847	-20	405
Local	27,004	-656	1,035
Manufacturing	10,530	-386	-1,310
Natural Resources & Mining	40,323	-1,252	-6,907
Nonclassified	64	15	23
Other Services	6,672	-28	-316
Professional & Business Services	15,095	-123	-930
State	3,670	159	74
Trade, Transportation, & Utilities	46,636	-835	-669
TOTAL	214,391	-4,120	-10,821

Size Class Employment Composition 3rd Quarter 2015



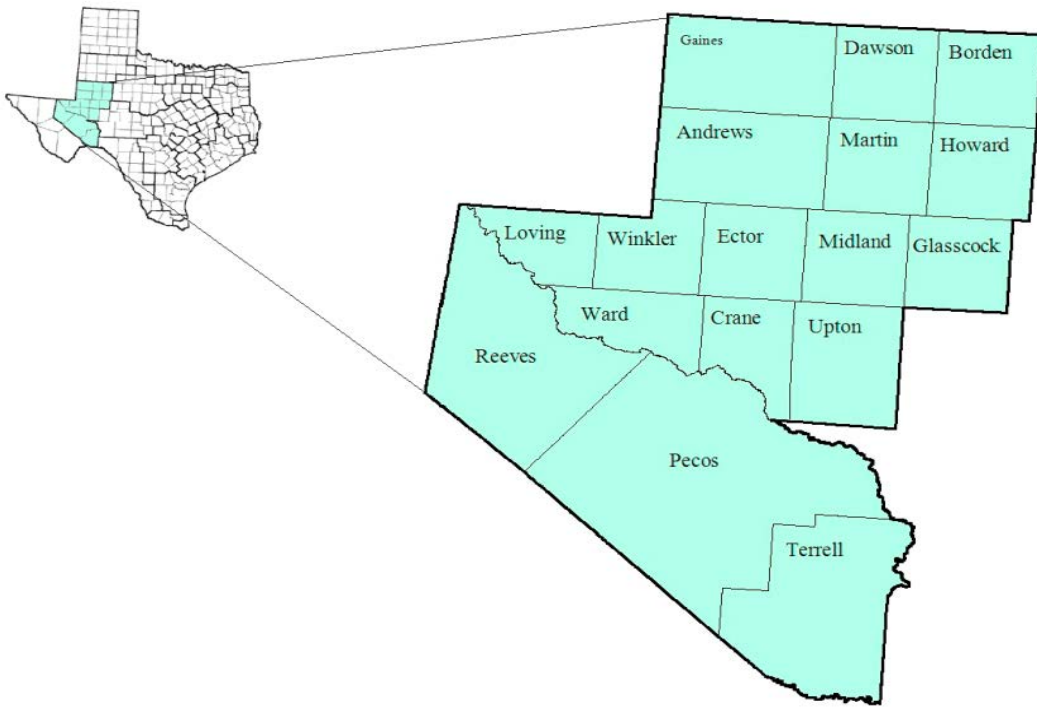
*Counties in WDA: Andrews, Borden, Crane, Dawson, Ector, Gaines, Glasscock, Howard, Loving, Martin, Midland, Pecos, Reeves, Terrell, Upton, Ward, & Winkler

Available at <http://www.tracer2.com/>

PERMIAN BASIN													
February 2016				January 2016				February 2015					
Area	Area Type	Labor Force	Employment	Unemployment	Rate	Labor Force	Employment	Unemployment	Rate	Labor Force	Employment	Unemployment	Rate
Texas	State	13,221,720	12,654,923	566,797	4.3	13,113,461	12,531,940	581,521	4.4	13,001,418	12,423,206	578,212	4.4
Midland	MSA	89,933	86,373	3,560	4.0	89,797	86,338	3,459	3.9	93,207	90,453	2,754	3.0
Odessa	MSA	78,922	74,527	4,395	5.6	78,408	74,192	4,216	5.4	82,275	79,216	3,059	3.7
Permian Basin	WDA	232,454	221,480	10,974	4.7	230,842	220,266	10,576	4.6	240,183	231,894	8,289	3.5
Andrews	County	9,310	8,922	388	4.2	9,161	8,793	368	4.0	9,545	9,264	281	2.9
Borden	County	418	401	17	4.1	403	388	15	3.7	409	399	10	2.4
Crane	County	1,818	1,673	145	8.0	1,775	1,649	126	7.1	1,855	1,770	85	4.6
Dawson	County	4,722	4,518	204	4.3	4,628	4,427	201	4.3	4,824	4,607	217	4.5
Ector	County	78,922	74,527	4,395	5.6	78,408	74,192	4,216	5.4	82,275	79,216	3,059	3.7
Gaines	County	9,456	9,120	336	3.6	9,162	8,839	323	3.5	9,310	9,024	286	3.1
Glasscock	County	831	802	29	3.5	775	744	31	4.0	847	827	20	2.4
Howard	County	13,236	12,572	664	5.0	13,193	12,540	653	4.9	13,493	12,914	579	4.3
Loving	County	84	81	3	3.6	83	79	4	4.8	88	84	4	4.5
Martin	County	2,537	2,440	97	3.8	2,468	2,377	91	3.7	2,646	2,567	79	3.0
Midland	County	87,396	83,933	3,463	4.0	87,329	83,961	3,368	3.9	90,561	87,886	2,675	3.0
Pecos	County	6,863	6,538	325	4.7	6,768	6,443	325	4.8	7,062	6,745	317	4.5
Reeves	County	5,729	5,427	302	5.3	5,651	5,364	287	5.1	5,697	5,474	223	3.9
Terrell	County	420	401	19	4.5	404	383	21	5.2	462	445	17	3.7
Upton	County	1,747	1,666	81	4.6	1,711	1,638	73	4.3	1,858	1,802	56	3.0
Ward	County	5,968	5,669	299	5.0	5,896	5,615	281	4.8	6,137	5,910	227	3.7
Winkler	County	2,997	2,790	207	6.9	3,027	2,834	193	6.4	3,114	2,960	154	4.9
Big Spring	City	9,643	9,129	514	5.3	9,612	9,106	506	5.3	9,828	9,377	451	4.6
Midland	City	71,511	68,869	2,642	3.7	71,484	68,892	2,592	3.6	74,269	72,113	2,156	2.9
Odessa	City	60,207	57,260	2,947	4.9	59,819	57,007	2,812	4.7	63,000	60,846	2,154	3.4

Permian Basin Workforce Development Area

April 2016



WDA Labor Force Statistics

	Apr-16	Mar-16	Apr-15	OTY
CLF	232,221	233,128	236,894	-4,673
Employed	220,117	221,001	228,284	-8,167
Unemployed	12,104	12,127	8,610	3,494
Rate	5.2%	5.2%	3.6%	1.6%

Texas Labor Force Statistics

	Apr-16	Mar-16	Apr-15	OTY
CLF	13,257,468	13,273,267	13,054,103	203,365
Employed	12,696,755	12,682,276	12,524,751	172,004
Unemployed	560,713	590,991	529,352	31,361
Rate	4.2%	4.5%	4.1%	0.1%

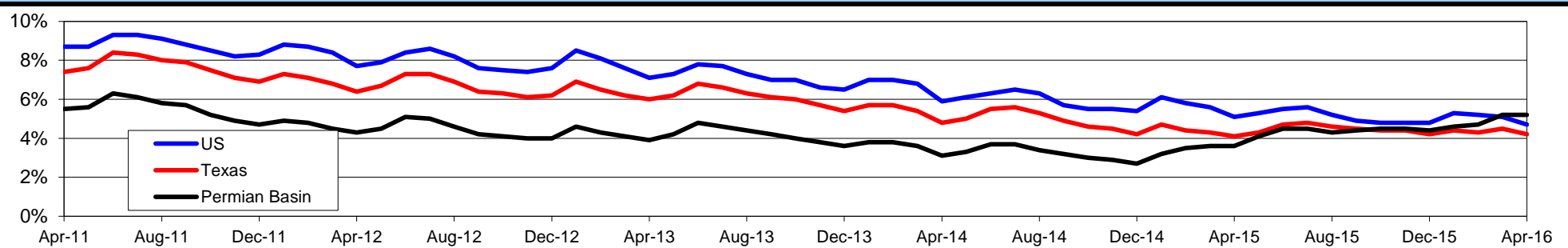
US Labor Force Statistics

	Apr-16	Mar-16	Apr-15	OTY
CLF	158,488,000	158,854,000	156,554,000	1,934,000
Employed	151,075,000	150,738,000	148,587,000	2,488,000
Unemployed	7,413,000	8,116,000	7,966,000	-553,000
Rate	4.7%	5.1%	5.1%	-0.4%

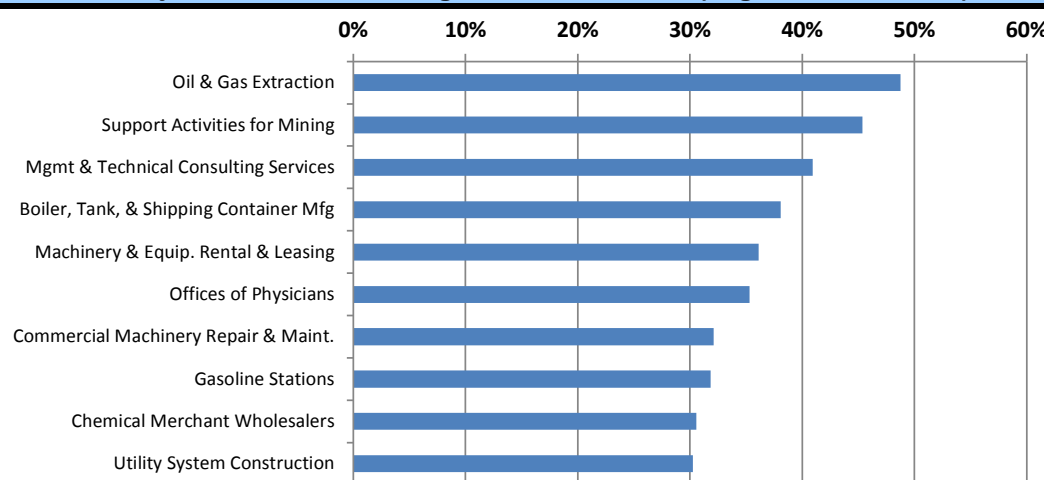
Continued Claims for the Week of the 12th

	Apr-16	Mar-16	Apr-15	OTY
WDA	4,588	4,343	3,168	1,420
Texas	147,304	148,766	136,451	10,853

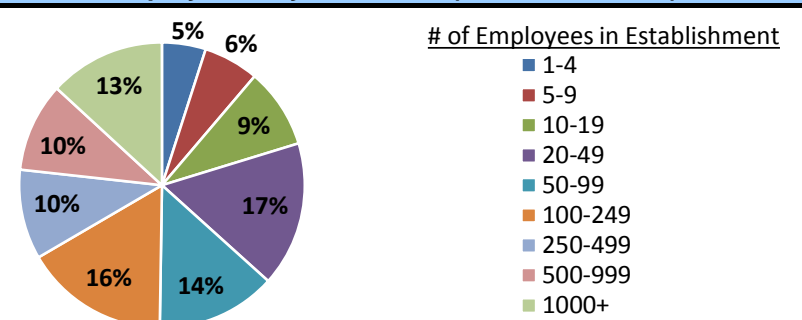
Historical Unemployment Rates



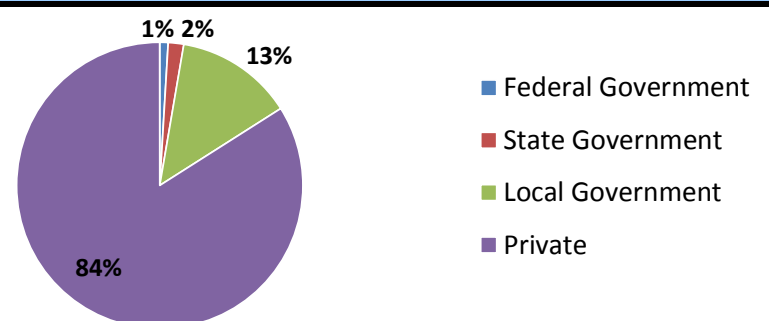
Projected Fastest Growing Industries in WDA (% growth 2012-2022)



Employment by Size Class (4th Quarter 2015)



Employment by Ownership (4th Quarter 2015)



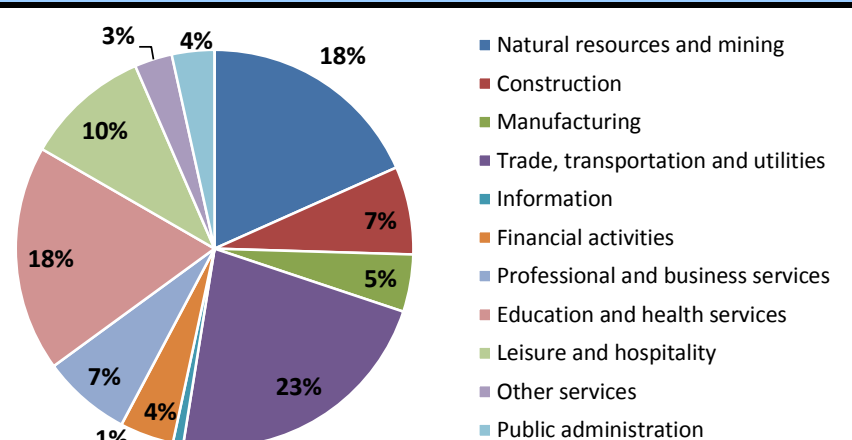
Average Weekly Wage (4th Quarter 2015)

	Q4 2015	Q3 2015	Q4 2014	Change	
				Quarter	Year
WDA	\$1,130	\$1,060	\$1,241	\$70	-\$111
Texas	\$1,099	\$999	\$1,070	\$100	\$29
US	N/A	\$968	\$949	N/A	N/A

Employment by Industry (4th Quarter 2015, Percent Change)

Industry	Employment	% of total	% Change	
			Quarter	Year
Natural resources and mining	38,982	18.3%	-3.2%	-19.5%
Construction	15,191	7.1%	-1.8%	-11.4%
Manufacturing	9,933	4.7%	-5.7%	-18.1%
Trade, transportation and utilities	47,628	22.4%	0.1%	-4.6%
Information	1,792	0.8%	1.9%	-1.7%
Financial activities	9,299	4.4%	-2.0%	-11.4%
Professional and business services	15,352	7.2%	-0.5%	-7.8%
Education and health services	39,081	18.4%	4.8%	1.6%
Leisure and hospitality	21,594	10.2%	-3.3%	1.8%
Other services	6,506	3.1%	-2.5%	-6.4%
Public administration	7,345	3.5%	-0.1%	-2.2%
Total	212,703	100.0%	-0.7%	-7.8%

Employment by Industry (4th Quarter 2015)

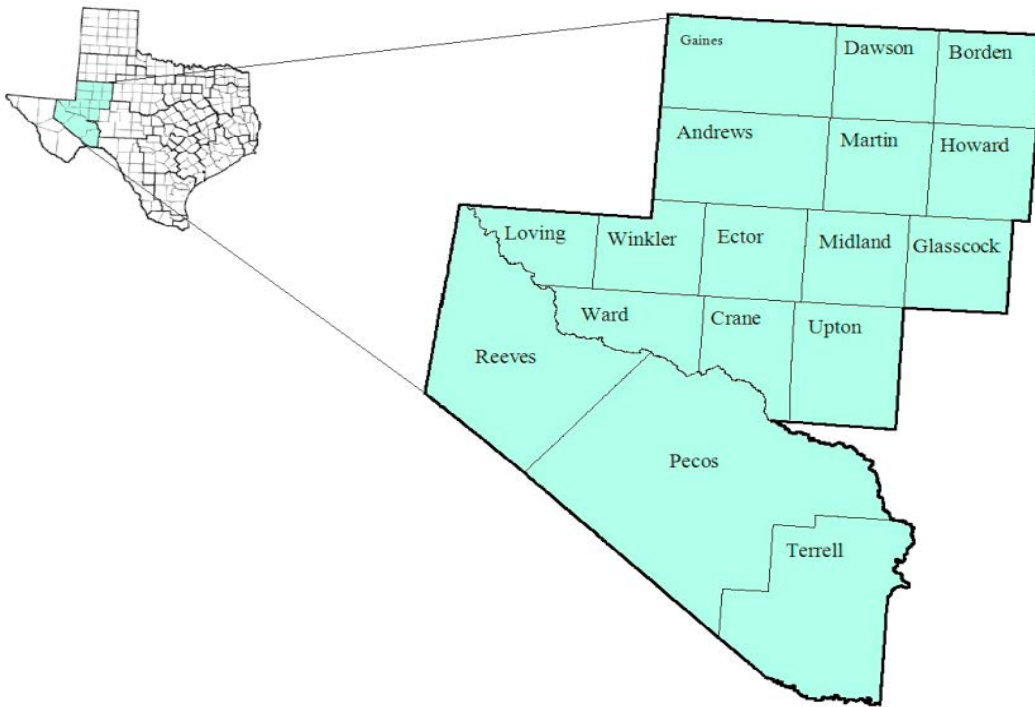


PERMIAN BASIN

April 2016						March 2016				April 2015			
Area	Area Type	Labor Force	Employment	Unemployment	Rate	Labor Force	Employment	Unemployment	Rate	Labor Force	Employment	Unemployment	Rate
Texas	State	13,257,468	12,696,755	560,713	4.2	13,273,267	12,682,276	590,991	4.5	13,054,103	12,524,751	529,352	4.1
Midland	MSA	90,187	86,335	3,852	4.3	90,134	86,242	3,892	4.3	92,138	89,292	2,846	3.1
Odessa	MSA	78,660	73,745	4,915	6.2	79,319	74,474	4,845	6.1	80,703	77,410	3,293	4.1
Permian Basin	WDA	232,221	220,117	12,104	5.2	233,128	221,001	12,127	5.2	236,894	228,284	8,610	3.6
Andrews	County	9,235	8,802	433	4.7	9,234	8,790	444	4.8	9,422	9,143	279	3.0
Borden	County	418	406	12	2.9	425	410	15	3.5	418	409	9	2.2
Crane	County	1,797	1,628	169	9.4	1,818	1,641	177	9.7	1,871	1,783	88	4.7
Dawson	County	4,731	4,490	241	5.1	4,772	4,537	235	4.9	4,800	4,594	206	4.3
Ector	County	78,660	73,745	4,915	6.2	79,319	74,474	4,845	6.1	80,703	77,410	3,293	4.1
Gaines	County	9,451	9,123	328	3.5	9,467	9,124	343	3.6	9,270	8,998	272	2.9
Glasscock	County	858	825	33	3.8	851	822	29	3.4	839	821	18	2.1
Howard	County	13,202	12,486	716	5.4	13,314	12,573	741	5.6	13,462	12,893	569	4.2
Loving	County	88	84	4	4.5	86	82	4	4.7	79	76	3	3.8
Martin	County	2,559	2,462	97	3.8	2,561	2,459	102	4.0	2,623	2,544	79	3.0
Midland	County	87,628	83,873	3,755	4.3	87,573	83,783	3,790	4.3	89,515	86,748	2,767	3.1
Pecos	County	6,797	6,424	373	5.5	6,897	6,511	386	5.6	6,928	6,608	320	4.6
Reeves	County	5,716	5,352	364	6.4	5,650	5,301	349	6.2	5,576	5,342	234	4.2
Terrell	County	433	418	15	3.5	423	405	18	4.3	465	445	20	4.3
Upton	County	1,684	1,596	88	5.2	1,738	1,645	93	5.4	1,764	1,704	60	3.4
Ward	County	5,945	5,617	328	5.5	5,972	5,646	326	5.5	6,048	5,818	230	3.8
Winkler	County	3,019	2,786	233	7.7	3,028	2,798	230	7.6	3,111	2,948	163	5.2
Big Spring	City	9,597	9,067	530	5.5	9,698	9,130	568	5.9	9,810	9,362	448	4.6
Midland	City	71,651	68,820	2,831	4.0	71,645	68,746	2,899	4.0	73,386	71,179	2,207	3.0
Odessa	City	59,922	56,669	3,253	5.4	60,434	57,218	3,216	5.3	61,741	59,469	2,272	3.7

Permian Basin Workforce Development Area

August 2016



WDA Labor Force Statistics

	Aug-16	Jul-16	Aug-15	OTY
CLF	232,171	232,733	230,785	1,386
Employed	219,114	219,430	220,754	-1,640
Unemployed	13,057	13,303	10,031	3,026
Rate	5.6%	5.7%	4.3%	1.3%

Texas Labor Force Statistics

	Aug-16	Jul-16	Aug-15	OTY
CLF	13,378,918	13,386,057	13,047,642	331,276
Employed	12,709,695	12,706,620	12,447,603	262,092
Unemployed	669,223	679,437	600,039	69,184
Rate	5.0%	5.1%	4.6%	0.4%

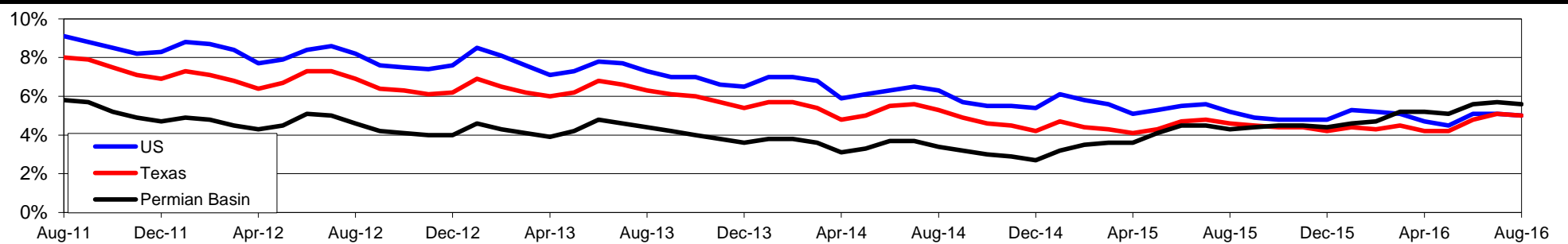
US Labor Force Statistics

	Aug-16	Jul-16	Aug-15	OTY
CLF	159,800,000	160,705,000	157,390,000	2,410,000
Employed	151,804,000	152,437,000	149,228,000	2,576,000
Unemployed	7,996,000	8,267,000	8,162,000	-166,000
Rate	5.0%	5.1%	5.2%	-0.2%

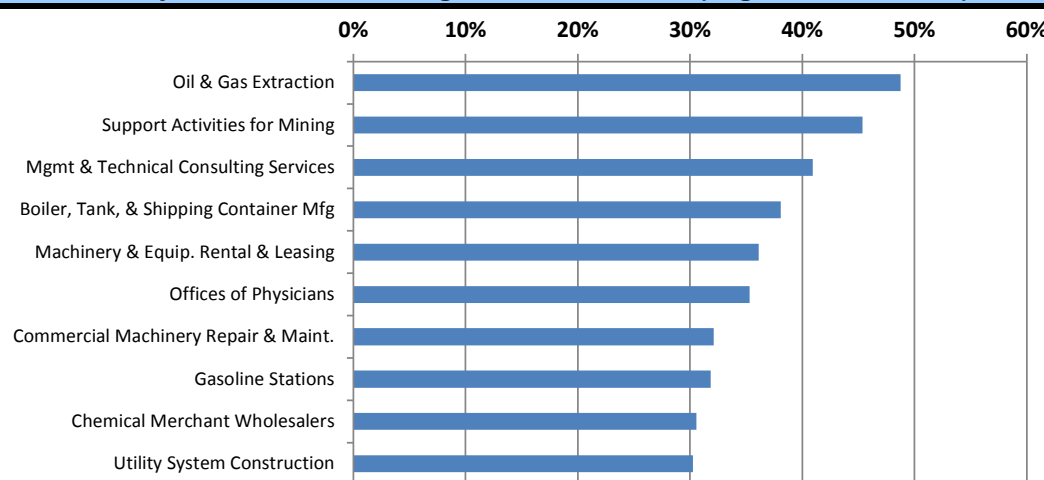
Continued Claims for the Week of the 12th

	Aug-16	Jul-16	Aug-15	OTY
WDA	3,344	3,837	2,944	400
Texas	147,686	157,732	144,204	3,482

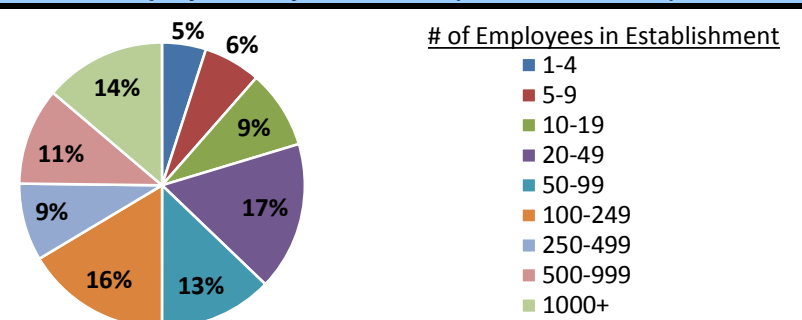
Historical Unemployment Rates



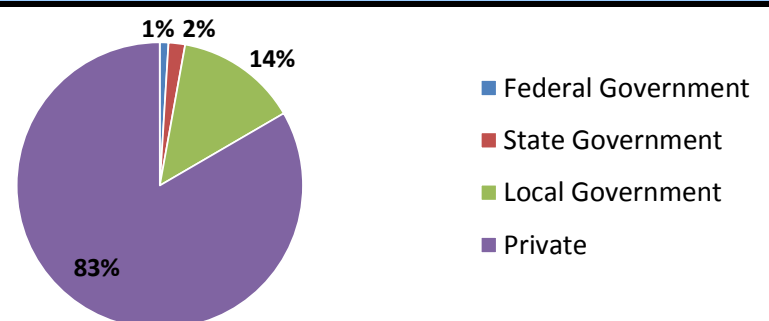
Projected Fastest Growing Industries in WDA (% growth 2012-2022)



Employment by Size Class (1st Quarter 2016)



Employment by Ownership (1st Quarter 2016)



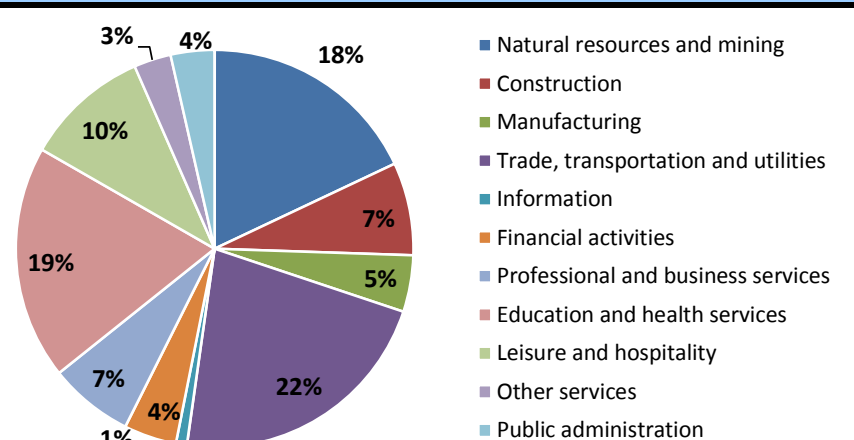
Average Weekly Wage (1st Quarter 2016)

	Q1 2016	Q4 2015	Q1 2015	Change Quarter	Change Year
WDA	\$1,076	\$1,129	\$1,149	-\$53	-\$73
Texas	\$1,066	\$1,099	\$1,089	-\$33	-\$23
US	\$1,043	\$1,083	\$1,048	-\$40	-\$5

Employment by Industry (1st Quarter 2016, Percent Change)

Industry	Employment	% of total	% Change	
			Quarter	Year
Natural resources and mining	36,823	18.0%	-5.7%	-18.3%
Construction	15,439	7.5%	1.9%	-8.5%
Manufacturing	9,409	4.6%	-5.3%	-19.4%
Trade, transportation and utilities	45,284	22.1%	-4.8%	-8.0%
Information	1,826	0.9%	2.0%	3.9%
Financial activities	8,756	4.3%	-5.8%	-13.5%
Professional and business services	14,061	6.9%	-8.3%	-12.3%
Education and health services	38,917	19.0%	-0.4%	1.7%
Leisure and hospitality	20,768	10.1%	-3.8%	-1.8%
Other services	6,166	3.0%	-5.4%	-9.3%
Public administration	7,284	3.6%	-0.8%	0.8%
Total	204,733	100.0%	-3.7%	-8.7%

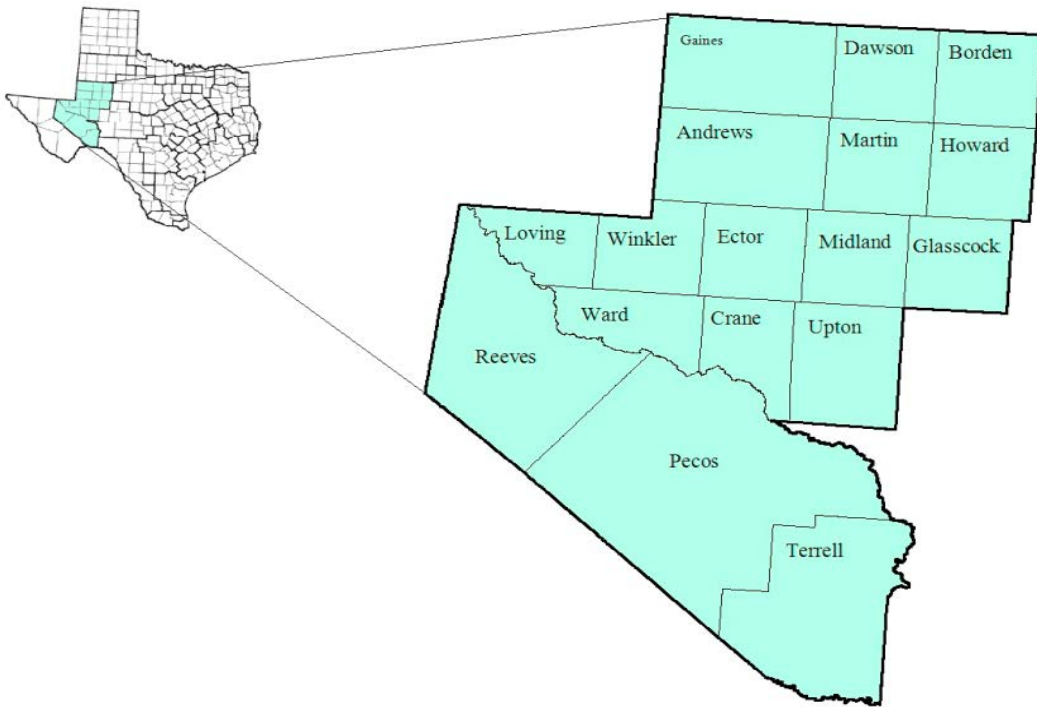
Employment by Industry (1st Quarter 2016)



PERMIAN BASIN													
August-16						July-16				Aug-15			
Area	Area Type	Labor Force	Employment	Unemployment	Rate	Labor Force	Employment	Unemployment	Rate	Labor Force	Employment	Unemployment	Rate
Texas	State	13,378,918	12,709,695	669,223	5.0	13,386,057	12,706,620	679,437	5.1	13,047,642	12,447,603	600,039	4.6
Midland	MSA	90,250	86,095	4,155	4.6	90,719	86,453	4,266	4.7	89,470	86,196	3,274	3.7
Odessa	MSA	79,218	73,842	5,376	6.8	79,488	74,047	5,441	6.8	78,471	74,582	3,889	5.0
Permian Basin	WDA	232,171	219,114	13,057	5.6	232,733	219,430	13,303	5.7	230,785	220,754	10,031	4.3
Andrews	County	9,059	8,615	444	4.9	9,029	8,570	459	5.1	9,146	8,816	330	3.6
Borden	County	406	392	14	3.4	399	384	15	3.8	412	399	13	3.2
Crane	County	1,769	1,607	162	9.2	1,765	1,602	163	9.2	1,804	1,695	109	6.0
Dawson	County	4,597	4,322	275	6.0	4,537	4,264	273	6.0	4,683	4,462	221	4.7
Ector	County	79,218	73,842	5,376	6.8	79,488	74,047	5,441	6.8	78,471	74,582	3,889	5.0
Gaines	County	9,467	9,118	349	3.7	9,397	9,045	352	3.7	9,286	8,975	311	3.3
Glasscock	County	816	781	35	4.3	803	765	38	4.7	797	773	24	3.0
Howard	County	13,136	12,338	798	6.1	13,146	12,347	799	6.1	13,057	12,429	628	4.8
Loving	County	91	87	4	4.4	91	87	4	4.4	70	66	4	5.7
Martin	County	2,535	2,414	121	4.8	2,528	2,403	125	4.9	2,521	2,424	97	3.8
Midland	County	87,715	83,681	4,034	4.6	88,191	84,050	4,141	4.7	86,949	83,772	3,177	3.7
Pecos	County	6,770	6,369	401	5.9	6,738	6,338	400	5.9	6,891	6,516	375	5.4
Reeves	County	5,677	5,329	348	6.1	5,693	5,330	363	6.4	5,543	5,251	292	5.3
Terrell	County	437	419	18	4.1	429	411	18	4.2	437	409	28	6.4
Upton	County	1,685	1,599	86	5.1	1,677	1,587	90	5.4	1,759	1,689	70	4.0
Ward	County	5,783	5,449	334	5.8	5,805	5,462	343	5.9	5,881	5,610	271	4.6
Winkler	County	3,010	2,752	258	8.6	3,017	2,738	279	9.2	3,078	2,886	192	6.2
Big Spring	City	9,571	8,959	612	6.4	9,570	8,966	604	6.3	9,512	9,025	487	5.1
Midland	City	71,794	68,663	3,131	4.4	72,155	68,965	3,190	4.4	71,238	68,737	2,501	3.5
Odessa	City	60,420	56,740	3,680	6.1	60,592	56,898	3,694	6.1	59,922	57,299	2,623	4.4

Permian Basin Workforce Development Area

September 2016



WDA Labor Force Statistics

	Sep-16	Aug-16	Sep-15	OTY
CLF	231,795	231,985	230,128	1,667
Employed	219,023	218,950	219,991	-968
Unemployed	12,772	13,035	10,137	2,635
Rate	5.5%	5.6%	4.4%	1.1%

Texas Labor Force Statistics

	Sep-16	Aug-16	Sep-15	OTY
CLF	13,416,799	13,378,431	13,067,230	349,569
Employed	12,754,685	12,709,461	12,480,453	274,232
Unemployed	662,114	668,970	586,777	75,337
Rate	4.9%	5.0%	4.5%	0.4%

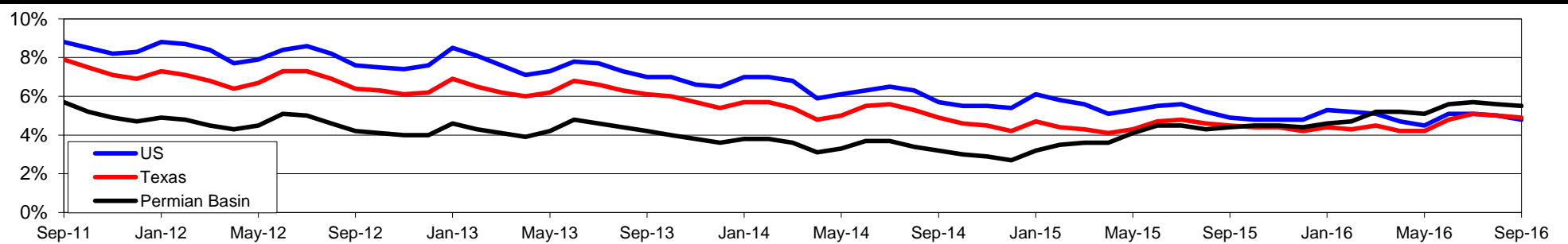
US Labor Force Statistics

	Sep-16	Aug-16	Sep-15	OTY
CLF	159,636,000	159,800,000	156,607,000	3,029,000
Employed	151,977,000	151,804,000	148,980,000	2,997,000
Unemployed	7,658,000	7,996,000	7,628,000	30,000
Rate	4.8%	5.0%	4.9%	-0.1%

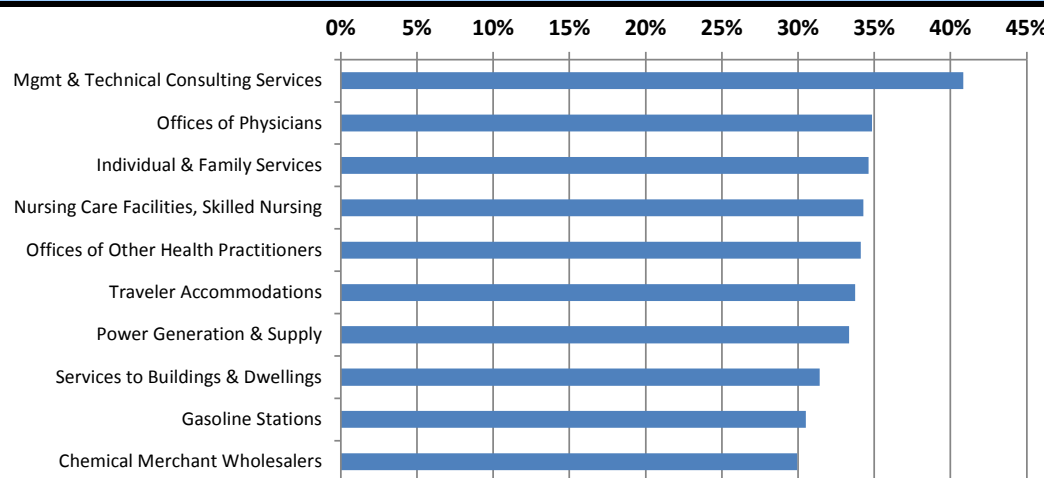
Continued Claims for the Week of the 12th

	Sep-16	Aug-16	Sep-15	OTY
WDA	2,754	3,356	2,903	-149
Texas	132,202	148,897	134,736	-2,534

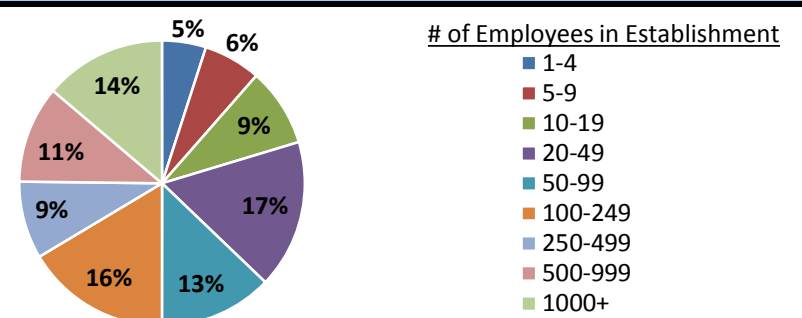
Historical Unemployment Rates



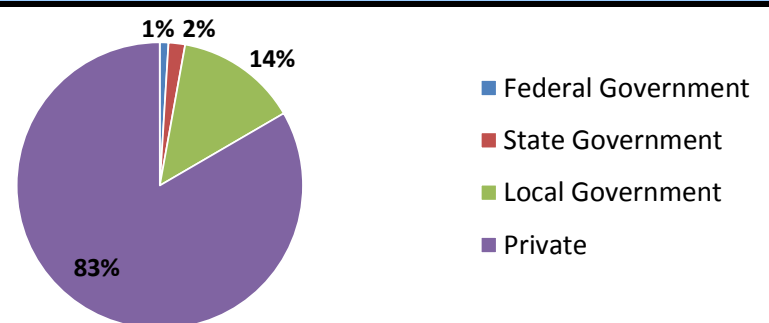
Projected Fastest Growing Industries in WDA (% growth 2014-2024)



Employment by Size Class (1st Quarter 2016)



Employment by Ownership (1st Quarter 2016)



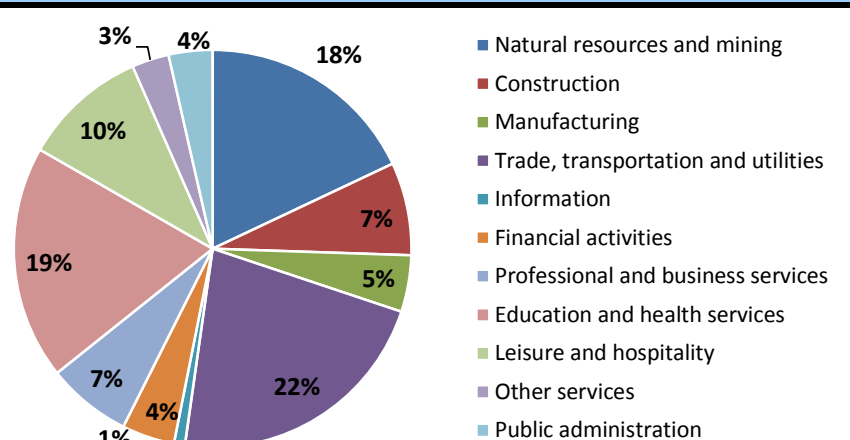
Average Weekly Wage (1st Quarter 2016)

	Q1 2016	Q4 2015	Q1 2015	Change Quarter	Change Year
WDA	\$1,076	\$1,129	\$1,149	-\$53	-\$73
Texas	\$1,066	\$1,099	\$1,089	-\$33	-\$23
US	\$1,043	\$1,083	\$1,048	-\$40	-\$5

Employment by Industry (1st Quarter 2016, Percent Change)

Industry	Employment	% of total	% Change Quarter	% Change Year
Natural resources and mining	36,823	18.0%	-5.7%	-18.3%
Construction	15,439	7.5%	1.9%	-8.5%
Manufacturing	9,409	4.6%	-5.3%	-19.4%
Trade, transportation and utilities	45,284	22.1%	-4.8%	-8.0%
Information	1,826	0.9%	2.0%	3.9%
Financial activities	8,756	4.3%	-5.8%	-13.5%
Professional and business services	14,061	6.9%	-8.3%	-12.3%
Education and health services	38,917	19.0%	-0.4%	1.7%
Leisure and hospitality	20,768	10.1%	-3.8%	-1.8%
Other services	6,166	3.0%	-5.4%	-9.3%
Public administration	7,284	3.6%	-0.8%	0.8%
Total	204,733	100.0%	-3.7%	-8.7%

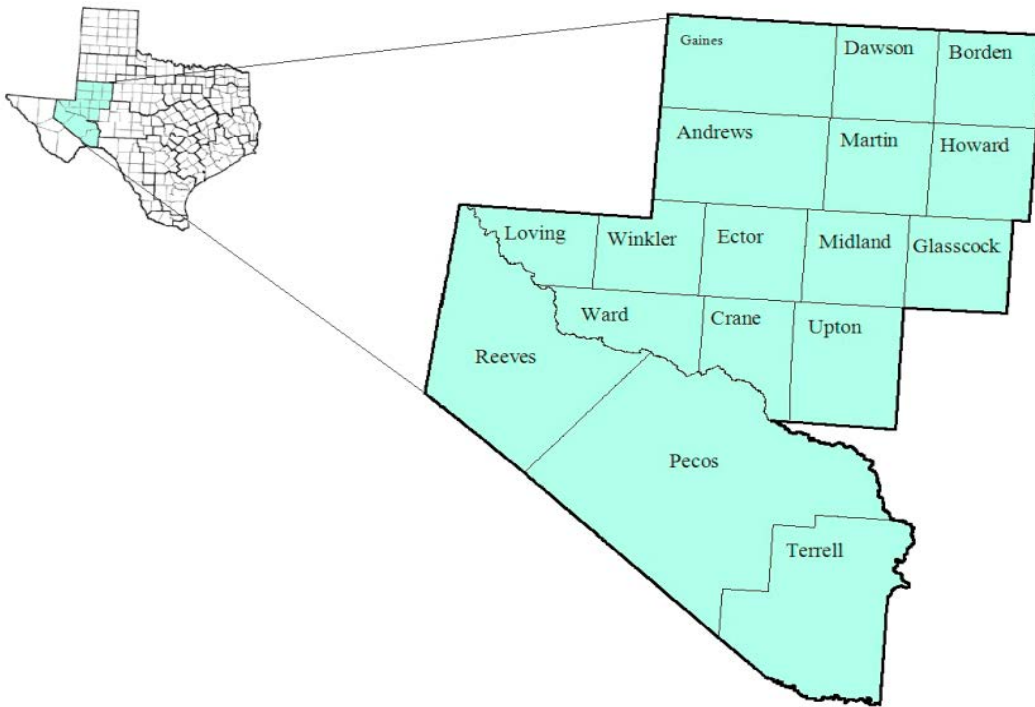
Employment by Industry (1st Quarter 2016)



PERMIAN BASIN													
September-16						August-16				Sep-15			
Area	Area Type	Labor Force	Employment	Unemployment	Rate	Labor Force	Employment	Unemployment	Rate	Labor Force	Employment	Unemployment	Rate
Texas	State	13,416,799	12,754,685	662,114	4.9	13,378,431	12,709,461	668,970	5.0	13,067,230	12,480,453	586,777	4.5
Midland	MSA	90,165	86,095	4,070	4.5	90,098	85,949	4,149	4.6	89,072	85,787	3,285	3.7
Odessa	MSA	79,129	73,929	5,200	6.6	79,181	73,813	5,368	6.8	78,315	74,329	3,986	5.1
Permian Basin	WDA	231,795	219,023	12,772	5.5	231,985	218,950	13,035	5.6	230,128	219,991	10,137	4.4
Andrews	County	9,032	8,606	426	4.7	9,060	8,617	443	4.9	9,118	8,781	337	3.7
Borden	County	401	388	13	3.2	406	392	14	3.4	411	398	13	3.2
Crane	County	1,745	1,596	149	8.5	1,768	1,607	161	9.1	1,811	1,696	115	6.4
Dawson	County	4,581	4,316	265	5.8	4,597	4,323	274	6.0	4,698	4,475	223	4.7
Ector	County	79,129	73,929	5,200	6.6	79,181	73,813	5,368	6.8	78,315	74,329	3,986	5.1
Gaines	County	9,412	9,065	347	3.7	9,470	9,120	350	3.7	9,338	9,027	311	3.3
Glasscock	County	796	764	32	4.0	816	781	35	4.3	809	786	23	2.8
Howard	County	13,179	12,395	784	5.9	13,137	12,341	796	6.1	13,111	12,486	625	4.8
Loving	County	92	88	4	4.3	91	87	4	4.4	74	70	4	5.4
Martin	County	2,502	2,394	108	4.3	2,531	2,410	121	4.8	2,527	2,429	98	3.9
Midland	County	87,663	83,701	3,962	4.5	87,567	83,539	4,028	4.6	86,545	83,358	3,187	3.7
Pecos	County	6,751	6,307	444	6.6	6,771	6,370	401	5.9	6,734	6,373	361	5.4
Reeves	County	5,692	5,355	337	5.9	5,676	5,329	347	6.1	5,636	5,335	301	5.3
Terrell	County	426	406	20	4.7	437	419	18	4.1	432	406	26	6.0
Upton	County	1,646	1,555	91	5.5	1,684	1,599	85	5.0	1,721	1,648	73	4.2
Ward	County	5,755	5,425	330	5.7	5,783	5,450	333	5.8	5,796	5,523	273	4.7
Winkler	County	2,993	2,733	260	8.7	3,010	2,753	257	8.5	3,052	2,871	181	5.9
Big Spring	City	9,608	9,000	608	6.3	9,571	8,961	610	6.4	9,546	9,067	479	5.0
Midland	City	71,757	68,679	3,078	4.3	71,670	68,546	3,124	4.4	70,921	68,398	2,523	3.6
Odessa	City	60,329	56,805	3,524	5.8	60,389	56,716	3,673	6.1	59,789	57,103	2,686	4.5

Permian Basin Workforce Development Area

October 2016



WDA Labor Force Statistics

	Oct-16	Sep-16	Oct-15	OTY
CLF	229,259	231,446	229,960	-701
Employed	218,224	218,685	219,568	-1,344
Unemployed	11,035	12,761	10,392	643
Rate	4.8%	5.5%	4.5%	0.3%

Texas Labor Force Statistics

	Oct-16	Sep-16	Oct-15	OTY
CLF	13,334,556	13,416,525	13,114,424	220,132
Employed	12,749,778	12,754,630	12,531,868	217,910
Unemployed	584,778	661,895	582,556	2,222
Rate	4.4%	4.9%	4.4%	0.0%

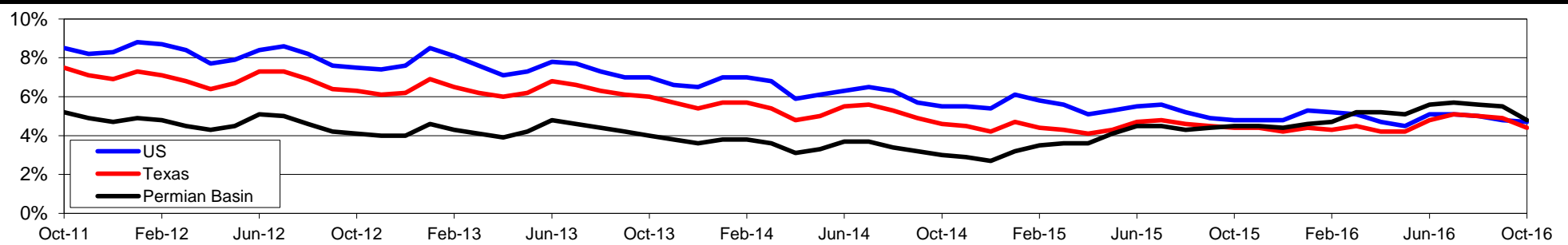
US Labor Force Statistics

	Oct-16	Sep-16	Oct-15	OTY
CLF	159,783,000	159,636,000	157,313,000	2,470,000
Employed	152,335,000	151,977,000	149,716,000	2,619,000
Unemployed	7,447,000	7,658,000	7,597,000	-150,000
Rate	4.7%	4.8%	4.8%	-0.1%

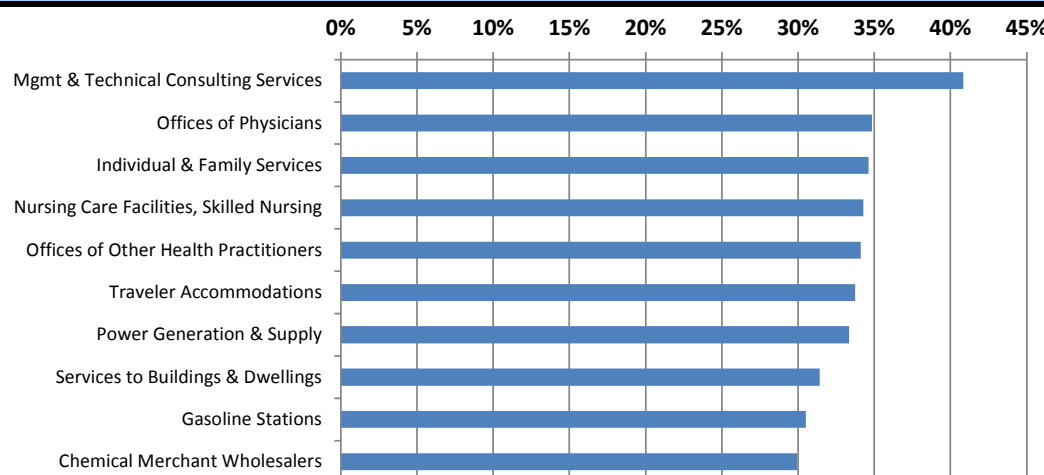
Continued Claims for the Week of the 12th

	Oct-16	Sep-16	Oct-15	OTY
WDA	2,399	2,770	2,948	-549
Texas	123,806	133,309	129,360	-5,554

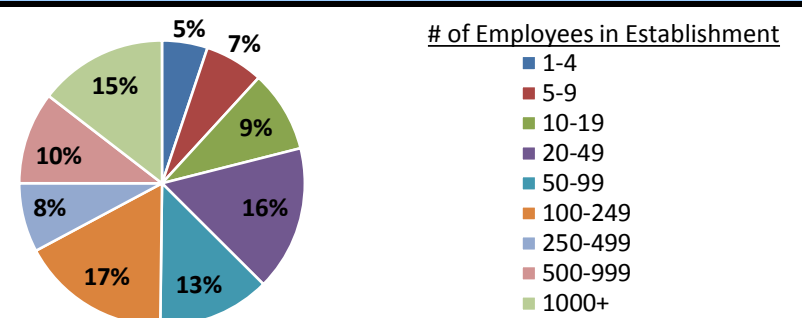
Historical Unemployment Rates



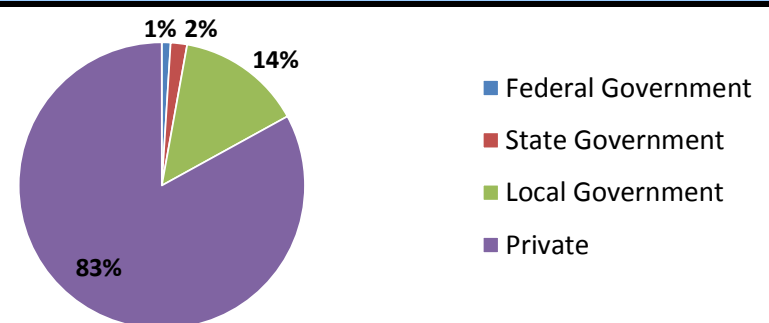
Projected Fastest Growing Industries in WDA (% growth 2014-2024)



Employment by Size Class (2nd Quarter 2016)



Employment by Ownership (2nd Quarter 2016)



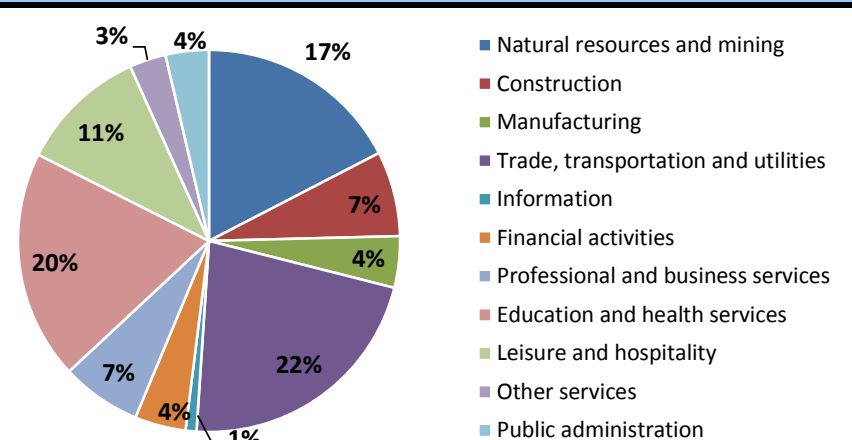
Average Weekly Wage (2nd Quarter 2016)

	Q2 2016	Q1 2016	Q2 2015	Change Quarter	Change Year
WDA	\$1,047	\$1,069	\$1,081	-\$22	-\$34
Texas	\$1,000	\$1,063	\$989	-\$63	\$11
US	N/A	\$1,083	\$1,048	N/A	N/A

Employment by Industry (2nd Quarter 2016, Percent Change)

Industry	Employment	% of total	% Change Quarter	% Change Year
Natural resources and mining	35,137	17.4%	-4.9%	-15.5%
Construction	14,557	7.2%	-6.3%	-8.7%
Manufacturing	8,789	4.4%	-6.7%	-19.5%
Trade, transportation and utilities	44,655	22.1%	-2.1%	-7.8%
Information	1,858	0.9%	0.7%	3.5%
Financial activities	8,725	4.3%	-1.1%	-10.9%
Professional and business services	13,668	6.8%	-3.8%	-11.9%
Education and health services	39,188	19.4%	0.3%	2.8%
Leisure and hospitality	21,813	10.8%	3.9%	-2.0%
Other services	6,231	3.1%	-1.4%	-7.7%
Public administration	7,406	3.7%	1.6%	0.8%
Total	202,027	100.0%	-2.0%	-7.5%

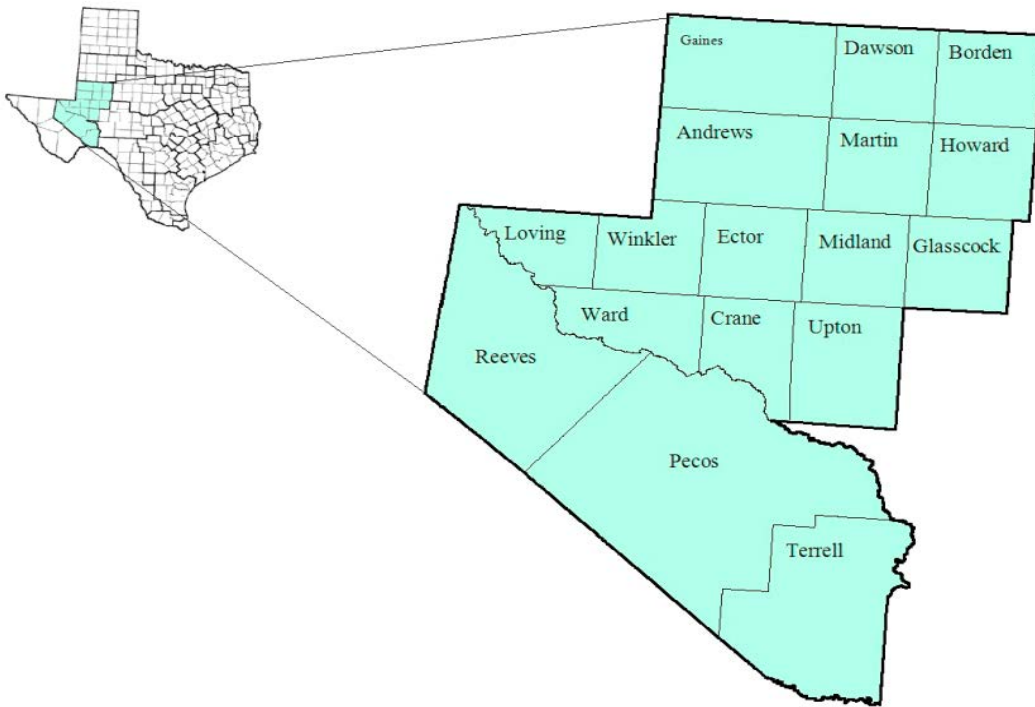
Employment by Industry (2nd Quarter 2016)



PERMIAN BASIN													
October-16						September-16				Oct-15			
Area	Area Type	Labor Force	Employment	Unemployment	Rate	Labor Force	Employment	Unemployment	Rate	Labor Force	Employment	Unemployment	Rate
Texas	State	13,334,556	12,749,778	584,778	4.4	13,416,525	12,754,630	661,895	4.9	13,114,424	12,531,868	582,556	4.4
Midland	MSA	89,598	86,083	3,515	3.9	90,102	86,033	4,069	4.5	88,879	85,517	3,362	3.8
Odessa	MSA	78,394	73,951	4,443	5.7	79,253	74,058	5,195	6.6	78,174	74,088	4,086	5.2
Permian Basin	WDA	229,259	218,224	11,035	4.8	231,446	218,685	12,761	5.5	229,960	219,568	10,392	4.5
Andrews	County	8,808	8,430	378	4.3	8,944	8,518	426	4.8	9,170	8,808	362	3.9
Borden	County	386	375	11	2.8	399	386	13	3.3	418	403	15	3.6
Crane	County	1,734	1,615	119	6.9	1,755	1,607	148	8.4	1,809	1,683	126	7.0
Dawson	County	4,614	4,390	224	4.9	4,596	4,331	265	5.8	4,778	4,565	213	4.5
Ector	County	78,394	73,951	4,443	5.7	79,253	74,058	5,195	6.6	78,174	74,088	4,086	5.2
Gaines	County	9,264	8,955	309	3.3	9,323	8,977	346	3.7	9,388	9,075	313	3.3
Glasscock	County	762	733	29	3.8	786	754	32	4.1	803	777	26	3.2
Howard	County	13,029	12,295	734	5.6	13,182	12,398	784	5.9	13,031	12,399	632	4.8
Loving	County	94	89	5	5.3	96	92	4	4.2	78	74	4	5.1
Martin	County	2,487	2,387	100	4.0	2,501	2,393	108	4.3	2,524	2,422	102	4.0
Midland	County	87,111	83,696	3,415	3.9	87,601	83,640	3,961	4.5	86,355	83,095	3,260	3.8
Pecos	County	6,586	6,199	387	5.9	6,734	6,290	444	6.6	6,735	6,358	377	5.6
Reeves	County	5,715	5,428	287	5.0	5,728	5,392	336	5.9	5,683	5,368	315	5.5
Terrell	County	418	401	17	4.1	425	405	20	4.7	421	398	23	5.5
Upton	County	1,567	1,489	78	5.0	1,588	1,497	91	5.7	1,758	1,682	76	4.3
Ward	County	5,340	5,057	283	5.3	5,533	5,204	329	5.9	5,749	5,485	264	4.6
Winkler	County	2,950	2,734	216	7.3	3,002	2,743	259	8.6	3,086	2,888	198	6.4
Big Spring	City	9,506	8,928	578	6.1	9,611	9,003	608	6.3	9,494	9,003	491	5.2
Midland	City	71,344	68,675	2,669	3.7	71,706	68,629	3,077	4.3	70,776	68,182	2,594	3.7
Odessa	City	59,824	56,822	3,002	5.0	60,426	56,902	3,524	5.8	59,664	56,917	2,747	4.6

Permian Basin Workforce Development Area

December 2016



WDA Labor Force Statistics

	Dec-16	Nov-16	Dec-15	OTY
CLF	229,293	229,235	230,671	-1,378
Employed	218,568	218,909	220,633	-2,065
Unemployed	10,725	10,326	10,038	687
Rate	4.7%	4.5%	4.4%	0.3%

Texas Labor Force Statistics

	Dec-16	Nov-16	Dec-15	OTY
CLF	13,398,817	13,390,507	13,136,901	261,916
Employed	12,788,890	12,823,827	12,580,195	208,695
Unemployed	609,927	566,680	556,706	53,221
Rate	4.6%	4.2%	4.2%	0.4%

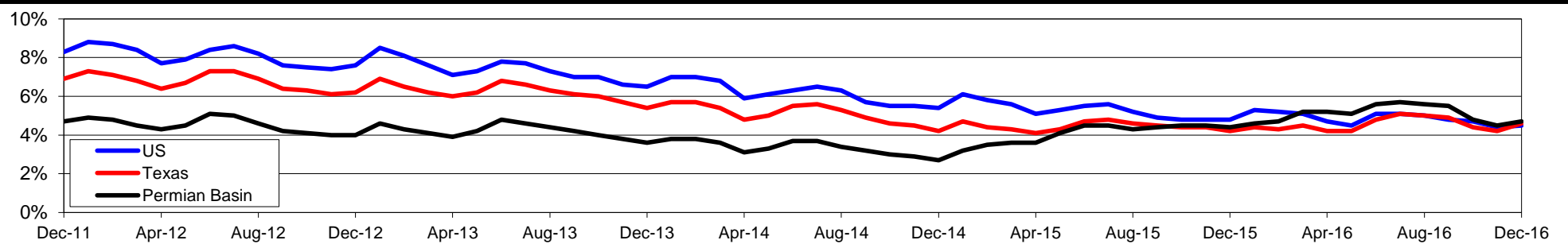
US Labor Force Statistics

	Dec-16	Nov-16	Dec-15	OTY
CLF	158,968,000	159,451,000	157,245,000	1,723,000
Employed	151,798,000	152,385,000	149,703,000	2,095,000
Unemployed	7,170,000	7,066,000	7,542,000	-372,000
Rate	4.5%	4.4%	4.8%	-0.3%

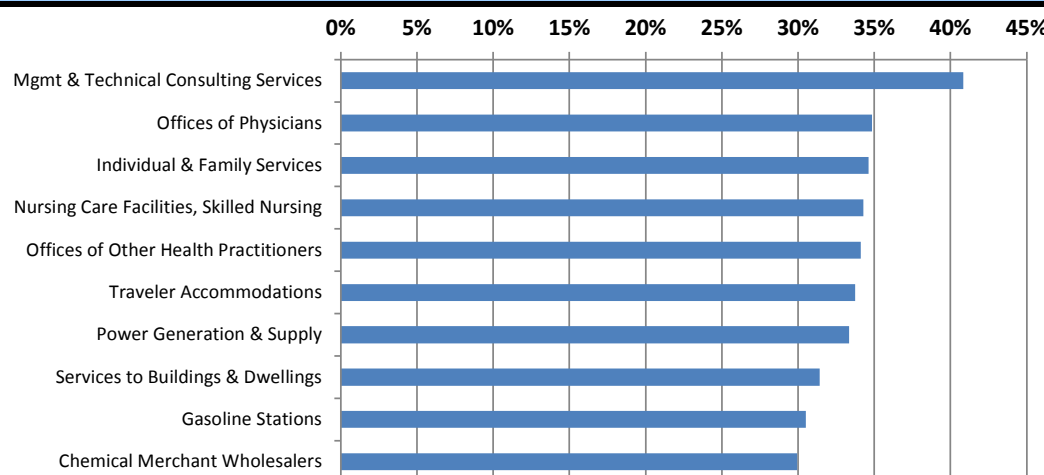
Continued Claims for the Week of the 12th

	Dec-16	Nov-16	Dec-15	OTY
WDA	1,938	2,112	3,050	-1,112
Texas	129,904	126,982	138,530	-8,626

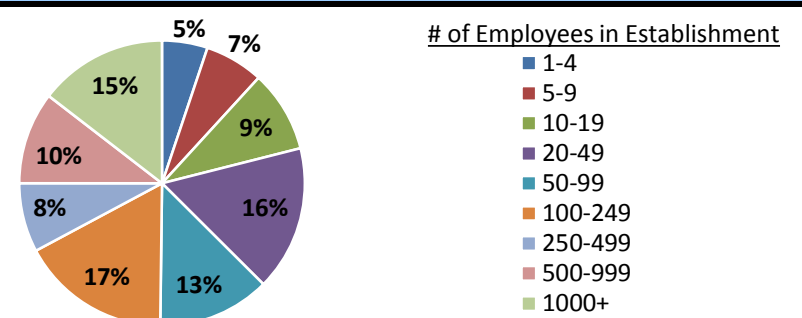
Historical Unemployment Rates



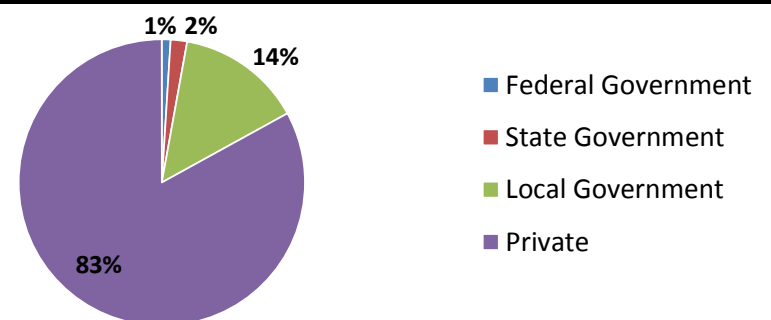
Projected Fastest Growing Industries in WDA (% growth 2014-2024)



Employment by Size Class (2nd Quarter 2016)



Employment by Ownership (2nd Quarter 2016)



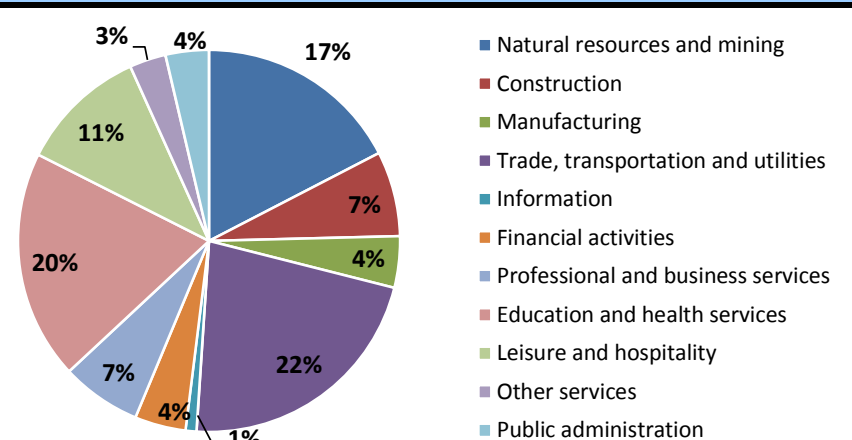
Average Weekly Wage (2nd Quarter 2016)

	Q2 2016	Q1 2016	Q2 2015	Change Quarter	Change Year
WDA	\$1,047	\$1,069	\$1,081	-\$22	-\$34
Texas	\$1,000	\$1,063	\$989	-\$63	\$11
US	\$989	\$1,042	\$968	-\$53	\$21

Employment by Industry (2nd Quarter 2016, Percent Change)

Industry	Employment	% of total	% Change Quarter	% Change Year
Natural resources and mining	35,137	17.4%	-4.9%	-15.5%
Construction	14,557	7.2%	-6.3%	-8.7%
Manufacturing	8,789	4.4%	-6.7%	-19.5%
Trade, transportation and utilities	44,655	22.1%	-2.1%	-7.8%
Information	1,858	0.9%	0.7%	3.5%
Financial activities	8,725	4.3%	-1.1%	-10.9%
Professional and business services	13,668	6.8%	-3.8%	-11.9%
Education and health services	39,188	19.4%	0.3%	2.8%
Leisure and hospitality	21,813	10.8%	3.9%	-2.0%
Other services	6,231	3.1%	-1.4%	-7.7%
Public administration	7,406	3.7%	1.6%	0.8%
Total	202,027	100.0%	-2.0%	-7.5%

Employment by Industry (2nd Quarter 2016)



PERMIAN BASIN													
December-16						November-16				December-15			
Area	Area Type	Labor Force	Employment	Unemployment	Rate	Labor Force	Employment	Unemployment	Rate	Labor Force	Employment	Unemployment	Rate
Texas	State	13,398,817	12,788,890	609,927	4.6	13,390,507	12,823,827	566,680	4.2	13,136,901	12,580,195	556,706	4.2
Midland	MSA	89,935	86,498	3,437	3.8	90,010	86,726	3,284	3.6	89,554	86,311	3,243	3.6
Odessa	MSA	78,458	74,235	4,223	5.4	78,311	74,191	4,120	5.3	78,303	74,285	4,018	5.1
Permian Basin	WDA	229,293	218,568	10,725	4.7	229,235	218,909	10,326	4.5	230,671	220,633	10,038	4.4
Andrews	County	8,596	8,229	367	4.3	8,667	8,317	350	4.0	9,091	8,749	342	3.8
Borden	County	385	374	11	2.9	392	381	11	2.8	414	402	12	2.9
Crane	County	1,725	1,607	118	6.8	1,720	1,608	112	6.5	1,790	1,665	125	7.0
Dawson	County	4,662	4,440	222	4.8	4,645	4,436	209	4.5	4,805	4,604	201	4.2
Ector	County	78,458	74,235	4,223	5.4	78,311	74,191	4,120	5.3	78,303	74,285	4,018	5.1
Gaines	County	9,190	8,873	317	3.4	9,137	8,847	290	3.2	9,278	8,980	298	3.2
Glasscock	County	730	704	26	3.6	736	712	24	3.3	786	757	29	3.7
Howard	County	13,037	12,322	715	5.5	13,047	12,343	704	5.4	13,107	12,481	626	4.8
Loving	County	99	94	5	5.1	98	93	5	5.1	80	76	4	5.0
Martin	County	2,491	2,386	105	4.2	2,486	2,393	93	3.7	2,498	2,414	84	3.4
Midland	County	87,444	84,112	3,332	3.8	87,524	84,333	3,191	3.6	87,056	83,897	3,159	3.6
Pecos	County	6,505	6,107	398	6.1	6,538	6,160	378	5.8	6,757	6,419	338	5.0
Reeves	County	5,793	5,515	278	4.8	5,733	5,461	272	4.7	5,688	5,410	278	4.9
Terrell	County	416	394	22	5.3	416	398	18	4.3	406	388	18	4.4
Upton	County	1,529	1,456	73	4.8	1,538	1,465	73	4.7	1,759	1,682	77	4.4
Ward	County	5,258	4,978	280	5.3	5,287	5,025	262	5.0	5,806	5,550	256	4.4
Winkler	County	2,975	2,742	233	7.8	2,960	2,746	214	7.2	3,047	2,874	173	5.7
Big Spring	City	9,525	8,947	578	6.1	9,528	8,963	565	5.9	9,555	9,063	492	5.1
Midland	City	71,636	69,016	2,620	3.7	71,698	69,198	2,500	3.5	71,306	68,840	2,466	3.5
Odessa	City	59,839	57,041	2,798	4.7	59,768	57,011	2,757	4.6	59,742	57,076	2,666	4.5