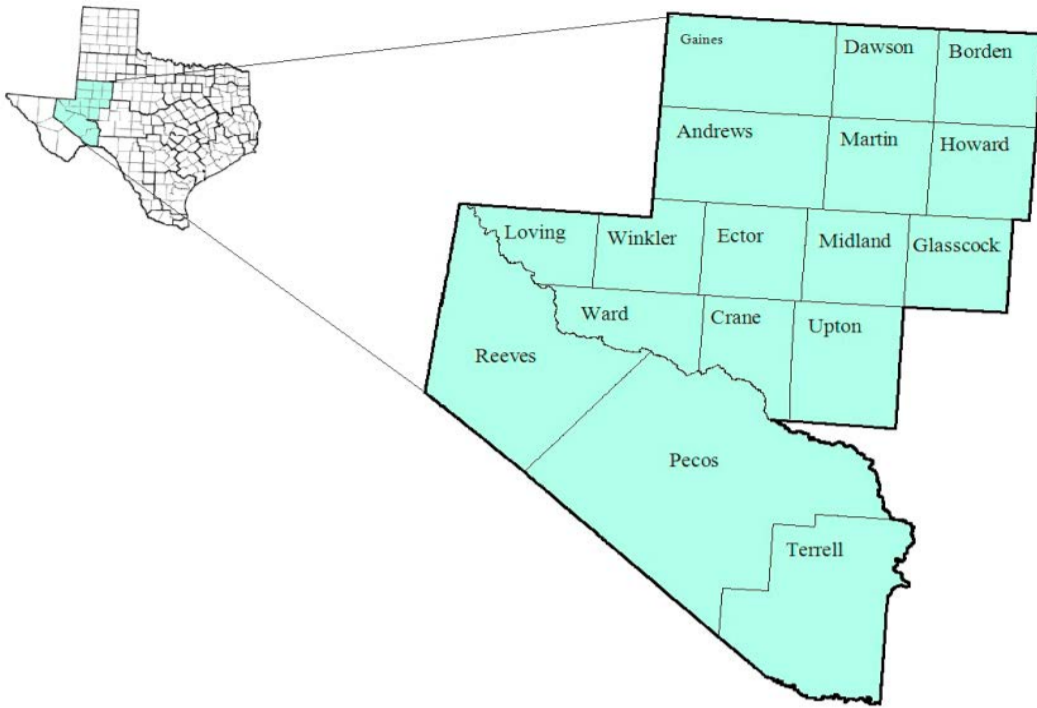


Permian Basin Workforce Development Area

January 2017



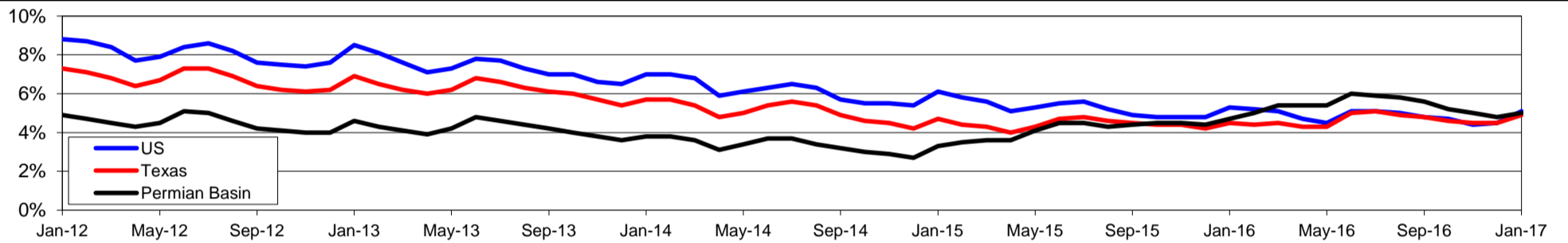
WDA Labor Force Statistics				
	Jan-17	Dec-16	Jan-16	OTY
CLF	221,335	221,099	227,474	-6,139
Employed	210,218	210,396	216,674	-6,456
Unemployed	11,117	10,703	10,800	317
Rate	5.0%	4.8%	4.7%	0.3%

Texas Labor Force Statistics				
	Jan-17	Dec-16	Jan-16	OTY
CLF	13,357,997	13,353,321	13,112,957	245,040
Employed	12,697,121	12,747,329	12,521,460	175,661
Unemployed	660,876	605,992	591,497	69,379
Rate	4.9%	4.5%	4.5%	0.4%

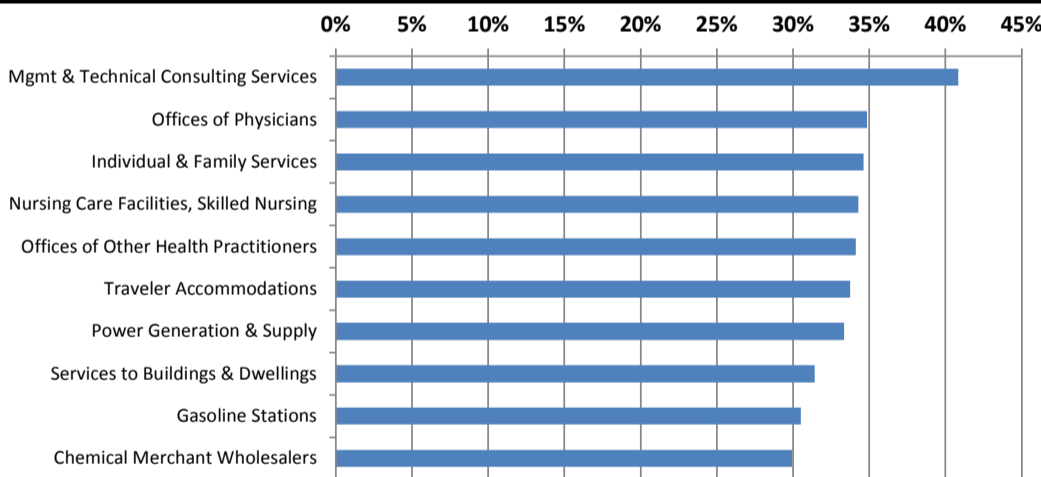
US Labor Force Statistics				
	Jan-17	Dec-16	Jan-16	OTY
CLF	158,676,000	158,968,000	157,347,000	1,329,000
Employed	150,527,000	151,798,000	149,037,000	1,490,000
Unemployed	8,149,000	7,170,000	8,309,000	-160,000
Rate	5.1%	4.5%	5.3%	-0.2%

Continued Claims for the Week of the 12th				
	Jan-17	Dec-16	Jan-16	OTY
WDA	1,661	1,948	3,204	-1,543
Texas	131,825	129,904	143,155	-11,330

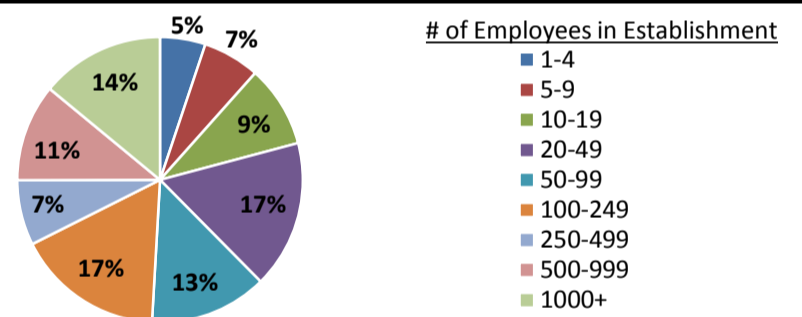
Historical Unemployment Rates



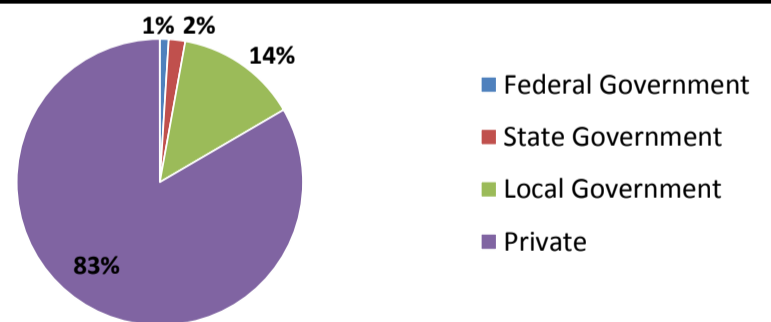
Projected Fastest Growing Industries in WDA (% growth 2014-2024)



Employment by Size Class (3rd Quarter 2016)



Employment by Ownership (3rd Quarter 2016)



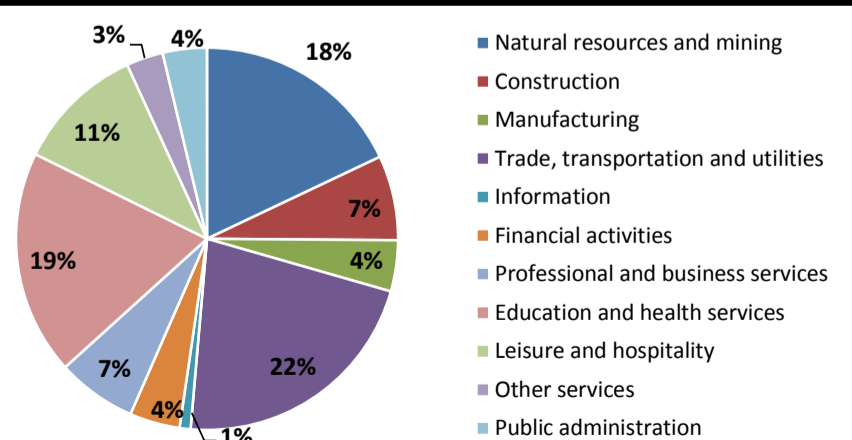
Average Weekly Wage (3rd Quarter 2016)

	Q3 2016	Q2 2016	Q3 2015	Change	
				Quarter	Year
WDA	\$1,054	\$1,047	\$1,060	\$7	-\$6
Texas	\$1,042	\$1,000	\$999	\$42	\$43
US	\$1,027	\$988	\$974	\$39	\$53

Employment by Industry (3rd Quarter 2016, Percent Change)

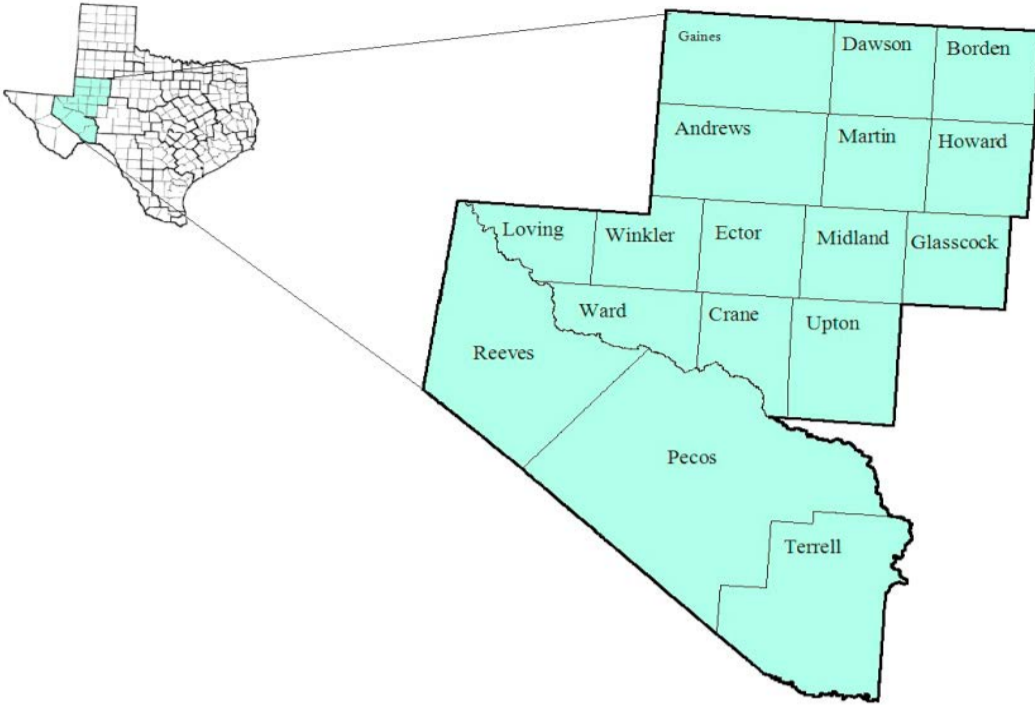
Industry	Employment	% of total	% Change	
			Quarter	Year
Natural resources and mining	36,083	18.0%	2.6%	-10.4%
Construction	14,412	7.2%	-1.1%	-6.8%
Manufacturing	8,663	4.3%	-1.5%	-17.7%
Trade, transportation and utilities	44,114	21.9%	-1.3%	-7.3%
Information	1,860	0.9%	0.0%	5.8%
Financial activities	8,550	4.3%	-2.0%	-9.9%
Professional and business services	13,548	6.7%	-0.7%	-12.2%
Education and health services	38,165	19.0%	-2.6%	2.3%
Leisure and hospitality	21,844	10.9%	0.2%	-2.2%
Other services	6,228	3.1%	0.2%	-6.6%
Public administration	7,528	3.7%	1.6%	2.4%
Total	200,995	100.0%	-0.5%	-6.2%

Employment by Industry (3rd Quarter 2016)



Permian Basin Workforce Development Area

March 2017



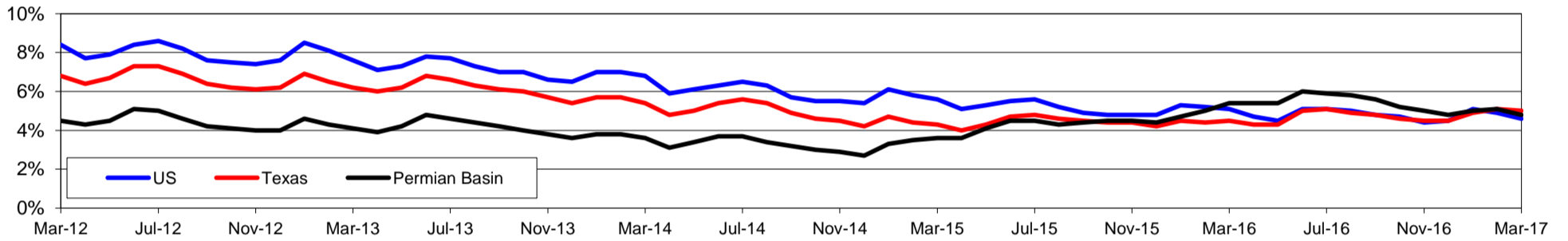
WDA Labor Force Statistics				
	Mar-17	Feb-17	Mar-16	OTY
CLF	222,433	223,263	226,723	-4,290
Employed	211,646	211,894	214,556	-2,910
Unemployed	10,787	11,369	12,167	-1,380
Rate	4.8%	5.1%	5.4%	-0.6%

Texas Labor Force Statistics				
	Mar-17	Feb-17	Mar-16	OTY
CLF	13,513,734	13,471,275	13,239,718	274,016
Employed	12,838,130	12,777,787	12,648,877	189,253
Unemployed	675,604	693,488	590,841	84,763
Rate	5.0%	5.1%	4.5%	0.5%

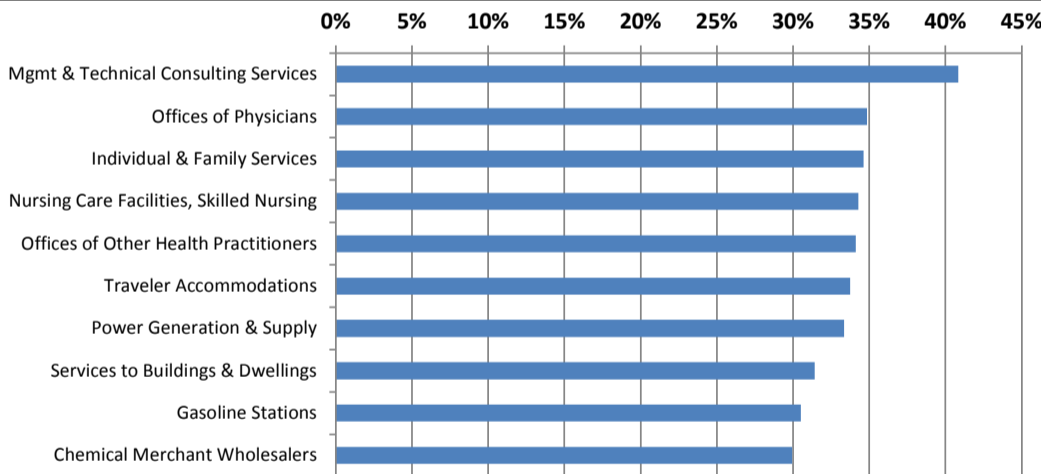
US Labor Force Statistics				
	Mar-17	Feb-17	Mar-16	OTY
CLF	159,912,000	159,482,000	158,854,000	1,058,000
Employed	152,628,000	151,594,000	150,738,000	1,890,000
Unemployed	7,284,000	7,887,000	8,116,000	-832,000
Rate	4.6%	4.9%	5.1%	-0.5%

Continued Claims for the Week of the 12th				
	Mar-17	Feb-17	Mar-16	OTY
WDA	1,304	1,428	4,350	-3,046
Texas	122,950	132,086	145,342	-22,392

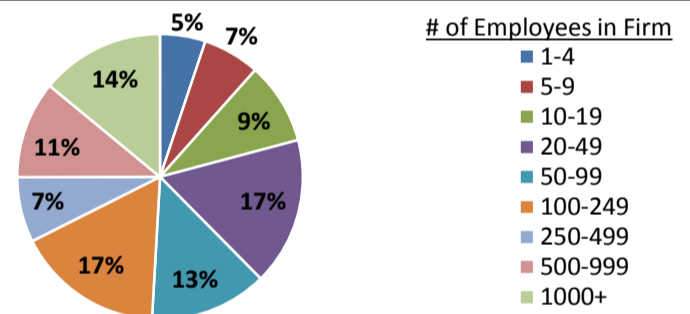
Historical Unemployment Rates



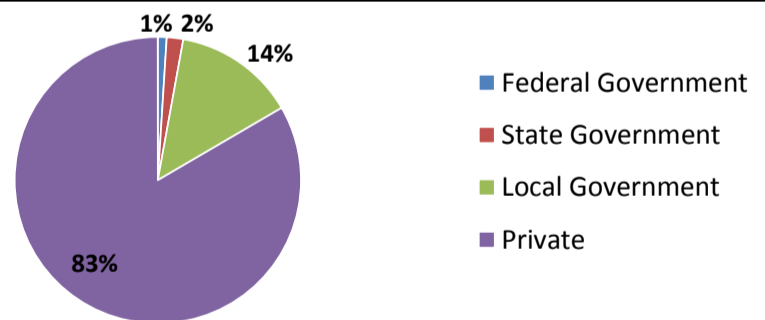
Projected Fastest Growing Industries in WDA (% growth 2014-2024)



Employment by Size Class (3rd Quarter 2016)



Employment by Ownership (3rd Quarter 2016)



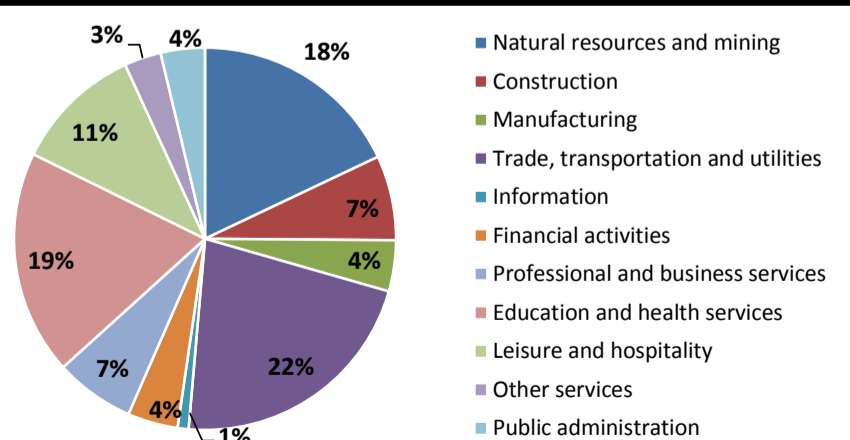
Average Weekly Wage (3rd Quarter 2016)

	Q3 2016	Q2 2016	Q3 2015	Change	
				Quarter	Year
WDA	\$1,054	\$1,047	\$1,060	\$7	-\$6
Texas	\$1,042	\$1,000	\$999	\$42	\$43
US	\$1,027	\$988	\$974	\$39	\$53

Employment by Industry (3rd Quarter 2016, Percent Change)

Industry	Employment	% of total	% Change	
			Quarter	Year
Natural resources and mining	36,083	18.0%	2.6%	-10.4%
Construction	14,412	7.2%	-1.1%	-6.8%
Manufacturing	8,663	4.3%	-1.5%	-17.7%
Trade, transportation and utilities	44,114	21.9%	-1.3%	-7.3%
Information	1,860	0.9%	0.0%	5.8%
Financial activities	8,550	4.3%	-2.0%	-9.9%
Professional and business services	13,548	6.7%	-0.7%	-12.2%
Education and health services	38,165	19.0%	-2.6%	2.3%
Leisure and hospitality	21,844	10.9%	0.2%	-2.2%
Other services	6,228	3.1%	0.2%	-6.6%
Public administration	7,528	3.7%	1.6%	2.4%
Total	200,995	100.0%	-0.5%	-6.2%

Employment by Industry (3rd Quarter 2016)

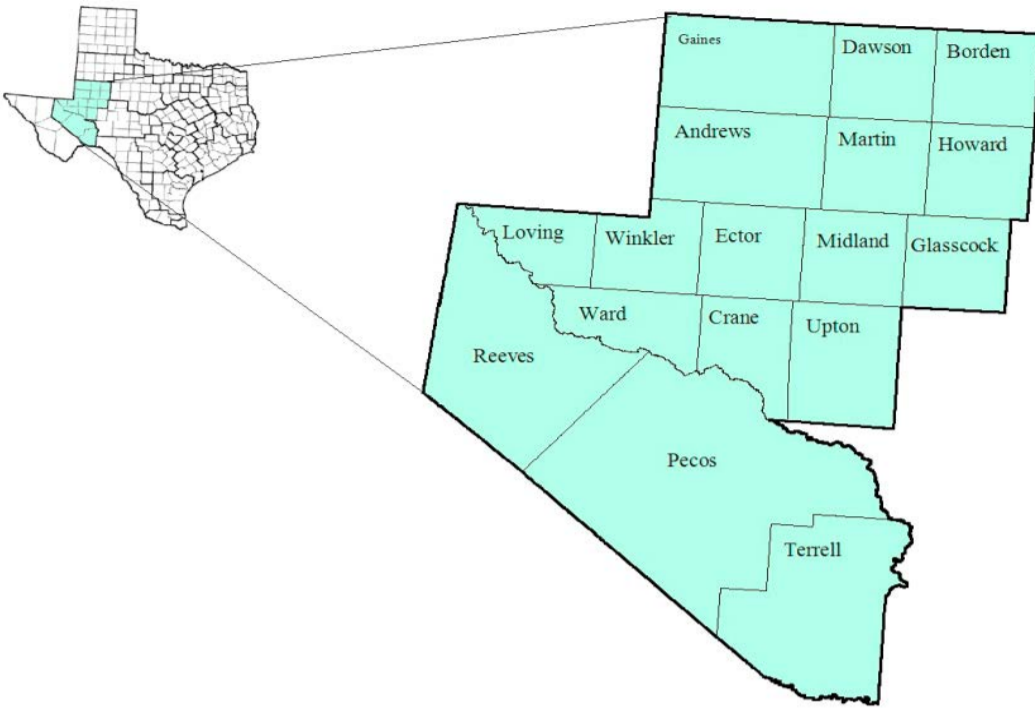


PERMIAN BASIN

PERMIAN BASIN													
March-17					February-17					March-16			
Area	Area Type	Labor Force	Employment	Unemployment	Rate	Labor Force	Employment	Unemployment	Rate	Labor Force	Employment	Unemployment	Rate
Texas	State	13,513,734	12,838,130	675,604	5.0	13,471,275	12,777,787	693,488	5.1	13,239,718	12,648,877	590,841	4.5
Midland	MSA	86,834	83,354	3,480	4.0	87,200	83,537	3,663	4.2	87,933	84,024	3,909	4.4
Odessa	MSA	75,194	70,989	4,205	5.6	75,732	71,310	4,422	5.8	76,562	71,685	4,877	6.4
Permian Basin	WDA	222,433	211,646	10,787	4.8	223,263	211,894	11,369	5.1	226,723	214,556	12,167	5.4
Andrews	County	8,293	7,948	345	4.2	8,432	8,054	378	4.5	8,773	8,327	446	5.1
Borden	County	386	375	11	2.8	375	363	12	3.2	404	389	15	3.7
Crane	County	1,707	1,595	112	6.6	1,704	1,581	123	7.2	1,825	1,648	177	9.7
Dawson	County	4,648	4,375	273	5.9	4,553	4,278	275	6.0	4,654	4,421	233	5.0
Ector	County	75,194	70,989	4,205	5.6	75,732	71,310	4,422	5.8	76,562	71,685	4,877	6.4
Gaines	County	8,920	8,578	342	3.8	8,820	8,468	352	4.0	9,301	8,956	345	3.7
Glasscock	County	744	722	22	3.0	706	683	23	3.3	786	759	27	3.4
Howard	County	13,001	12,287	714	5.5	12,988	12,228	760	5.9	13,432	12,694	738	5.5
Loving	County	95	89	6	6.3	97	91	6	6.2	88	84	4	4.5
Martin	County	2,484	2,376	108	4.3	2,438	2,326	112	4.6	2,515	2,410	105	4.2
Midland	County	84,350	80,978	3,372	4.0	84,762	81,211	3,551	4.2	85,418	81,614	3,804	4.5
Pecos	County	6,458	6,067	391	6.1	6,466	6,051	415	6.4	6,481	6,097	384	5.9
Reeves	County	5,953	5,668	285	4.8	5,962	5,647	315	5.3	5,966	5,617	349	5.8
Terrell	County	455	427	28	6.2	443	415	28	6.3	420	403	17	4.0
Upton	County	1,523	1,449	74	4.9	1,519	1,444	75	4.9	1,612	1,518	94	5.8
Ward	County	5,310	5,037	273	5.1	5,338	5,051	287	5.4	5,379	5,056	323	6.0
Winkler	County	2,912	2,686	226	7.8	2,928	2,693	235	8.0	3,107	2,878	229	7.4
Big Spring	City	9,481	8,910	571	6.0	9,489	8,867	622	6.6	9,786	9,205	581	5.9
Midland	City	69,519	66,747	2,772	4.0	69,845	66,939	2,906	4.2	70,363	67,271	3,092	4.4
Odessa	City	57,639	54,670	2,969	5.2	58,087	54,916	3,171	5.5	58,633	55,203	3,430	5.8

Permian Basin Workforce Development Area

April 2017



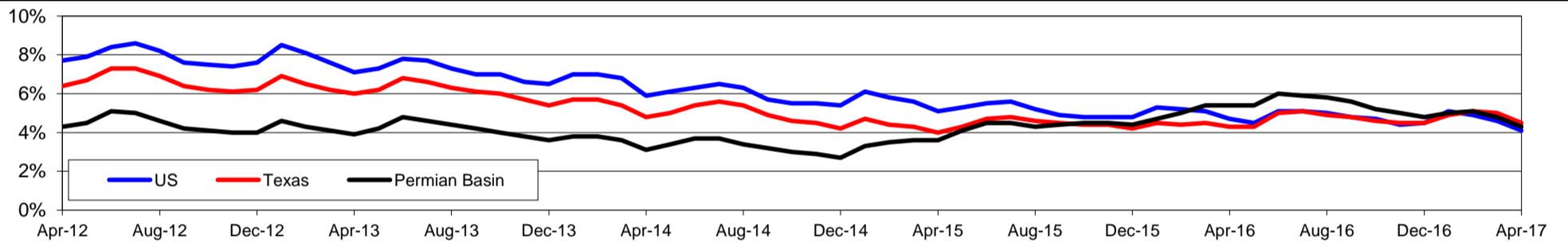
WDA Labor Force Statistics				
	Apr-17	Mar-17	Apr-16	OTY
CLF	221,562	222,488	225,148	-3,586
Employed	212,041	211,714	212,927	-886
Unemployed	9,521	10,774	12,221	-2,700
Rate	4.3%	4.8%	5.4%	-1.1%

Texas Labor Force Statistics				
	Apr-17	Mar-17	Apr-16	OTY
CLF	13,506,742	13,514,563	13,236,855	269,887
Employed	12,895,003	12,838,948	12,672,854	222,149
Unemployed	611,739	675,615	564,001	47,738
Rate	4.5%	5.0%	4.3%	0.2%

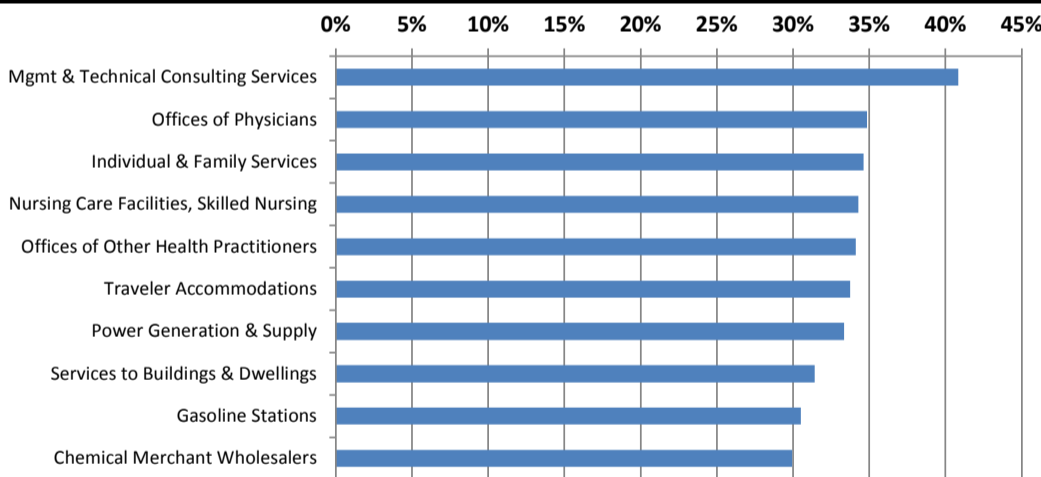
US Labor Force Statistics				
	Apr-17	Mar-17	Apr-16	OTY
CLF	159,817,000	159,912,000	158,488,000	1,329,000
Employed	153,262,000	152,628,000	151,075,000	2,187,000
Unemployed	6,555,000	7,284,000	7,413,000	-858,000
Rate	4.1%	4.6%	4.7%	-0.6%

Continued Claims for the Week of the 12th				
	Apr-17	Mar-17	Apr-16	OTY
WDA	1,180	1,312	4,618	-3,438
Texas	122,950	132,086	145,342	-22,392

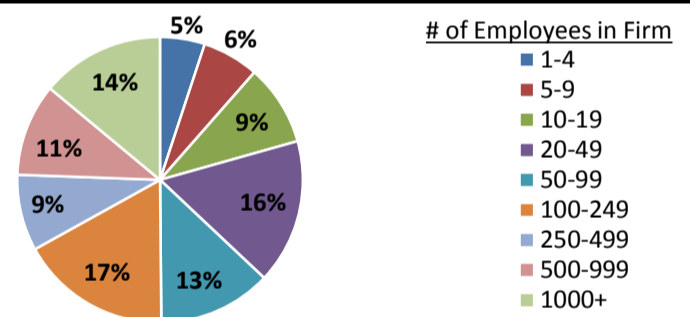
Historical Unemployment Rates



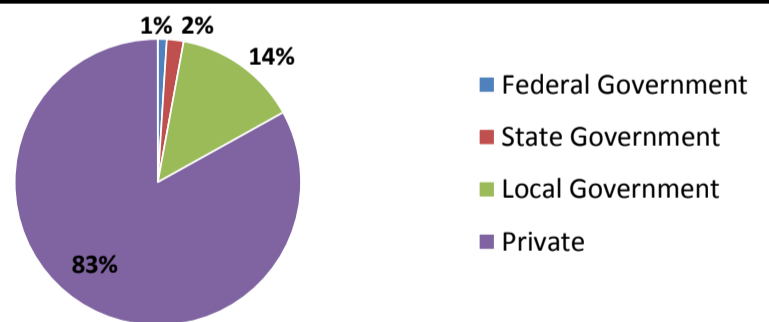
Projected Fastest Growing Industries in WDA (% growth 2014-2024)



Employment by Size Class (4th Quarter 2016)



Employment by Ownership (4th Quarter 2016)



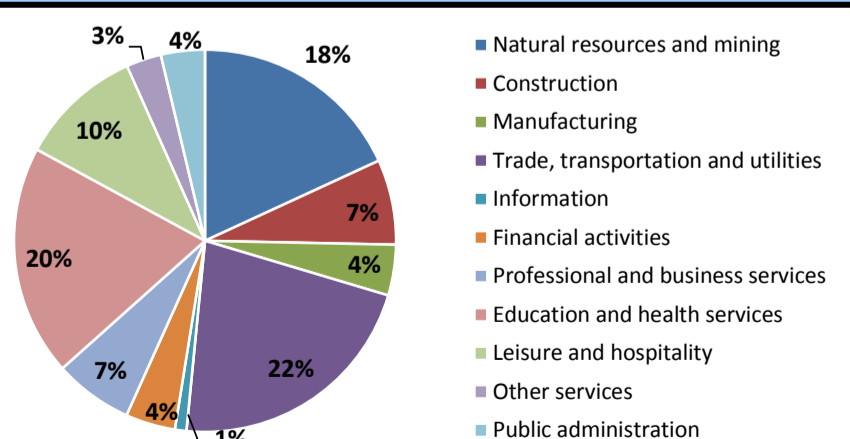
Average Weekly Wage (4th Quarter 2016)

	Q4 2016	Q3 2016	Q4 2015	Change	
				Quarter	Year
WDA	\$1,121	\$1,056	\$1,129	\$66	-\$7
Texas	\$1,072	\$1,042	\$1,099	\$31	-\$27
US	N/A	\$1,027	\$1,083	N/A	N/A

Employment by Industry (4th Quarter 2016, Percent Change)

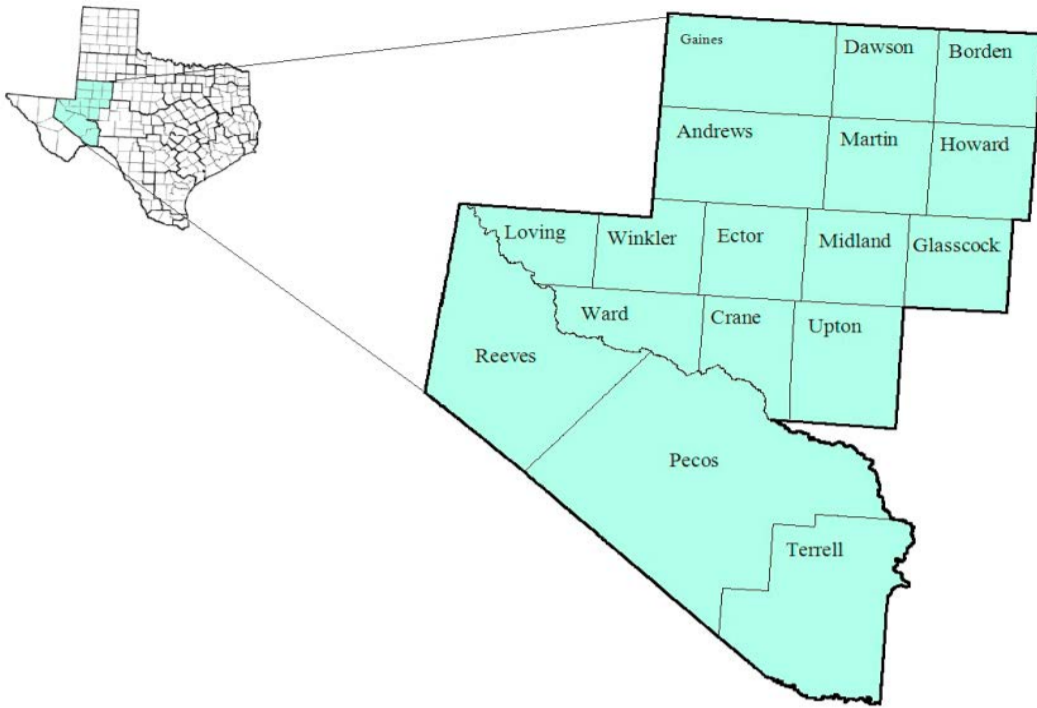
Industry	Employment	% of total	% Change	
			Quarter	Year
Natural resources and mining	37,105	18.1%	2.9%	-5.0%
Construction	14,722	7.2%	1.4%	-2.9%
Manufacturing	8,779	4.3%	1.3%	-11.6%
Trade, transportation and utilities	44,896	21.9%	1.8%	-5.6%
Information	1,993	1.0%	7.2%	11.3%
Financial activities	8,595	4.2%	0.2%	-7.6%
Professional and business services	13,609	6.7%	0.5%	-11.2%
Education and health services	39,955	19.5%	4.6%	2.2%
Leisure and hospitality	21,284	10.4%	-2.5%	-1.4%
Other services	6,067	3.0%	-2.6%	-7.0%
Public administration	7,619	3.7%	1.1%	3.7%
Total	204,624	100.0%	1.7%	-3.8%

Employment by Industry (4th Quarter 2016)



Permian Basin Workforce Development Area

May 2017



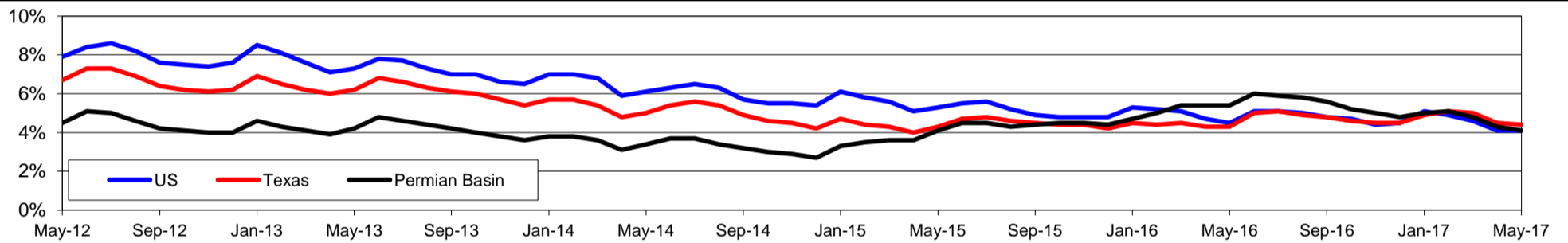
WDA Labor Force Statistics				
	May-17	Apr-17	May-16	OTY
CLF	219,993	221,549	223,582	-3,589
Employed	210,934	212,045	211,469	-535
Unemployed	9,059	9,504	12,113	-3,054
Rate	4.1%	4.3%	5.4%	-1.3%

Texas Labor Force Statistics				
	May-17	Apr-17	May-16	OTY
CLF	13,449,184	13,506,876	13,245,519	203,665
Employed	12,857,230	12,895,129	12,679,140	178,090
Unemployed	591,954	611,747	566,379	25,575
Rate	4.4%	4.5%	4.3%	0.1%

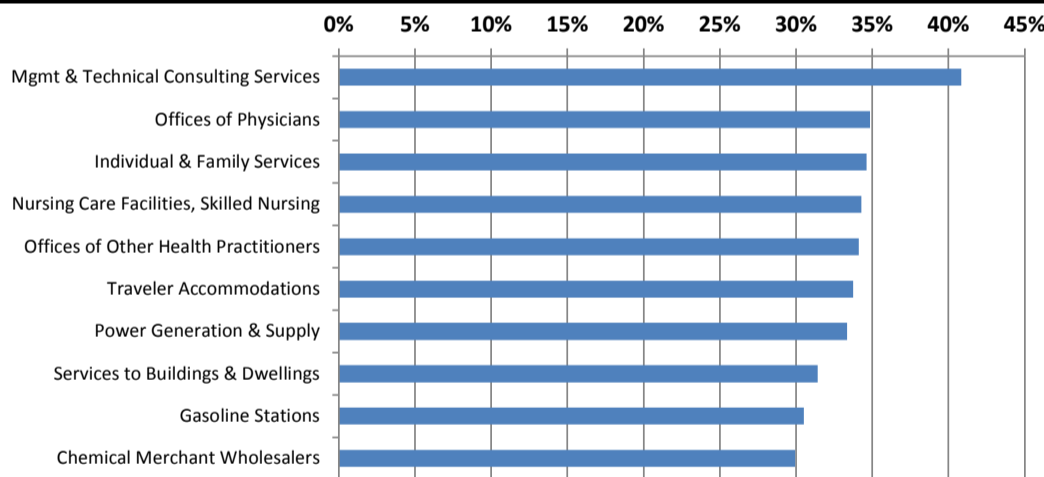
US Labor Force Statistics				
	May-17	Apr-17	May-16	OTY
CLF	159,979,000	159,817,000	158,800,000	1,179,000
Employed	153,407,000	153,262,000	151,594,000	1,813,000
Unemployed	6,572,000	6,555,000	7,207,000	-635,000
Rate	4.1%	4.1%	4.5%	-0.4%

Continued Claims for the Week of the 12th				
	May-17	Apr-17	May-16	OTY
WDA	1,120	1,190	4,552	-3,432
Texas	112,343	116,413	148,489	-36,146

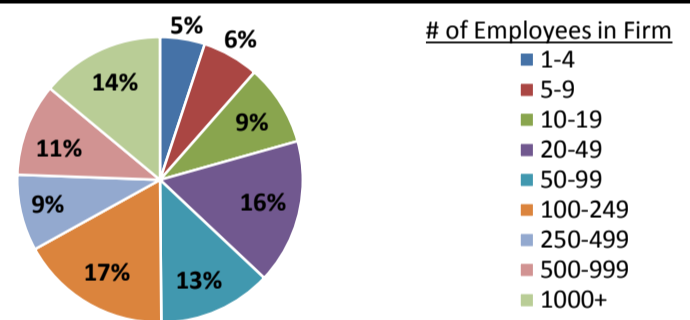
Historical Unemployment Rates



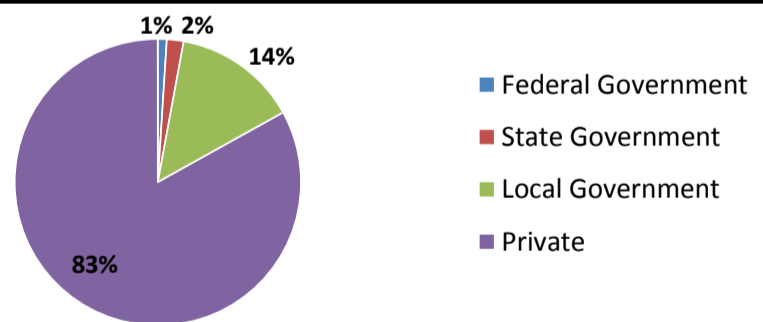
Projected Fastest Growing Industries in WDA (% growth 2014-2024)



Employment by Size Class (4th Quarter 2016)



Employment by Ownership (4th Quarter 2016)



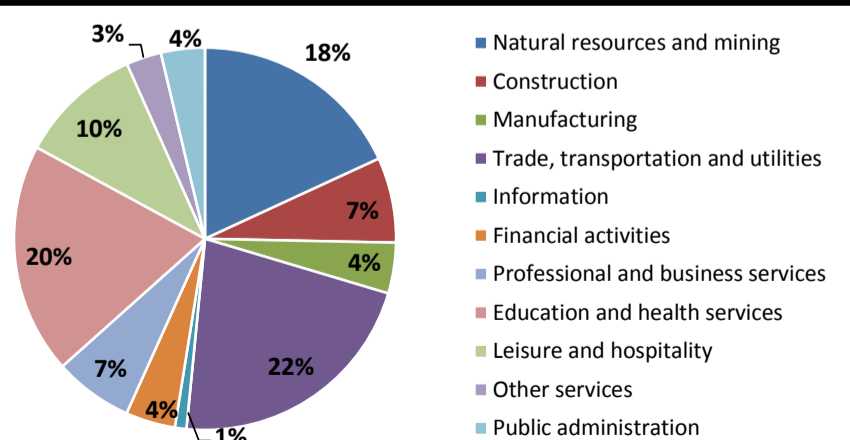
Average Weekly Wage (4th Quarter 2016)

	Q4 2016	Q3 2016	Q4 2015	Change	
				Quarter	Year
WDA	\$1,121	\$1,056	\$1,129	\$66	-\$7
Texas	\$1,072	\$1,042	\$1,099	\$31	-\$27
US	\$1,067	\$1,027	\$1,083	\$40	-\$16

Employment by Industry (4th Quarter 2016, Percent Change)

Industry	Employment	% of total	% Change	
			Quarter	Year
Natural resources and mining	37,105	18.1%	2.9%	-5.0%
Construction	14,722	7.2%	1.4%	-2.9%
Manufacturing	8,779	4.3%	1.3%	-11.6%
Trade, transportation and utilities	44,896	21.9%	1.8%	-5.6%
Information	1,993	1.0%	7.2%	11.3%
Financial activities	8,595	4.2%	0.2%	-7.6%
Professional and business services	13,609	6.7%	0.5%	-11.2%
Education and health services	39,955	19.5%	4.6%	2.2%
Leisure and hospitality	21,284	10.4%	-2.5%	-1.4%
Other services	6,067	3.0%	-2.6%	-7.0%
Public administration	7,619	3.7%	1.1%	3.7%
Total	204,624	100.0%	1.7%	-3.8%

Employment by Industry (4th Quarter 2016)

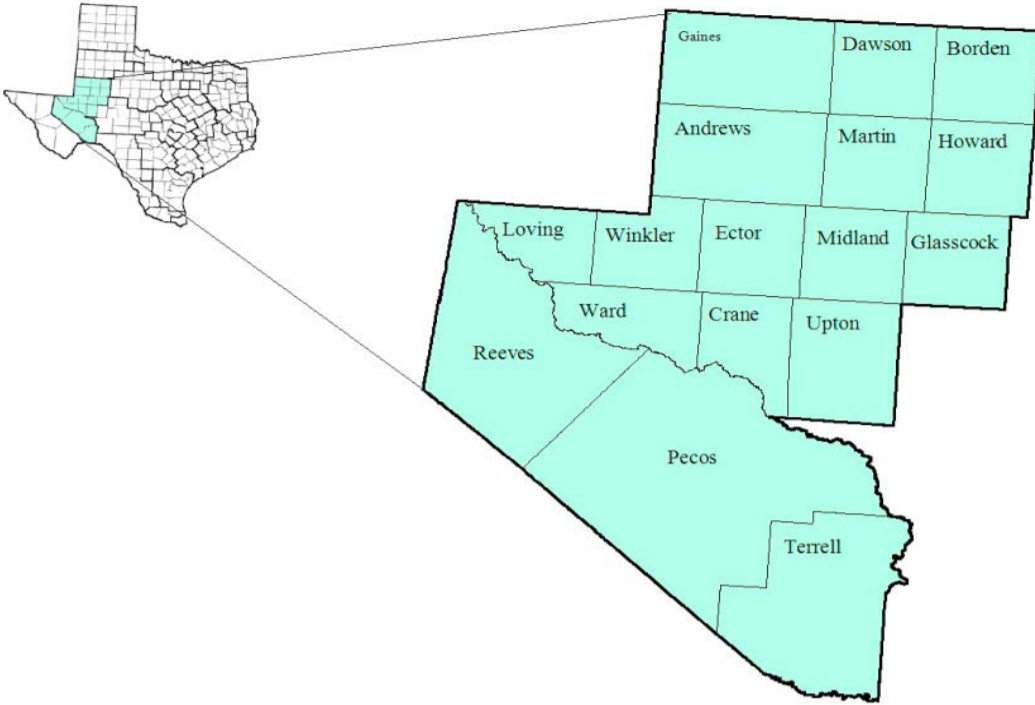


PERMIAN BASIN

PERMIAN BASIN													
May-17					April-17					May-16			
Area	Area Type	Labor Force	Employment	Unemployment	Rate	Labor Force	Employment	Unemployment	Rate	Labor Force	Employment	Unemployment	Rate
Texas	State	13,449,184	12,857,230	591,954	4.4	13,506,876	12,895,129	611,747	4.5	13,245,519	12,679,140	566,379	4.3
Midland	MSA	86,409	83,477	2,932	3.4	86,826	83,800	3,026	3.5	86,478	82,572	3,906	4.5
Odessa	MSA	73,968	70,524	3,444	4.7	74,798	71,109	3,689	4.9	75,213	70,313	4,900	6.5
Permian Basin	WDA	219,993	210,934	9,059	4.1	221,549	212,045	9,504	4.3	223,582	211,469	12,113	5.4
Andrews	County	8,294	8,008	286	3.4	8,297	7,991	306	3.7	8,700	8,268	432	5.0
Borden	County	394	384	10	2.5	388	378	10	2.6	394	381	13	3.3
Crane	County	1,655	1,568	87	5.3	1,670	1,575	95	5.7	1,796	1,632	164	9.1
Dawson	County	4,669	4,408	261	5.6	4,707	4,420	287	6.1	4,814	4,574	240	5.0
Ector	County	73,968	70,524	3,444	4.7	74,798	71,109	3,689	4.9	75,213	70,313	4,900	6.5
Gaines	County	9,046	8,751	295	3.3	8,891	8,596	295	3.3	9,488	9,158	330	3.5
Glasscock	County	741	723	18	2.4	738	719	19	2.6	824	795	29	3.5
Howard	County	12,820	12,204	616	4.8	12,936	12,291	645	5.0	13,272	12,549	723	5.4
Loving	County	100	94	6	6.0	96	91	5	5.2	91	88	3	3.3
Martin	County	2,464	2,374	90	3.7	2,467	2,375	92	3.7	2,502	2,399	103	4.1
Midland	County	83,945	81,103	2,842	3.4	84,359	81,425	2,934	3.5	83,976	80,173	3,803	4.5
Pecos	County	6,232	5,916	316	5.1	6,336	5,990	346	5.5	6,397	6,033	364	5.7
Reeves	County	5,754	5,497	257	4.5	5,874	5,611	263	4.5	5,813	5,463	350	6.0
Terrell	County	427	404	23	5.4	439	414	25	5.7	423	410	13	3.1
Upton	County	1,449	1,383	66	4.6	1,466	1,403	63	4.3	1,587	1,502	85	5.4
Ward	County	5,101	4,854	247	4.8	5,188	4,945	243	4.7	5,235	4,923	312	6.0
Winkler	County	2,934	2,739	195	6.6	2,899	2,712	187	6.5	3,057	2,808	249	8.1
Big Spring	City	9,327	8,849	478	5.1	9,414	8,913	501	5.3	9,662	9,100	562	5.8
Midland	City	69,218	66,850	2,368	3.4	69,541	67,115	2,426	3.5	69,167	66,083	3,084	4.5
Odessa	City	56,815	54,319	2,496	4.4	57,402	54,766	2,636	4.6	57,590	54,149	3,441	6.0

Permian Basin Workforce Development Area

June 2017



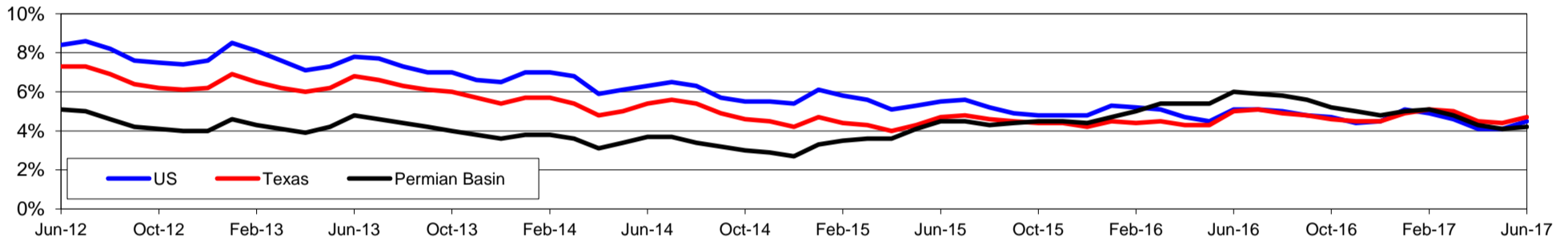
WDA Labor Force Statistics				
	Jun-17	May-17	Jun-16	OTY
CLF	219,703	220,170	223,819	-4,116
Employed	210,514	211,130	210,378	136
Unemployed	9,189	9,040	13,441	-4,252
Rate	4.2%	4.1%	6.0%	-1.8%

Texas Labor Force Statistics				
	Jun-17	May-17	Jun-16	OTY
CLF	13,464,322	13,450,012	13,319,665	144,657
Employed	12,833,254	12,858,020	12,656,717	176,537
Unemployed	631,068	591,992	662,948	-31,880
Rate	4.7%	4.4%	5.0%	-0.3%

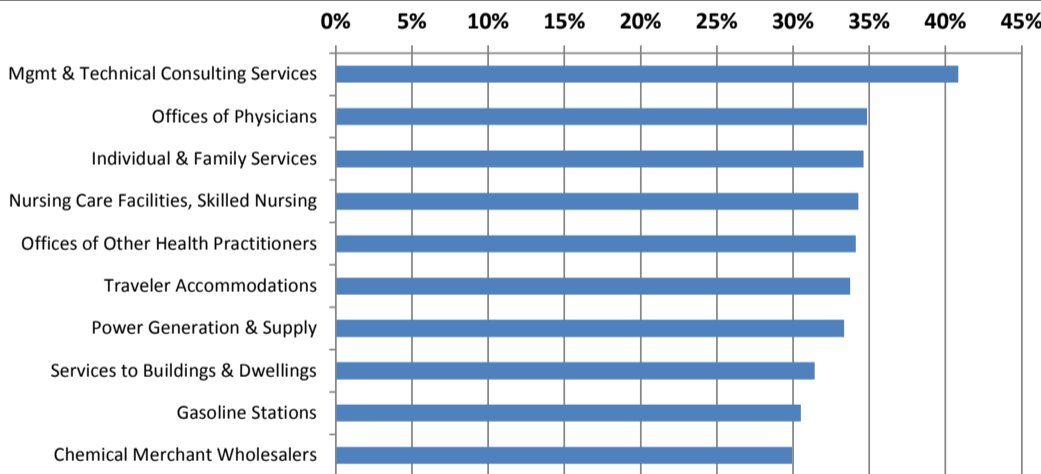
US Labor Force Statistics				
	Jun-17	May-17	Jun-16	OTY
CLF	161,337,000	159,979,000	160,135,000	1,202,000
Employed	154,086,000	153,407,000	151,990,000	2,096,000
Unemployed	7,250,000	6,572,000	8,144,000	-894,000
Rate	4.5%	4.1%	5.1%	-0.6%

Continued Claims for the Week of the 12th				
	Jun-17	May-17	Jun-16	OTY
WDA	1,047	1,127	4,211	-3,164
Texas	123,045	113,603	157,420	-34,375

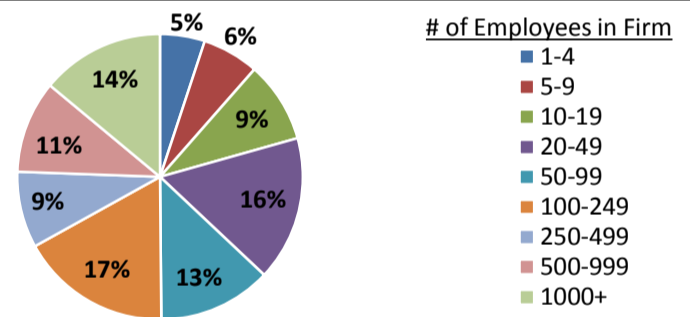
Historical Unemployment Rates



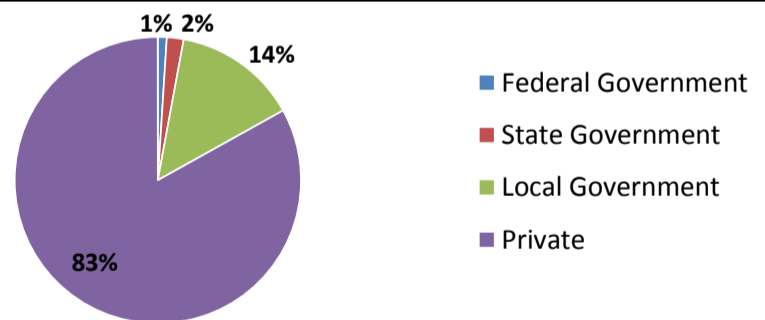
Projected Fastest Growing Industries in WDA (% growth 2014-2024)



Employment by Size Class (4th Quarter 2016)



Employment by Ownership (4th Quarter 2016)



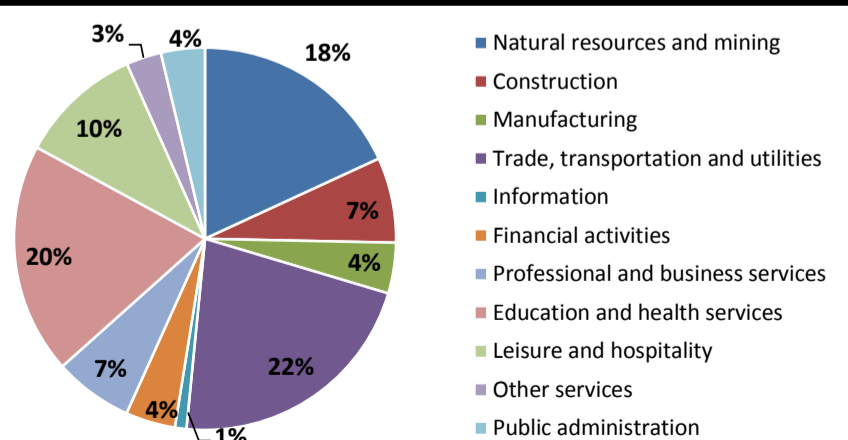
Average Weekly Wage (4th Quarter 2016)

	Q4 2016	Q3 2016	Q4 2015	Change	
				Quarter	Year
WDA	\$1,121	\$1,056	\$1,129	\$66	-\$7
Texas	\$1,072	\$1,042	\$1,099	\$31	-\$27
US	\$1,067	\$1,027	\$1,083	\$40	-\$16

Employment by Industry (4th Quarter 2016, Percent Change)

Industry	Employment	% of total	% Change	
			Quarter	Year
Natural resources and mining	37,105	18.1%	2.9%	-5.0%
Construction	14,722	7.2%	1.4%	-2.9%
Manufacturing	8,779	4.3%	1.3%	-11.6%
Trade, transportation and utilities	44,896	21.9%	1.8%	-5.6%
Information	1,993	1.0%	7.2%	11.3%
Financial activities	8,595	4.2%	0.2%	-7.6%
Professional and business services	13,609	6.7%	0.5%	-11.2%
Education and health services	39,955	19.5%	4.6%	2.2%
Leisure and hospitality	21,284	10.4%	-2.5%	-1.4%
Other services	6,067	3.0%	-2.6%	-7.0%
Public administration	7,619	3.7%	1.1%	3.7%
Total	204,624	100.0%	1.7%	-3.8%

Employment by Industry (4th Quarter 2016)

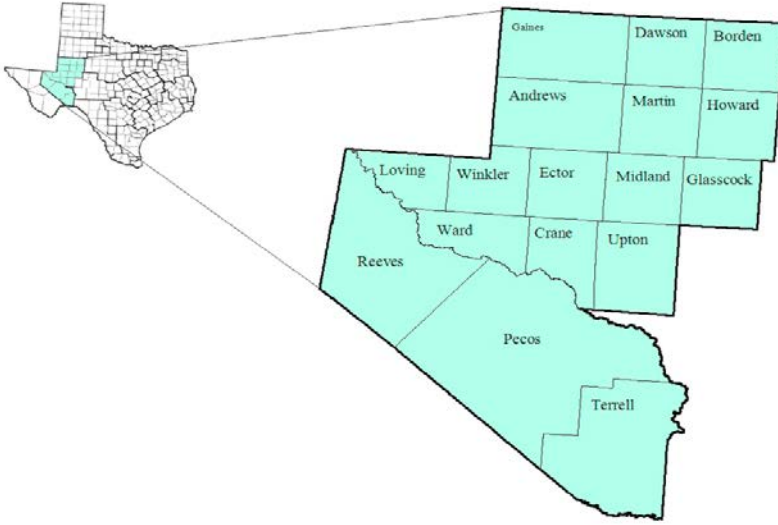


PERMIAN BASIN

	June-17				May-17				June-16				
Area	Area Type	Labor Force	Employment	Unemployment	Rate	Labor Force	Employment	Unemployment	Rate	Labor Force	Employment	Unemployment	Rate
Texas	State	13,464,322	12,833,254	631,068	4.7	13,450,012	12,858,020	591,992	4.4	13,319,665	12,656,717	662,948	5.0
Midland	MSA	86,440	83,422	3,018	3.5	86,445	83,516	2,929	3.4	86,550	82,254	4,296	5.0
Odessa	MSA	73,686	70,243	3,443	4.7	74,084	70,649	3,435	4.6	75,298	69,795	5,503	7.3
Permian Basin	WDA	219,703	210,514	9,189	4.2	220,170	211,130	9,040	4.1	223,819	210,378	13,441	6.0
Andrews	County	8,367	8,057	310	3.7	8,297	8,012	285	3.4	8,707	8,235	472	5.4
Borden	County	394	381	13	3.3	394	384	10	2.5	402	387	15	3.7
Crane	County	1,652	1,564	88	5.3	1,658	1,569	89	5.4	1,805	1,626	179	9.9
Dawson	County	4,630	4,358	272	5.9	4,670	4,410	260	5.6	4,761	4,494	267	5.6
Ector	County	73,686	70,243	3,443	4.7	74,084	70,649	3,435	4.6	75,298	69,795	5,503	7.3
Gaines	County	9,008	8,695	313	3.5	9,050	8,756	294	3.2	9,385	9,013	372	4.0
Glasscock	County	720	699	21	2.9	742	724	18	2.4	796	759	37	4.6
Howard	County	12,755	12,125	630	4.9	12,825	12,211	614	4.8	13,252	12,450	802	6.1
Loving	County	96	92	4	4.2	100	94	6	6.0	92	88	4	4.3
Martin	County	2,445	2,353	92	3.8	2,465	2,375	90	3.7	2,483	2,357	126	5.1
Midland	County	83,995	81,069	2,926	3.5	83,980	81,141	2,839	3.4	84,067	79,897	4,170	5.0
Pecos	County	6,224	5,907	317	5.1	6,234	5,919	315	5.1	6,482	6,087	395	6.1
Reeves	County	5,802	5,554	248	4.3	5,757	5,500	257	4.5	5,912	5,547	365	6.2
Terrell	County	422	401	21	5.0	426	404	22	5.2	428	413	15	3.5
Upton	County	1,452	1,389	63	4.3	1,450	1,384	66	4.6	1,580	1,483	97	6.1
Ward	County	5,121	4,875	246	4.8	5,103	4,857	246	4.8	5,282	4,935	347	6.6
Winkler	County	2,934	2,752	182	6.2	2,935	2,741	194	6.6	3,087	2,812	275	8.9
Big Spring	City	9,277	8,792	485	5.2	9,331	8,855	476	5.1	9,658	9,028	630	6.5
Midland	City	69,229	66,822	2,407	3.5	69,249	66,881	2,368	3.4	69,247	65,856	3,391	4.9
Odessa	City	56,610	54,107	2,503	4.4	56,902	54,415	2,487	4.4	57,648	53,753	3,895	6.8

Permian Basin Workforce Development Area

July 2017



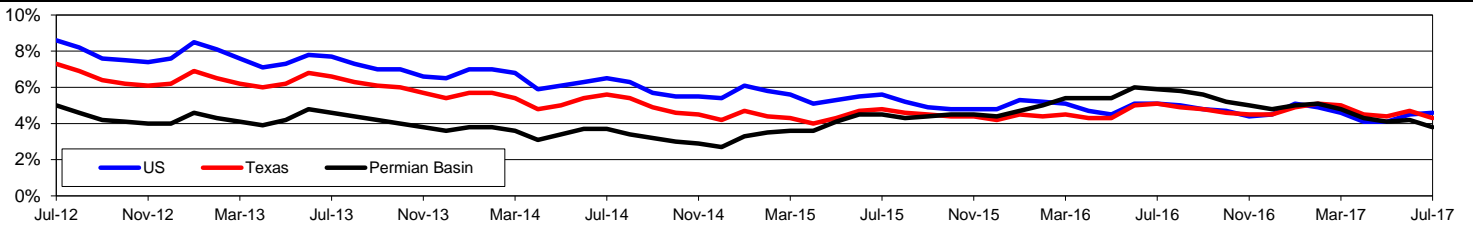
WDA Labor Force Statistics				
	Jul-17	Jun-17	Jul-16	OTY
CLF	219,885	220,138	224,215	-4,330
Employed	211,534	210,953	210,937	597
Unemployed	8,351	9,185	13,278	-4,927
Rate	3.8%	4.2%	5.9%	-2.1%

Texas Labor Force Statistics				
	Jul-17	Jun-17	Jul-16	OTY
CLF	13,433,444	13,462,252	13,356,834	76,610
Employed	12,849,486	12,831,118	12,681,873	167,613
Unemployed	583,958	631,134	674,961	-91,003
Rate	4.3%	4.7%	5.1%	-0.8%

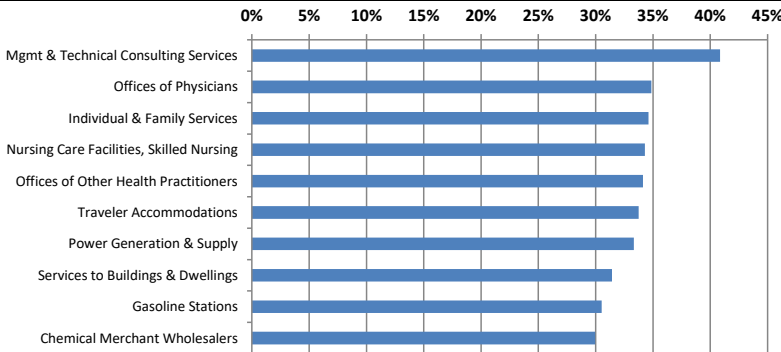
US Labor Force Statistics				
	Jul-17	Jun-17	Jul-16	OTY
CLF	161,911,000	161,337,000	160,705,000	1,206,000
Employed	154,470,000	154,086,000	152,437,000	2,033,000
Unemployed	7,441,000	7,250,000	8,267,000	-826,000
Rate	4.6%	4.5%	5.1%	-0.5%

Continued Claims for the Week of the 12th				
	Jul-17	Jun-17	Jul-16	OTY
WDA	993	1,062	3,841	-2,848
Texas	123,407	124,197	157,732	-34,325

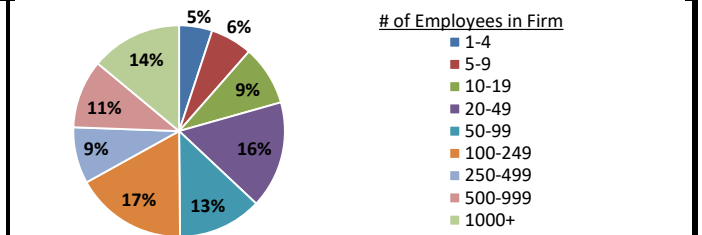
Historical Unemployment Rates



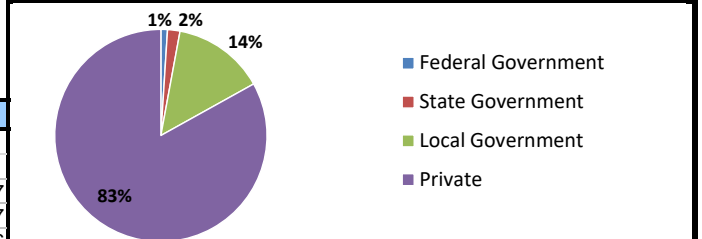
Projected Fastest Growing Industries in WDA (% growth 2014-2024)



Employment by Size Class (4th Quarter 2016)



Employment by Ownership (4th Quarter 2016)



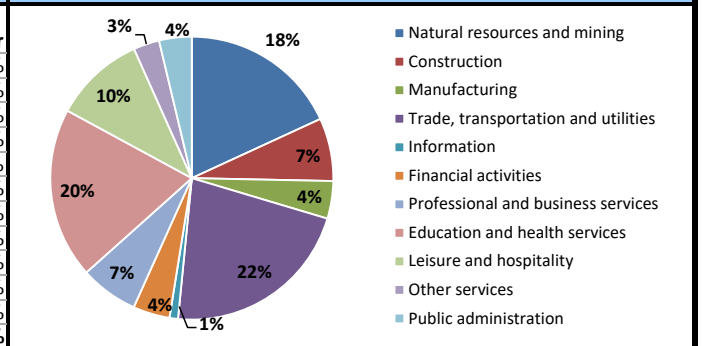
Average Weekly Wage (4th Quarter 2016)

	Q4 2016	Q3 2016	Q4 2015	Change	
				Quarter	Year
WDA	\$1,121	\$1,056	\$1,129	\$66	-\$7
Texas	\$1,072	\$1,042	\$1,099	\$31	-\$27
US	\$1,067	\$1,027	\$1,083	\$40	-\$16

Employment by Industry (4th Quarter 2016, Percent Change)

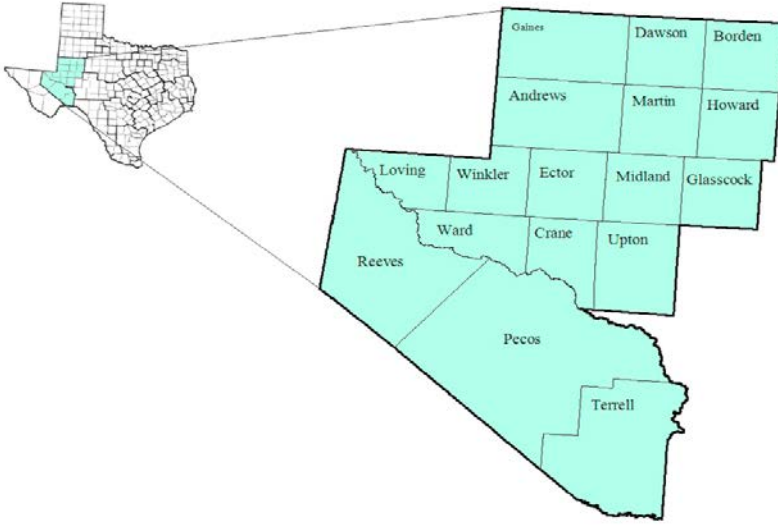
Industry	Employment	% of total	% Change	
			Quarter	Year
Natural resources and mining	37,105	18.1%	2.9%	-5.0%
Construction	14,722	7.2%	1.4%	-2.9%
Manufacturing	8,779	4.3%	1.3%	-11.6%
Trade, transportation and utilities	44,896	21.9%	1.8%	-5.6%
Information	1,993	1.0%	7.2%	11.3%
Financial activities	8,595	4.2%	0.2%	-7.6%
Professional and business services	13,609	6.7%	0.5%	-11.2%
Education and health services	39,955	19.5%	4.6%	2.2%
Leisure and hospitality	21,284	10.4%	-2.5%	-1.4%
Other services	6,067	3.0%	-2.6%	-7.0%
Public administration	7,619	3.7%	1.1%	3.7%
Total	204,624	100.0%	1.7%	-3.8%

Employment by Industry (4th Quarter 2016)



Permian Basin Workforce Development Area

October 2017



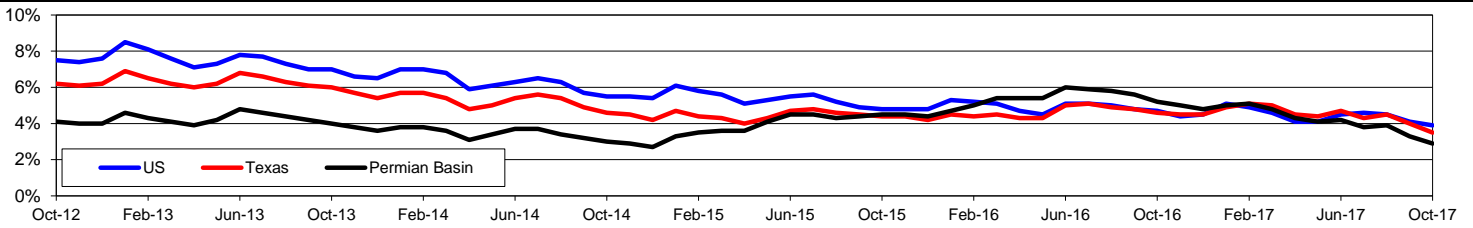
WDA Labor Force Statistics				
	Oct-17	Sep-17	Oct-16	OTY
CLF	220,481	222,675	221,981	-1,500
Employed	214,077	215,242	210,371	3,706
Unemployed	6,404	7,433	11,610	-5,206
Rate	2.9%	3.3%	5.2%	-2.3%

Texas Labor Force Statistics				
	Oct-17	Sep-17	Oct-16	OTY
CLF	13,392,285	13,498,742	13,338,725	53,560
Employed	12,922,084	12,954,820	12,725,859	196,225
Unemployed	470,201	543,922	612,866	-142,665
Rate	3.5%	4.0%	4.6%	-1.1%

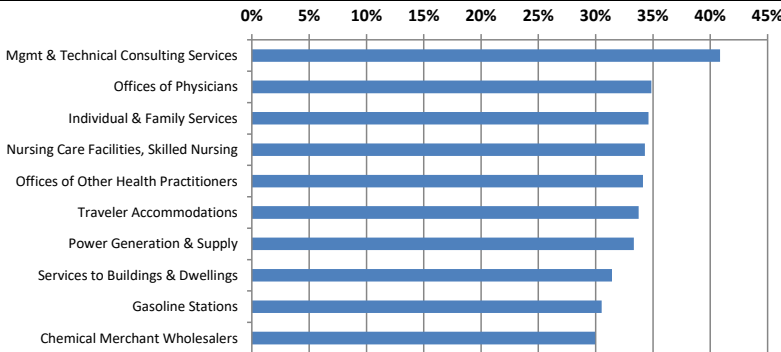
US Labor Force Statistics				
	Oct-17	Sep-17	Oct-16	OTY
CLF	160,465,000	161,049,000	159,783,000	682,000
Employed	154,223,000	154,494,000	152,335,000	1,888,000
Unemployed	6,242,000	6,556,000	7,447,000	-1,205,000
Rate	3.9%	4.1%	4.7%	-0.8%

Continued Claims for the Week of the 12th				
	Oct-17	Sep-17	Oct-16	OTY
WDA	805	874	2,421	-1,616
Texas	104,802	115,057	124,901	-20,099

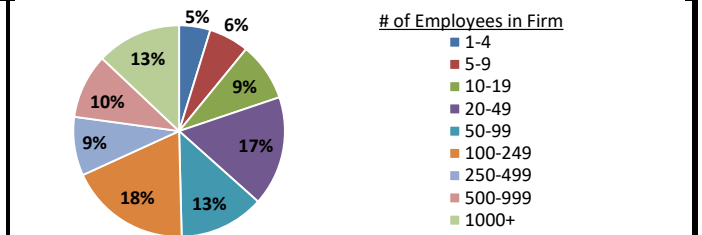
Historical Unemployment Rates



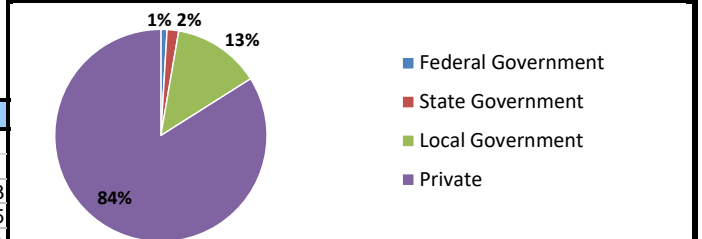
Projected Fastest Growing Industries in WDA (% growth 2014-2024)



Employment by Size Class (2nd Quarter 2017)



Employment by Ownership (2nd Quarter 2017)



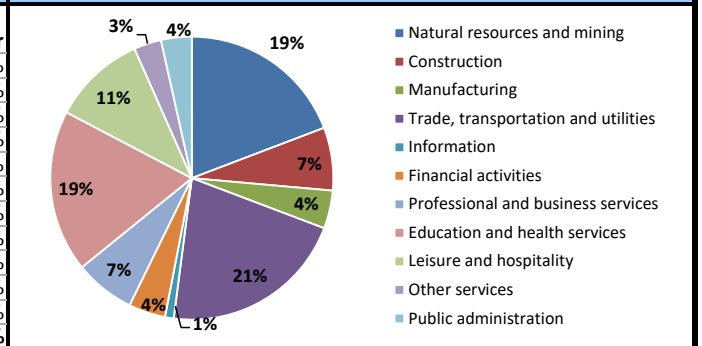
Average Weekly Wage (2nd Quarter 2017)

	Q2 2017	Q1 2017	Q2 2016	Change	
				Quarter	Year
WDA	\$1,138	\$1,189	\$1,046	-\$51	\$93
Texas	\$1,026	\$1,124	\$1,000	-\$99	\$25
US	N/A	\$1,111	\$988	N/A	N/A

Employment by Industry (2nd Quarter 2017, Percent Change)

Industry	Employment	% of total	% Change	
			Quarter	Year
Natural resources and mining	40,707	19.2%	5.4%	15.8%
Construction	15,239	7.2%	6.4%	4.6%
Manufacturing	9,220	4.4%	4.8%	4.9%
Trade, transportation and utilities	45,099	21.3%	2.2%	0.9%
Information	2,118	1.0%	4.6%	13.8%
Financial activities	8,909	4.2%	1.9%	2.1%
Professional and business services	14,628	6.9%	2.4%	7.3%
Education and health services	39,287	18.5%	-0.8%	0.3%
Leisure and hospitality	22,604	10.7%	6.7%	3.6%
Other services	6,627	3.1%	3.6%	6.6%
Public administration	7,419	3.5%	-0.9%	0.2%
Total	211,857	100.0%	3.0%	4.9%

Employment by Industry (2nd Quarter 2017)

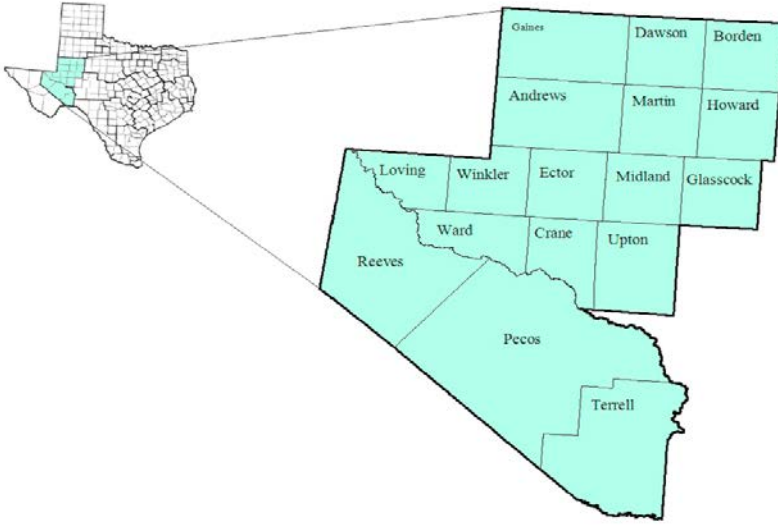


PERMIAN BASIN

PERMIAN BASIN													
	October-17				September-17				October-16				
Area	Area Type	Labor Force	Employment	Unemployment	Rate	Labor Force	Employment	Unemployment	Rate	Labor Force	Employment	Unemployment	Rate
Texas	State	13,392,285	12,922,084	470,201	3.5	13,498,742	12,954,820	543,922	4.0	13,338,725	12,725,859	612,866	4.6
Midland	MSA	86,248	84,162	2,086	2.4	87,508	85,055	2,453	2.8	86,381	82,682	3,699	4.3
Odessa	MSA	74,265	71,877	2,388	3.2	74,986	72,235	2,751	3.7	75,265	70,573	4,692	6.2
Permian Basin	WDA	220,481	214,077	6,404	2.9	222,675	215,242	7,433	3.3	221,981	210,371	11,610	5.2
Andrews	County	8,491	8,272	219	2.6	8,592	8,339	253	2.9	8,518	8,123	395	4.6
Borden	County	358	348	10	2.8	363	352	11	3.0	378	367	11	2.9
Crane	County	1,619	1,553	66	4.1	1,630	1,555	75	4.6	1,747	1,622	125	7.2
Dawson	County	4,622	4,446	176	3.8	4,561	4,356	205	4.5	4,622	4,387	235	5.1
Ector	County	74,265	71,877	2,388	3.2	74,986	72,235	2,751	3.7	75,265	70,573	4,692	6.2
Gaines	County	8,895	8,682	213	2.4	8,841	8,597	244	2.8	8,851	8,522	329	3.7
Glasscock	County	665	649	16	2.4	640	624	16	2.5	719	691	28	3.9
Howard	County	12,649	12,209	440	3.5	12,804	12,295	509	4.0	12,916	12,146	770	6.0
Loving	County	104	100	4	3.8	103	99	4	3.9	96	91	5	5.2
Martin	County	2,407	2,347	60	2.5	2,406	2,335	71	3.0	2,415	2,307	108	4.5
Midland	County	83,841	81,815	2,026	2.4	85,102	82,720	2,382	2.8	83,966	80,375	3,591	4.3
Pecos	County	6,125	5,910	215	3.5	6,179	5,930	249	4.0	6,390	5,985	405	6.3
Reeves	County	6,087	5,881	206	3.4	6,141	5,895	246	4.0	5,879	5,576	303	5.2
Terrell	County	387	375	12	3.1	388	373	15	3.9	419	402	17	4.1
Upton	County	1,521	1,474	47	3.1	1,495	1,443	52	3.5	1,550	1,470	80	5.2
Ward	County	5,464	5,279	185	3.4	5,452	5,247	205	3.8	5,321	5,029	292	5.5
Winkler	County	2,981	2,860	121	4.1	2,992	2,847	145	4.8	2,929	2,705	224	7.6
Big Spring	City	9,200	8,853	347	3.8	9,319	8,915	404	4.3	9,434	8,807	627	6.6
Midland	City	69,113	67,436	1,677	2.4	70,149	68,182	1,967	2.8	69,203	66,249	2,954	4.3
Odessa	City	57,120	55,351	1,769	3.1	57,676	55,633	2,043	3.5	57,656	54,347	3,309	5.7

Permian Basin Workforce Development Area

December 2017



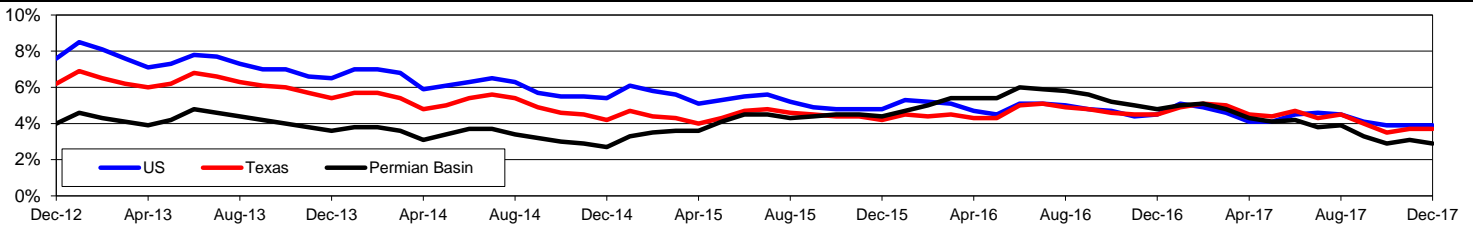
WDA Labor Force Statistics				
	Dec-17	Nov-17	Dec-16	OTY
CLF	222,692	221,973	221,099	1,593
Employed	216,127	215,192	210,396	5,731
Unemployed	6,565	6,781	10,703	-4,138
Rate	2.9%	3.1%	4.8%	-1.9%

Texas Labor Force Statistics				
	Dec-17	Nov-17	Dec-16	OTY
CLF	13,545,282	13,500,872	13,353,321	191,961
Employed	13,043,959	13,001,592	12,747,329	296,630
Unemployed	501,323	499,280	605,992	-104,669
Rate	3.7%	3.7%	4.5%	-0.8%

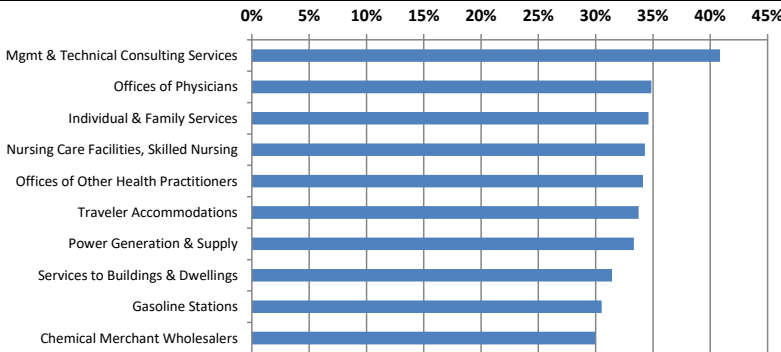
US Labor Force Statistics				
	Dec-17	Nov-17	Dec-16	OTY
CLF	159,880,000	160,466,000	158,968,000	912,000
Employed	153,602,000	154,180,000	151,798,000	1,804,000
Unemployed	6,278,000	6,286,000	7,170,000	-892,000
Rate	3.9%	3.9%	4.5%	-0.6%

Continued Claims for the Week of the 12th				
	Dec-17	Nov-17	Dec-16	OTY
WDA	808	817	1,948	-1,140
Texas	108,432	105,083	129,904	-21,472

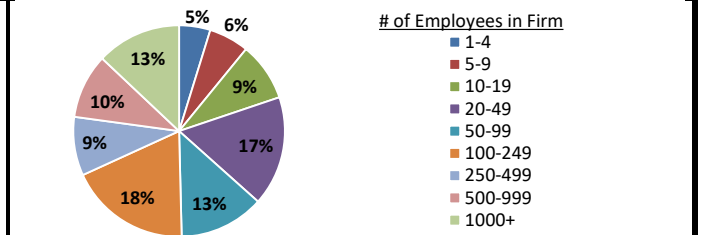
Historical Unemployment Rates



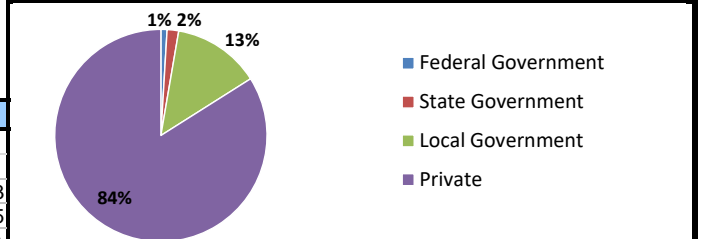
Projected Fastest Growing Industries in WDA (% growth 2014-2024)



Employment by Size Class (2nd Quarter 2017)



Employment by Ownership (2nd Quarter 2017)



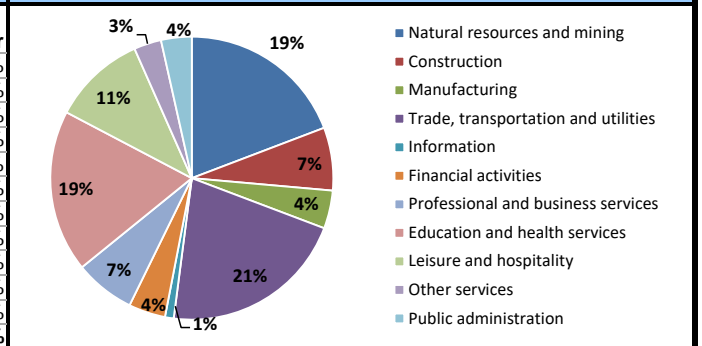
Average Weekly Wage (2nd Quarter 2017)

	Q2 2017	Q1 2017	Q2 2016	Change	
				Quarter	Year
WDA	\$1,138	\$1,189	\$1,046	-\$51	\$93
Texas	\$1,026	\$1,124	\$1,000	-\$99	\$25
US	N/A	\$1,111	\$988	N/A	N/A

Employment by Industry (2nd Quarter 2017, Percent Change)

Industry	Employment	% of total	% Change	
			Quarter	Year
Natural resources and mining	40,707	19.2%	5.4%	15.8%
Construction	15,239	7.2%	6.4%	4.6%
Manufacturing	9,220	4.4%	4.8%	4.9%
Trade, transportation and utilities	45,099	21.3%	2.2%	0.9%
Information	2,118	1.0%	4.6%	13.8%
Financial activities	8,909	4.2%	1.9%	2.1%
Professional and business services	14,628	6.9%	2.4%	7.3%
Education and health services	39,287	18.5%	-0.8%	0.3%
Leisure and hospitality	22,604	10.7%	6.7%	3.6%
Other services	6,627	3.1%	3.6%	6.6%
Public administration	7,419	3.5%	-0.9%	0.2%
Total	211,857	100.0%	3.0%	4.9%

Employment by Industry (2nd Quarter 2017)



PERMIAN BASIN

PERMIAN BASIN													
	December-17				November-17				December-16				
Area	Area Type	Labor Force	Employment	Unemployment	Rate	Labor Force	Employment	Unemployment	Rate	Labor Force	Employment	Unemployment	Rate
Texas	State	13,545,282	13,043,959	501,323	3.7	13,500,872	13,001,592	499,280	3.7	13,353,321	12,747,329	605,992	4.5
Midland	MSA	87,499	85,348	2,151	2.5	87,297	85,063	2,234	2.6	86,198	82,767	3,431	4.0
Odessa	MSA	74,809	72,369	2,440	3.3	74,592	72,079	2,513	3.4	74,904	70,672	4,232	5.6
Permian Basin	WDA	222,692	216,127	6,565	2.9	221,973	215,192	6,781	3.1	221,099	210,396	10,703	4.8
Andrews	County	8,661	8,442	219	2.5	8,590	8,358	232	2.7	8,377	8,012	365	4.4
Borden	County	364	352	12	3.3	362	352	10	2.8	377	366	11	2.9
Crane	County	1,628	1,559	69	4.2	1,614	1,549	65	4.0	1,723	1,604	119	6.9
Dawson	County	4,688	4,498	190	4.1	4,651	4,459	192	4.1	4,624	4,405	219	4.7
Ector	County	74,809	72,369	2,440	3.3	74,592	72,079	2,513	3.4	74,904	70,672	4,232	5.6
Gaines	County	9,013	8,787	226	2.5	8,831	8,596	235	2.7	8,772	8,455	317	3.6
Glasscock	County	642	627	15	2.3	635	619	16	2.5	692	669	23	3.3
Howard	County	12,688	12,246	442	3.5	12,698	12,235	463	3.6	12,865	12,157	708	5.5
Loving	County	96	92	4	4.2	100	96	4	4.0	101	96	5	5.0
Martin	County	2,418	2,358	60	2.5	2,403	2,339	64	2.7	2,401	2,294	107	4.5
Midland	County	85,081	82,990	2,091	2.5	84,894	82,724	2,170	2.6	83,797	80,473	3,324	4.0
Pecos	County	6,070	5,858	212	3.5	6,121	5,900	221	3.6	6,371	5,975	396	6.2
Reeves	County	6,085	5,878	207	3.4	6,042	5,835	207	3.4	5,894	5,617	277	4.7
Terrell	County	384	371	13	3.4	386	371	15	3.9	416	393	23	5.5
Upton	County	1,536	1,487	49	3.2	1,528	1,476	52	3.4	1,539	1,467	72	4.7
Ward	County	5,506	5,317	189	3.4	5,523	5,329	194	3.5	5,316	5,041	275	5.2
Winkler	County	3,023	2,896	127	4.2	3,003	2,875	128	4.3	2,930	2,700	230	7.8
Big Spring	City	9,232	8,880	352	3.8	9,240	8,872	368	4.0	9,403	8,815	588	6.3
Midland	City	70,118	68,405	1,713	2.4	69,974	68,186	1,788	2.6	69,072	66,330	2,742	4.0
Odessa	City	57,504	55,737	1,767	3.1	57,371	55,515	1,856	3.2	57,350	54,423	2,927	5.1