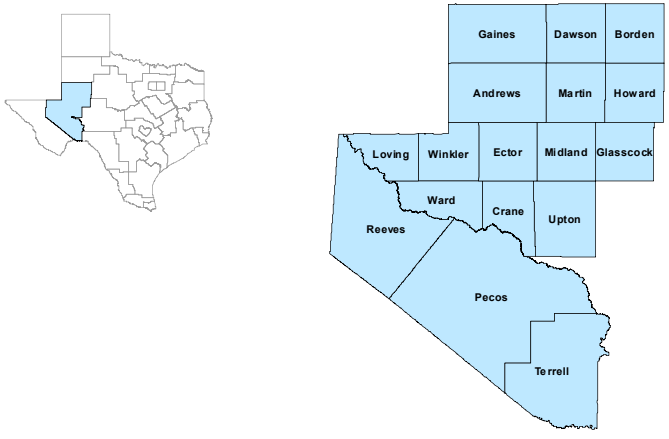


Permian Basin Workforce Development Area

May 2026



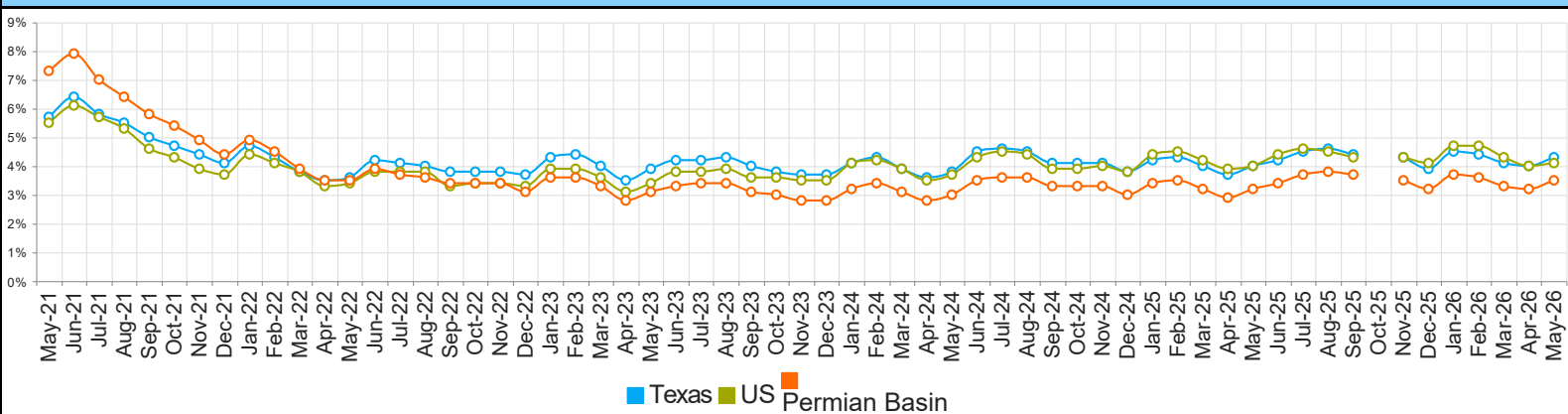
WDA Labor Force Statistics				
	May-26	Apr-26	May-25	Yearly Change
Civilian Labor Force	262,663	261,399	261,950	713
Employed	253,499	252,958	253,589	-90
Unemployed	9,164	8,441	8,361	803
Unemployment Rate	3.5%	3.2%	3.2%	0.3%

Texas Labor Force Statistics				
	May-26	Apr-26	May-25	Yearly Change
Civilian Labor Force	15,915,979	15,867,636	15,807,386	108,593
Employed	15,238,091	15,234,999	15,182,232	55,859
Unemployed	677,888	632,637	625,154	52,734
Unemployment Rate	4.3%	4.0%	4.0%	0.3%

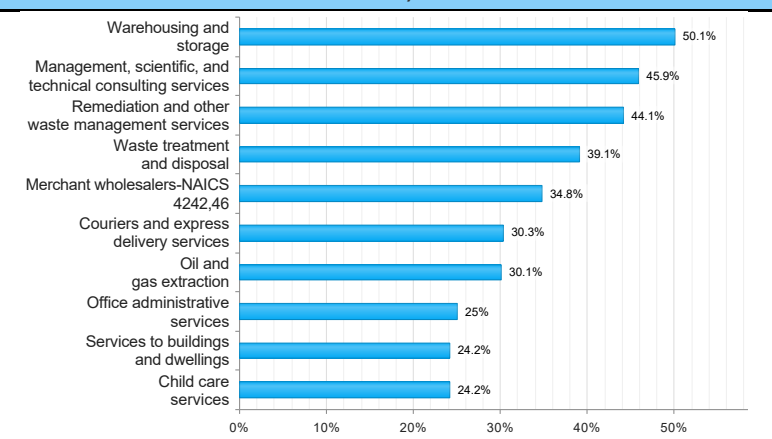
US Labor Force Statistics				
	May-26	Apr-26	May-25	Yearly Change
Civilian Labor Force	169,801,000	169,548,000	170,216,000	-415,000
Employed	162,897,000	162,781,000	163,401,000	-504,000
Unemployed	6,904,000	6,768,000	6,815,000	89,000
Unemployment Rate	4.1%	4.0%	4.0%	0.1%

Continued Claims for the Week of the 12th				
	May-26	Apr-26	May-25	Yearly Change
WDA	1,366	1,391	1,456	-90
Texas	119,803	119,008	133,158	-13,355

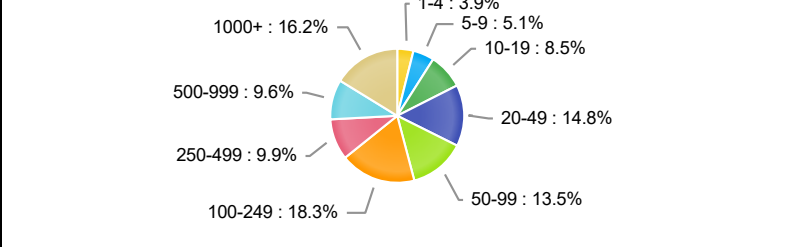
Historical Unemployment Rates



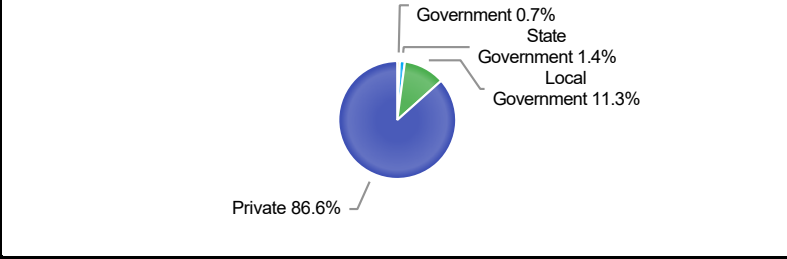
Projected Top Ten Fastest Growing Industries in WDA (% Growth 2022-2032)



Employment by Size Class (4th Quarter 2025)



Employment by Ownership (4th Quarter 2025)



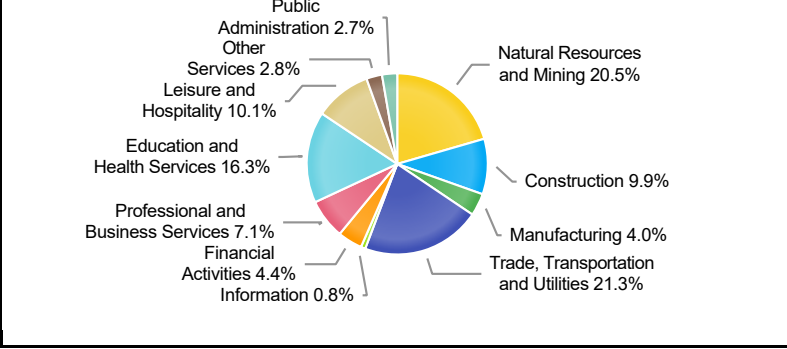
Average Weekly Wage (4th Quarter 2025)

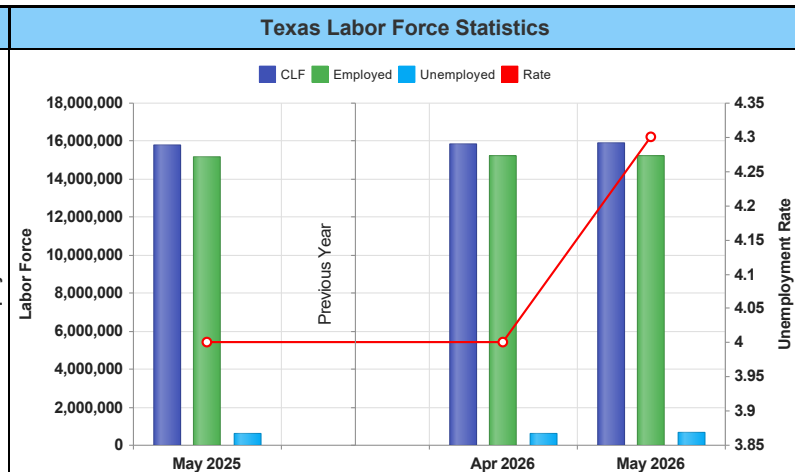
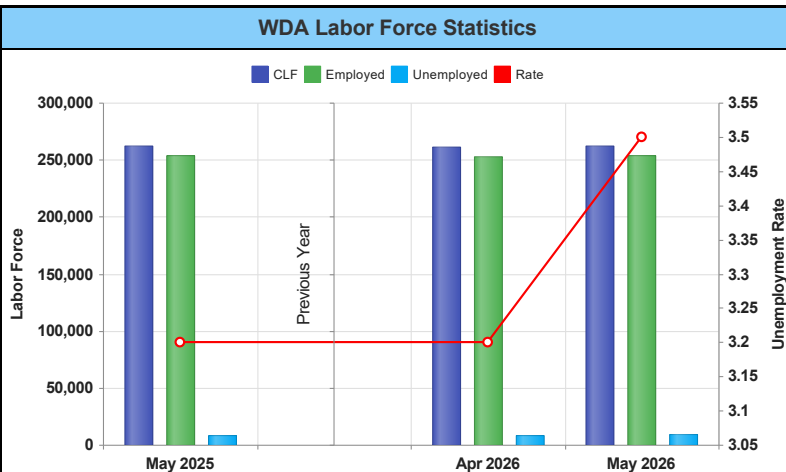
	Q4 2025	Q3 2025	Q4 2024	Quarterly Change	Yearly Change
WDA	\$1,699	\$1,576	\$1,663	\$123	\$36
Texas	\$1,549	\$1,444	\$1,488	\$105	\$61
US	\$1,569	\$1,459	\$1,506	\$110	\$63

Employment by Industry (4th Quarter 2025, Percent Change)

Industry	Employment	% of Total	% Quarterly Change	% Yearly Change
Natural Resources and Mining	54,444	20.5%	-2.3%	-4.9%
Construction	26,394	9.9%	4.1%	7.5%
Manufacturing	10,698	4.0%	-0.3%	1.0%
Trade, Transportation and Utilities	56,647	21.3%	0.8%	0.5%
Information	1,995	0.8%	3.4%	6.3%
Financial Activities	11,751	4.4%	-1.1%	-2.1%
Professional and Business Services	18,809	7.1%	-0.8%	-2.8%
Education and Health Services	43,438	16.3%	5.2%	0.1%
Leisure and Hospitality	26,769	10.1%	-0.9%	1.9%
Other Services	7,488	2.8%	-1.7%	-2.3%
Public Administration	7,244	2.7%	-2.7%	1.5%

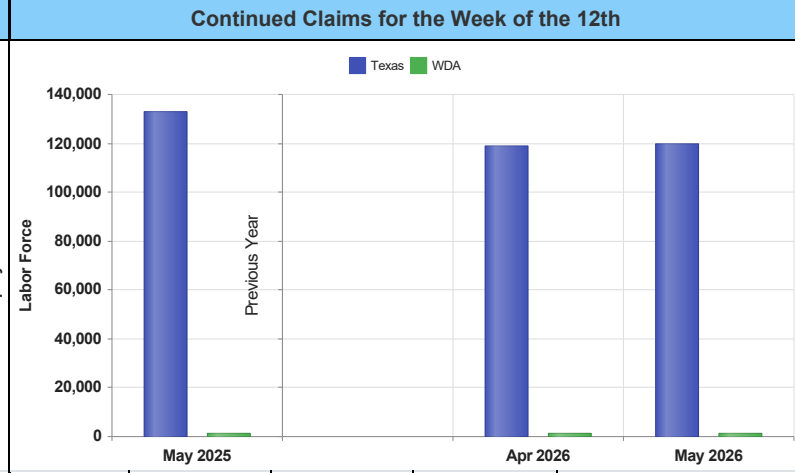
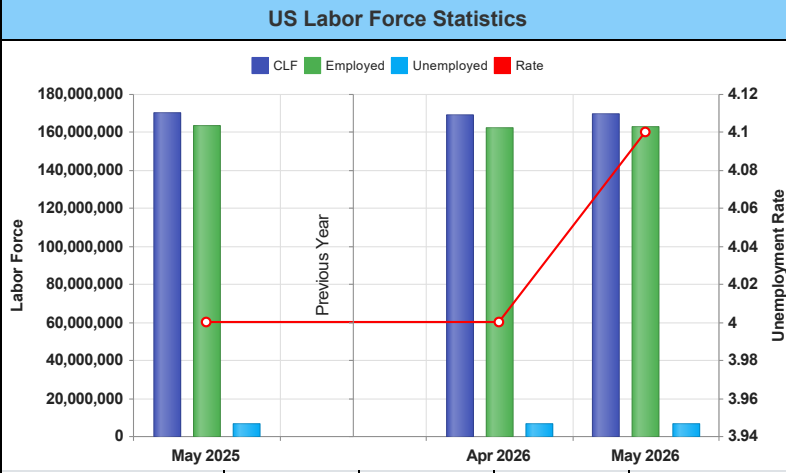
Employment by Industry (4th Quarter 2025)





	May-26	Apr-26	May-25	Yearly Change
Civilian Labor Force	262,663	261,399	261,950	713
Employed	253,499	252,958	253,589	-90
Unemployed	9,164	8,441	8,361	803
Unemployment Rate	3.5%	3.2%	3.2%	0.3%

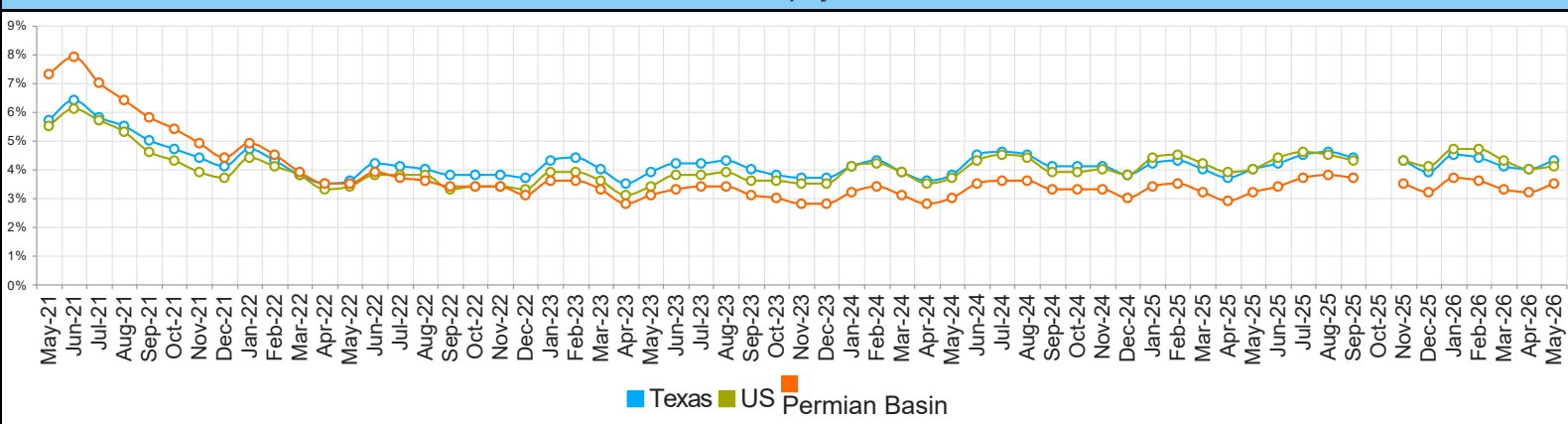
	May-26	Apr-26	May-25	Yearly Change
Civilian Labor Force	15,915,979	15,867,636	15,807,386	108,593
Employed	15,238,091	15,234,999	15,182,232	55,859
Unemployed	677,888	632,637	625,154	52,734
Unemployment Rate	4.3%	4.0%	4.0%	0.3%



	May-26	Apr-26	May-25	Yearly Change
Civilian Labor Force	169,801,000	169,548,000	170,216,000	-415,000
Employed	162,897,000	162,781,000	163,401,000	-504,000
Unemployed	6,904,000	6,768,000	6,815,000	89,000
Unemployment Rate	4.1%	4.0%	4.0%	0.1%

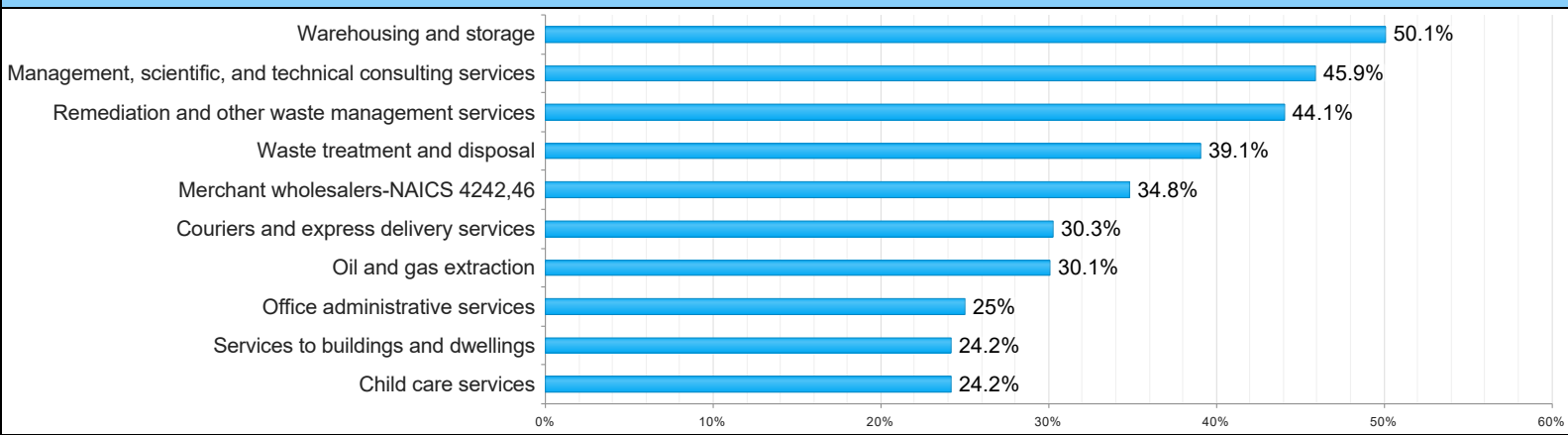
	May-26	Apr-26	May-25	Yearly Change
WDA	1,366	1,391	1,456	-90
Texas	119,803	119,008	133,158	-13,355

Historical Unemployment Rates



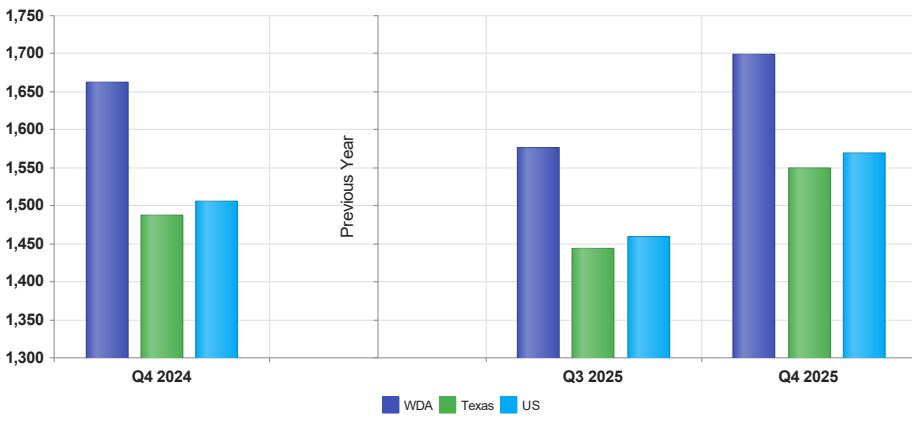
Months	WDA	Texas	US
May-26	3.5	4.3	4.1
Apr-26	3.2	4.0	4.0
Mar-26	3.3	4.1	4.3
Feb-26	3.6	4.4	4.7
Jan-26	3.7	4.5	4.7
Dec-25	3.2	3.9	4.1
Nov-25	3.5	4.3	4.3
Oct-25	N/A	N/A	N/A
Sep-25	3.7	4.4	4.3
Aug-25	3.8	4.6	4.5
Jul-25	3.7	4.5	4.6
Jun-25	3.4	4.2	4.4
May-25	3.2	4.0	4.0
Apr-25	2.9	3.7	3.9
Mar-25	3.2	4.0	4.2
Feb-25	3.5	4.3	4.5
Jan-25	3.4	4.2	4.4
Dec-24	3.0	3.8	3.8
Nov-24	3.3	4.1	4.0
Oct-24	3.3	4.1	3.9
Sep-24	3.3	4.1	3.9
Aug-24	3.6	4.5	4.4
Jul-24	3.6	4.6	4.5
Jun-24	3.5	4.5	4.3
May-24	3.0	3.8	3.7
Apr-24	2.8	3.6	3.5
Mar-24	3.1	3.9	3.9
Feb-24	3.4	4.3	4.2
Jan-24	3.2	4.1	4.1
Dec-23	2.8	3.7	3.5
Nov-23	2.8	3.7	3.5
Oct-23	3.0	3.8	3.6
Sep-23	3.1	4.0	3.6
Aug-23	3.4	4.3	3.9
Jul-23	3.4	4.2	3.8
Jun-23	3.3	4.2	3.8
May-23	3.1	3.9	3.4
Apr-23	2.8	3.5	3.1
Mar-23	3.3	4.0	3.6
Feb-23	3.6	4.4	3.9
Jan-23	3.6	4.3	3.9
Dec-22	3.1	3.7	3.3
Nov-22	3.4	3.8	3.4
Oct-22	3.4	3.8	3.4
Sep-22	3.4	3.8	3.3
Aug-22	3.6	4.0	3.8
Jul-22	3.7	4.1	3.8
Jun-22	3.9	4.2	3.8
May-22	3.5	3.6	3.4
Apr-22	3.5	3.5	3.3
Mar-22	3.9	3.8	3.8
Feb-22	4.5	4.3	4.1
Jan-22	4.9	4.7	4.4
Dec-21	4.4	4.1	3.7
Nov-21	4.9	4.4	3.9
Oct-21	5.4	4.7	4.3
Sep-21	5.8	5.0	4.6
Aug-21	6.4	5.5	5.3
Jul-21	7.0	5.8	5.7
Jun-21	7.9	6.4	6.1
May-21	7.3	5.7	5.5

Projected Top Ten Fastest Growing Industries in WDA (% Growth 2022-2032)



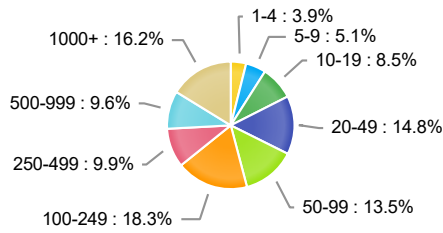
Industry Title	Percent Change
Warehousing and storage	50.1
Management, scientific, and technical consulting services	45.9
Remediation and other waste management services	44.1
Waste treatment and disposal	39.1
Merchant wholesalers-NAICS 4242,46	34.8
Couriers and express delivery services	30.3
Oil and gas extraction	30.1
Office administrative services	25
Services to buildings and dwellings	24.2
Child care services	24.2

Average Weekly Wage (4th Quarter 2025)



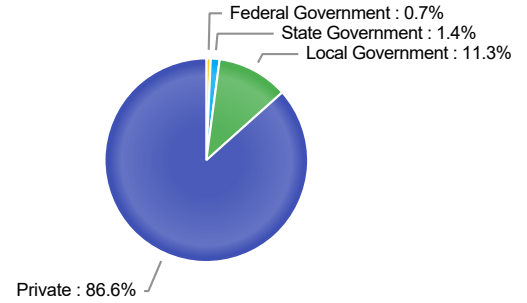
	Q4 2025	Q3 2025	Q4 2024	Quarterly Change	Yearly Change
WDA	\$1,699	\$1,576	\$1,663	\$123	\$36
Texas	\$1,549	\$1,444	\$1,488	\$105	\$61
US	\$1,569	\$1,459	\$1,506	\$110	\$63

Employment by Size Class (4th Quarter 2025)



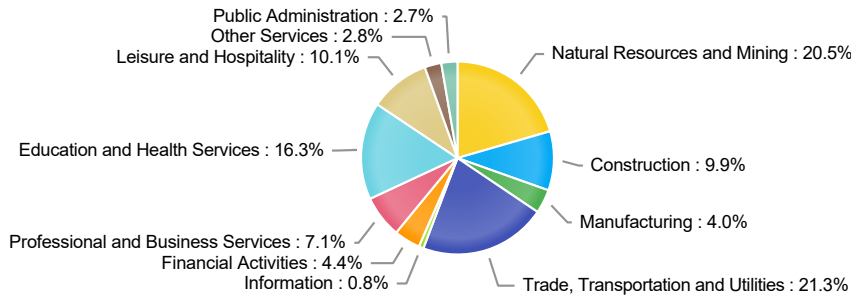
Number of Employees in Firm	Percentage
1-4	3.9%
5-9	5.1%
10-19	8.5%
20-49	14.8%
50-99	13.5%
100-249	18.3%
250-499	9.9%
500-999	9.6%
1000+	16.2%

Employment by Ownership (4th Quarter 2025)



Ownership	Percentage
Federal Government	0.7%
State Government	1.4%
Local Government	11.3%
Private	86.6%

Employment by Industry (4th Quarter 2025)



Industry	Q4 2025 Employment	% of Total	Q3 2025 Employment	% of Total	Q4 2024 Employment	% of Total	Quarterly Change	Yearly Change
Natural Resources and Mining	54,444	20.5%	55,706	21.1%	57,239	21.5%	-2.3%	-4.9%
Construction	26,394	9.9%	25,359	9.6%	24,554	9.2%	4.1%	7.5%
Manufacturing	10,698	4.0%	10,733	4.1%	10,594	4.0%	-0.3%	1.0%
Trade, Transportation and Utilities	56,647	21.3%	56,222	21.3%	56,359	21.2%	0.8%	0.5%
Information	1,995	0.8%	1,930	0.7%	1,877	0.7%	3.4%	6.3%
Financial Activities	11,751	4.4%	11,879	4.5%	12,007	4.5%	-1.1%	-2.1%
Professional and Business Services	18,809	7.1%	18,963	7.2%	19,351	7.3%	-0.8%	-2.8%
Education and Health Services	43,438	16.3%	41,298	15.6%	43,391	16.3%	5.2%	0.1%
Leisure and Hospitality	26,769	10.1%	27,020	10.2%	26,266	9.9%	-0.9%	1.9%
Other Services	7,488	2.8%	7,618	2.9%	7,668	2.9%	-1.7%	-2.3%
Public Administration	7,244	2.7%	7,443	2.8%	7,140	2.7%	-2.7%	1.5%