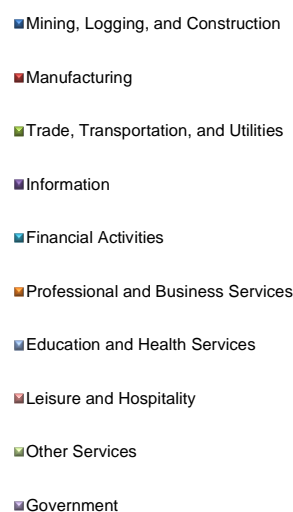
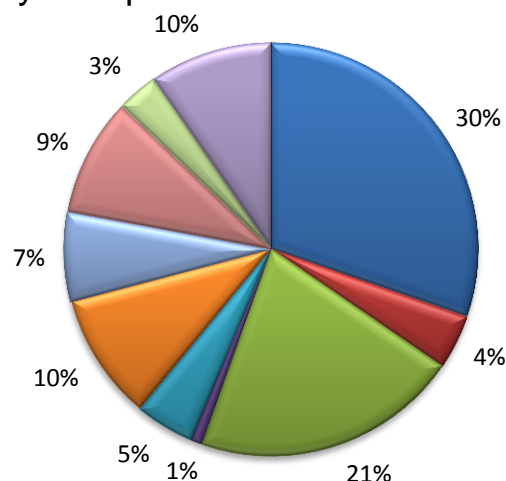
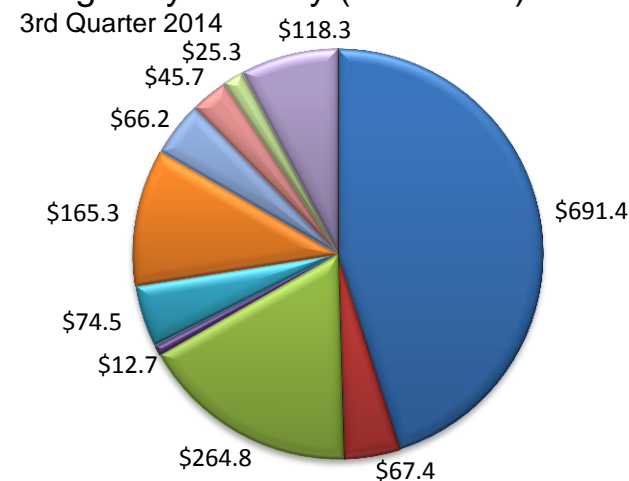


## Industry Composition



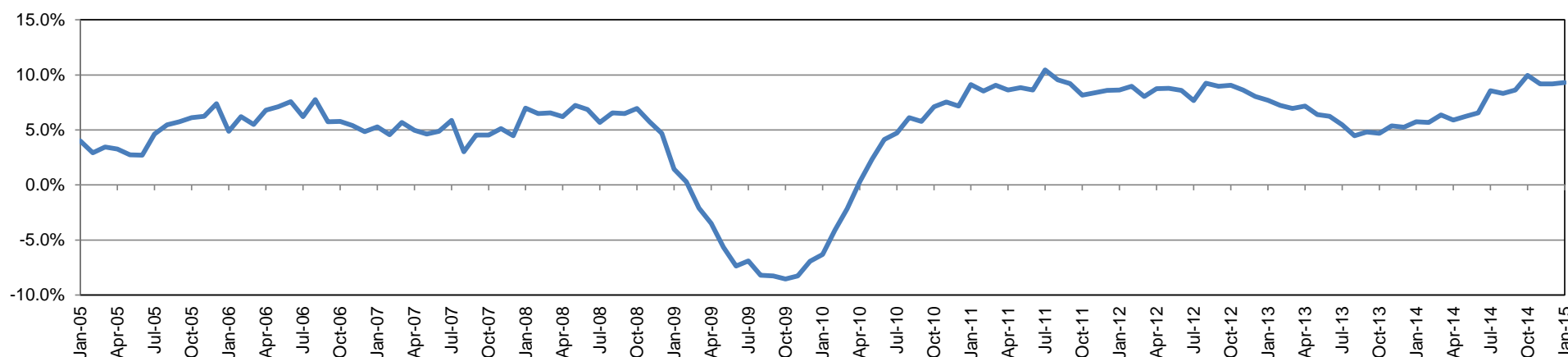
## Wages by Industry (in millions)



## Employment by Industry

	Jan-15	Dec-14	Jan-14	Monthly Change		Annual Change		Industry Size Class				
				Actual	%	Actual	%	Size Class	Employees per firm	Number of Firms	Employment in Size Class	% Total Employment
Total Nonfarm	98,700	98,800	90,300	-100	-0.1%	8,400	9.3%	9	1000+	6	9,028	9.5%
Mining, Logging, and Construction	29,900	29,800	26,300	100	0.3%	3,600	13.7%	8	500-999	11	7,631	8.0%
Manufacturing	4,200	4,100	3,800	100	2.4%	400	10.5%	7	250-499	26	8,836	9.3%
Trade, Transportation, and Utilities	20,600	21,000	18,200	-400	-1.9%	2,400	13.2%	6	100-249	139	20,529	21.6%
Information	900	900	900	0	0.0%	0	0.0%	5	50-99	208	14,172	14.9%
Financial Activities	4,600	4,600	4,400	0	0.0%	200	4.6%	4	20-49	539	16,486	17.4%
Professional and Business Services	9,800	9,800	9,500	0	0.0%	300	3.2%	3	10-19	576	7,835	8.3%
Education and Health Services	6,900	7,000	7,000	-100	-1.4%	-100	-1.4%	2	5-9	870	5,782	6.1%
Leisure and Hospitality	9,100	8,900	8,000	200	2.3%	1,100	13.8%	1	1-4	2,227	4,545	4.8%
Other Services	3,200	3,200	3,000	0	0.0%	200	6.7%	0	0	384	0	0.0%
Government	9,500	9,500	9,200	0	0.0%	300	3.3%	Total		4,986	94,844	100.0%

## Annual Growth Rate for Total Nonagricultural Employment



## Unemployment Information (all estimates in thousands)

	Midland MSA				Texas (Actual)				United States (Actual)			
	C.L.F.	Emp.	Unemp.	Rate	C.L.F.	Emp.	Unemp.	Rate	C.L.F.	Emp.	Unemp.	Rate
Jan-15	97.4	94.8	2.6	2.6	13,126.9	12,524.1	602.8	4.6	156,050.0	146,552.0	9,498.0	6.1
Dec-14	96.6	94.4	2.2	2.2	13,152.2	12,612.1	540.1	4.1	155,521.0	147,190.0	8,331.0	5.4
Jan-14	91.0	88.1	2.9	3.2	12,965.4	12,223.8	741.6	5.7	154,381.0	143,526.0	10,855.0	7.0

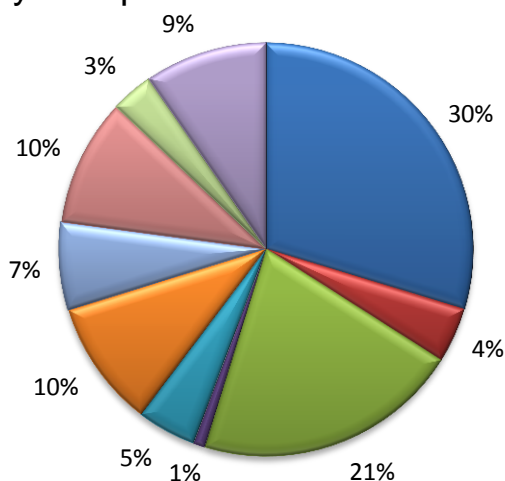
## Historical Unemployment Rates

Historical unemployment rate data prior to 2014 for the Metropolitan Statistical Areas (MSAs) is currently unavailable due to the MSA redefinition process. This process redefines the metropolitan geographies using Census and worker commuting patterns data and is conducted by the Whitehouse Office of Management and Budget. Updated historical MSA unemployment data will be available on March 27, 2015 when the Texas Workforce Commission releases state and sub-state estimates for February 2015.

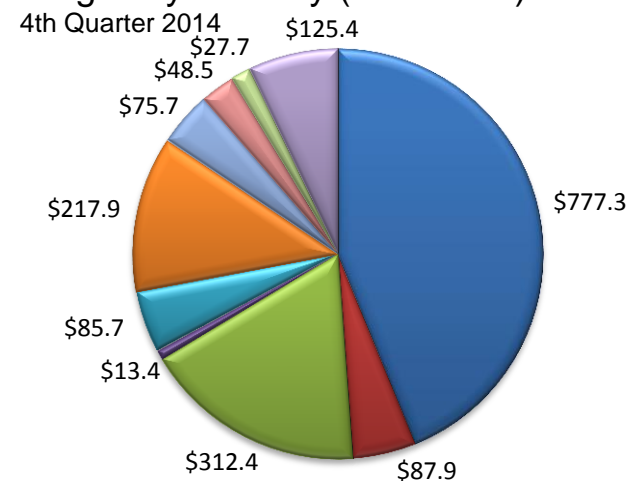
## 1-2015 -- MIDLAND CES

Area Title	NAICS Industry	Jan-15	Dec-14	Jan-14	Monthly Change	Monthly %	Yearly Change	Yearly %
Midland	Total Nonfarm	98,700	98,800	90,300	-100	-0.1%	8,400	9.3%
Midland	Total Private	89,200	89,300	81,100	-100	-0.1%	8,100	10.0%
Midland	Goods Producing	34,100	33,900	30,100	200	0.6%	4,000	13.3%
Midland	..Mining, Logging, and Construction	29,900	29,800	26,300	100	0.3%	3,600	13.7%
Midland	..Manufacturing	4,200	4,100	3,800	100	2.4%	400	10.5%
Midland	Service Providing	64,600	64,900	60,200	-300	-0.5%	4,400	7.3%
Midland	..Private Service Providing	55,100	55,400	51,000	-300	-0.5%	4,100	8.0%
Midland	..Trade, Transportation, and Utilities	20,600	21,000	18,200	-400	-1.9%	2,400	13.2%
Midland	...Wholesale Trade	6,200	6,200	5,500	0	0.0%	700	12.7%
Midland	...Retail Trade	9,800	10,200	8,600	-400	-3.9%	1,200	14.0%
Midland	...Transportation, Warehousing, and Utilities	4,600	4,600	4,100	0	0.0%	500	12.2%
Midland	..Information	900	900	900	0	0.0%	0	0.0%
Midland	..Financial Activities	4,600	4,600	4,400	0	0.0%	200	4.5%
Midland	..Professional and Business Services	9,800	9,800	9,500	0	0.0%	300	3.2%
Midland	..Educational and Health Services	6,900	7,000	7,000	-100	-1.4%	-100	-1.4%
Midland	..Leisure and Hospitality	9,100	8,900	8,000	200	2.2%	1,100	13.8%
Midland	..Other Services	3,200	3,200	3,000	0	0.0%	200	6.7%
Midland	Government	9,500	9,500	9,200	0	0.0%	300	3.3%
Midland	..Federal Government	500	500	500	0	0.0%	0	0.0%
Midland	..State Government	600	600	600	0	0.0%	0	0.0%
Midland	..Local Government	8,400	8,400	8,100	0	0.0%	300	3.7%

## Industry Composition



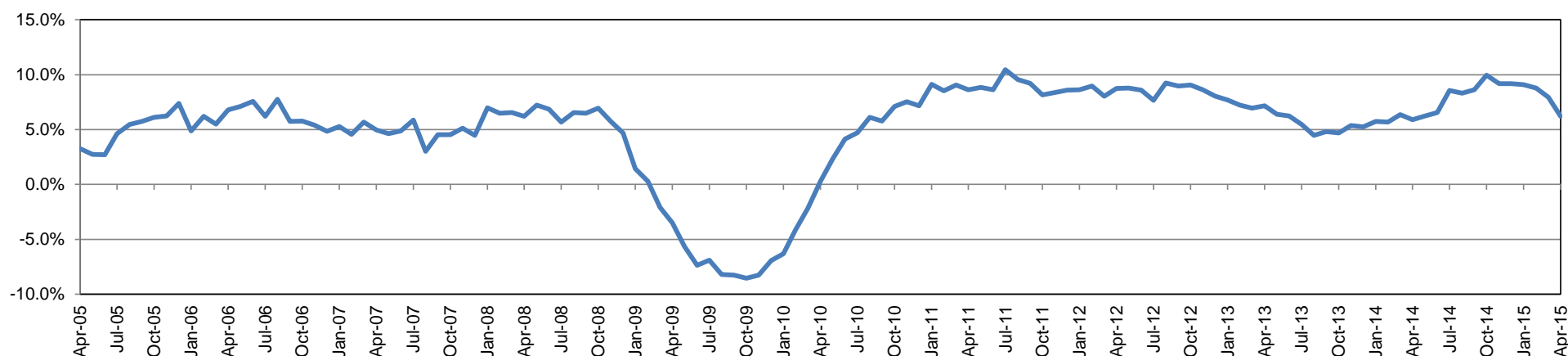
## Wages by Industry (in millions)



## Employment by Industry

	Apr-15	Mar-15	Apr-14	Monthly Change		Annual Change		Industry Size Class				
				Actual	%	Actual	%	Size Class	Employees per firm	Number of Firms	Employment in Size Class	% Total Employment
Total Nonfarm	99,100	99,100	93,300	0	0.0%	5,800	6.2%	9	1000+	6	9,436	9.8%
Mining, Logging, and Construction	29,400	29,800	27,700	-400	-1.3%	1,700	6.1%	8	500-999	12	8,345	8.6%
Manufacturing	4,300	4,300	3,900	0	0.0%	400	10.3%	7	250-499	27	8,957	9.3%
Trade, Transportation, and Utilities	20,600	20,500	18,500	100	0.5%	2,100	11.4%	6	100-249	131	19,691	20.4%
Information	900	900	900	0	0.0%	0	0.0%	5	50-99	214	14,718	15.2%
Financial Activities	4,600	4,600	4,300	0	0.0%	300	7.0%	4	20-49	546	16,944	17.5%
Professional and Business Services	9,800	9,900	9,800	-100	-1.0%	0	0.0%	3	10-19	598	8,204	8.5%
Education and Health Services	6,800	6,800	7,000	0	0.0%	-200	-2.9%	2	5-9	860	5,706	5.9%
Leisure and Hospitality	9,900	9,400	8,900	500	5.3%	1,000	11.2%	1	1-4	2,264	4,593	4.8%
Other Services	3,300	3,300	3,100	0	0.0%	200	6.5%	0	0	360	0	0.0%
Government	9,500	9,600	9,200	-100	-1.0%	300	3.3%	Total		5,018	96,594	100.0%

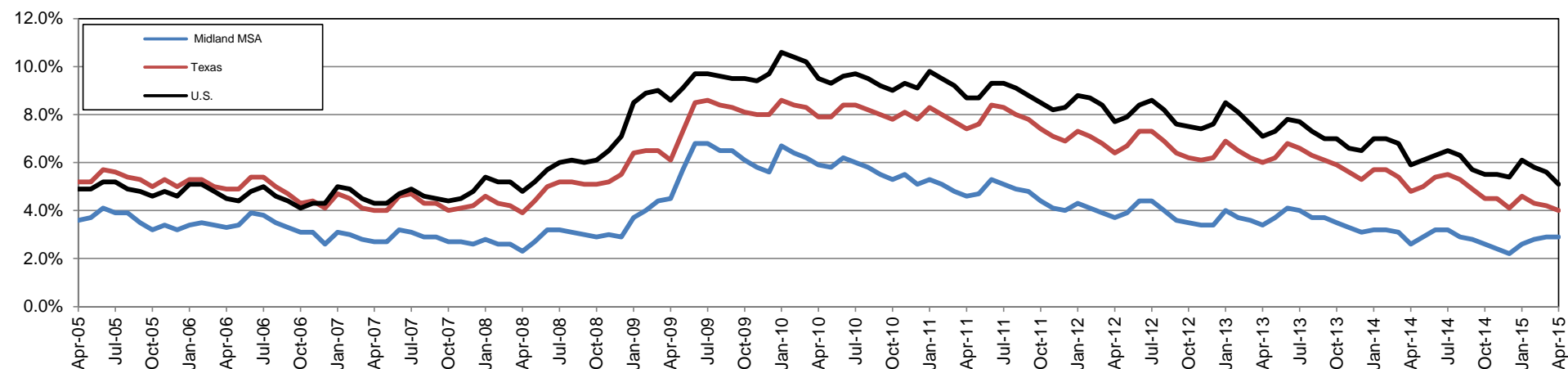
## Annual Growth Rate for Total Nonagricultural Employment



## Unemployment Information (all estimates in thousands)

	Midland MSA				Texas (Actual)				United States (Actual)			
	C.L.F.	Emp.	Unemp.	Rate	C.L.F.	Emp.	Unemp.	Rate	C.L.F.	Emp.	Unemp.	Rate
Apr-15	97.2	94.4	2.8	2.9	13,094.9	12,572.9	522.0	4.0	156,554.0	148,587.0	7,966.0	5.1
Mar-15	97.2	94.4	2.8	2.9	13,088.6	12,534.2	554.4	4.2	156,318.0	147,635.0	8,682.0	5.6
Apr-14	92.7	90.3	2.4	2.6	13,049.1	12,426.5	622.6	4.8	154,845.0	145,767.0	9,079.0	5.9

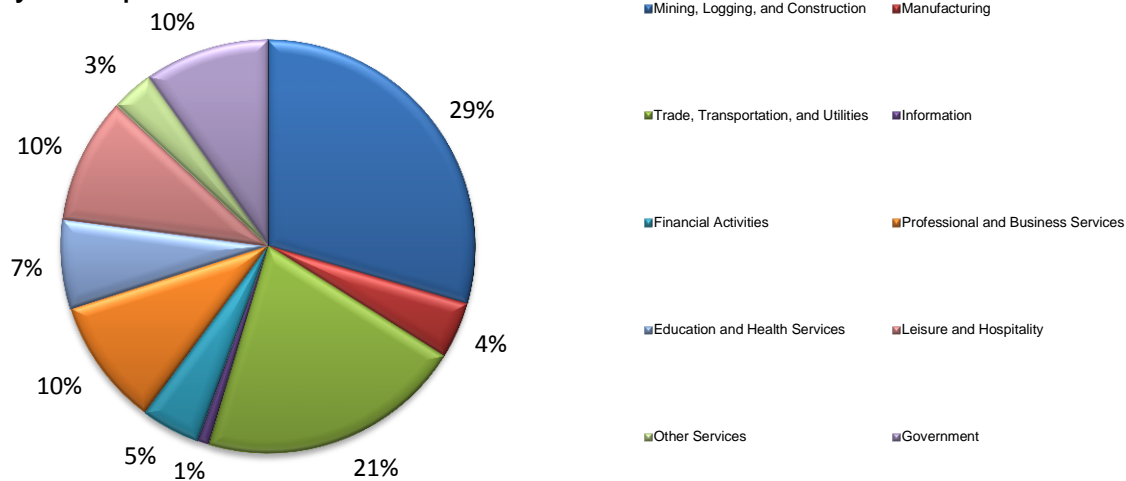
## Historical Unemployment Rates



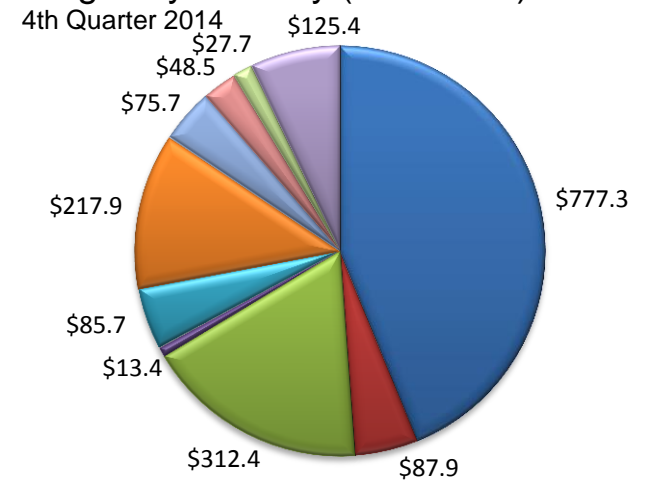
# 4-2015 -- MIDLAND CES

Area Title	NAICS Industry	Apr-15	Mar-15	Apr-14	Monthly Change	Monthly %	Yearly Change	Yearly %
Midland	Total Nonfarm	99,100	99,100	93,300	0	0.0%	5,800	6.2%
Midland	Total Private	89,600	89,500	84,100	100	0.1%	5,500	6.5%
Midland	Goods Producing	33,700	34,100	31,600	-400	-1.2%	2,100	6.6%
Midland	.Mining, Logging, and Construction	29,400	29,800	27,700	-400	-1.3%	1,700	6.1%
Midland	.Manufacturing	4,300	4,300	3,900	0	0.0%	400	10.3%
Midland	Service Providing	65,400	65,000	61,700	400	0.6%	3,700	6.0%
Midland	.Private Service Providing	55,900	55,400	52,500	500	0.9%	3,400	6.5%
Midland	..Trade, Transportation, and Utilities	20,600	20,500	18,500	100	0.5%	2,100	11.4%
Midland	...Wholesale Trade	6,300	6,300	5,600	0	0.0%	700	12.5%
Midland	...Retail Trade	9,600	9,600	8,700	0	0.0%	900	10.3%
Midland	...Transportation, Warehousing, and Utilities	4,700	4,600	4,200	100	2.2%	500	11.9%
Midland	..Information	900	900	900	0	0.0%	0	0.0%
Midland	..Financial Activities	4,600	4,600	4,300	0	0.0%	300	7.0%
Midland	..Professional and Business Services	9,800	9,900	9,800	-100	-1.0%	0	0.0%
Midland	..Educational and Health Services	6,800	6,800	7,000	0	0.0%	-200	-2.9%
Midland	..Leisure and Hospitality	9,900	9,400	8,900	500	5.3%	1,000	11.2%
Midland	..Other Services	3,300	3,300	3,100	0	0.0%	200	6.5%
Midland	Government	9,500	9,600	9,200	-100	-1.0%	300	3.3%
Midland	.Federal Government	500	500	500	0	0.0%	0	0.0%
Midland	.State Government	600	600	600	0	0.0%	0	0.0%
Midland	.Local Government	8,400	8,500	8,100	-100	-1.2%	300	3.7%

## Industry Composition



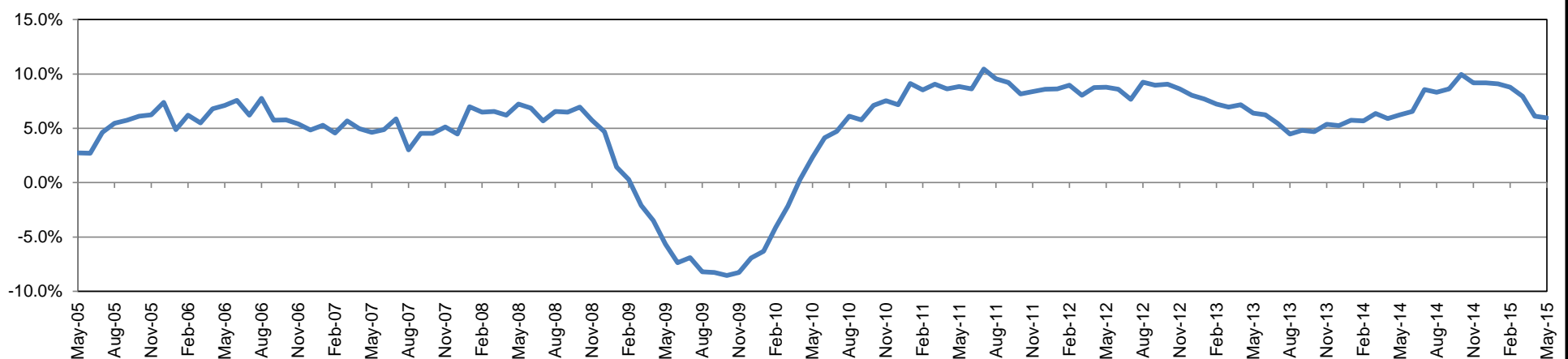
## Wages by Industry (in millions)



## Employment by Industry

	Monthly Change					Annual Change		Size Class	Employees per firm	Number of Firms	Employment in Size Class	% Total Employment
	May-15	Apr-15	May-14	Actual	%	Actual	%					
Total Nonfarm	99,400	99,000	93,800	400	0.4%	5,600	6.0%	9	1000+	6	9,436	9.8%
Mining, Logging, and Construction	29,300	29,400	27,900	-100	-0.3%	1,400	5.0%	8	500-999	12	8,345	8.6%
Manufacturing	4,400	4,300	4,000	100	2.3%	400	10.0%	7	250-499	27	8,957	9.3%
Trade, Transportation, and Utilities	20,600	20,500	18,500	100	0.5%	2,100	11.4%	6	100-249	131	19,691	20.4%
Information	900	900	900	0	0.0%	0	0.0%	5	50-99	214	14,718	15.2%
Financial Activities	4,600	4,600	4,300	0	0.0%	300	7.0%	4	20-49	546	16,944	17.5%
Professional and Business Services	9,900	9,800	9,700	100	1.0%	200	2.1%	3	10-19	598	8,204	8.5%
Education and Health Services	6,900	6,800	7,100	100	1.5%	-200	-2.8%	2	5-9	860	5,706	5.9%
Leisure and Hospitality	9,800	9,900	8,900	-100	-1.0%	900	10.1%	1	1-4	2,264	4,593	4.8%
Other Services	3,300	3,300	3,200	0	0.0%	100	3.1%	0	0	360	0	0.0%
Government	9,700	9,500	9,300	200	2.1%	400	4.3%	Total		5,018	96,594	100.0%

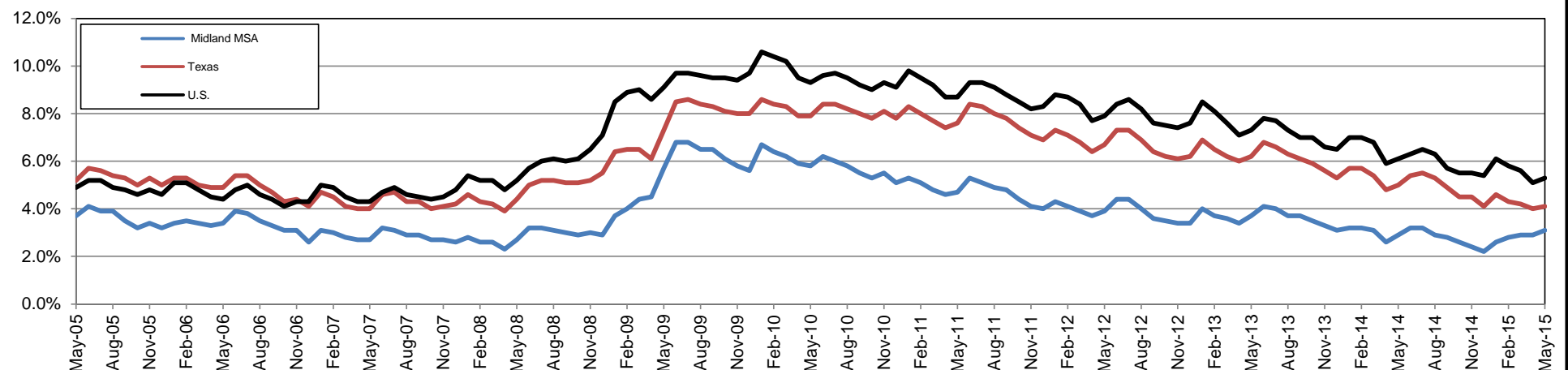
## Annual Growth Rate for Total Nonagricultural Employment



## Unemployment Information (all estimates in thousands)

	Midland MSA				Texas (Actual)				United States (Actual)			
	C.L.F.	Emp.	Unemp.	Rate	C.L.F.	Emp.	Unemp.	Rate	C.L.F.	Emp.	Unemp.	Rate
May-15	97.0	94.0	3.0	3.1	13,114.0	12,575.3	538.7	4.1	157,719.0	149,349.0	8,370.0	5.3
Apr-15	97.1	94.3	2.8	2.9	13,094.5	12,573.1	521.4	4.0	156,554.0	148,587.0	7,966.0	5.1
May-14	93.0	90.3	2.7	2.9	13,094.8	12,436.9	657.9	5.0	155,841.0	146,398.0	9,443.0	6.1

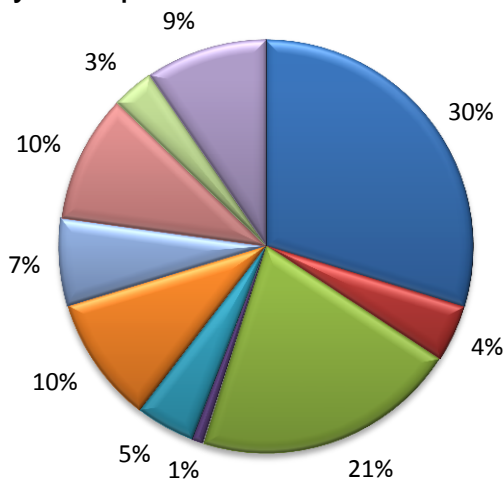
## Historical Unemployment Rates



**5-2015 -- Midland CES**

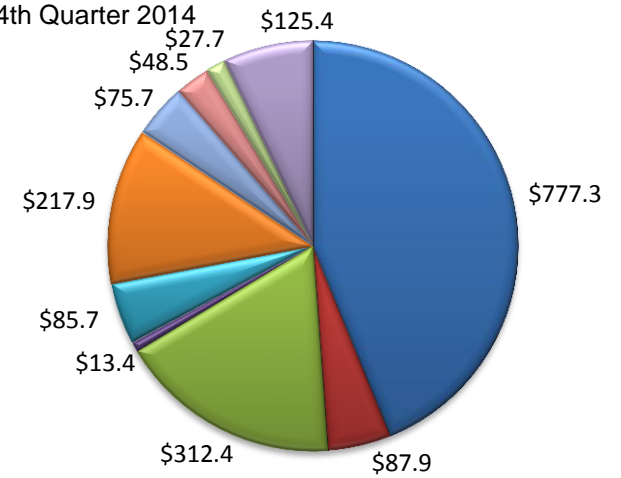
<b>Area Title</b>	<b>NAICS Industry</b>	<b>May-15</b>	<b>Apr-15</b>	<b>May-14</b>	<b>Monthly Change</b>	<b>Monthly %</b>	<b>Yearly Change</b>	<b>Yearly %</b>
Midland	Total Nonfarm	99,400	99,000	93,800	400	0.4%	5,600	6.0%
Midland	Total Private	89,700	89,500	84,500	200	0.2%	5,200	6.2%
Midland	Goods Producing	33,700	33,700	31,900	0	0.0%	1,800	5.6%
Midland	..Mining, Logging, and Construction	29,300	29,400	27,900	-100	-0.3%	1,400	5.0%
Midland	..Manufacturing	4,400	4,300	4,000	100	2.3%	400	10.0%
Midland	Service Providing	65,700	65,300	61,900	400	0.6%	3,800	6.1%
Midland	..Private Service Providing	56,000	55,800	52,600	200	0.4%	3,400	6.5%
Midland	..Trade, Transportation, and Utilities	20,600	20,500	18,500	100	0.5%	2,100	11.4%
Midland	...Wholesale Trade	6,300	6,300	5,700	0	0.0%	600	10.5%
Midland	...Retail Trade	9,600	9,500	8,600	100	1.1%	1,000	11.6%
Midland	...Transportation, Warehousing, and Utilities	4,700	4,700	4,200	0	0.0%	500	11.9%
Midland	..Information	900	900	900	0	0.0%	0	0.0%
Midland	..Financial Activities	4,600	4,600	4,300	0	0.0%	300	7.0%
Midland	..Professional and Business Services	9,900	9,800	9,700	100	1.0%	200	2.1%
Midland	..Educational and Health Services	6,900	6,800	7,100	100	1.5%	-200	-2.8%
Midland	..Leisure and Hospitality	9,800	9,900	8,900	-100	-1.0%	900	10.1%
Midland	..Other Services	3,300	3,300	3,200	0	0.0%	100	3.1%
Midland	Government	9,700	9,500	9,300	200	2.1%	400	4.3%
Midland	..Federal Government	600	500	500	100	20.0%	100	20.0%
Midland	..State Government	600	600	600	0	0.0%	0	0.0%
Midland	..Local Government	8,500	8,400	8,200	100	1.2%	300	3.7%

## Industry Composition



## Wages by Industry (in millions)

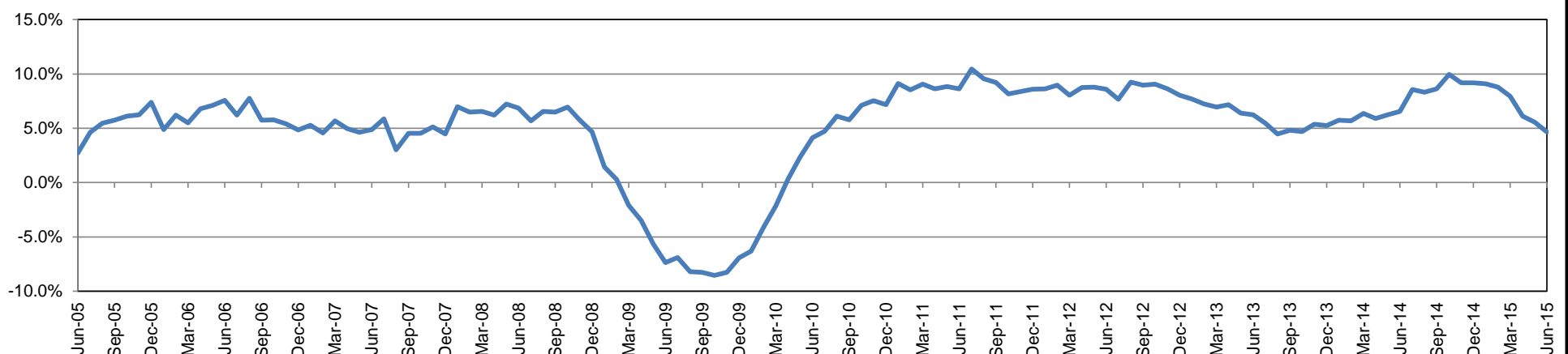
4th Quarter 2014



## Employment by Industry

	Monthly Change					Annual Change		Size Class	Employees per firm	Number of Firms	Employment in Size Class	% Total Employment
	Jun-15	May-15	Jun-14	Actual	%	Actual	%					
Total Nonfarm	98,900	99,000	94,500	-100	-0.1%	4,400	4.7%	9	1000+	6	9,436	9.8%
Mining, Logging, and Construction	29,400	29,200	28,400	200	0.7%	1,000	3.5%	8	500-999	12	8,345	8.6%
Manufacturing	4,400	4,400	4,000	0	0.0%	400	10.0%	7	250-499	27	8,957	9.3%
Trade, Transportation, and Utilities	20,500	20,600	18,800	-100	-0.5%	1,700	9.0%	6	100-249	131	19,691	20.4%
Information	900	900	900	0	0.0%	0	0.0%	5	50-99	214	14,718	15.2%
Financial Activities	4,600	4,600	4,300	0	0.0%	300	7.0%	4	20-49	546	16,944	17.5%
Professional and Business Services	9,800	9,900	9,700	-100	-1.0%	100	1.0%	3	10-19	598	8,204	8.5%
Education and Health Services	6,700	6,800	6,900	-100	-1.5%	-200	-2.9%	2	5-9	860	5,706	5.9%
Leisure and Hospitality	9,900	9,600	9,300	300	3.1%	600	6.5%	1	1-4	2,264	4,593	4.8%
Other Services	3,300	3,300	3,200	0	0.0%	100	3.1%	0	0	360	0	0.0%
Government	9,400	9,700	9,000	-300	-3.1%	400	4.4%	Total		5,018	96,594	100.0%

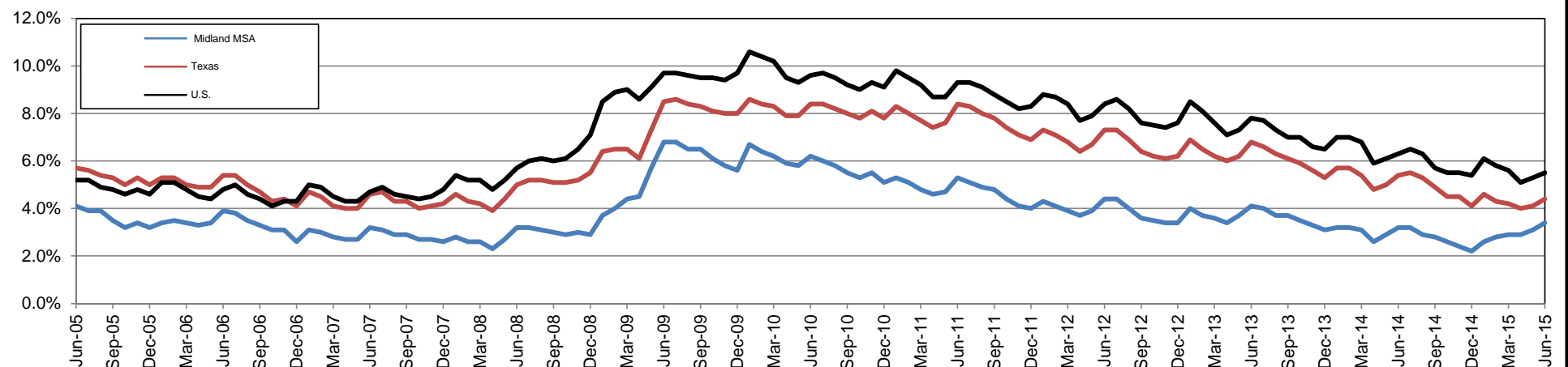
## Annual Growth Rate for Total Nonagricultural Employment



## Unemployment Information (all estimates in thousands)

	Midland MSA				Texas (Actual)				United States (Actual)			
	C.L.F.	Emp.	Unemp.	Rate	C.L.F.	Emp.	Unemp.	Rate	C.L.F.	Emp.	Unemp.	Rate
Jun-15	96.2	93.0	3.2	3.4	13,097.4	12,517.2	580.2	4.4	158,283.0	149,645.0	8,638.0	5.5
May-15	96.7	93.7	3.0	3.1	13,114.1	12,575.6	538.5	4.1	157,719.0	149,349.0	8,370.0	5.3
Jun-14	93.9	90.9	3.0	3.2	13,162.1	12,447.3	714.8	5.4	156,997.0	147,104.0	9,893.0	6.3

## Historical Unemployment Rates



## 6-2015 -- MIDLAND CES

Area Title	NAICS Industry	Jun-15	May-15	Jun-14	Monthly Change	Monthly %	Yearly Change	Yearly %
Midland	Total Nonfarm	98,900	99,000	94,500	-100	-0.1%	4,400	4.7%
Midland	Total Private	89,500	89,300	85,500	200	0.2%	4,000	4.7%
Midland	Goods Producing	33,800	33,600	32,400	200	0.6%	1,400	4.3%
Midland	.Mining, Logging, and Construction	29,400	29,200	28,400	200	0.7%	1,000	3.5%
Midland	.Manufacturing	4,400	4,400	4,000	0	0.0%	400	10.0%
Midland	Service Providing	65,100	65,400	62,100	-300	-0.5%	3,000	4.8%
Midland	.Private Service Providing	55,700	55,700	53,100	0	0.0%	2,600	4.9%
Midland	..Trade, Transportation, and Utilities	20,500	20,600	18,800	-100	-0.5%	1,700	9.0%
Midland	...Wholesale Trade	6,300	6,300	5,800	0	0.0%	500	8.6%
Midland	...Retail Trade	9,400	9,600	8,700	-200	-2.1%	700	8.0%
Midland	...Transportation, Warehousing, and Utilities	4,800	4,700	4,300	100	2.1%	500	11.6%
Midland	..Information	900	900	900	0	0.0%	0	0.0%
Midland	..Financial Activities	4,600	4,600	4,300	0	0.0%	300	7.0%
Midland	..Professional and Business Services	9,800	9,900	9,700	-100	-1.0%	100	1.0%
Midland	..Educational and Health Services	6,700	6,800	6,900	-100	-1.5%	-200	-2.9%
Midland	..Leisure and Hospitality	9,900	9,600	9,300	300	3.1%	600	6.5%
Midland	..Other Services	3,300	3,300	3,200	0	0.0%	100	3.1%
Midland	Government	9,400	9,700	9,000	-300	-3.1%	400	4.4%
Midland	.Federal Government	600	600	500	0	0.0%	100	20.0%
Midland	.State Government	600	600	600	0	0.0%	0	0.0%
Midland	.Local Government	8,200	8,500	7,900	-300	-3.5%	300	3.8%