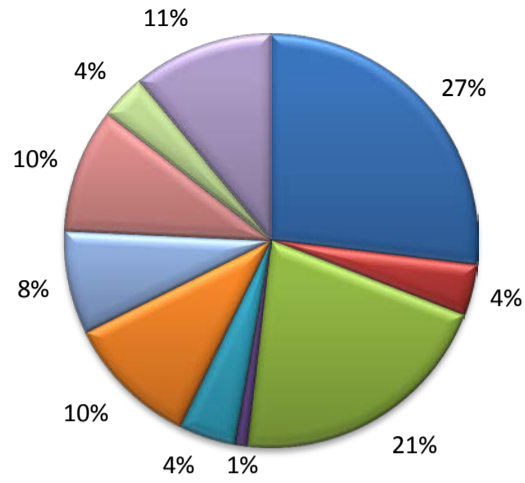


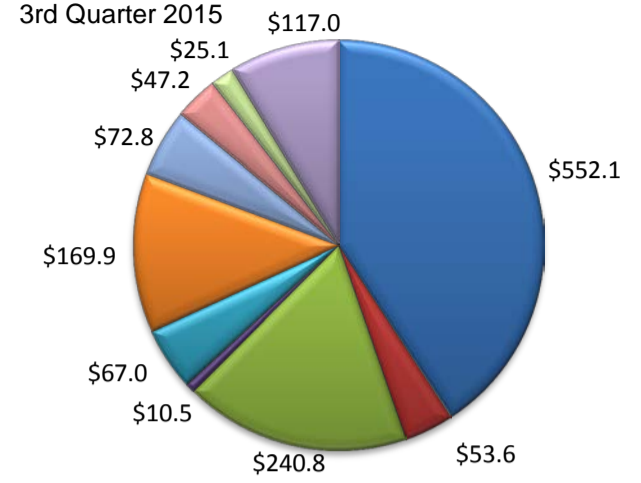
(Martin, Midland)

Industry Composition



- Mining, Logging, and Construction
- Manufacturing
- Trade, Transportation, and Utilities
- Information
- Financial Activities
- Professional and Business Services
- Education and Health Services
- Leisure and Hospitality
- Other Services
- Government

Wages by Industry (in millions)



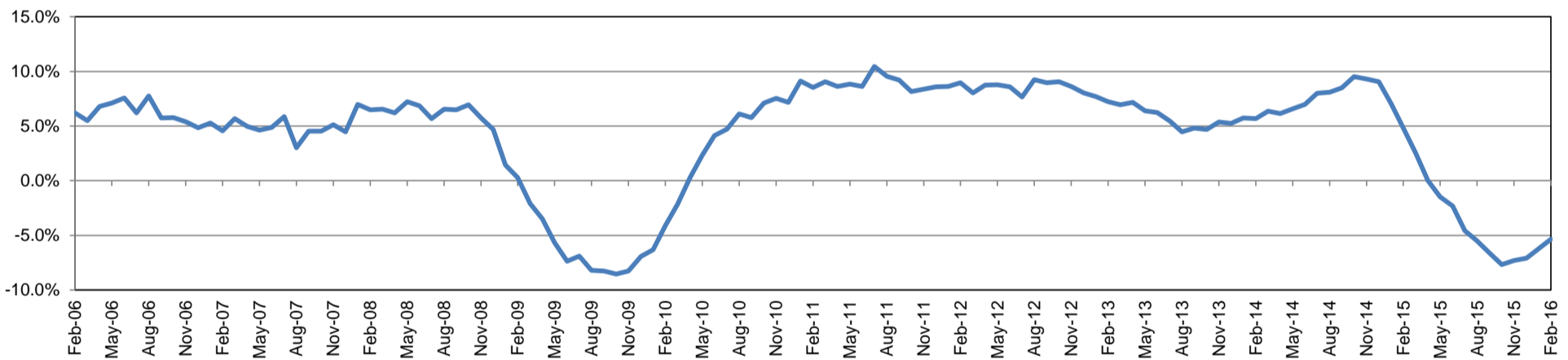
Employment by Industry

| | Feb-16 | Jan-16 | Feb-15 | Monthly Change | | Annual Change | |
|--------------------------------------|--------|--------|--------|----------------|-------|---------------|--------|
| | | | | Actual | % | Actual | % |
| Total Nonfarm | 90,300 | 90,700 | 95,400 | -400 | -0.4% | -5,100 | -5.4% |
| Mining, Logging, and Construction | 24,300 | 25,100 | 27,500 | -800 | -3.2% | -3,200 | -11.6% |
| Manufacturing | 3,600 | 3,600 | 3,900 | 0 | 0.0% | -300 | -7.7% |
| Trade, Transportation, and Utilities | 18,900 | 18,800 | 19,900 | 100 | 0.5% | -1,000 | -5.0% |
| Information | 900 | 900 | 900 | 0 | 0.0% | 0 | 0.0% |
| Financial Activities | 4,000 | 4,000 | 4,400 | 0 | 0.0% | -400 | -9.1% |
| Professional and Business Services | 9,400 | 9,400 | 10,100 | 0 | 0.0% | -700 | -6.9% |
| Education and Health Services | 7,300 | 7,200 | 7,200 | 100 | 1.4% | 100 | 1.4% |
| Leisure and Hospitality | 8,800 | 8,800 | 8,600 | 0 | 0.0% | 200 | 2.3% |
| Other Services | 3,200 | 3,200 | 3,300 | 0 | 0.0% | -100 | -3.0% |
| Government | 9,900 | 9,700 | 9,600 | 200 | 2.1% | 300 | 3.1% |

Industry Size Class September 2015

| Size Class | Employees per firm | Number of Firms | Employment in Size Class | % Total Employment |
|------------|--------------------|-----------------|--------------------------|--------------------|
| 9 | 1000+ | 2 | 4,978 | 5.6% |
| 8 | 500-999 | 13 | 9,929 | 11.2% |
| 7 | 250-499 | 22 | 7,819 | 8.8% |
| 6 | 100-249 | 112 | 16,999 | 19.2% |
| 5 | 50-99 | 205 | 14,160 | 16.0% |
| 4 | 20-49 | 537 | 16,291 | 18.4% |
| 3 | 10-19 | 596 | 8,192 | 9.2% |
| 2 | 5-9 | 854 | 5,687 | 6.4% |
| 1 | 1-4 | 2,238 | 4,630 | 5.2% |
| 0 | 0 | 469 | 0 | 0.0% |
| Total | | 5,048 | 88,685 | 100.0% |

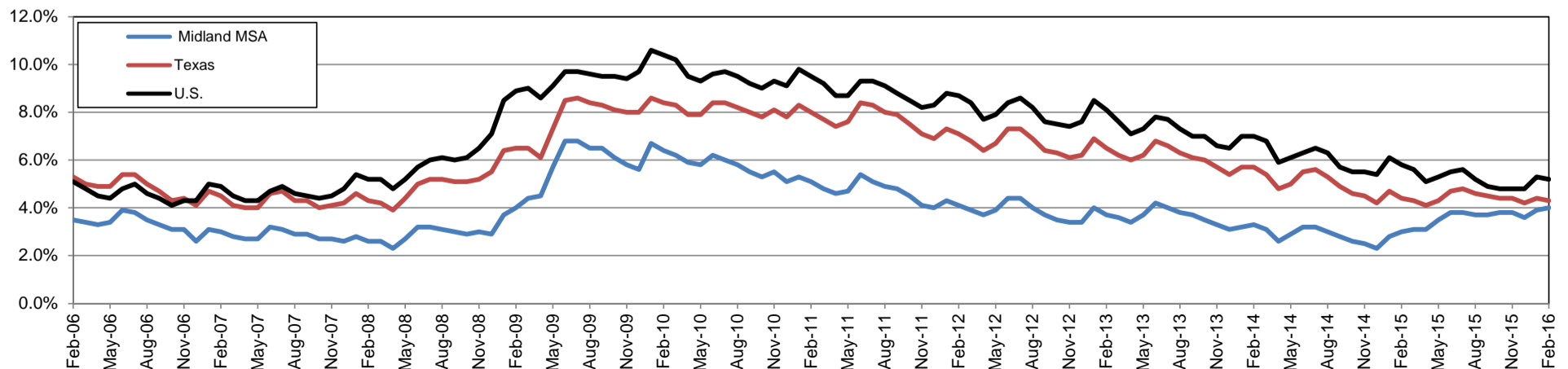
Annual Growth Rate for Total Nonagricultural Employment



Unemployment Information (all estimates in thousands)

| | Midland MSA | | | | Texas (Actual) | | | | United States (Actual) | | | |
|--------|-------------|------|--------|------|----------------|----------|--------|------|------------------------|-----------|---------|------|
| | C.L.F. | Emp. | Unemp. | Rate | C.L.F. | Emp. | Unemp. | Rate | C.L.F. | Emp. | Unemp. | Rate |
| Feb-16 | 89.9 | 86.4 | 3.6 | 4.0 | 13,221.7 | 12,654.9 | 566.8 | 4.3 | 158,279.0 | 150,060.0 | 8,219.0 | 5.2 |
| Jan-16 | 89.8 | 86.3 | 3.5 | 3.9 | 13,113.5 | 12,531.9 | 581.5 | 4.4 | 157,347.0 | 149,037.0 | 8,309.0 | 5.3 |
| Feb-15 | 93.2 | 90.5 | 2.8 | 3.0 | 13,001.4 | 12,423.2 | 578.2 | 4.4 | 156,213.0 | 147,118.0 | 9,095.0 | 5.8 |

Historical Unemployment Rates

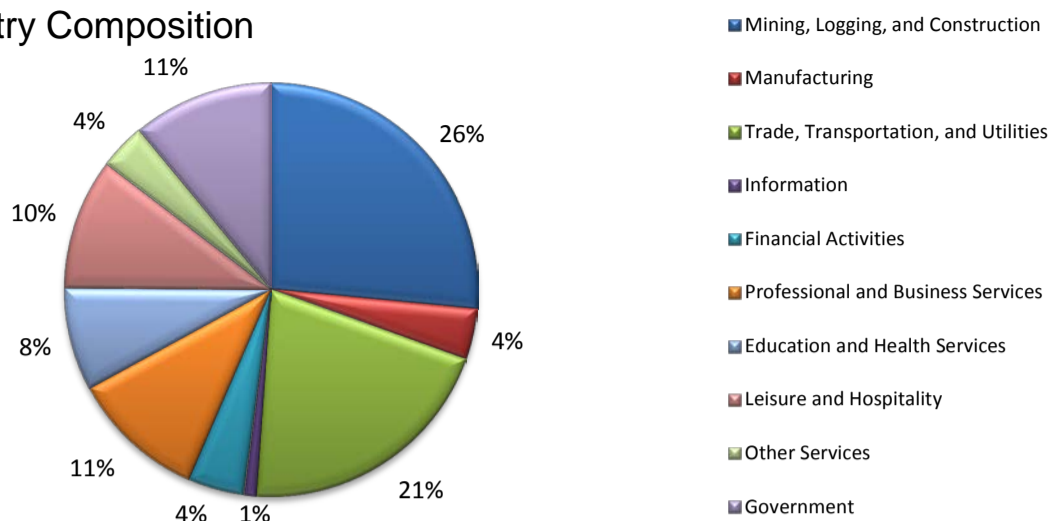


MIDLAND CES

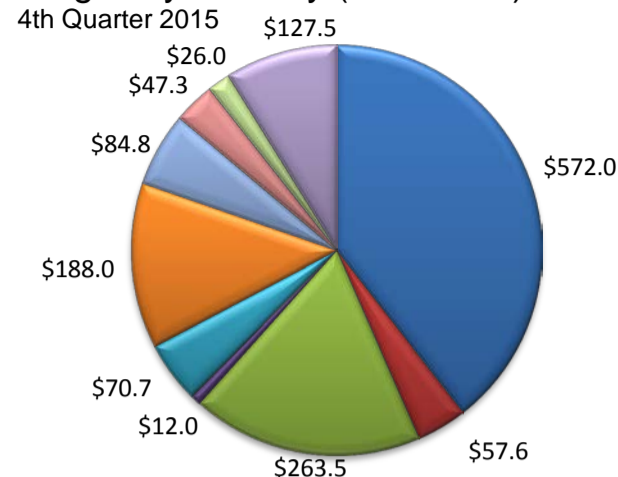
| Area Title | NAICS Industry | Feb-16 | Jan-16 | Feb-15 | Monthly Change | Monthly % | Yearly Change | Yearly % |
|------------|---|--------|--------|--------|----------------|-----------|---------------|----------|
| Midland | Total Nonfarm | 90,300 | 90,700 | 95,400 | -400 | -0.4% | -5,100 | -5.3% |
| Midland | Total Private | 80,400 | 81,000 | 85,800 | -600 | -0.7% | -5,400 | -6.3% |
| Midland | Goods Producing | 27,900 | 28,700 | 31,400 | -800 | -2.8% | -3,500 | -11.1% |
| Midland | .Mining, Logging, and Construction | 24,300 | 25,100 | 27,500 | -800 | -3.2% | -3,200 | -11.6% |
| Midland | .Manufacturing | 3,600 | 3,600 | 3,900 | 0 | 0.0% | -300 | -7.7% |
| Midland | Service Providing | 62,400 | 62,000 | 64,000 | 400 | 0.6% | -1,600 | -2.5% |
| Midland | .Private Service Providing | 52,500 | 52,300 | 54,400 | 200 | 0.4% | -1,900 | -3.5% |
| Midland | ..Trade, Transportation, and Utilities | 18,900 | 18,800 | 19,900 | 100 | 0.5% | -1,000 | -5.0% |
| Midland | ...Wholesale Trade | 5,500 | 5,500 | 6,300 | 0 | 0.0% | -800 | -12.7% |
| Midland | ...Retail Trade | 9,400 | 9,200 | 9,200 | 200 | 2.2% | 200 | 2.2% |
| Midland | ...Transportation, Warehousing, and Utilities | 4,000 | 4,100 | 4,400 | -100 | -2.4% | -400 | -9.1% |
| Midland | ..Information | 900 | 900 | 900 | 0 | 0.0% | 0 | 0.0% |
| Midland | ..Financial Activities | 4,000 | 4,000 | 4,400 | 0 | 0.0% | -400 | -9.1% |
| Midland | ..Professional and Business Services | 9,400 | 9,400 | 10,100 | 0 | 0.0% | -700 | -6.9% |
| Midland | ..Educational and Health Services | 7,300 | 7,200 | 7,200 | 100 | 1.4% | 100 | 1.4% |
| Midland | ..Leisure and Hospitality | 8,800 | 8,800 | 8,600 | 0 | 0.0% | 200 | 2.3% |
| Midland | ..Other Services | 3,200 | 3,200 | 3,300 | 0 | 0.0% | -100 | -3.0% |
| Midland | Government | 9,900 | 9,700 | 9,600 | 200 | 2.1% | 300 | 3.1% |
| Midland | .Federal Government | 600 | 500 | 600 | 100 | 20.0% | 0 | 0.0% |
| Midland | .State Government | 500 | 500 | 500 | 0 | 0.0% | 0 | 0.0% |
| Midland | .Local Government | 8,800 | 8,700 | 8,500 | 100 | 1.1% | 300 | 3.5% |

(Martin, Midland)

Industry Composition



Wages by Industry (in millions)



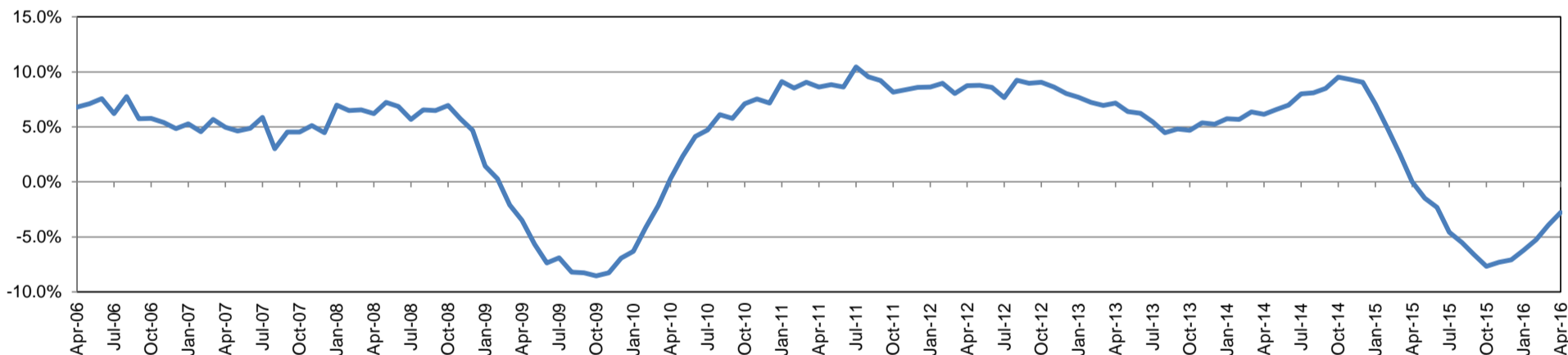
Employment by Industry

| | Apr-16 | Mar-16 | Apr-15 | Monthly Change | | Annual Change | |
|--------------------------------------|--------|--------|--------|----------------|-------|---------------|-------|
| | | | | Actual | % | Actual | % |
| Total Nonfarm | 90,900 | 90,400 | 93,500 | 500 | 0.6% | -2,600 | -2.8% |
| Mining, Logging, and Construction | 24,100 | 24,300 | 26,300 | -200 | -0.8% | -2,200 | -8.4% |
| Manufacturing | 3,600 | 3,600 | 3,700 | 0 | 0.0% | -100 | -2.7% |
| Trade, Transportation, and Utilities | 18,800 | 18,700 | 19,500 | 100 | 0.5% | -700 | -3.6% |
| Information | 900 | 900 | 900 | 0 | 0.0% | 0 | 0.0% |
| Financial Activities | 4,000 | 4,000 | 4,200 | 0 | 0.0% | -200 | -4.8% |
| Professional and Business Services | 9,600 | 9,500 | 9,800 | 100 | 1.1% | -200 | -2.0% |
| Education and Health Services | 7,300 | 7,300 | 7,300 | 0 | 0.0% | 0 | 0.0% |
| Leisure and Hospitality | 9,300 | 9,000 | 9,000 | 300 | 3.3% | 300 | 3.3% |
| Other Services | 3,300 | 3,200 | 3,200 | 100 | 3.1% | 100 | 3.1% |
| Government | 10,000 | 9,900 | 9,600 | 100 | 1.0% | 400 | 4.2% |

Industry Size Class

| Size Class | Employees per firm | Number of Firms | December 2015 | | |
|------------|--------------------|-----------------|--------------------------|--------------------|--------|
| | | | Employment in Size Class | % Total Employment | |
| 9 | 1000+ | 3 | 6,138 | 6.9% | |
| 8 | 500-999 | 12 | 9,112 | 10.3% | |
| 7 | 250-499 | 21 | 7,424 | 8.4% | |
| 6 | 100-249 | 113 | 17,028 | 19.2% | |
| 5 | 50-99 | 207 | 14,211 | 16.0% | |
| 4 | 20-49 | 541 | 16,275 | 18.4% | |
| 3 | 10-19 | 595 | 8,147 | 9.2% | |
| 2 | 5-9 | 842 | 5,560 | 6.3% | |
| 1 | 1-4 | 2,288 | 4,700 | 5.3% | |
| 0 | 0 | 420 | 0 | 0.0% | |
| Total | | | 5,042 | 88,595 | 100.0% |

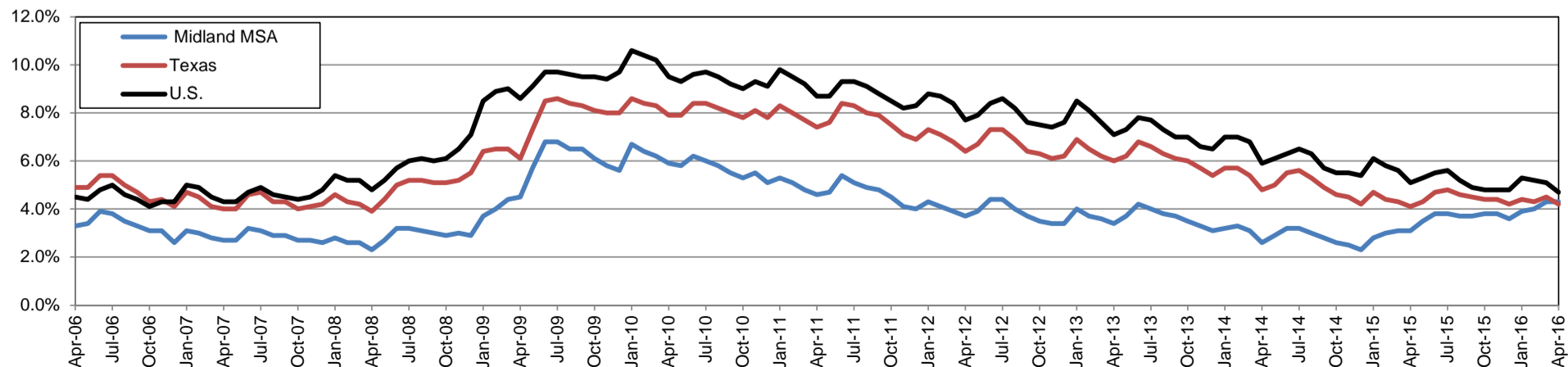
Annual Growth Rate for Total Nonagricultural Employment



Unemployment Information (all estimates in thousands)

| | Midland MSA | | | | Texas (Actual) | | | | United States (Actual) | | | |
|--------|-------------|------|--------|------|----------------|----------|--------|------|------------------------|-----------|---------|------|
| | C.L.F. | Emp. | Unemp. | Rate | C.L.F. | Emp. | Unemp. | Rate | C.L.F. | Emp. | Unemp. | Rate |
| Apr-16 | 90.2 | 86.3 | 3.9 | 4.3 | 13,257.5 | 12,696.8 | 560.7 | 4.2 | 158,488.0 | 151,075.0 | 7,413.0 | 4.7 |
| Mar-16 | 90.1 | 86.2 | 3.9 | 4.3 | 13,273.3 | 12,682.3 | 591.0 | 4.5 | 158,854.0 | 150,738.0 | 8,116.0 | 5.1 |
| Apr-15 | 92.1 | 89.3 | 2.8 | 3.1 | 13,054.1 | 12,524.8 | 529.4 | 4.1 | 156,554.0 | 148,587.0 | 7,966.0 | 5.1 |

Historical Unemployment Rates

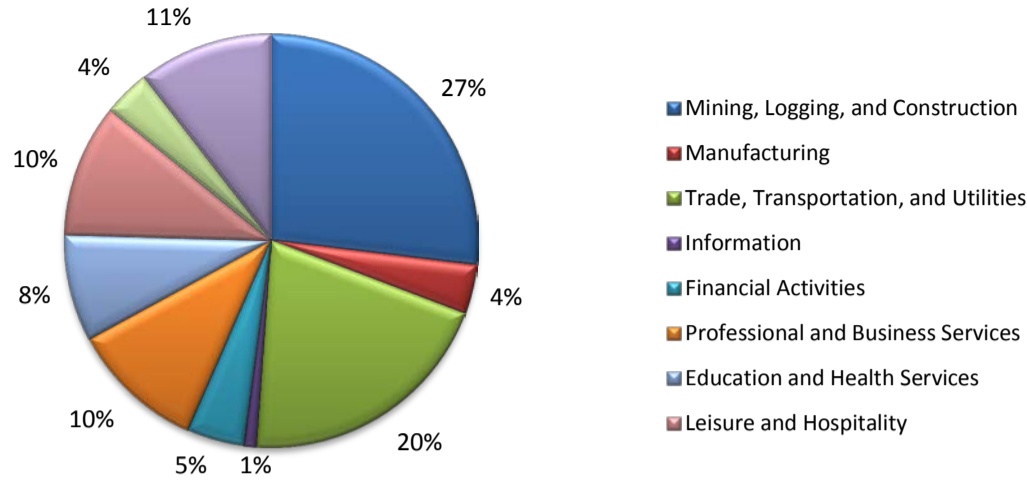


MIDLAND CES

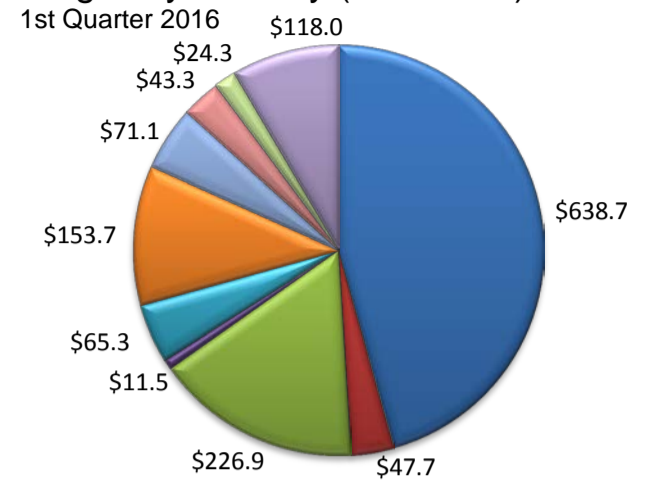
| Area Title | NAICS Industry | Apr-16 | Mar-16 | Apr-15 | Monthly Change | Monthly % | Yearly Change | Yearly % |
|------------|---|--------|--------|--------|----------------|-----------|---------------|----------|
| Midland | Total Nonfarm | 90,900 | 90,400 | 93,500 | 500 | 0.6% | -2,600 | -2.8% |
| Midland | Total Private | 80,900 | 80,500 | 83,900 | 400 | 0.5% | -3,000 | -3.6% |
| Midland | Goods Producing | 27,700 | 27,900 | 30,000 | -200 | -0.7% | -2,300 | -7.7% |
| Midland | ..Mining, Logging, and Construction | 24,100 | 24,300 | 26,300 | -200 | -0.8% | -2,200 | -8.4% |
| Midland | ..Manufacturing | 3,600 | 3,600 | 3,700 | 0 | 0.0% | -100 | -2.7% |
| Midland | Service Providing | 63,200 | 62,500 | 63,500 | 700 | 1.1% | -300 | -0.5% |
| Midland | ..Private Service Providing | 53,200 | 52,600 | 53,900 | 600 | 1.1% | -700 | -1.3% |
| Midland | ..Trade, Transportation, and Utilities | 18,800 | 18,700 | 19,500 | 100 | 0.5% | -700 | -3.6% |
| Midland | ...Wholesale Trade | 5,600 | 5,500 | 5,900 | 100 | 1.8% | -300 | -5.1% |
| Midland | ...Retail Trade | 9,300 | 9,300 | 9,400 | 0 | 0.0% | -100 | -1.1% |
| Midland | ...Transportation, Warehousing, and Utilities | 3,900 | 3,900 | 4,200 | 0 | 0.0% | -300 | -7.1% |
| Midland | ..Information | 900 | 900 | 900 | 0 | 0.0% | 0 | 0.0% |
| Midland | ..Financial Activities | 4,000 | 4,000 | 4,200 | 0 | 0.0% | -200 | -4.8% |
| Midland | ..Professional and Business Services | 9,600 | 9,500 | 9,800 | 100 | 1.1% | -200 | -2.0% |
| Midland | ..Educational and Health Services | 7,300 | 7,300 | 7,300 | 0 | 0.0% | 0 | 0.0% |
| Midland | ..Leisure and Hospitality | 9,300 | 9,000 | 9,000 | 300 | 3.3% | 300 | 3.3% |
| Midland | ..Other Services | 3,300 | 3,200 | 3,200 | 100 | 3.1% | 100 | 3.1% |
| Midland | Government | 10,000 | 9,900 | 9,600 | 100 | 1.0% | 400 | 4.2% |
| Midland | ..Federal Government | 600 | 600 | 500 | 0 | 0.0% | 100 | 20.0% |
| Midland | ..State Government | 500 | 500 | 500 | 0 | 0.0% | 0 | 0.0% |
| Midland | ..Local Government | 8,900 | 8,800 | 8,600 | 100 | 1.1% | 300 | 3.5% |

(Martin, Midland)

Industry Composition



Wages by Industry (in millions)



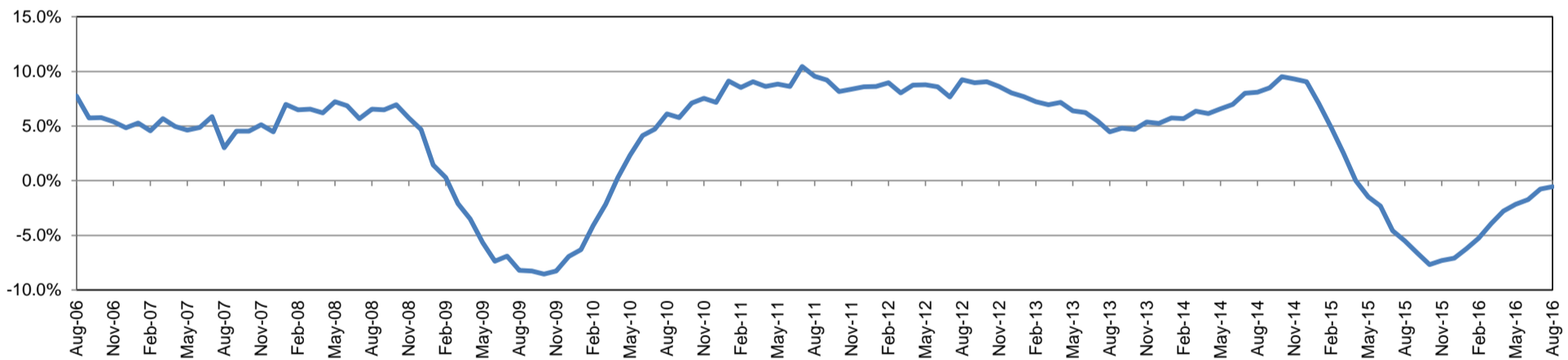
Employment by Industry

| | Aug-16 | Jul-16 | Aug-15 | Monthly Change | | Annual Change | |
|--------------------------------------|--------|--------|--------|----------------|-------|---------------|-------|
| | | | | Actual | % | Actual | % |
| Total Nonfarm | 90,400 | 90,800 | 90,900 | -400 | -0.4% | -500 | -0.6% |
| Mining, Logging, and Construction | 24,300 | 24,400 | 25,000 | -100 | -0.4% | -700 | -2.8% |
| Manufacturing | 3,500 | 3,500 | 3,600 | 0 | 0.0% | -100 | -2.8% |
| Trade, Transportation, and Utilities | 18,400 | 18,500 | 18,800 | -100 | -0.5% | -400 | -2.1% |
| Information | 900 | 900 | 900 | 0 | 0.0% | 0 | 0.0% |
| Financial Activities | 4,100 | 4,100 | 4,000 | 0 | 0.0% | 100 | 2.5% |
| Professional and Business Services | 9,500 | 9,600 | 9,500 | -100 | -1.0% | 0 | 0.0% |
| Education and Health Services | 7,500 | 7,300 | 7,200 | 200 | 2.7% | 300 | 4.2% |
| Leisure and Hospitality | 9,400 | 9,400 | 9,500 | 0 | 0.0% | -100 | -1.1% |
| Other Services | 3,300 | 3,400 | 3,300 | -100 | -2.9% | 0 | 0.0% |
| Government | 9,500 | 9,700 | 9,100 | -200 | -2.1% | 400 | 4.4% |

Industry Size Class

| Size Class | Employees per firm | Number of Firms | March 2016 | |
|------------|--------------------|-----------------|--------------------------|--------------------|
| | | | Employment in Size Class | % Total Employment |
| 9 | 1000+ | 3 | 6,223 | 7.3% |
| 8 | 500-999 | 15 | 10,545 | 12.4% |
| 7 | 250-499 | 17 | 5,563 | 6.5% |
| 6 | 100-249 | 105 | 15,610 | 18.3% |
| 5 | 50-99 | 190 | 13,045 | 15.3% |
| 4 | 20-49 | 528 | 16,005 | 18.8% |
| 3 | 10-19 | 598 | 8,101 | 9.5% |
| 2 | 5-9 | 840 | 5,561 | 6.5% |
| 1 | 1-4 | 2,155 | 4,444 | 5.2% |
| 0 | 0 | 475 | 0 | 0.0% |
| Total | | | 4,926 | 85,097 100.0% |

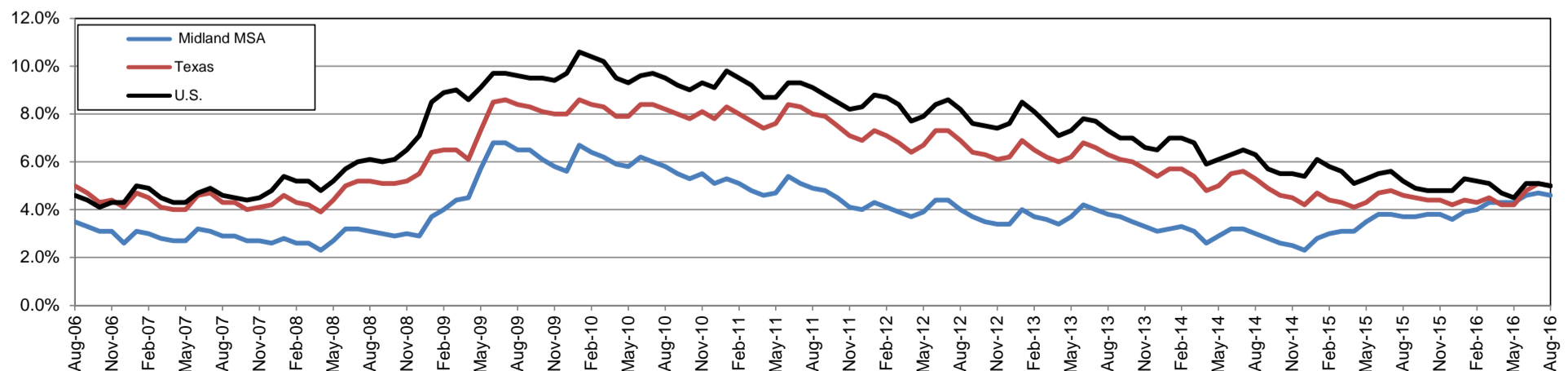
Annual Growth Rate for Total Nonagricultural Employment



Unemployment Information (all estimates in thousands)

| | Midland MSA | | | | Texas (Actual) | | | | United States (Actual) | | | |
|--------|-------------|------|--------|------|----------------|----------|--------|------|------------------------|-----------|---------|------|
| | C.L.F. | Emp. | Unemp. | Rate | C.L.F. | Emp. | Unemp. | Rate | C.L.F. | Emp. | Unemp. | Rate |
| Aug-16 | 90.3 | 86.1 | 4.2 | 4.6 | 13,378.9 | 12,709.7 | 669.2 | 5.0 | 159,800.0 | 151,804.0 | 7,996.0 | 5.0 |
| Jul-16 | 90.7 | 86.5 | 4.3 | 4.7 | 13,386.1 | 12,706.6 | 679.4 | 5.1 | 160,705.0 | 152,437.0 | 8,267.0 | 5.1 |
| Aug-15 | 89.5 | 86.2 | 3.3 | 3.7 | 13,047.6 | 12,447.6 | 600.0 | 4.6 | 157,390.0 | 149,228.0 | 8,162.0 | 5.2 |

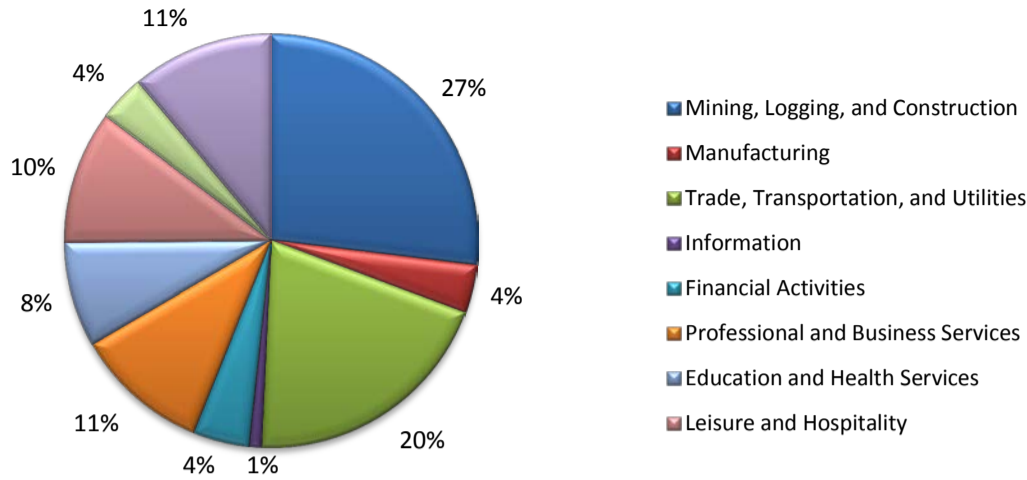
Historical Unemployment Rates



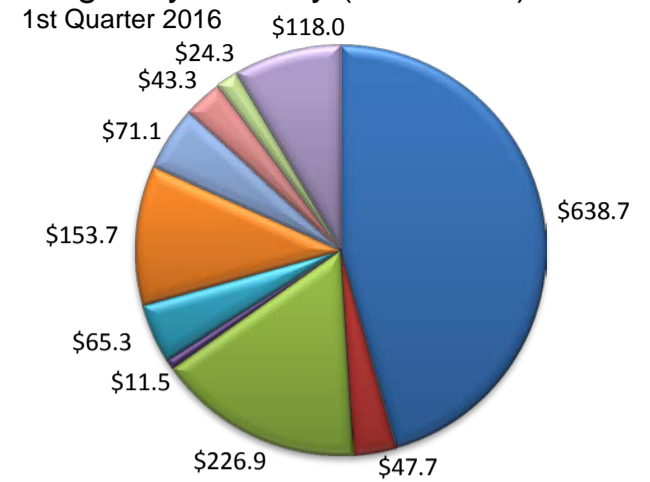
| MIDLAND CES | | | | | | | | |
|-------------|---|--------|--------|--------|----------------|-----------|---------------|----------|
| Area Title | NAICS Industry | Aug-16 | Jul-16 | Aug-15 | Monthly Change | Monthly % | Yearly Change | Yearly % |
| Midland | Total Nonfarm | 90,400 | 90,800 | 90,900 | -400 | -0.4% | -500 | -0.6% |
| Midland | Total Private | 80,900 | 81,100 | 81,800 | -200 | -0.2% | -900 | -1.1% |
| Midland | Goods Producing | 27,800 | 27,900 | 28,600 | -100 | -0.4% | -800 | -2.8% |
| Midland | .Mining, Logging, and Construction | 24,300 | 24,400 | 25,000 | -100 | -0.4% | -700 | -2.8% |
| Midland | .Manufacturing | 3,500 | 3,500 | 3,600 | 0 | 0.0% | -100 | -2.8% |
| Midland | Service Providing | 62,600 | 62,900 | 62,300 | -300 | -0.5% | 300 | 0.5% |
| Midland | .Private Service Providing | 53,100 | 53,200 | 53,200 | -100 | -0.2% | -100 | -0.2% |
| Midland | ..Trade, Transportation, and Utilities | 18,400 | 18,500 | 18,800 | -100 | -0.5% | -400 | -2.1% |
| Midland | ...Wholesale Trade | 5,400 | 5,400 | 5,500 | 0 | 0.0% | -100 | -1.8% |
| Midland | ...Retail Trade | 9,000 | 9,100 | 9,300 | -100 | -1.1% | -300 | -3.2% |
| Midland | ...Transportation, Warehousing, and Utilities | 4,000 | 4,000 | 4,000 | 0 | 0.0% | 0 | 0.0% |
| Midland | ..Information | 900 | 900 | 900 | 0 | 0.0% | 0 | 0.0% |
| Midland | ..Financial Activities | 4,100 | 4,100 | 4,000 | 0 | 0.0% | 100 | 2.5% |
| Midland | ..Professional and Business Services | 9,500 | 9,600 | 9,500 | -100 | -1.0% | 0 | 0.0% |
| Midland | ..Educational and Health Services | 7,500 | 7,300 | 7,200 | 200 | 2.7% | 300 | 4.2% |
| Midland | ..Leisure and Hospitality | 9,400 | 9,400 | 9,500 | 0 | 0.0% | -100 | -1.1% |
| Midland | ..Other Services | 3,300 | 3,400 | 3,300 | -100 | -2.9% | 0 | 0.0% |
| Midland | Government | 9,500 | 9,700 | 9,100 | -200 | -2.1% | 400 | 4.4% |
| Midland | .Federal Government | 600 | 600 | 500 | 0 | 0.0% | 100 | 20.0% |
| Midland | .State Government | 500 | 500 | 500 | 0 | 0.0% | 0 | 0.0% |
| Midland | .Local Government | 8,400 | 8,600 | 8,100 | -200 | -2.3% | 300 | 3.7% |

(Martin, Midland)

Industry Composition



Wages by Industry (in millions)



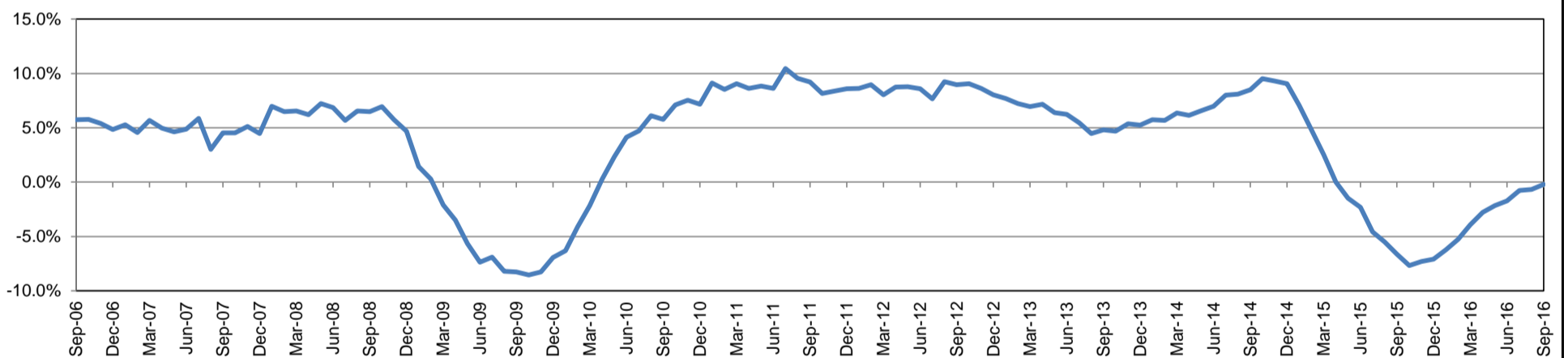
Employment by Industry

| | Sep-16 | Aug-16 | Sep-15 | Monthly Change | | Annual Change | |
|--------------------------------------|--------|--------|--------|----------------|-------|---------------|-------|
| | | | | Actual | % | Actual | % |
| Total Nonfarm | 90,300 | 90,300 | 90,500 | 0 | 0.0% | -200 | -0.2% |
| Mining, Logging, and Construction | 24,300 | 24,300 | 24,400 | 0 | 0.0% | -100 | -0.4% |
| Manufacturing | 3,400 | 3,400 | 3,500 | 0 | 0.0% | -100 | -2.9% |
| Trade, Transportation, and Utilities | 18,100 | 18,300 | 18,800 | -200 | -1.1% | -700 | -3.7% |
| Information | 900 | 900 | 900 | 0 | 0.0% | 0 | 0.0% |
| Financial Activities | 4,000 | 4,000 | 4,000 | 0 | 0.0% | 0 | 0.0% |
| Professional and Business Services | 9,500 | 9,600 | 9,400 | -100 | -1.0% | 100 | 1.1% |
| Education and Health Services | 7,400 | 7,400 | 7,300 | 0 | 0.0% | 100 | 1.4% |
| Leisure and Hospitality | 9,400 | 9,500 | 9,400 | -100 | -1.1% | 0 | 0.0% |
| Other Services | 3,300 | 3,400 | 3,200 | -100 | -2.9% | 100 | 3.1% |
| Government | 10,000 | 9,500 | 9,600 | 500 | 5.3% | 400 | 4.2% |

Industry Size Class

| Size Class | Employees per firm | Number of Firms | March 2016 | |
|------------|--------------------|-----------------|--------------------------|--------------------|
| | | | Employment in Size Class | % Total Employment |
| 9 | 1000+ | 3 | 6,223 | 7.3% |
| 8 | 500-999 | 15 | 10,545 | 12.4% |
| 7 | 250-499 | 17 | 5,563 | 6.5% |
| 6 | 100-249 | 105 | 15,610 | 18.3% |
| 5 | 50-99 | 190 | 13,045 | 15.3% |
| 4 | 20-49 | 528 | 16,005 | 18.8% |
| 3 | 10-19 | 598 | 8,101 | 9.5% |
| 2 | 5-9 | 840 | 5,561 | 6.5% |
| 1 | 1-4 | 2,155 | 4,444 | 5.2% |
| 0 | 0 | 475 | 0 | 0.0% |
| Total | | | 4,926 | 85,097 100.0% |

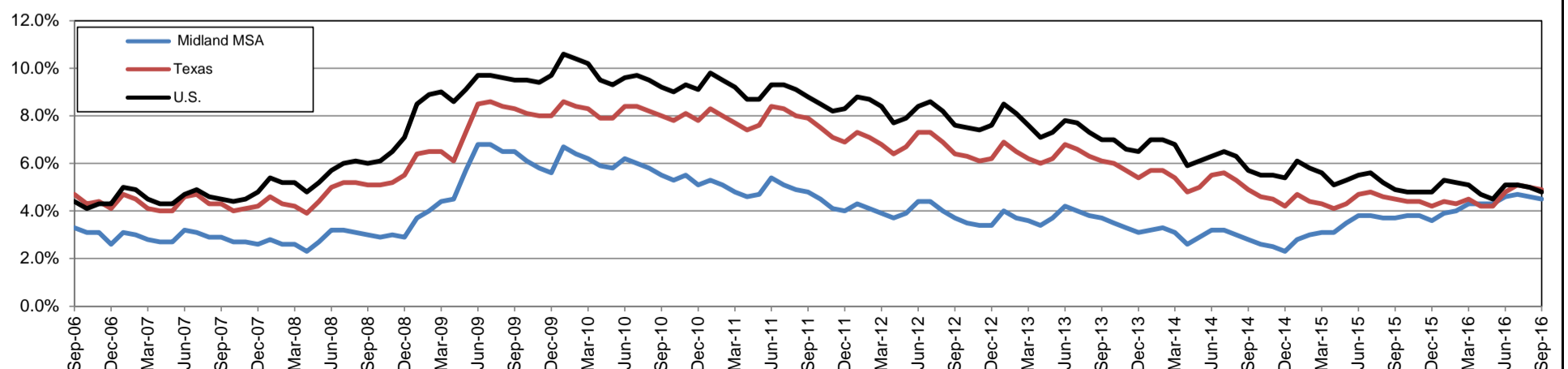
Annual Growth Rate for Total Nonagricultural Employment



Unemployment Information (all estimates in thousands)

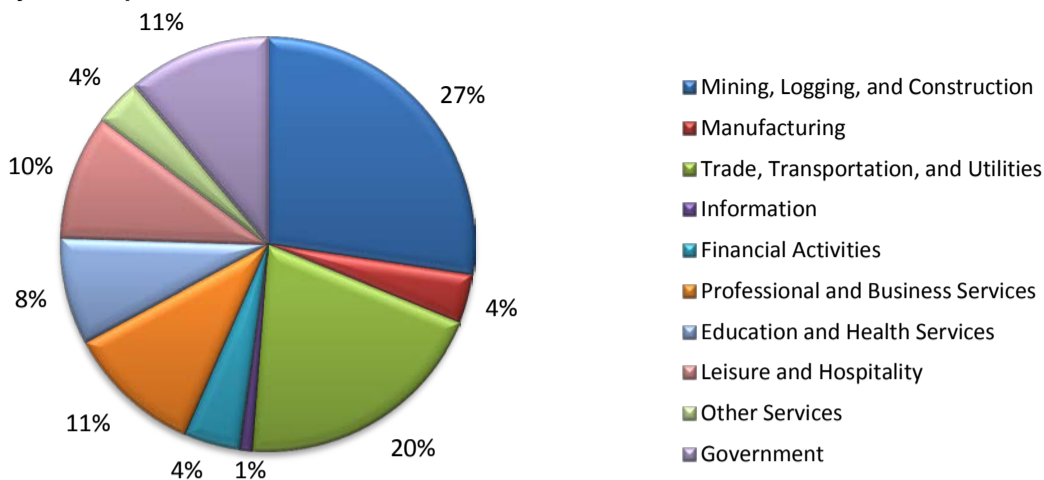
| | Midland MSA | | | | Texas (Actual) | | | | United States (Actual) | | | |
|--------|-------------|------|--------|------|----------------|----------|--------|------|------------------------|-----------|---------|------|
| | C.L.F. | Emp. | Unemp. | Rate | C.L.F. | Emp. | Unemp. | Rate | C.L.F. | Emp. | Unemp. | Rate |
| Sep-16 | 90.2 | 86.1 | 4.1 | 4.5 | 13,416.8 | 12,754.7 | 662.1 | 4.9 | 159,636.0 | 151,977.0 | 7,658.0 | 4.8 |
| Aug-16 | 90.1 | 85.9 | 4.1 | 4.6 | 13,378.4 | 12,709.5 | 669.0 | 5.0 | 159,800.0 | 151,804.0 | 7,996.0 | 5.0 |
| Sep-15 | 89.1 | 85.8 | 3.3 | 3.7 | 13,067.2 | 12,480.5 | 586.8 | 4.5 | 156,607.0 | 148,980.0 | 7,628.0 | 4.9 |

Historical Unemployment Rates

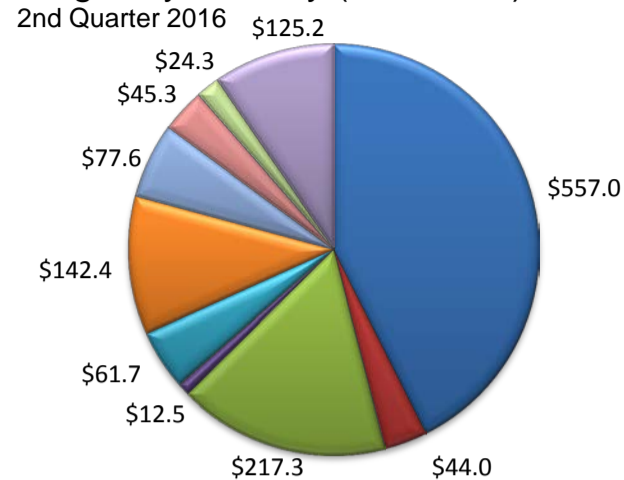


(Martin, Midland)

Industry Composition



Wages by Industry (in millions)



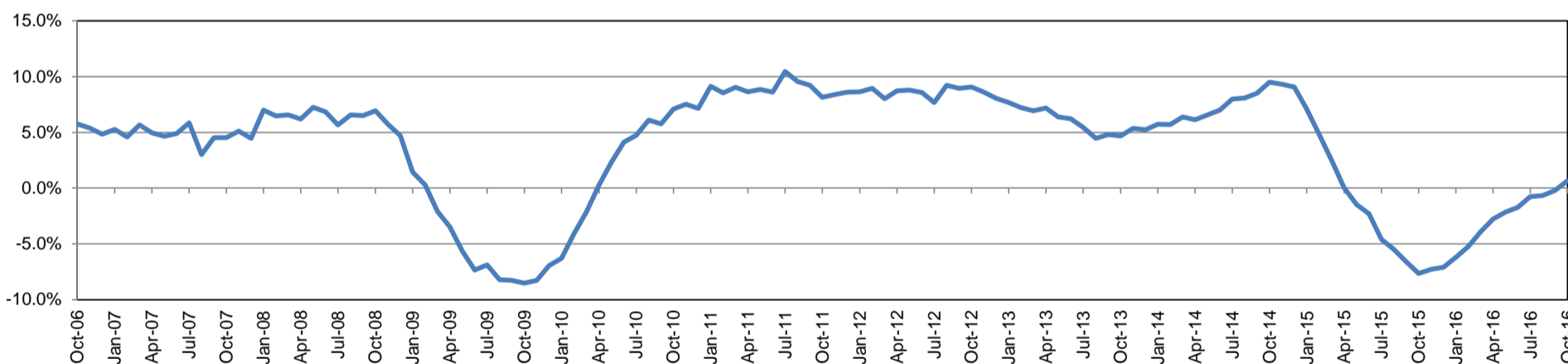
Employment by Industry

| | Oct-16 | Sep-16 | Oct-15 | Monthly Change | | Annual Change | |
|--------------------------------------|--------|--------|--------|----------------|-------|---------------|-------|
| | | | | Actual | % | Actual | % |
| Total Nonfarm | 91,000 | 90,300 | 90,400 | 700 | 0.8% | 600 | 0.7% |
| Mining, Logging, and Construction | 24,900 | 24,300 | 24,700 | 600 | 2.5% | 200 | 0.8% |
| Manufacturing | 3,500 | 3,400 | 3,500 | 100 | 2.9% | 0 | 0.0% |
| Trade, Transportation, and Utilities | 18,200 | 18,100 | 18,900 | 100 | 0.6% | -700 | -3.7% |
| Information | 900 | 900 | 900 | 0 | 0.0% | 0 | 0.0% |
| Financial Activities | 4,000 | 4,000 | 4,000 | 0 | 0.0% | 0 | 0.0% |
| Professional and Business Services | 9,600 | 9,500 | 9,500 | 100 | 1.1% | 100 | 1.1% |
| Education and Health Services | 7,600 | 7,400 | 7,000 | 200 | 2.7% | 600 | 8.6% |
| Leisure and Hospitality | 8,900 | 9,400 | 8,900 | -500 | -5.3% | 0 | 0.0% |
| Other Services | 3,300 | 3,300 | 3,200 | 0 | 0.0% | 100 | 3.1% |
| Government | 10,100 | 10,000 | 9,800 | 100 | 1.0% | 300 | 3.1% |

Industry Size Class June 2016

| Size Class | Employees per firm | Number of Firms | Employment in Size Class | % Total Employment |
|------------|--------------------|-----------------|--------------------------|--------------------|
| 9 | 1000+ | 4 | 7,215 | 8.5% |
| 8 | 500-999 | 12 | 8,395 | 9.9% |
| 7 | 250-499 | 21 | 6,852 | 8.1% |
| 6 | 100-249 | 102 | 14,999 | 17.7% |
| 5 | 50-99 | 189 | 12,984 | 15.3% |
| 4 | 20-49 | 516 | 15,681 | 18.5% |
| 3 | 10-19 | 604 | 8,271 | 9.8% |
| 2 | 5-9 | 854 | 5,674 | 6.7% |
| 1 | 1-4 | 2,204 | 4,575 | 5.4% |
| 0 | 0 | 492 | 0 | 0.0% |
| Total | | 4,998 | 84,646 | 100.0% |

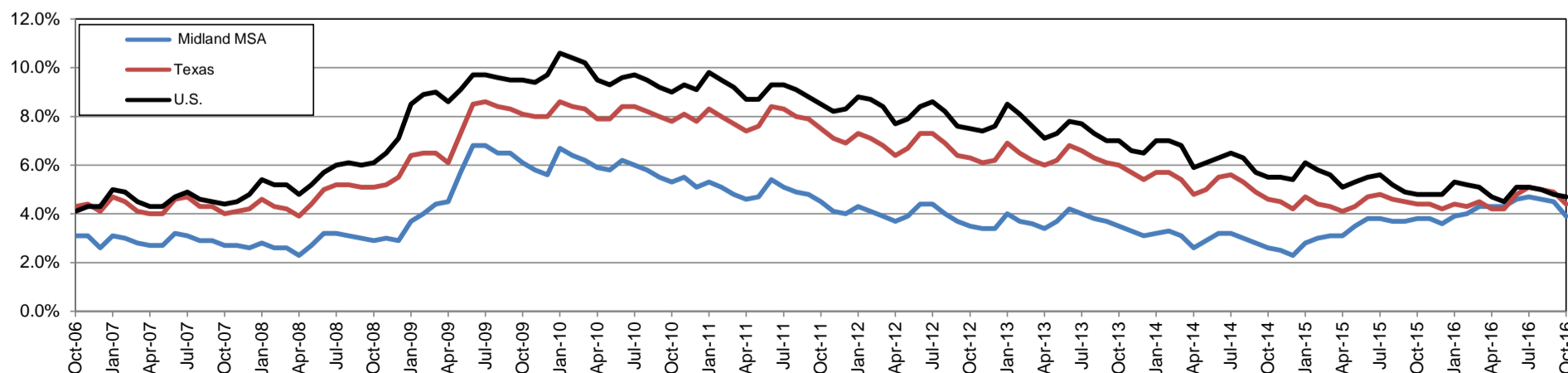
Annual Growth Rate for Total Nonagricultural Employment



Unemployment Information (all estimates in thousands)

| | Midland MSA | | | | Texas (Actual) | | | | United States (Actual) | | | |
|--------|-------------|------|--------|------|----------------|----------|--------|------|------------------------|-----------|---------|------|
| | C.L.F. | Emp. | Unemp. | Rate | C.L.F. | Emp. | Unemp. | Rate | C.L.F. | Emp. | Unemp. | Rate |
| Oct-16 | 89.6 | 86.1 | 3.5 | 3.9 | 13,334.6 | 12,749.8 | 584.8 | 4.4 | 159,783.0 | 152,335.0 | 7,447.0 | 4.7 |
| Sep-16 | 90.1 | 86.0 | 4.1 | 4.5 | 13,416.5 | 12,754.6 | 661.9 | 4.9 | 159,636.0 | 151,977.0 | 7,658.0 | 4.8 |
| Oct-15 | 88.9 | 85.5 | 3.4 | 3.8 | 13,114.4 | 12,531.9 | 582.6 | 4.4 | 157,313.0 | 149,716.0 | 7,597.0 | 4.8 |

Historical Unemployment Rates

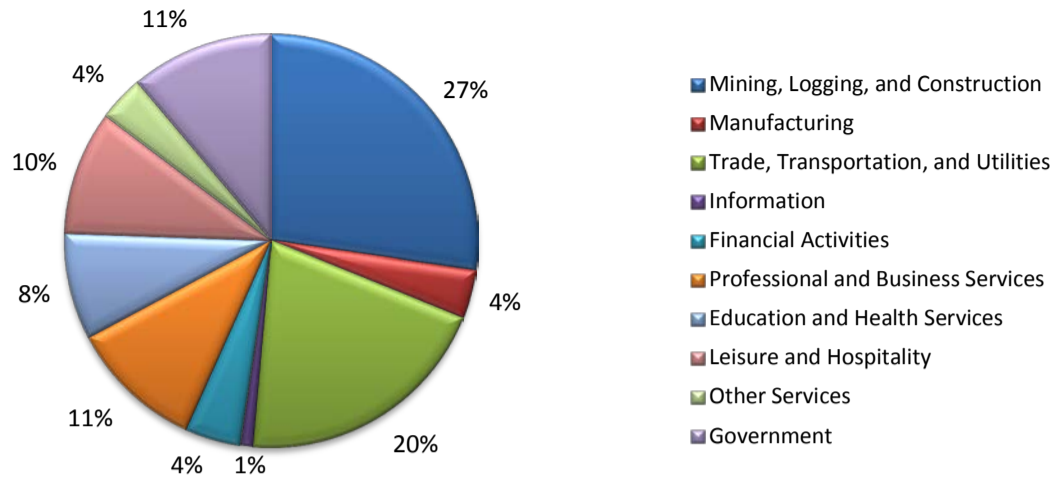


MIDLAND CES

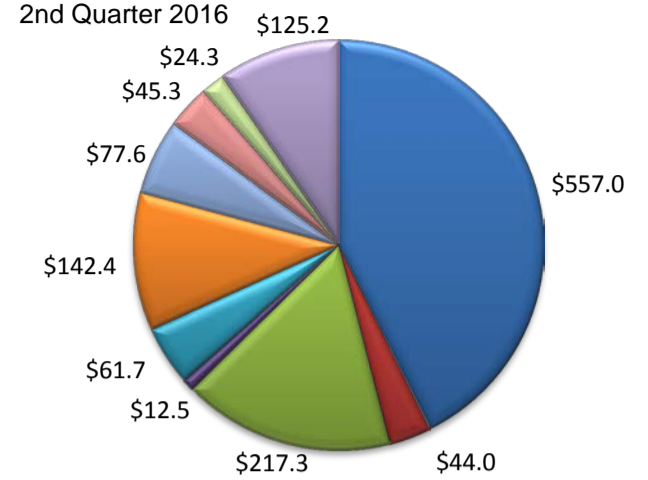
| Area Title | NAICS Industry | Oct-16 | Sep-16 | Oct-15 | Monthly Change | Monthly % | Yearly Change | Yearly % |
|------------|---|--------|--------|--------|----------------|-----------|---------------|----------|
| Midland | Total Nonfarm | 91,000 | 90,300 | 90,400 | 700 | 0.8% | 600 | 0.7% |
| Midland | Total Private | 80,900 | 80,300 | 80,600 | 600 | 0.7% | 300 | 0.4% |
| Midland | Goods Producing | 28,400 | 27,700 | 28,200 | 700 | 2.5% | 200 | 0.7% |
| Midland | ..Mining, Logging, and Construction | 24,900 | 24,300 | 24,700 | 600 | 2.5% | 200 | 0.8% |
| Midland | ..Manufacturing | 3,500 | 3,400 | 3,500 | 100 | 2.9% | 0 | 0.0% |
| Midland | Service Providing | 62,600 | 62,600 | 62,200 | 0 | 0.0% | 400 | 0.6% |
| Midland | ..Private Service Providing | 52,500 | 52,600 | 52,400 | -100 | -0.2% | 100 | 0.2% |
| Midland | ..Trade, Transportation, and Utilities | 18,200 | 18,100 | 18,900 | 100 | 0.6% | -700 | -3.7% |
| Midland | ...Wholesale Trade | 5,500 | 5,400 | 5,500 | 100 | 1.9% | 0 | 0.0% |
| Midland | ...Retail Trade | 8,800 | 8,800 | 9,400 | 0 | 0.0% | -600 | -6.4% |
| Midland | ...Transportation, Warehousing, and Utilities | 3,900 | 3,900 | 4,000 | 0 | 0.0% | -100 | -2.5% |
| Midland | ..Information | 900 | 900 | 900 | 0 | 0.0% | 0 | 0.0% |
| Midland | ..Financial Activities | 4,000 | 4,000 | 4,000 | 0 | 0.0% | 0 | 0.0% |
| Midland | ..Professional and Business Services | 9,600 | 9,500 | 9,500 | 100 | 1.1% | 100 | 1.1% |
| Midland | ..Educational and Health Services | 7,600 | 7,400 | 7,000 | 200 | 2.7% | 600 | 8.6% |
| Midland | ..Leisure and Hospitality | 8,900 | 9,400 | 8,900 | -500 | -5.3% | 0 | 0.0% |
| Midland | ..Other Services | 3,300 | 3,300 | 3,200 | 0 | 0.0% | 100 | 3.1% |
| Midland | Government | 10,100 | 10,000 | 9,800 | 100 | 1.0% | 300 | 3.1% |
| Midland | ..Federal Government | 600 | 600 | 600 | 0 | 0.0% | 0 | 0.0% |
| Midland | ..State Government | 500 | 500 | 500 | 0 | 0.0% | 0 | 0.0% |
| Midland | ..Local Government | 9,000 | 8,900 | 8,700 | 100 | 1.1% | 300 | 3.4% |

(Martin, Midland)

Industry Composition



Wages by Industry (in millions)



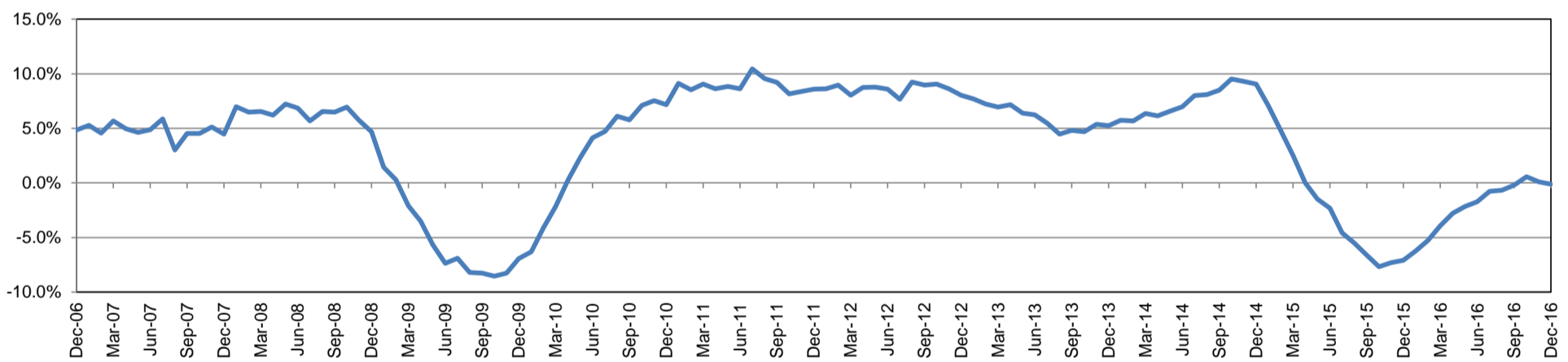
Employment by Industry

| | Dec-16 | Nov-16 | Dec-15 | Monthly Change | | Annual Change | |
|--------------------------------------|--------|--------|--------|----------------|-------|---------------|-------|
| | | | | Actual | % | Actual | % |
| Total Nonfarm | 91,600 | 91,600 | 91,700 | 0 | 0.0% | -100 | -0.1% |
| Mining, Logging, and Construction | 25,000 | 25,000 | 24,900 | 0 | 0.0% | 100 | 0.4% |
| Manufacturing | 3,500 | 3,500 | 3,600 | 0 | 0.0% | -100 | -2.8% |
| Trade, Transportation, and Utilities | 18,600 | 18,500 | 19,600 | 100 | 0.5% | -1,000 | -5.1% |
| Information | 900 | 900 | 900 | 0 | 0.0% | 0 | 0.0% |
| Financial Activities | 4,000 | 4,000 | 4,000 | 0 | 0.0% | 0 | 0.0% |
| Professional and Business Services | 9,600 | 9,600 | 9,400 | 0 | 0.0% | 200 | 2.1% |
| Education and Health Services | 7,600 | 7,600 | 7,300 | 0 | 0.0% | 300 | 4.1% |
| Leisure and Hospitality | 8,900 | 9,000 | 8,900 | -100 | -1.1% | 0 | 0.0% |
| Other Services | 3,300 | 3,300 | 3,200 | 0 | 0.0% | 100 | 3.1% |
| Government | 10,200 | 10,200 | 9,900 | 0 | 0.0% | 300 | 3.0% |

Industry Size Class

| Size Class | Employees per firm | Number of Firms | June 2016 | | |
|------------|--------------------|-----------------|--------------------------|--------------------|--------|
| | | | Employment in Size Class | % Total Employment | |
| 9 | 1000+ | 4 | 7,215 | 8.5% | |
| 8 | 500-999 | 12 | 8,395 | 9.9% | |
| 7 | 250-499 | 21 | 6,852 | 8.1% | |
| 6 | 100-249 | 102 | 14,999 | 17.7% | |
| 5 | 50-99 | 189 | 12,984 | 15.3% | |
| 4 | 20-49 | 516 | 15,681 | 18.5% | |
| 3 | 10-19 | 604 | 8,271 | 9.8% | |
| 2 | 5-9 | 854 | 5,674 | 6.7% | |
| 1 | 1-4 | 2,204 | 4,575 | 5.4% | |
| 0 | 0 | 492 | 0 | 0.0% | |
| Total | | | 4,998 | 84,646 | 100.0% |

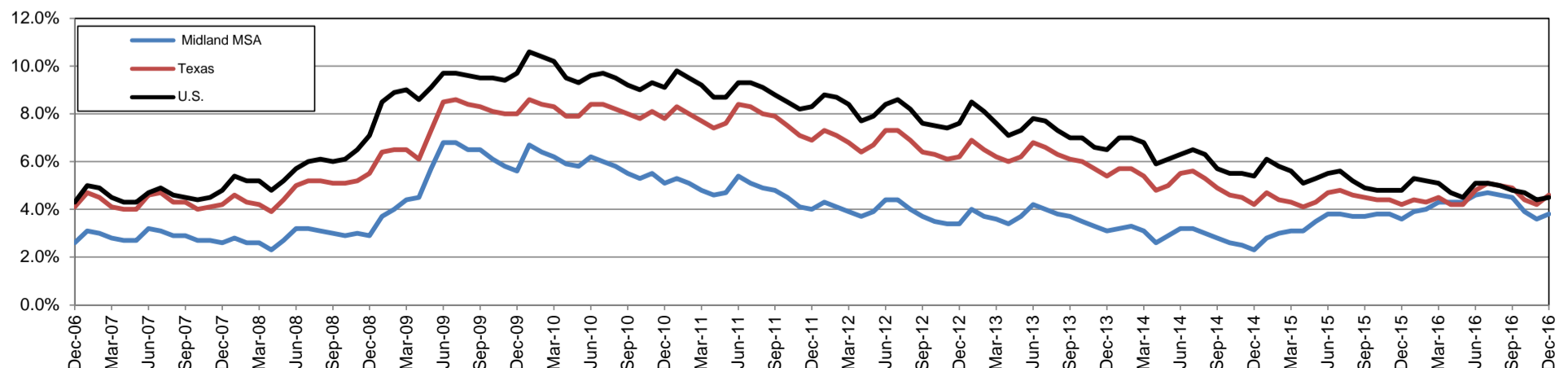
Annual Growth Rate for Total Nonagricultural Employment



Unemployment Information (all estimates in thousands)

| | Midland MSA | | | | Texas (Actual) | | | | United States (Actual) | | | |
|--------|-------------|------|--------|------|----------------|----------|--------|------|------------------------|-----------|---------|------|
| | C.L.F. | Emp. | Unemp. | Rate | C.L.F. | Emp. | Unemp. | Rate | C.L.F. | Emp. | Unemp. | Rate |
| Dec-16 | 89.9 | 86.5 | 3.4 | 3.8 | 13,398.8 | 12,788.9 | 609.9 | 4.6 | 158,968.0 | 151,798.0 | 7,170.0 | 4.5 |
| Nov-16 | 90.0 | 86.7 | 3.3 | 3.6 | 13,390.5 | 12,823.8 | 566.7 | 4.2 | 159,451.0 | 152,385.0 | 7,066.0 | 4.4 |
| Dec-15 | 89.6 | 86.3 | 3.2 | 3.6 | 13,136.9 | 12,580.2 | 556.7 | 4.2 | 157,245.0 | 149,703.0 | 7,542.0 | 4.8 |

Historical Unemployment Rates



MIDLAND CES

| Area Title | NAICS Industry | Dec-16 | Nov-16 | Dec-15 | Monthly Change | Monthly % | Yearly Change | Yearly % |
|------------|---|--------|--------|--------|----------------|-----------|---------------|----------|
| Midland | Total Nonfarm | 91,600 | 91,600 | 91,700 | 0 | 0.0% | -100 | -0.1% |
| Midland | Total Private | 81,400 | 81,400 | 81,800 | 0 | 0.0% | -400 | -0.5% |
| Midland | Goods Producing | 28,500 | 28,500 | 28,500 | 0 | 0.0% | 0 | 0.0% |
| Midland | ..Mining, Logging, and Construction | 25,000 | 25,000 | 24,900 | 0 | 0.0% | 100 | 0.4% |
| Midland | ..Manufacturing | 3,500 | 3,500 | 3,600 | 0 | 0.0% | -100 | -2.8% |
| Midland | Service Providing | 63,100 | 63,100 | 63,200 | 0 | 0.0% | -100 | -0.2% |
| Midland | ..Private Service Providing | 52,900 | 52,900 | 53,300 | 0 | 0.0% | -400 | -0.8% |
| Midland | ..Trade, Transportation, and Utilities | 18,600 | 18,500 | 19,600 | 100 | 0.5% | -1,000 | -5.1% |
| Midland | ...Wholesale Trade | 5,500 | 5,500 | 5,500 | 0 | 0.0% | 0 | 0.0% |
| Midland | ...Retail Trade | 9,100 | 9,000 | 9,900 | 100 | 1.1% | -800 | -8.1% |
| Midland | ...Transportation, Warehousing, and Utilities | 4,000 | 4,000 | 4,200 | 0 | 0.0% | -200 | -4.8% |
| Midland | ..Information | 900 | 900 | 900 | 0 | 0.0% | 0 | 0.0% |
| Midland | ..Financial Activities | 4,000 | 4,000 | 4,000 | 0 | 0.0% | 0 | 0.0% |
| Midland | ..Professional and Business Services | 9,600 | 9,600 | 9,400 | 0 | 0.0% | 200 | 2.1% |
| Midland | ..Educational and Health Services | 7,600 | 7,600 | 7,300 | 0 | 0.0% | 300 | 4.1% |
| Midland | ..Leisure and Hospitality | 8,900 | 9,000 | 8,900 | -100 | -1.1% | 0 | 0.0% |
| Midland | ..Other Services | 3,300 | 3,300 | 3,200 | 0 | 0.0% | 100 | 3.1% |
| Midland | Government | 10,200 | 10,200 | 9,900 | 0 | 0.0% | 300 | 3.0% |
| Midland | ..Federal Government | 600 | 600 | 600 | 0 | 0.0% | 0 | 0.0% |
| Midland | ..State Government | 500 | 500 | 500 | 0 | 0.0% | 0 | 0.0% |
| Midland | ..Local Government | 9,100 | 9,100 | 8,800 | 0 | 0.0% | 300 | 3.4% |