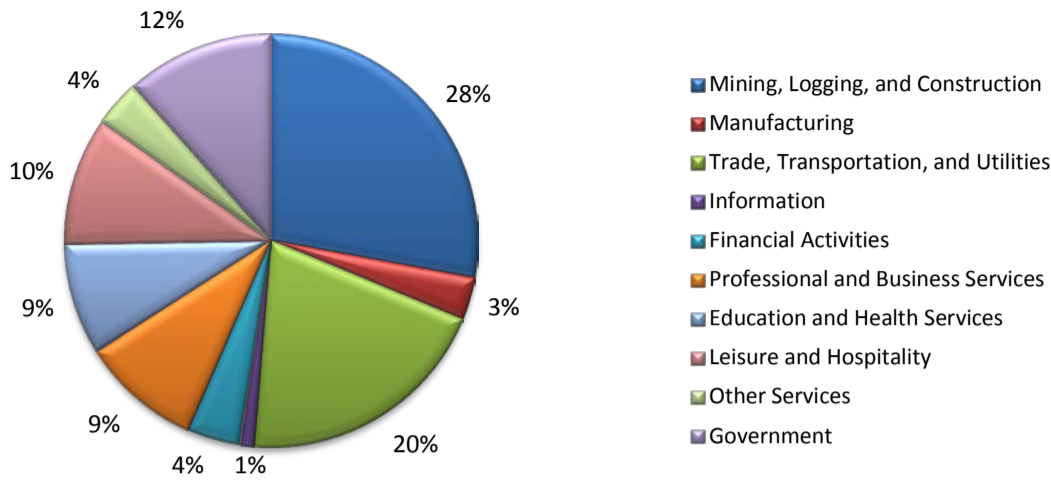
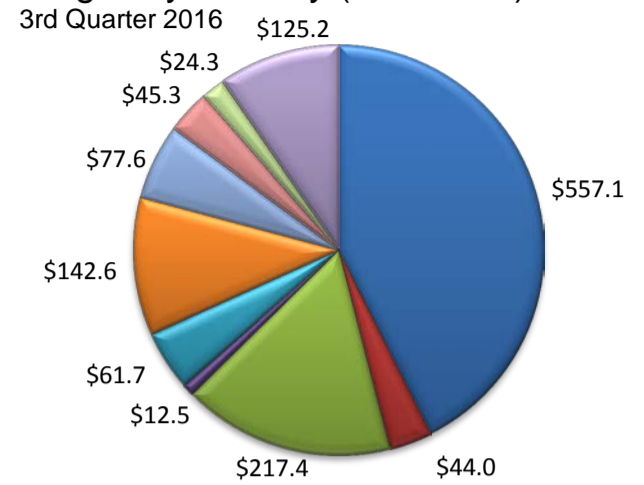


(Martin, Midland)

Industry Composition



Wages by Industry (in millions)



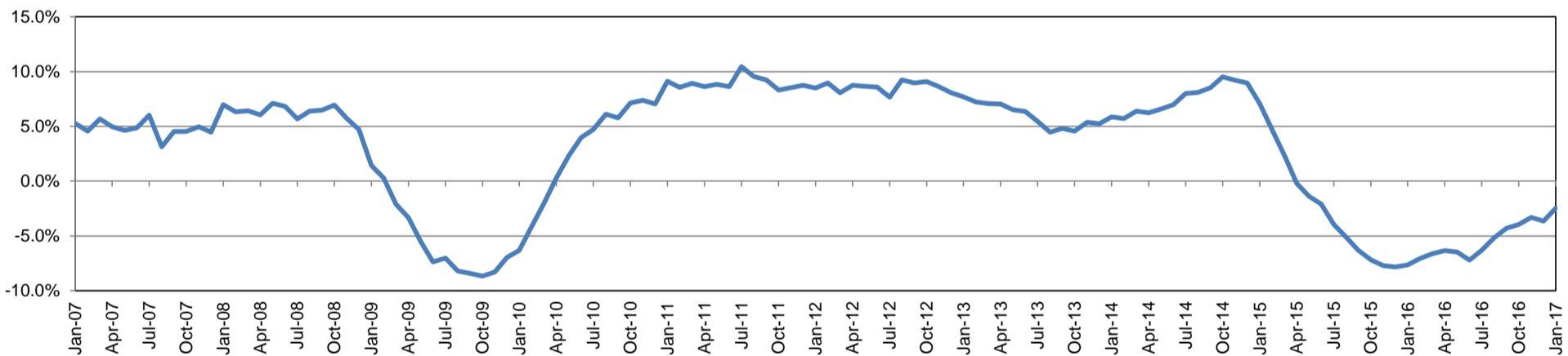
Employment by Industry

| | Jan-17 | Dec-16 | Jan-16 | Monthly Change | | Annual Change | |
|--------------------------------------|--------|--------|--------|----------------|-------|---------------|-------|
| | | | | Actual | % | Actual | % |
| Total Nonfarm | 87,100 | 87,500 | 89,300 | -400 | -0.5% | -2,200 | -2.5% |
| Mining, Logging, and Construction | 24,300 | 24,200 | 24,700 | 100 | 0.4% | -400 | -1.6% |
| Manufacturing | 2,900 | 2,900 | 3,200 | 0 | 0.0% | -300 | -9.4% |
| Trade, Transportation, and Utilities | 17,500 | 18,200 | 18,700 | -700 | -3.9% | -1,200 | -6.4% |
| Information | 1,000 | 1,000 | 1,000 | 0 | 0.0% | 0 | 0.0% |
| Financial Activities | 3,600 | 3,600 | 3,800 | 0 | 0.0% | -200 | -5.3% |
| Professional and Business Services | 8,200 | 8,200 | 8,800 | 0 | 0.0% | -600 | -6.8% |
| Education and Health Services | 7,600 | 7,600 | 7,400 | 0 | 0.0% | 200 | 2.7% |
| Leisure and Hospitality | 8,700 | 8,700 | 8,700 | 0 | 0.0% | 0 | 0.0% |
| Other Services | 3,200 | 3,100 | 3,200 | 100 | 3.2% | 0 | 0.0% |
| Government | 10,100 | 10,000 | 9,800 | 100 | 1.0% | 300 | 3.1% |

Industry Size Class September 2016

| Size Class | Employees per firm | Number of Firms | Employment in Size Class | % Total Employment |
|------------|--------------------|-----------------|--------------------------|--------------------|
| 9 | 1000+ | 4 | 7,200 | 8.5% |
| 8 | 500-999 | 11 | 7,885 | 9.3% |
| 7 | 250-499 | 21 | 7,065 | 8.3% |
| 6 | 100-249 | 103 | 15,169 | 17.9% |
| 5 | 50-99 | 196 | 13,563 | 16.0% |
| 4 | 20-49 | 523 | 15,764 | 18.6% |
| 3 | 10-19 | 594 | 8,136 | 9.6% |
| 2 | 5-9 | 834 | 5,521 | 6.5% |
| 1 | 1-4 | 2,221 | 4,621 | 5.4% |
| 0 | 0 | 516 | 0 | 0.0% |
| Total | | 5,023 | 84,924 | 100.0% |

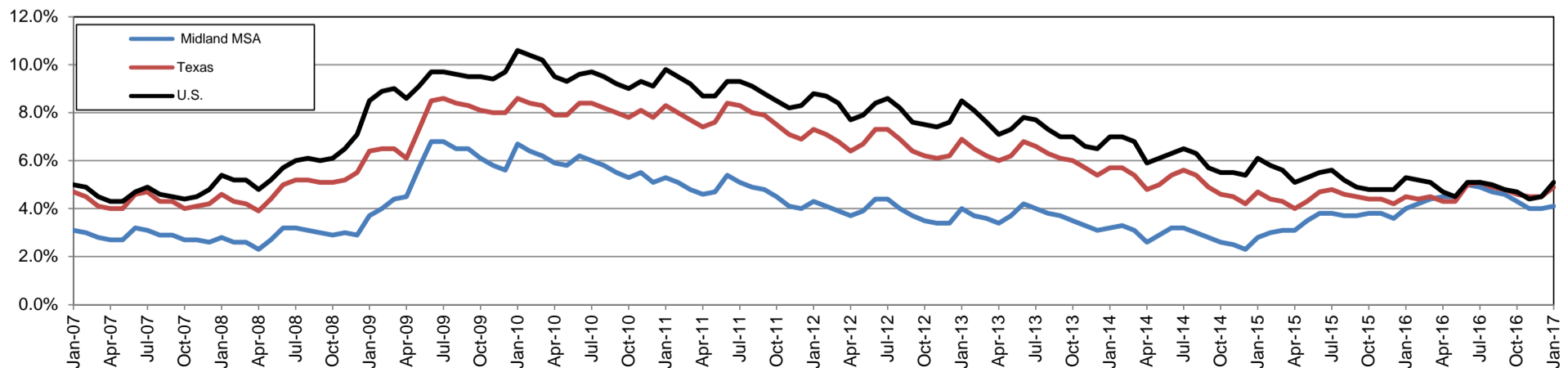
Annual Growth Rate for Total Nonagricultural Employment



Unemployment Information (all estimates in thousands)

| | Midland MSA | | | | Texas (Actual) | | | | United States (Actual) | | | |
|--------|-------------|------|--------|------|----------------|----------|--------|------|------------------------|-----------|---------|------|
| | C.L.F. | Emp. | Unemp. | Rate | C.L.F. | Emp. | Unemp. | Rate | C.L.F. | Emp. | Unemp. | Rate |
| Jan-17 | 86.4 | 82.8 | 3.6 | 4.1 | 13,358.0 | 12,697.1 | 660.9 | 4.9 | 158,676.0 | 150,527.0 | 8,149.0 | 5.1 |
| Dec-16 | 86.2 | 82.8 | 3.4 | 4.0 | 13,353.3 | 12,747.3 | 606.0 | 4.5 | 158,968.0 | 151,798.0 | 7,170.0 | 4.5 |
| Jan-16 | 88.7 | 85.2 | 3.5 | 4.0 | 13,113.0 | 12,521.5 | 591.5 | 4.5 | 157,347.0 | 149,037.0 | 8,309.0 | 5.3 |

Historical Unemployment Rates

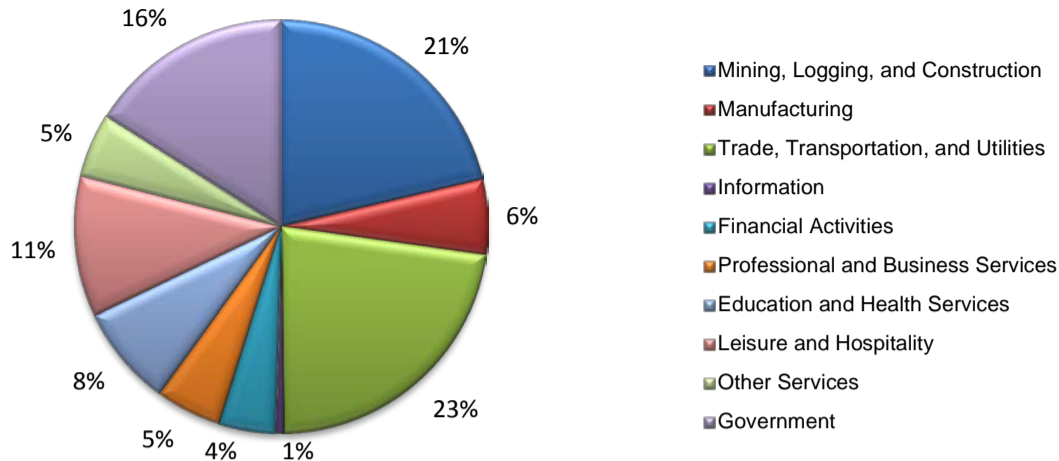


MIDLAND CES

| Area Title | NAICS Industry | Jan-17 | Dec-16 | Jan-16 | Monthly Change | Monthly % | Yearly Change | Yearly % |
|------------|---|--------|--------|--------|----------------|-----------|---------------|----------|
| Midland | Total Nonfarm | 87,100 | 87,500 | 89,300 | -400 | -0.5% | -2,200 | -2.5% |
| Midland | Total Private | 77,000 | 77,500 | 79,500 | -500 | -0.6% | -2,500 | -3.1% |
| Midland | Goods Producing | 27,200 | 27,100 | 27,900 | 100 | 0.4% | -700 | -2.5% |
| Midland | .Mining, Logging, and Construction | 24,300 | 24,200 | 24,700 | 100 | 0.4% | -400 | -1.6% |
| Midland | .Manufacturing | 2,900 | 2,900 | 3,200 | 0 | 0.0% | -300 | -9.4% |
| Midland | Service Providing | 59,900 | 60,400 | 61,400 | -500 | -0.8% | -1,500 | -2.4% |
| Midland | .Private Service Providing | 49,800 | 50,400 | 51,600 | -600 | -1.2% | -1,800 | -3.5% |
| Midland | ..Trade, Transportation, and Utilities | 17,500 | 18,200 | 18,700 | -700 | -3.8% | -1,200 | -6.4% |
| Midland | ...Wholesale Trade | 4,800 | 4,800 | 5,100 | 0 | 0.0% | -300 | -5.9% |
| Midland | ...Retail Trade | 9,000 | 9,600 | 9,600 | -600 | -6.3% | -600 | -6.3% |
| Midland | ...Transportation, Warehousing, and Utilities | 3,700 | 3,800 | 4,000 | -100 | -2.6% | -300 | -7.5% |
| Midland | ..Information | 1,000 | 1,000 | 1,000 | 0 | 0.0% | 0 | 0.0% |
| Midland | ..Financial Activities | 3,600 | 3,600 | 3,800 | 0 | 0.0% | -200 | -5.3% |
| Midland | ..Professional and Business Services | 8,200 | 8,200 | 8,800 | 0 | 0.0% | -600 | -6.8% |
| Midland | ..Educational and Health Services | 7,600 | 7,600 | 7,400 | 0 | 0.0% | 200 | 2.7% |
| Midland | ..Leisure and Hospitality | 8,700 | 8,700 | 8,700 | 0 | 0.0% | 0 | 0.0% |
| Midland | ..Other Services | 3,200 | 3,100 | 3,200 | 100 | 3.2% | 0 | 0.0% |
| Midland | Government | 10,100 | 10,000 | 9,800 | 100 | 1.0% | 300 | 3.1% |
| Midland | .Federal Government | 600 | 600 | 500 | 0 | 0.0% | 100 | 20.0% |
| Midland | .State Government | 600 | 600 | 600 | 0 | 0.0% | 0 | 0.0% |
| Midland | .Local Government | 8,900 | 8,800 | 8,700 | 100 | 1.1% | 200 | 2.3% |

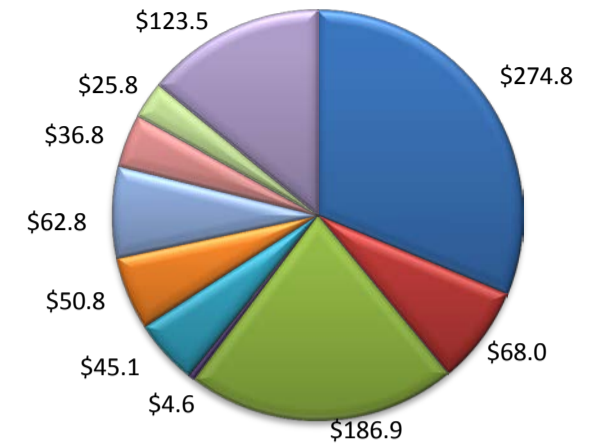
(Ector)

Industry Composition



Wages by Industry (in millions)

3rd Quarter 2016



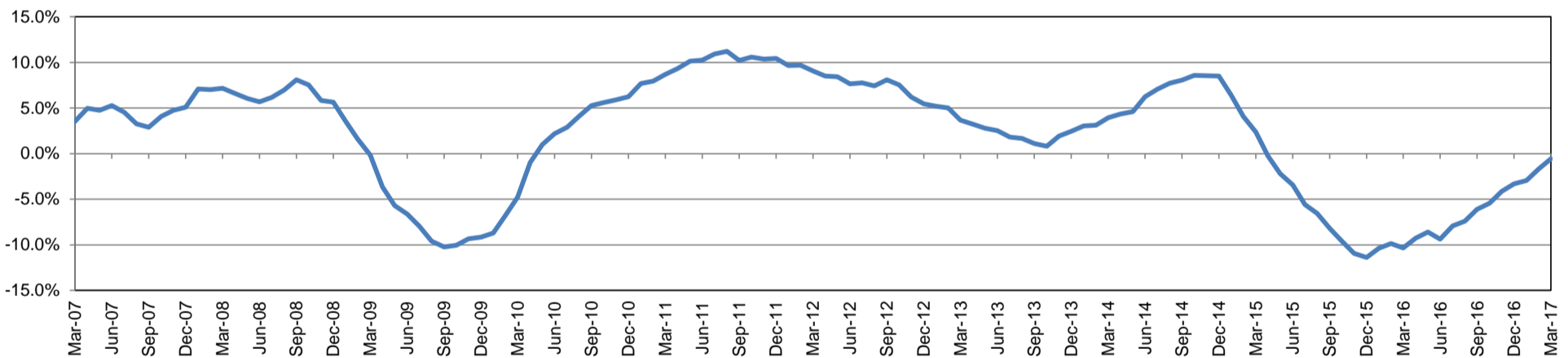
Employment by Industry

| | Mar-17 | Feb-17 | Mar-16 | Monthly Change | | Annual Change | |
|--------------------------------------|--------|--------|--------|----------------|-------|---------------|-------|
| | | | | Actual | % | Actual | % |
| Total Nonfarm | 69,800 | 70,100 | 70,200 | -300 | -0.4% | -400 | -0.6% |
| Mining, Logging, and Construction | 14,900 | 14,900 | 15,000 | 0 | 0.0% | -100 | -0.7% |
| Manufacturing | 4,100 | 4,100 | 4,300 | 0 | 0.0% | -200 | -4.7% |
| Trade, Transportation, and Utilities | 15,800 | 16,000 | 16,400 | -200 | -1.3% | -600 | -3.7% |
| Information | 400 | 400 | 400 | 0 | 0.0% | 0 | 0.0% |
| Financial Activities | 3,100 | 3,100 | 3,200 | 0 | 0.0% | -100 | -3.1% |
| Professional and Business Services | 3,600 | 3,700 | 3,900 | -100 | -2.7% | -300 | -7.7% |
| Education and Health Services | 5,500 | 5,500 | 5,300 | 0 | 0.0% | 200 | 3.8% |
| Leisure and Hospitality | 7,700 | 7,600 | 7,600 | 100 | 1.3% | 100 | 1.3% |
| Other Services | 3,500 | 3,500 | 3,600 | 0 | 0.0% | -100 | -2.8% |
| Government | 11,200 | 11,300 | 10,500 | -100 | -0.9% | 700 | 6.7% |

Industry Size Class September 2016

| Size Class | Employees per firm | Number of Firms | Employment in Size Class | % Total Employment |
|------------|--------------------|-----------------|--------------------------|--------------------|
| 9 | 1000+ | 5 | 11,335 | 16.9% |
| 8 | 500-999 | 7 | 5,402 | 8.1% |
| 7 | 250-499 | 17 | 5,742 | 8.6% |
| 6 | 100-249 | 59 | 8,386 | 12.5% |
| 5 | 50-99 | 141 | 9,508 | 14.2% |
| 4 | 20-49 | 416 | 12,581 | 18.8% |
| 3 | 10-19 | 504 | 6,847 | 10.2% |
| 2 | 5-9 | 666 | 4,444 | 6.6% |
| 1 | 1-4 | 1,194 | 2,640 | 3.9% |
| 0 | 0 | 381 | 0 | 0.0% |
| Total | | 3,390 | 66,885 | 100.0% |

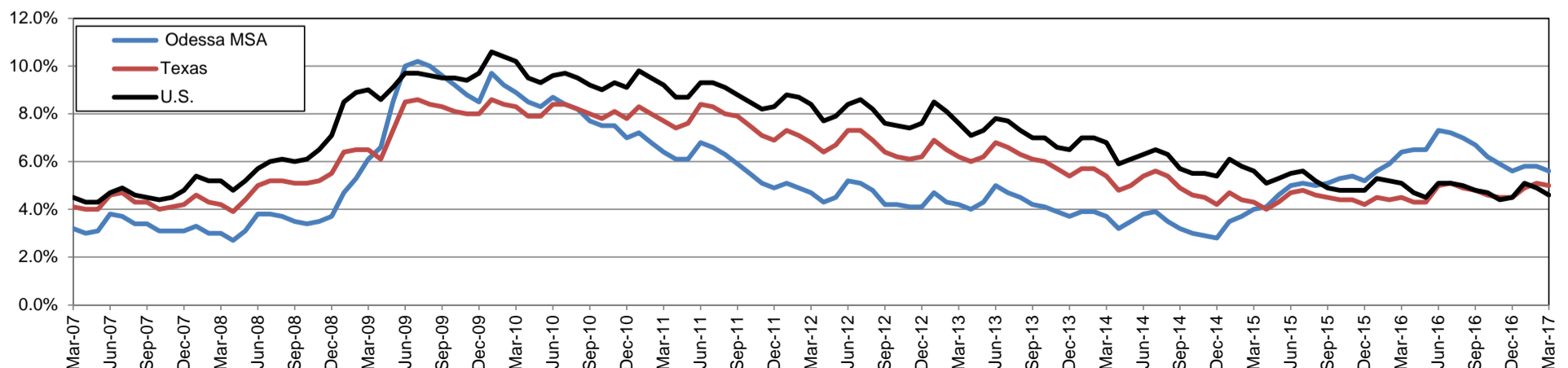
Annual Growth Rate for Total Nonagricultural Employment



Unemployment Information (all estimates in thousands)

| | Odessa MSA | | | | Texas (Actual) | | | | United States (Actual) | | | |
|--------|------------|------|--------|------|----------------|----------|--------|------|------------------------|-----------|---------|------|
| | C.L.F. | Emp. | Unemp. | Rate | C.L.F. | Emp. | Unemp. | Rate | C.L.F. | Emp. | Unemp. | Rate |
| Mar-17 | 75.2 | 71.0 | 4.2 | 5.6 | 13,513.7 | 12,838.1 | 675.6 | 5.0 | 159,912.0 | 152,628.0 | 7,284.0 | 4.6 |
| Feb-17 | 75.7 | 71.3 | 4.4 | 5.8 | 13,471.3 | 12,777.8 | 693.5 | 5.1 | 159,482.0 | 151,594.0 | 7,887.0 | 4.9 |
| Mar-16 | 76.6 | 71.7 | 4.9 | 6.4 | 13,239.7 | 12,648.9 | 590.8 | 4.5 | 158,854.0 | 150,738.0 | 8,116.0 | 5.1 |

Historical Unemployment Rates

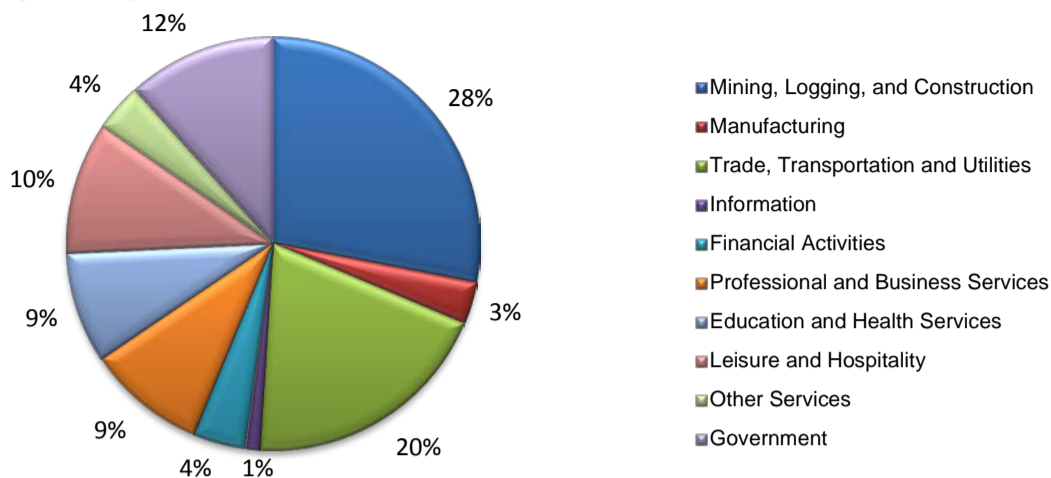


MIDLAND CES

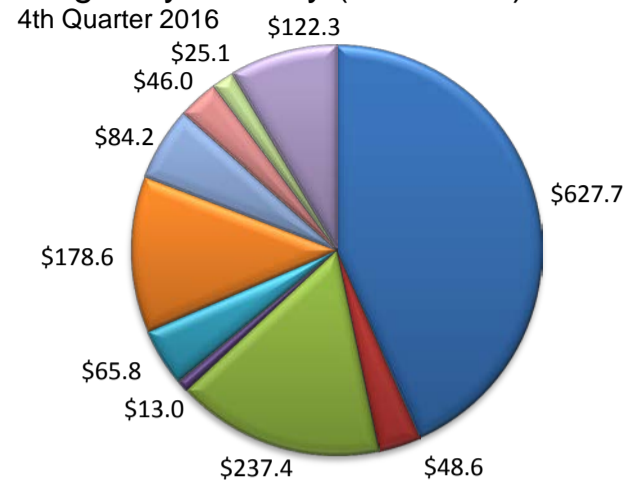
| Area Title | NAICS Industry | Mar-17 | Feb-17 | Mar-16 | Monthly Change | Monthly % | Yearly Change | Yearly % |
|------------|---|--------|--------|--------|----------------|-----------|---------------|----------|
| Midland | Total Nonfarm | 87,600 | 87,700 | 87,700 | -100 | -0.1% | -100 | -0.1% |
| Midland | Total Private | 77,300 | 77,500 | 77,700 | -200 | -0.3% | -400 | -0.5% |
| Midland | Goods Producing | 27,500 | 27,600 | 26,700 | -100 | -0.4% | 800 | 3.0% |
| Midland | .Mining, Logging, and Construction | 24,600 | 24,700 | 23,700 | -100 | -0.4% | 900 | 3.8% |
| Midland | .Manufacturing | 2,900 | 2,900 | 3,000 | 0 | 0.0% | -100 | -3.3% |
| Midland | Service Providing | 60,100 | 60,100 | 61,000 | 0 | 0.0% | -900 | -1.5% |
| Midland | .Private Service Providing | 49,800 | 49,900 | 51,000 | -100 | -0.2% | -1,200 | -2.4% |
| Midland | ..Trade, Transportation, and Utilities | 17,400 | 17,500 | 18,500 | -100 | -0.6% | -1,100 | -5.9% |
| Midland | ...Wholesale Trade | 4,800 | 4,900 | 5,100 | -100 | -2.0% | -300 | -5.9% |
| Midland | ...Retail Trade | 9,000 | 9,000 | 9,500 | 0 | 0.0% | -500 | -5.3% |
| Midland | ...Transportation, Warehousing, and Utilities | 3,600 | 3,600 | 3,900 | 0 | 0.0% | -300 | -7.7% |
| Midland | ..Information | 1,000 | 1,000 | 1,000 | 0 | 0.0% | 0 | 0.0% |
| Midland | ..Financial Activities | 3,600 | 3,600 | 3,700 | 0 | 0.0% | -100 | -2.7% |
| Midland | ..Professional and Business Services | 8,200 | 8,200 | 8,500 | 0 | 0.0% | -300 | -3.5% |
| Midland | ..Educational and Health Services | 7,600 | 7,700 | 7,400 | -100 | -1.3% | 200 | 2.7% |
| Midland | ..Leisure and Hospitality | 8,800 | 8,700 | 8,800 | 100 | 1.1% | 0 | 0.0% |
| Midland | ..Other Services | 3,200 | 3,200 | 3,100 | 0 | 0.0% | 100 | 3.2% |
| Midland | Government | 10,300 | 10,200 | 10,000 | 100 | 1.0% | 300 | 3.0% |
| Midland | .Federal Government | 600 | 600 | 600 | 0 | 0.0% | 0 | 0.0% |
| Midland | .State Government | 600 | 600 | 600 | 0 | 0.0% | 0 | 0.0% |
| Midland | .Local Government | 9,100 | 9,000 | 8,800 | 100 | 1.1% | 300 | 3.4% |

(Martin, Midland)

Industry Composition



Wages by Industry (in millions)



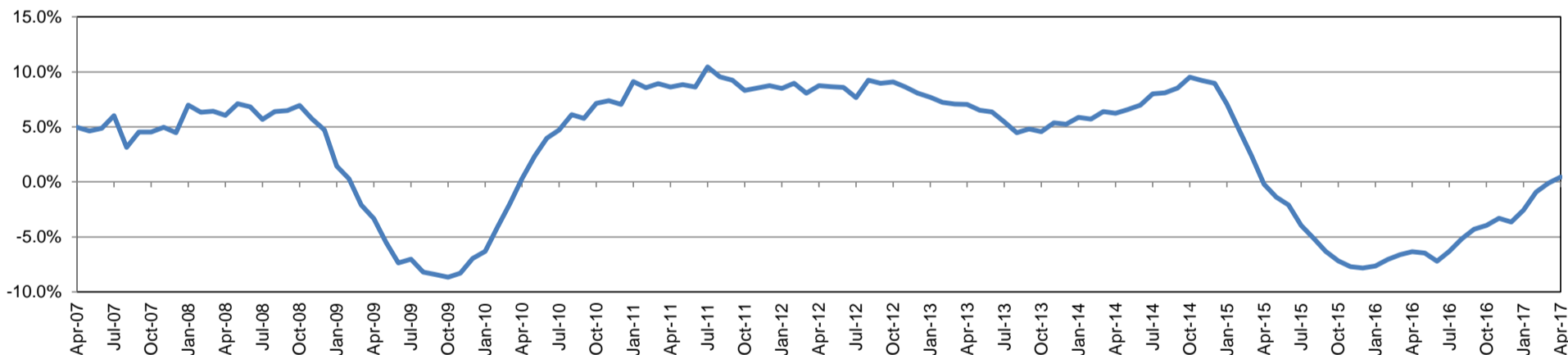
Employment by Industry

| | Apr-17 | Mar-17 | Apr-16 | Monthly Change | | Annual Change | |
|--------------------------------------|--------|--------|--------|----------------|-------|---------------|-------|
| | | | | Actual | % | Actual | % |
| Total Nonfarm | 87,800 | 87,600 | 87,400 | 200 | 0.2% | 400 | 0.5% |
| Mining, Logging, and Construction | 24,600 | 24,500 | 23,300 | 100 | 0.4% | 1,300 | 5.6% |
| Manufacturing | 2,900 | 2,900 | 3,000 | 0 | 0.0% | -100 | -3.3% |
| Trade, Transportation, and Utilities | 17,300 | 17,400 | 18,300 | -100 | -0.6% | -1,000 | -5.5% |
| Information | 1,000 | 1,000 | 1,000 | 0 | 0.0% | 0 | 0.0% |
| Financial Activities | 3,600 | 3,600 | 3,700 | 0 | 0.0% | -100 | -2.7% |
| Professional and Business Services | 8,200 | 8,200 | 8,400 | 0 | 0.0% | -200 | -2.4% |
| Education and Health Services | 7,600 | 7,700 | 7,500 | -100 | -1.3% | 100 | 1.3% |
| Leisure and Hospitality | 9,100 | 8,800 | 9,000 | 300 | 3.4% | 100 | 1.1% |
| Other Services | 3,300 | 3,200 | 3,200 | 100 | 3.1% | 100 | 3.1% |
| Government | 10,200 | 10,300 | 10,000 | -100 | -1.0% | 200 | 2.0% |

Industry Size Class

| Size Class | Employees per firm | Number of Firms | December 2016 | | |
|------------|--------------------|-----------------|--------------------------|--------------------|--------|
| | | | Employment in Size Class | % Total Employment | |
| 9 | 1000+ | 4 | 7,278 | 8.4% | |
| 8 | 500-999 | 11 | 7,949 | 9.1% | |
| 7 | 250-499 | 22 | 7,580 | 8.7% | |
| 6 | 100-249 | 116 | 16,827 | 19.3% | |
| 5 | 50-99 | 193 | 13,183 | 15.2% | |
| 4 | 20-49 | 522 | 15,815 | 18.2% | |
| 3 | 10-19 | 585 | 8,093 | 9.3% | |
| 2 | 5-9 | 864 | 5,741 | 6.6% | |
| 1 | 1-4 | 2,240 | 4,535 | 5.2% | |
| 0 | 0 | 462 | 0 | 0.0% | |
| Total | | | 5,019 | 87,001 | 100.0% |

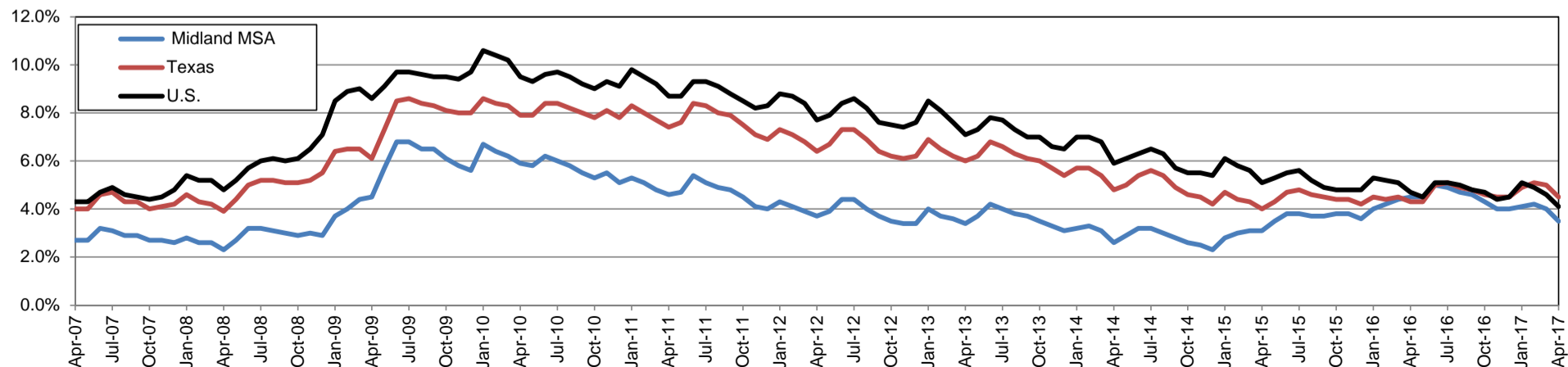
Annual Growth Rate for Total Nonagricultural Employment



Unemployment Information (all estimates in thousands)

| | Midland MSA | | | | Texas (Actual) | | | | United States (Actual) | | | |
|--------|-------------|------|--------|------|----------------|----------|--------|------|------------------------|-----------|---------|------|
| | C.L.F. | Emp. | Unemp. | Rate | C.L.F. | Emp. | Unemp. | Rate | C.L.F. | Emp. | Unemp. | Rate |
| Apr-17 | 86.9 | 83.8 | 3.0 | 3.5 | 13,506.7 | 12,895.0 | 611.7 | 4.5 | 159,817.0 | 153,262.0 | 6,555.0 | 4.1 |
| Mar-17 | 86.8 | 83.4 | 3.5 | 4.0 | 13,514.6 | 12,838.9 | 675.6 | 5.0 | 159,912.0 | 152,628.0 | 7,284.0 | 4.6 |
| Apr-16 | 87.2 | 83.3 | 3.9 | 4.5 | 13,236.9 | 12,672.9 | 564.0 | 4.3 | 158,488.0 | 151,075.0 | 7,413.0 | 4.7 |

Historical Unemployment Rates

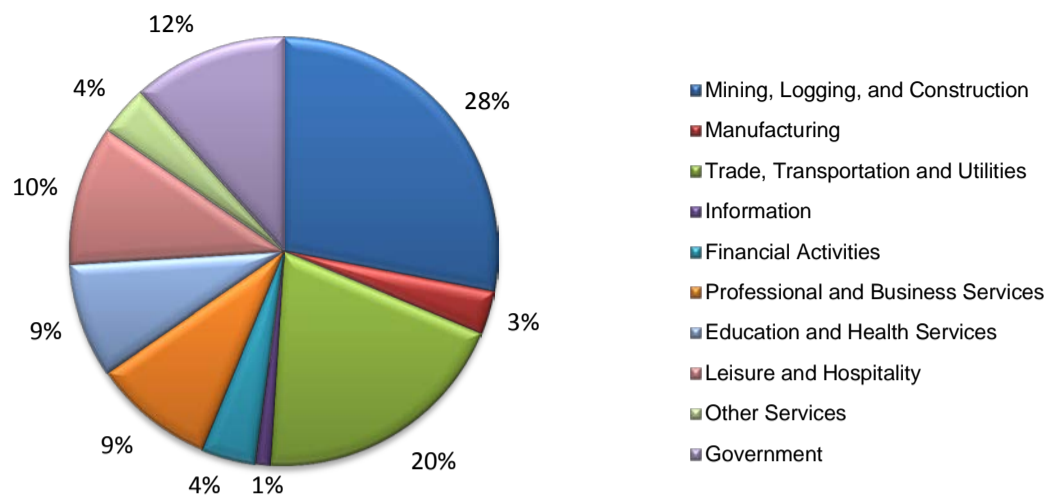


MIDLAND CES

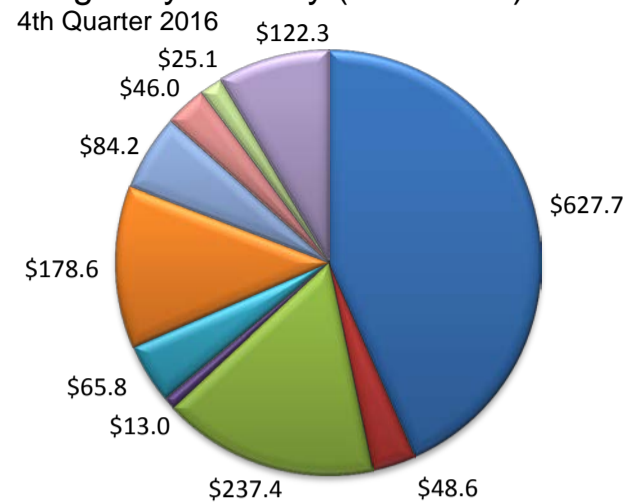
| Area | Series Title | Apr-17 | Mar-17 | Apr-16 | Monthly Change | Monthly % | Yearly Change | Yearly % |
|---------|---|--------|--------|--------|----------------|-----------|---------------|----------|
| Midland | Total Nonfarm | 87,800 | 87,600 | 87,400 | 200 | 0.2% | 400 | 0.5% |
| Midland | .Total Private | 77,600 | 77,300 | 77,400 | 300 | 0.4% | 200 | 0.3% |
| Midland | .Goods Producing | 27,500 | 27,400 | 26,300 | 100 | 0.4% | 1,200 | 4.6% |
| Midland | ..Mining, Logging, and Construction | 24,600 | 24,500 | 23,300 | 100 | 0.4% | 1,300 | 5.6% |
| Midland | ..Manufacturing | 2,900 | 2,900 | 3,000 | 0 | 0.0% | -100 | -3.3% |
| Midland | .Service Providing | 60,300 | 60,200 | 61,100 | 100 | 0.2% | -800 | -1.3% |
| Midland | .Private Service Providing | 50,100 | 49,900 | 51,100 | 200 | 0.4% | -1,000 | -2.0% |
| Midland | ..Trade, Transportation, and Utilities | 17,300 | 17,400 | 18,300 | -100 | -0.6% | -1,000 | -5.5% |
| Midland | ...Wholesale Trade | 4,800 | 4,800 | 4,900 | 0 | 0.0% | -100 | -2.0% |
| Midland | ...Retail Trade | 9,000 | 9,000 | 9,600 | 0 | 0.0% | -600 | -6.3% |
| Midland | ...Transportation, Warehousing, and Utilities | 3,500 | 3,600 | 3,800 | -100 | -2.8% | -300 | -7.9% |
| Midland | ..Information | 1,000 | 1,000 | 1,000 | 0 | 0.0% | 0 | 0.0% |
| Midland | ..Financial Activities | 3,600 | 3,600 | 3,700 | 0 | 0.0% | -100 | -2.7% |
| Midland | ..Professional and Business Services | 8,200 | 8,200 | 8,400 | 0 | 0.0% | -200 | -2.4% |
| Midland | ..Educational and Health Services | 7,600 | 7,700 | 7,500 | -100 | -1.3% | 100 | 1.3% |
| Midland | ..Leisure and Hospitality | 9,100 | 8,800 | 9,000 | 300 | 3.4% | 100 | 1.1% |
| Midland | ..Other Services | 3,300 | 3,200 | 3,200 | 100 | 3.1% | 100 | 3.1% |
| Midland | ..Government | 10,200 | 10,300 | 10,000 | -100 | -1.0% | 200 | 2.0% |
| Midland | ...Federal Government | 600 | 600 | 600 | 0 | 0.0% | 0 | 0.0% |
| Midland | ...State Government | 600 | 600 | 600 | 0 | 0.0% | 0 | 0.0% |
| Midland | ...Local Government | 9,000 | 9,100 | 8,800 | -100 | -1.1% | 200 | 2.3% |

(Martin, Midland)

Industry Composition



Wages by Industry (in millions)



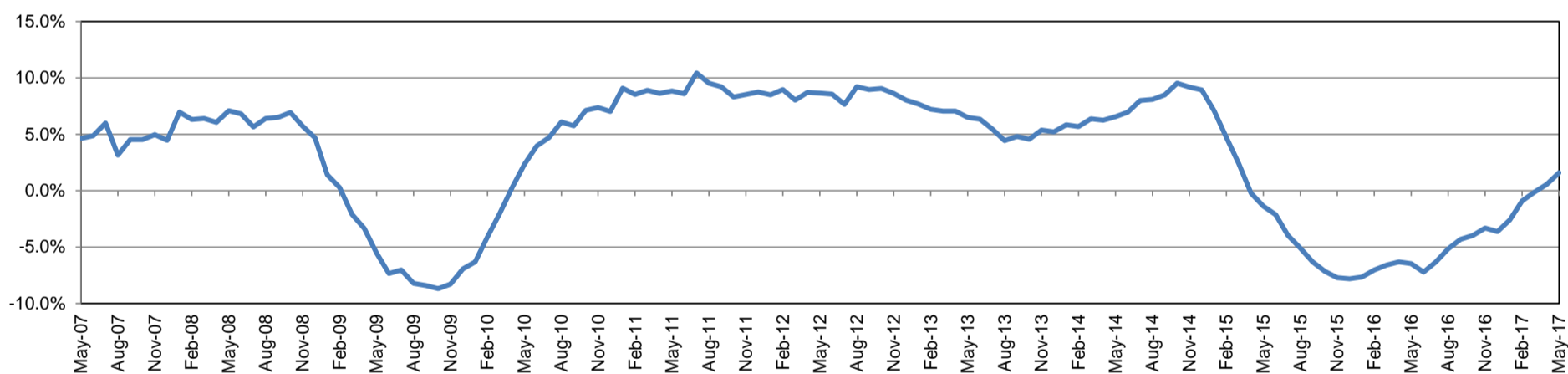
Employment by Industry

| | May-17 | Apr-17 | May-16 | Monthly Change | | Annual Change | |
|--------------------------------------|--------|--------|--------|----------------|-------|---------------|-------|
| | | | | Actual | % | Actual | % |
| Total Nonfarm | 88,200 | 87,900 | 86,800 | 300 | 0.3% | 1,400 | 1.6% |
| Mining, Logging, and Construction | 24,700 | 24,600 | 22,800 | 100 | 0.4% | 1,900 | 8.3% |
| Manufacturing | 2,900 | 3,000 | 2,900 | -100 | -3.3% | 0 | 0.0% |
| Trade, Transportation, and Utilities | 17,400 | 17,400 | 18,100 | 0 | 0.0% | -700 | -3.9% |
| Information | 1,000 | 1,000 | 1,000 | 0 | 0.0% | 0 | 0.0% |
| Financial Activities | 3,600 | 3,600 | 3,700 | 0 | 0.0% | -100 | -2.7% |
| Professional and Business Service: | 8,100 | 8,100 | 8,400 | 0 | 0.0% | -300 | -3.6% |
| Education and Health Services | 7,600 | 7,600 | 7,500 | 0 | 0.0% | 100 | 1.3% |
| Leisure and Hospitality | 9,300 | 9,100 | 9,200 | 200 | 2.2% | 100 | 1.1% |
| Other Services | 3,300 | 3,300 | 3,200 | 0 | 0.0% | 100 | 3.1% |
| Government | 10,300 | 10,200 | 10,000 | 100 | 1.0% | 300 | 3.0% |

Industry Size Class

| Size Class | Employees per firm | Number of Firms | December 2016 | |
|------------|--------------------|-----------------|--------------------------|--------------------|
| | | | Employment in Size Class | % Total Employment |
| 9 | 1000+ | 4 | 7,278 | 8.4% |
| 8 | 500-999 | 11 | 7,949 | 9.1% |
| 7 | 250-499 | 22 | 7,580 | 8.7% |
| 6 | 100-249 | 116 | 16,827 | 19.3% |
| 5 | 50-99 | 193 | 13,183 | 15.2% |
| 4 | 20-49 | 522 | 15,815 | 18.2% |
| 3 | 10-19 | 585 | 8,093 | 9.3% |
| 2 | 5-9 | 864 | 5,741 | 6.6% |
| 1 | 1-4 | 2,240 | 4,535 | 5.2% |
| 0 | 0 | 462 | 0 | 0.0% |
| Total | | 5,019 | 87,001 | 100.0% |

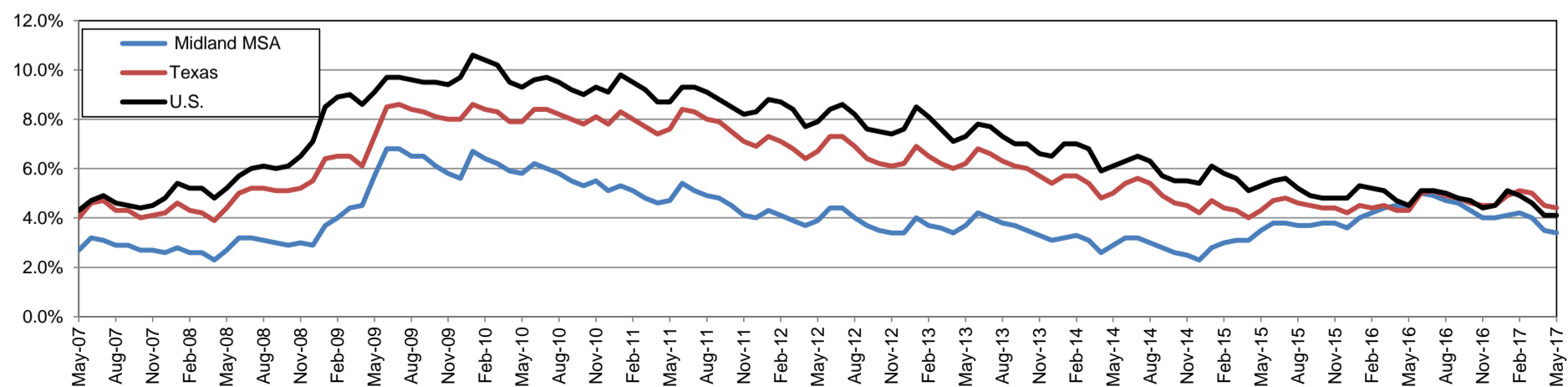
Annual Growth Rate for Total Nonagricultural Employment



Unemployment Information (all estimates in thousands)

| | Midland MSA | | | | Texas (Actual) | | | | United States (Actual) | | | |
|--------|-------------|------|--------|------|----------------|----------|--------|------|------------------------|-----------|---------|------|
| | C.L.F. | Emp. | Unemp. | Rate | C.L.F. | Emp. | Unemp. | Rate | C.L.F. | Emp. | Unemp. | Rate |
| May-17 | 86.4 | 83.5 | 2.9 | 3.4 | 13,449.2 | 12,857.2 | 592.0 | 4.4 | 159,979.0 | 153,407.0 | 6,572.0 | 4.1 |
| Apr-17 | 86.8 | 83.8 | 3.0 | 3.5 | 13,506.9 | 12,895.1 | 611.7 | 4.5 | 159,817.0 | 153,262.0 | 6,555.0 | 4.1 |
| May-16 | 86.5 | 82.6 | 3.9 | 4.5 | 13,245.5 | 12,679.1 | 566.4 | 4.3 | 158,800.0 | 151,594.0 | 7,207.0 | 4.5 |

Historical Unemployment Rates

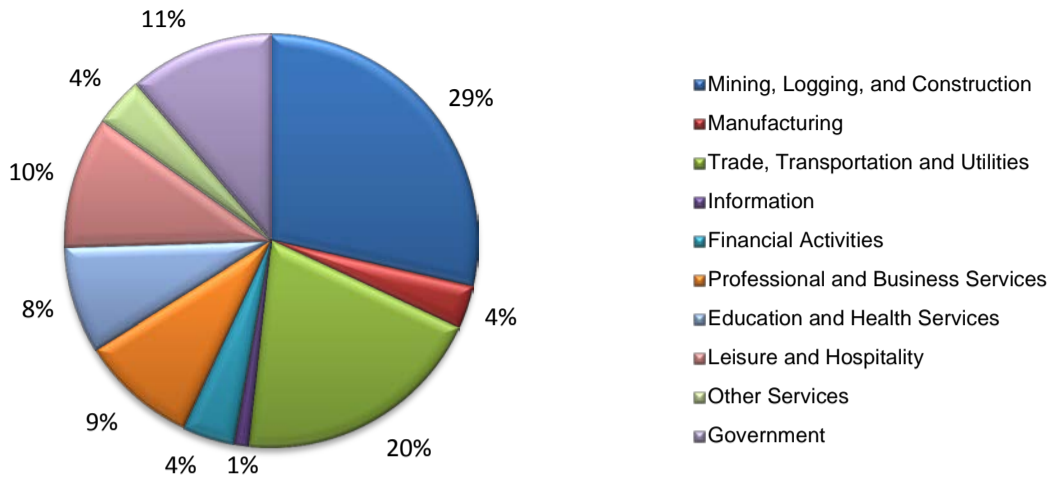


MIDLAND CES

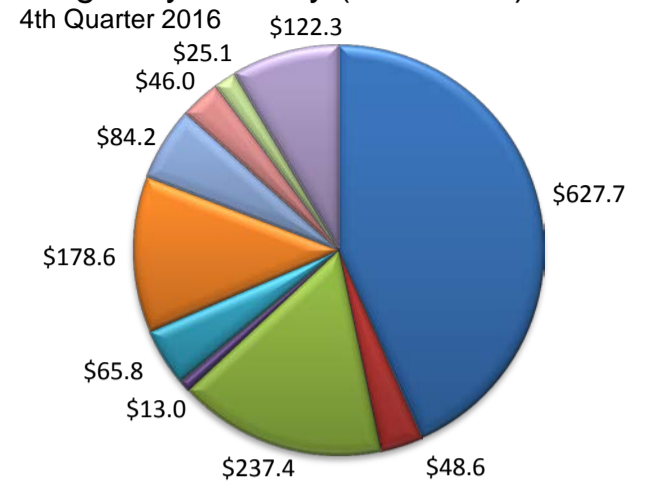
| Area | Series Title | May-17 | Apr-17 | May-17 | Monthly Change | Monthly % | Yearly Change | Yearly % |
|---------|---|--------|--------|--------|----------------|-----------|---------------|----------|
| Midland | Total Nonfarm | 88,200 | 87,900 | 86,800 | 300 | 0.3% | 1,400 | 1.6% |
| Midland | .Total Private | 77,900 | 77,700 | 76,800 | 200 | 0.3% | 1,100 | 1.4% |
| Midland | .Goods Producing | 27,600 | 27,600 | 25,700 | 0 | 0.0% | 1,900 | 7.4% |
| Midland | ..Mining, Logging, and Construction | 24,700 | 24,600 | 22,800 | 100 | 0.4% | 1,900 | 8.3% |
| Midland | ..Manufacturing | 2,900 | 3,000 | 2,900 | -100 | -3.3% | 0 | 0.0% |
| Midland | .Service Providing | 60,600 | 60,300 | 61,100 | 300 | 0.5% | -500 | -0.8% |
| Midland | .Private Service Providing | 50,300 | 50,100 | 51,100 | 200 | 0.4% | -800 | -1.6% |
| Midland | ..Trade, Transportation, and Utilities | 17,400 | 17,400 | 18,100 | 0 | 0.0% | -700 | -3.9% |
| Midland | ...Wholesale Trade | 4,800 | 4,800 | 4,800 | 0 | 0.0% | 0 | 0.0% |
| Midland | ...Retail Trade | 9,100 | 9,000 | 9,500 | 100 | 1.1% | -400 | -4.2% |
| Midland | ...Transportation, Warehousing, and Utilities | 3,500 | 3,600 | 3,800 | -100 | -2.8% | -300 | -7.9% |
| Midland | ..Information | 1,000 | 1,000 | 1,000 | 0 | 0.0% | 0 | 0.0% |
| Midland | ..Financial Activities | 3,600 | 3,600 | 3,700 | 0 | 0.0% | -100 | -2.7% |
| Midland | ..Professional and Business Services | 8,100 | 8,100 | 8,400 | 0 | 0.0% | -300 | -3.6% |
| Midland | ..Educational and Health Services | 7,600 | 7,600 | 7,500 | 0 | 0.0% | 100 | 1.3% |
| Midland | ..Leisure and Hospitality | 9,300 | 9,100 | 9,200 | 200 | 2.2% | 100 | 1.1% |
| Midland | ..Other Services | 3,300 | 3,300 | 3,200 | 0 | 0.0% | 100 | 3.1% |
| Midland | ..Government | 10,300 | 10,200 | 10,000 | 100 | 1.0% | 300 | 3.0% |
| Midland | ...Federal Government | 600 | 600 | 600 | 0 | 0.0% | 0 | 0.0% |
| Midland | ...State Government | 600 | 600 | 600 | 0 | 0.0% | 0 | 0.0% |
| Midland | ...Local Government | 9,100 | 9,000 | 8,800 | 100 | 1.1% | 300 | 3.4% |

(Martin, Midland)

Industry Composition



Wages by Industry (in millions)



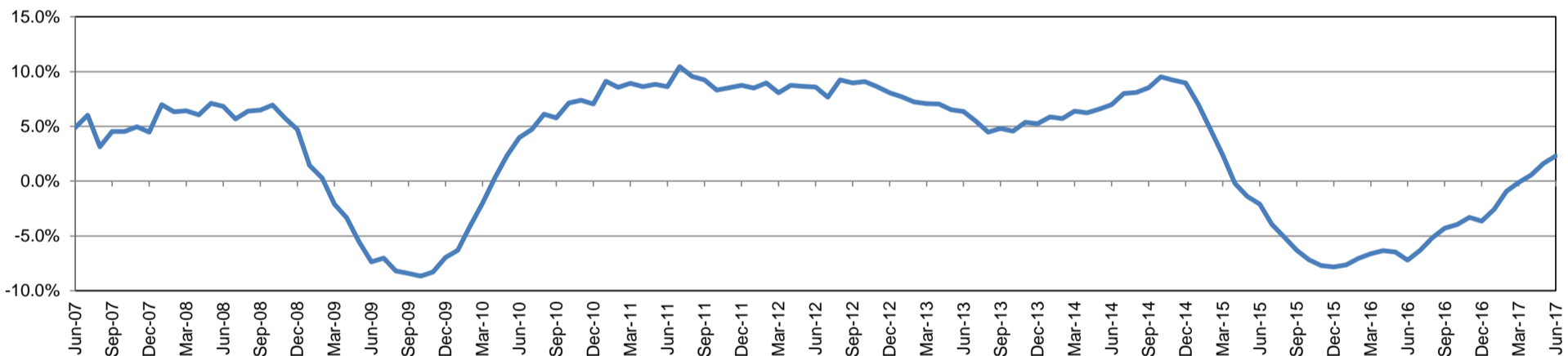
Employment by Industry

| | Jun-17 | May-17 | Jun-16 | Monthly Change | | Annual Change | |
|--------------------------------------|--------|--------|--------|----------------|-------|---------------|-------|
| | | | | Actual | % | Actual | % |
| Total Nonfarm | 88,300 | 88,200 | 86,300 | 100 | 0.1% | 2,000 | 2.3% |
| Mining, Logging, and Construction | 25,200 | 24,700 | 22,900 | 500 | 2.0% | 2,300 | 10.0% |
| Manufacturing | 3,000 | 3,000 | 2,900 | 0 | 0.0% | 100 | 3.5% |
| Trade, Transportation, and Utilities | 17,500 | 17,400 | 17,800 | 100 | 0.6% | -300 | -1.7% |
| Information | 1,000 | 1,000 | 1,000 | 0 | 0.0% | 0 | 0.0% |
| Financial Activities | 3,600 | 3,600 | 3,700 | 0 | 0.0% | -100 | -2.7% |
| Professional and Business Services | 8,100 | 8,100 | 8,300 | 0 | 0.0% | -200 | -2.4% |
| Education and Health Services | 7,400 | 7,500 | 7,300 | -100 | -1.3% | 100 | 1.4% |
| Leisure and Hospitality | 9,100 | 9,300 | 9,400 | -200 | -2.2% | -300 | -3.2% |
| Other Services | 3,400 | 3,300 | 3,300 | 100 | 3.0% | 100 | 3.0% |
| Government | 10,000 | 10,300 | 9,700 | -300 | -2.9% | 300 | 3.1% |

Industry Size Class

| Size Class | Employees per firm | Number of Firms | December 2016 | | |
|------------|--------------------|-----------------|--------------------------|--------------------|--------|
| | | | Employment in Size Class | % Total Employment | |
| 9 | 1000+ | 4 | 7,278 | 8.4% | |
| 8 | 500-999 | 11 | 7,949 | 9.1% | |
| 7 | 250-499 | 22 | 7,580 | 8.7% | |
| 6 | 100-249 | 116 | 16,827 | 19.3% | |
| 5 | 50-99 | 193 | 13,183 | 15.2% | |
| 4 | 20-49 | 522 | 15,815 | 18.2% | |
| 3 | 10-19 | 585 | 8,093 | 9.3% | |
| 2 | 5-9 | 864 | 5,741 | 6.6% | |
| 1 | 1-4 | 2,240 | 4,535 | 5.2% | |
| 0 | 0 | 462 | 0 | 0.0% | |
| Total | | | 5,019 | 87,001 | 100.0% |

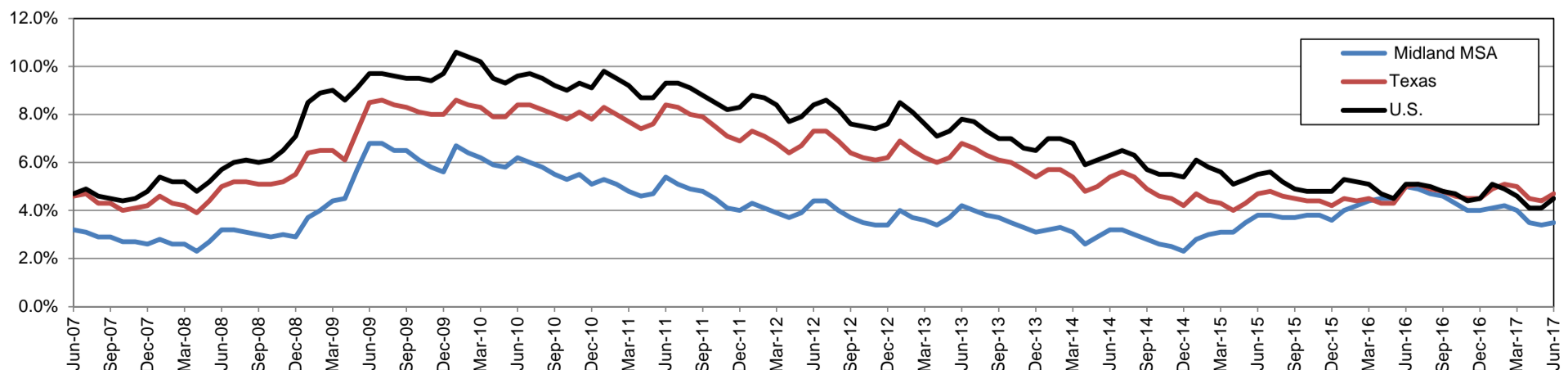
Annual Growth Rate for Total Nonagricultural Employment



Unemployment Information (all estimates in thousands)

| | Midland MSA | | | | Texas (Actual) | | | | United States (Actual) | | | |
|--------|-------------|------|--------|------|----------------|----------|--------|------|------------------------|-----------|---------|------|
| | C.L.F. | Emp. | Unemp. | Rate | C.L.F. | Emp. | Unemp. | Rate | C.L.F. | Emp. | Unemp. | Rate |
| Jun-17 | 86.4 | 83.4 | 3.0 | 3.5 | 13,464.3 | 12,833.3 | 631.1 | 4.7 | 161,337.0 | 154,086.0 | 7,250.0 | 4.5 |
| May-17 | 86.4 | 83.5 | 2.9 | 3.4 | 13,450.0 | 12,858.0 | 592.0 | 4.4 | 159,979.0 | 153,407.0 | 6,572.0 | 4.1 |
| Jun-16 | 86.6 | 82.3 | 4.3 | 5.0 | 13,319.7 | 12,656.7 | 662.9 | 5.0 | 160,135.0 | 151,990.0 | 8,144.0 | 5.1 |

Historical Unemployment Rates

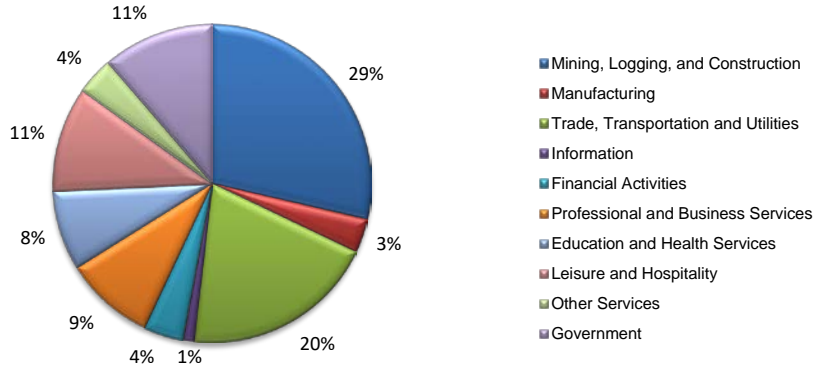


MIDLAND CES

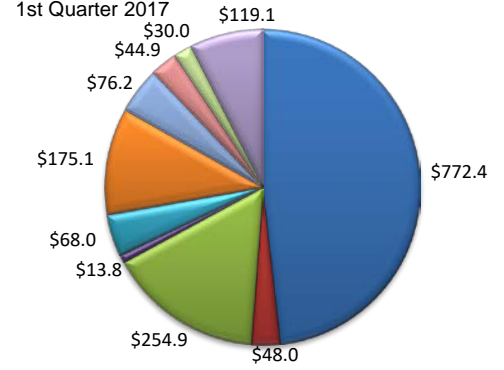
| Area | Series Title | Jun-17 | May-17 | Jun-17 | Monthly Change | Monthly % | Yearly Change | Yearly % |
|---------|---|--------|--------|--------|----------------|-----------|---------------|----------|
| Midland | Total Nonfarm | 88,300 | 88,200 | 86,300 | 100 | 0.1% | 2,000 | 2.3% |
| Midland | .Total Private | 78,300 | 77,900 | 76,600 | 400 | 0.5% | 1,700 | 2.2% |
| Midland | .Goods Producing | 28,200 | 27,700 | 25,800 | 500 | 1.8% | 2,400 | 9.3% |
| Midland | ..Mining, Logging and Construction | 25,200 | 24,700 | 22,900 | 500 | 2.0% | 2,300 | 10.0% |
| Midland | ..Manufacturing | 3,000 | 3,000 | 2,900 | 0 | 0.0% | 100 | 3.4% |
| Midland | .Service-Providing | 60,100 | 60,500 | 60,500 | -400 | -0.7% | -400 | -0.7% |
| Midland | .Private Service Providing | 50,100 | 50,200 | 50,800 | -100 | -0.2% | -700 | -1.4% |
| Midland | ..Trade, Transportation, and Utilities | 17,500 | 17,400 | 17,800 | 100 | 0.6% | -300 | -1.7% |
| Midland | ...Wholesale Trade | 4,800 | 4,800 | 4,700 | 0 | 0.0% | 100 | 2.1% |
| Midland | ...Retail Trade | 9,100 | 9,100 | 9,300 | 0 | 0.0% | -200 | -2.2% |
| Midland | ...Transportation, Warehousing, and Utilities | 3,600 | 3,500 | 3,800 | 100 | 2.9% | -200 | -5.3% |
| Midland | ..Information | 1,000 | 1,000 | 1,000 | 0 | 0.0% | 0 | 0.0% |
| Midland | ..Financial Activities | 3,600 | 3,600 | 3,700 | 0 | 0.0% | -100 | -2.7% |
| Midland | ..Professional and Business Services | 8,100 | 8,100 | 8,300 | 0 | 0.0% | -200 | -2.4% |
| Midland | ..Education and Health Services | 7,400 | 7,500 | 7,300 | -100 | -1.3% | 100 | 1.4% |
| Midland | ..Leisure and Hospitality | 9,100 | 9,300 | 9,400 | -200 | -2.2% | -300 | -3.2% |
| Midland | ..Other Services | 3,400 | 3,300 | 3,300 | 100 | 3.0% | 100 | 3.0% |
| Midland | ..Government | 10,000 | 10,300 | 9,700 | -300 | -2.9% | 300 | 3.1% |
| Midland | ...Federal Government | 600 | 600 | 600 | 0 | 0.0% | 0 | 0.0% |
| Midland | ...State Government | 600 | 600 | 600 | 0 | 0.0% | 0 | 0.0% |
| Midland | ...Local Government | 8,800 | 9,100 | 8,500 | -300 | -3.3% | 300 | 3.5% |

(Martin, Midland)

Industry Composition



Wages by Industry (in millions)



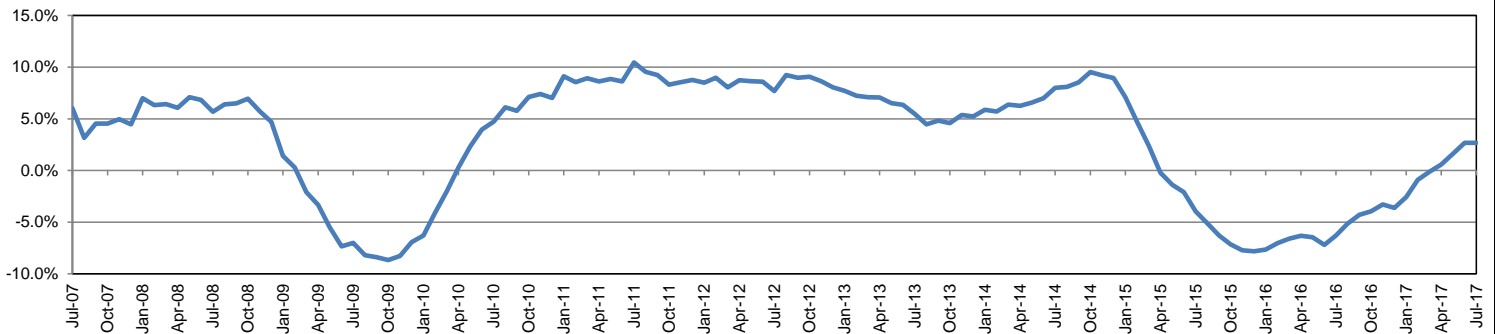
Employment by Industry

| | Jul-17 | Jun-17 | Jul-16 | Monthly Change | | Annual Change | |
|--------------------------------------|---------------|---------------|---------------|----------------|-------------|---------------|-------------|
| | | | | Actual | % | Actual | % |
| | | | | | | | |
| Total Nonfarm | 88,600 | 88,600 | 86,300 | 0 | 0.0% | 2,300 | 2.7% |
| Mining, Logging, and Construction | 25,300 | 25,100 | 23,200 | 200 | 0.8% | 2,100 | 9.1% |
| Manufacturing | 3,100 | 3,100 | 2,800 | 0 | 0.0% | 300 | 10.7% |
| Trade, Transportation, and Utilities | 17,500 | 17,500 | 17,700 | 0 | 0.0% | -200 | -1.1% |
| Information | 1,000 | 1,000 | 1,000 | 0 | 0.0% | 0 | 0.0% |
| Financial Activities | 3,600 | 3,600 | 3,600 | 0 | 0.0% | 0 | 0.0% |
| Professional and Business Services | 8,100 | 8,100 | 8,400 | 0 | 0.0% | -300 | -3.6% |
| Education and Health Services | 7,200 | 7,500 | 7,400 | -300 | -4.0% | -200 | -2.7% |
| Leisure and Hospitality | 9,400 | 9,300 | 9,200 | 100 | 1.1% | 200 | 2.2% |
| Other Services | 3,400 | 3,400 | 3,200 | 0 | 0.0% | 200 | 6.3% |
| Government | 10,000 | 10,000 | 9,800 | 0 | 0.0% | 200 | 2.0% |

Industry Size Class

| January 2017 | | | | |
|--------------|--------------------|-----------------|--------------------------|--------------------|
| Size Class | Employees per firm | Number of Firms | Employment in Size Class | % Total Employment |
| 9 | 1000+ | 4 | 7,206 | 8.2% |
| 8 | 500-999 | 13 | 8,865 | 10.1% |
| 7 | 250-499 | 21 | 6,851 | 7.8% |
| 6 | 100-249 | 110 | 16,288 | 18.6% |
| 5 | 50-99 | 200 | 13,707 | 15.7% |
| 4 | 20-49 | 531 | 16,049 | 18.3% |
| 3 | 10-19 | 619 | 8,534 | 9.8% |
| 2 | 5-9 | 850 | 5,577 | 6.4% |
| 1 | 1-4 | 2,193 | 4,434 | 5.1% |
| 0 | 0 | 500 | 0 | 0.0% |
| Total | | 5,041 | 87,511 | 100.0% |

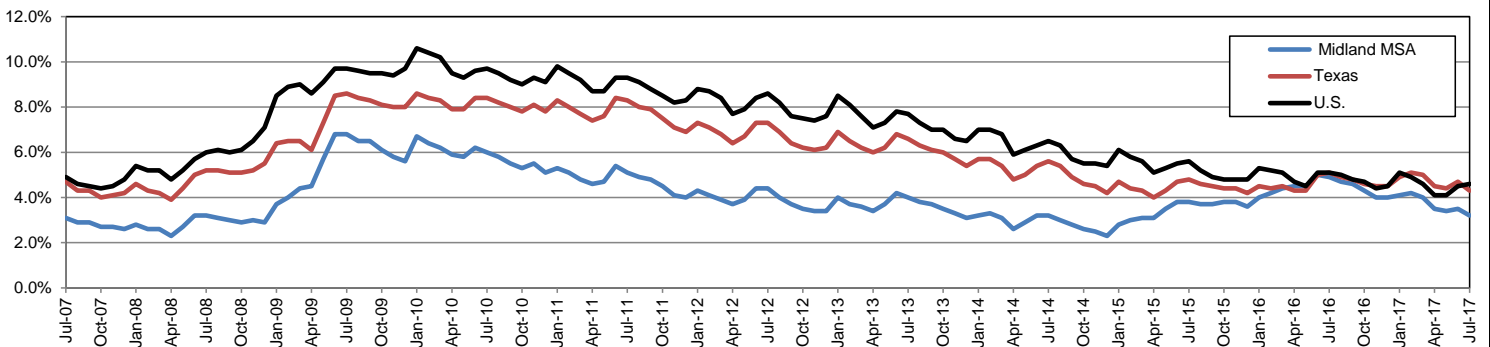
Annual Growth Rate for Total Nonagricultural Employment



Unemployment Information (all estimates in thousands)

| | Midland MSA | | | | Texas (Actual) | | | | United States (Actual) | | | |
|--------|-------------|------|--------|------|----------------|----------|--------|------|------------------------|-----------|---------|------|
| | C.L.F. | Emp. | Unemp. | Rate | C.L.F. | Emp. | Unemp. | Rate | C.L.F. | Emp. | Unemp. | Rate |
| Jul-17 | 86.9 | 84.1 | 2.8 | 3.2 | 13,433.4 | 12,849.5 | 584.0 | 4.3 | 161,911.0 | 154,470.0 | 7,441.0 | 4.6 |
| Jun-17 | 86.7 | 83.7 | 3.0 | 3.5 | 13,462.3 | 12,831.1 | 631.1 | 4.7 | 161,337.0 | 154,086.0 | 7,250.0 | 4.5 |
| Jul-16 | 87.2 | 82.9 | 4.3 | 4.9 | 13,356.8 | 12,681.9 | 675.0 | 5.1 | 160,705.0 | 152,437.0 | 8,267.0 | 5.1 |

Historical Unemployment Rates

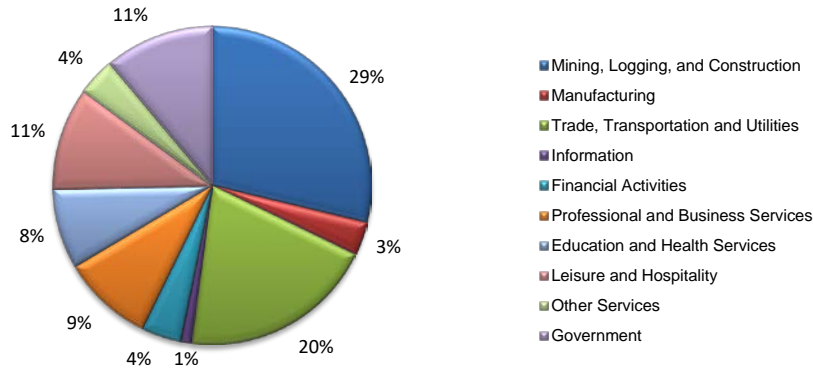


MIDLAND CES

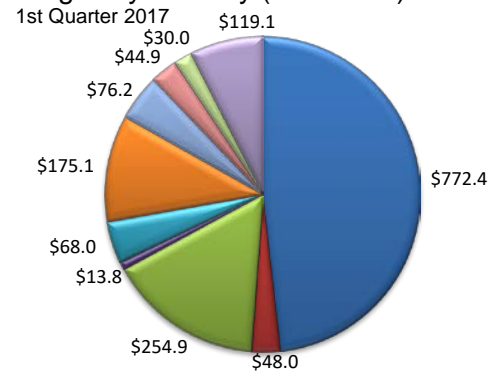
| Area | Series Title | Jul-17 | Jun-17 | Jul-17 | Monthly Change | Monthly % | Yearly Change | Yearly % |
|---------|---|--------|--------|--------|----------------|-----------|---------------|----------|
| Midland | Total Nonfarm | 88,600 | 88,600 | 86,300 | 0 | 0.0% | 2,300 | 2.7% |
| Midland | .Total Private | 78,600 | 78,600 | 76,500 | 0 | 0.0% | 2,100 | 2.7% |
| Midland | .Goods Producing | 28,400 | 28,200 | 26,000 | 200 | 0.7% | 2,400 | 9.2% |
| Midland | ..Mining, Logging and Construction | 25,300 | 25,100 | 23,200 | 200 | 0.8% | 2,100 | 9.1% |
| Midland | ..Manufacturing | 3,100 | 3,100 | 2,800 | 0 | 0.0% | 300 | 10.7% |
| Midland | .Service-Providing | 60,200 | 60,400 | 60,300 | -200 | -0.3% | -100 | -0.2% |
| Midland | .Private Service Providing | 50,200 | 50,400 | 50,500 | -200 | -0.4% | -300 | -0.6% |
| Midland | ..Trade, Transportation, and Utilities | 17,500 | 17,500 | 17,700 | 0 | 0.0% | -200 | -1.1% |
| Midland | ...Wholesale Trade | 4,800 | 4,800 | 4,700 | 0 | 0.0% | 100 | 2.1% |
| Midland | ...Retail Trade | 9,100 | 9,100 | 9,300 | 0 | 0.0% | -200 | -2.2% |
| Midland | ...Transportation, Warehousing, and Utilities | 3,600 | 3,600 | 3,700 | 0 | 0.0% | -100 | -2.7% |
| Midland | ..Information | 1,000 | 1,000 | 1,000 | 0 | 0.0% | 0 | 0.0% |
| Midland | ..Financial Activities | 3,600 | 3,600 | 3,600 | 0 | 0.0% | 0 | 0.0% |
| Midland | ..Professional and Business Services | 8,100 | 8,100 | 8,400 | 0 | 0.0% | -300 | -3.6% |
| Midland | ..Education and Health Services | 7,200 | 7,500 | 7,400 | -300 | -4.0% | -200 | -2.7% |
| Midland | ..Leisure and Hospitality | 9,400 | 9,300 | 9,200 | 100 | 1.1% | 200 | 2.2% |
| Midland | ..Other Services | 3,400 | 3,400 | 3,200 | 0 | 0.0% | 200 | 6.3% |
| Midland | ..Government | 10,000 | 10,000 | 9,800 | 0 | 0.0% | 200 | 2.0% |
| Midland | ...Federal Government | 600 | 600 | 600 | 0 | 0.0% | 0 | 0.0% |
| Midland | ...State Government | 600 | 600 | 600 | 0 | 0.0% | 0 | 0.0% |
| Midland | ...Local Government | 8,800 | 8,800 | 8,600 | 0 | 0.0% | 200 | 2.3% |

(Martin, Midland)

Industry Composition



Wages by Industry (in millions)



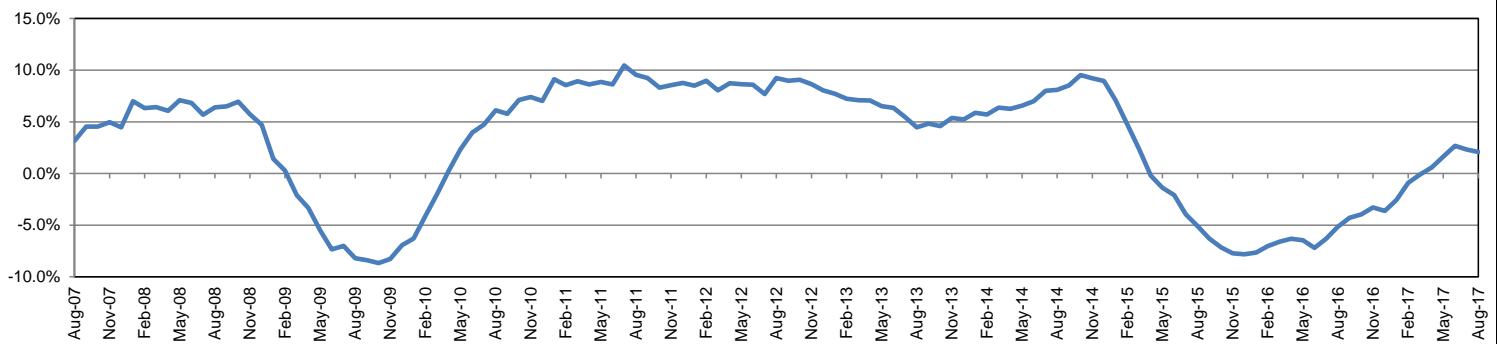
Employment by Industry

| | Aug-17 | Jul-17 | Aug-16 | Monthly Change | | Annual Change | |
|--------------------------------------|--------|--------|--------|----------------|-------|---------------|-------|
| | | | | Actual | % | Actual | % |
| | | | | | | | |
| Total Nonfarm | 88,400 | 88,300 | 86,600 | 100 | 0.1% | 1,800 | 2.1% |
| Mining, Logging, and Construction | 25,400 | 25,300 | 23,500 | 100 | 0.4% | 1,900 | 8.1% |
| Manufacturing | 3,000 | 3,000 | 2,900 | 0 | 0.0% | 100 | 3.4% |
| Trade, Transportation, and Utilities | 17,600 | 17,500 | 17,800 | 100 | 0.6% | -200 | -1.1% |
| Information | 1,000 | 1,000 | 1,000 | 0 | 0.0% | 0 | 0.0% |
| Financial Activities | 3,600 | 3,600 | 3,600 | 0 | 0.0% | 0 | 0.0% |
| Professional and Business Services | 8,200 | 8,100 | 8,300 | 100 | 1.2% | -100 | -1.2% |
| Education and Health Services | 7,200 | 7,200 | 7,500 | 0 | 0.0% | -300 | -4.0% |
| Leisure and Hospitality | 9,200 | 9,200 | 9,300 | 0 | 0.0% | -100 | -1.1% |
| Other Services | 3,400 | 3,400 | 3,200 | 0 | 0.0% | 200 | 6.3% |
| Government | 9,800 | 10,000 | 9,500 | -200 | -2.0% | 300 | 3.2% |

Industry Size Class

| Size Class | Employees per firm | Number of Firms | January 2017 | |
|------------|--------------------|-----------------|--------------------------|--------------------|
| | | | Employment in Size Class | % Total Employment |
| 9 | 1000+ | 4 | 7,206 | 8.2% |
| 8 | 500-999 | 13 | 8,865 | 10.1% |
| 7 | 250-499 | 21 | 6,851 | 7.8% |
| 6 | 100-249 | 110 | 16,288 | 18.6% |
| 5 | 50-99 | 200 | 13,707 | 15.7% |
| 4 | 20-49 | 531 | 16,049 | 18.3% |
| 3 | 10-19 | 619 | 8,534 | 9.8% |
| 2 | 5-9 | 850 | 5,577 | 6.4% |
| 1 | 1-4 | 2,193 | 4,434 | 5.1% |
| 0 | 0 | 500 | 0 | 0.0% |
| Total | | 5,041 | 87,511 | 100.0% |

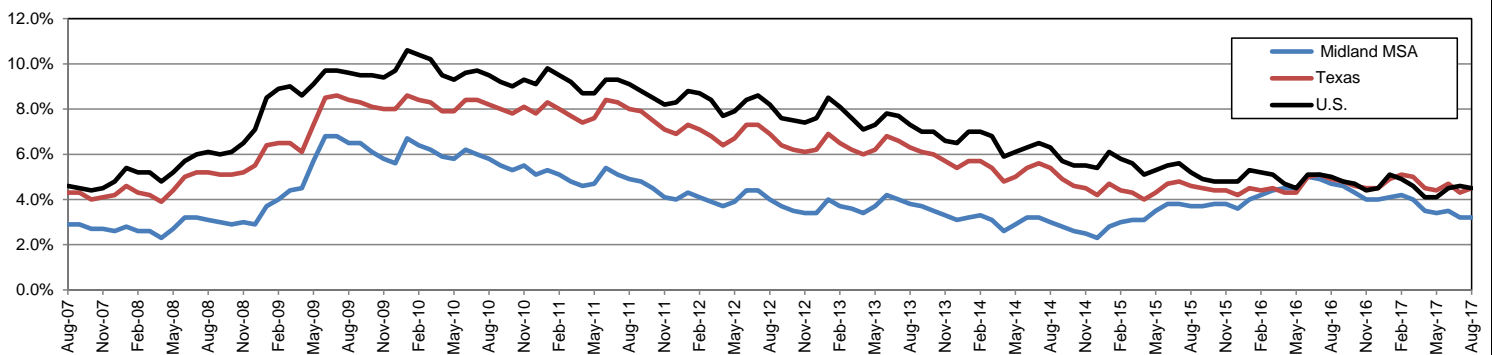
Annual Growth Rate for Total Nonagricultural Employment



Unemployment Information (all estimates in thousands)

| | Midland MSA | | | | Texas (Actual) | | | | United States (Actual) | | | |
|--------|-------------|------|--------|------|----------------|----------|--------|------|------------------------|-----------|---------|------|
| | C.L.F. | Emp. | Unemp. | Rate | C.L.F. | Emp. | Unemp. | Rate | C.L.F. | Emp. | Unemp. | Rate |
| Aug-17 | 86.4 | 83.6 | 2.8 | 3.2 | 13,406.8 | 12,802.0 | 604.8 | 4.5 | 160,863.0 | 153,576.0 | 7,287.0 | 4.5 |
| Jul-17 | 86.8 | 84.0 | 2.8 | 3.2 | 13,434.6 | 12,850.6 | 584.0 | 4.3 | 161,911.0 | 154,470.0 | 7,441.0 | 4.6 |
| Aug-16 | 86.5 | 82.4 | 4.1 | 4.7 | 13,295.2 | 12,639.0 | 656.2 | 4.9 | 159,800.0 | 151,804.0 | 7,996.0 | 5.0 |

Historical Unemployment Rates

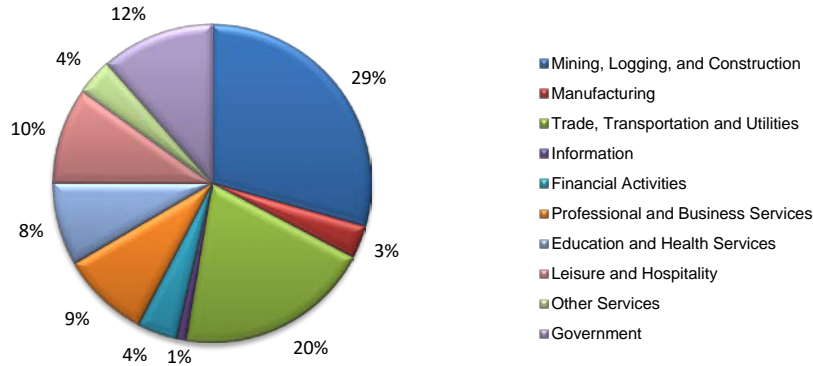


MIDLAND CES

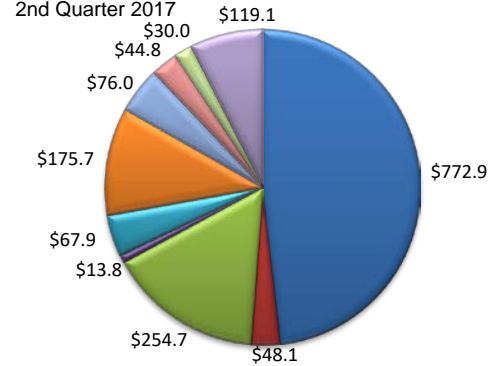
| Area | Series Title | Aug-17 | Jul-17 | Aug-17 | Monthly Change | Monthly % | Yearly Change | Yearly % |
|---------|---|--------|--------|--------|----------------|-----------|---------------|----------|
| Midland | Total Nonfarm | 88,400 | 88,300 | 86,600 | 100 | 0.1% | 1,800 | 2.1% |
| Midland | .Total Private | 78,600 | 78,300 | 77,100 | 300 | 0.4% | 1,500 | 1.9% |
| Midland | .Goods Producing | 28,400 | 28,300 | 26,400 | 100 | 0.4% | 2,000 | 7.6% |
| Midland | ..Mining, Logging and Construction | 25,400 | 25,300 | 23,500 | 100 | 0.4% | 1,900 | 8.1% |
| Midland | ..Manufacturing | 3,000 | 3,000 | 2,900 | 0 | 0.0% | 100 | 3.4% |
| Midland | .Service-Providing | 60,000 | 60,000 | 60,200 | 0 | 0.0% | -200 | -0.3% |
| Midland | ..Private Service Providing | 50,200 | 50,000 | 50,700 | 200 | 0.4% | -500 | -1.0% |
| Midland | ..Trade, Transportation, and Utilities | 17,600 | 17,500 | 17,800 | 100 | 0.6% | -200 | -1.1% |
| Midland | ...Wholesale Trade | 4,700 | 4,800 | 4,700 | -100 | -2.1% | 0 | 0.0% |
| Midland | ...Retail Trade | 9,300 | 9,100 | 9,300 | 200 | 2.2% | 0 | 0.0% |
| Midland | ...Transportation, Warehousing, and Utilities | 3,600 | 3,600 | 3,800 | 0 | 0.0% | -200 | -5.3% |
| Midland | ..Information | 1,000 | 1,000 | 1,000 | 0 | 0.0% | 0 | 0.0% |
| Midland | ..Financial Activities | 3,600 | 3,600 | 3,600 | 0 | 0.0% | 0 | 0.0% |
| Midland | ..Professional and Business Services | 8,200 | 8,100 | 8,300 | 100 | 1.2% | -100 | -1.2% |
| Midland | ..Education and Health Services | 7,200 | 7,200 | 7,500 | 0 | 0.0% | -300 | -4.0% |
| Midland | ..Leisure and Hospitality | 9,200 | 9,200 | 9,300 | 0 | 0.0% | -100 | -1.1% |
| Midland | ..Other Services | 3,400 | 3,400 | 3,200 | 0 | 0.0% | 200 | 6.3% |
| Midland | ..Government | 9,800 | 10,000 | 9,500 | -200 | -2.0% | 300 | 3.2% |
| Midland | ...Federal Government | 600 | 600 | 600 | 0 | 0.0% | 0 | 0.0% |
| Midland | ...State Government | 600 | 600 | 600 | 0 | 0.0% | 0 | 0.0% |
| Midland | ...Local Government | 8,600 | 8,800 | 8,300 | -200 | -2.3% | 300 | 3.6% |

(Martin, Midland)

Industry Composition



Wages by Industry (in millions)



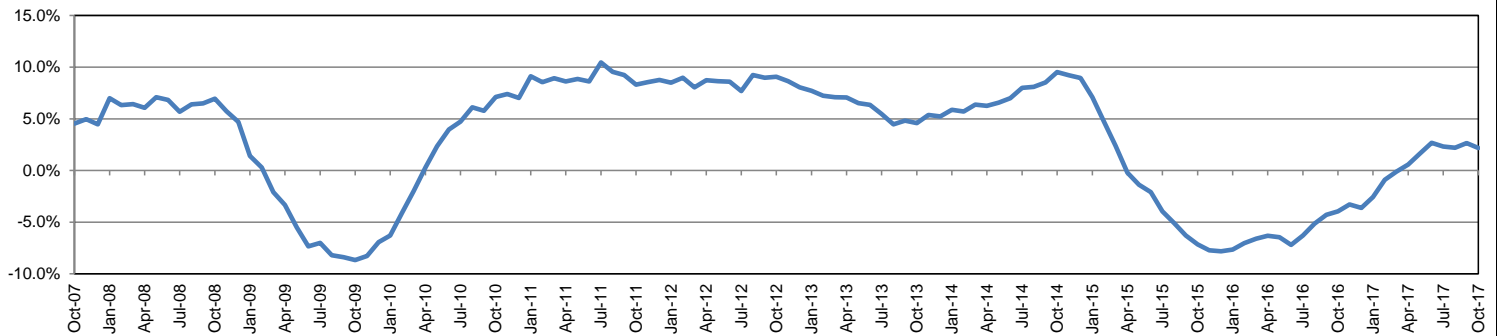
Employment by Industry

| | Oct-17 | Sep-17 | Oct-16 | Monthly Change | | Annual Change | |
|--------------------------------------|--------|--------|--------|----------------|-------|---------------|--------|
| | | | | Actual | % | Actual | % |
| | | | | | | | |
| Total Nonfarm | 89,000 | 89,100 | 87,100 | -100 | -0.1% | 1,900 | 2.2% |
| Mining, Logging, and Construction | 26,100 | 25,800 | 24,200 | 300 | 1.2% | 1,900 | 7.9% |
| Manufacturing | 3,000 | 3,000 | 2,900 | 0 | 0.0% | 100 | 3.4% |
| Trade, Transportation, and Utilities | 17,700 | 17,600 | 17,700 | 100 | 0.6% | 0 | 0.0% |
| Information | 900 | 900 | 1,000 | 0 | 0.0% | -100 | -10.0% |
| Financial Activities | 3,600 | 3,600 | 3,600 | 0 | 0.0% | 0 | 0.0% |
| Professional and Business Services | 8,000 | 8,200 | 8,400 | -200 | -2.4% | -400 | -4.8% |
| Education and Health Services | 7,500 | 7,400 | 7,700 | 100 | 1.4% | -200 | -2.6% |
| Leisure and Hospitality | 8,700 | 9,100 | 8,500 | -400 | -4.4% | 200 | 2.4% |
| Other Services | 3,300 | 3,300 | 3,100 | 0 | 0.0% | 200 | 6.5% |
| Government | 10,200 | 10,200 | 10,000 | 0 | 0.0% | 200 | 2.0% |

Industry Size Class

| Size Class | Employees per firm | Number of Firms | June 2017 | |
|------------|--------------------|-----------------|--------------------------|--------------------|
| | | | Employment in Size Class | % Total Employment |
| 9 | 1000+ | 4 | 7,249 | 7.9% |
| 8 | 500-999 | 13 | 9,223 | 10.1% |
| 7 | 250-499 | 22 | 7,347 | 8.0% |
| 6 | 100-249 | 120 | 18,072 | 19.8% |
| 5 | 50-99 | 206 | 14,359 | 15.7% |
| 4 | 20-49 | 551 | 16,591 | 18.2% |
| 3 | 10-19 | 603 | 8,365 | 9.2% |
| 2 | 5-9 | 860 | 5,663 | 6.2% |
| 1 | 1-4 | 2,211 | 4,489 | 4.9% |
| 0 | 0 | 445 | 0 | 0.0% |
| Total | | 5,035 | 91,358 | 100.0% |

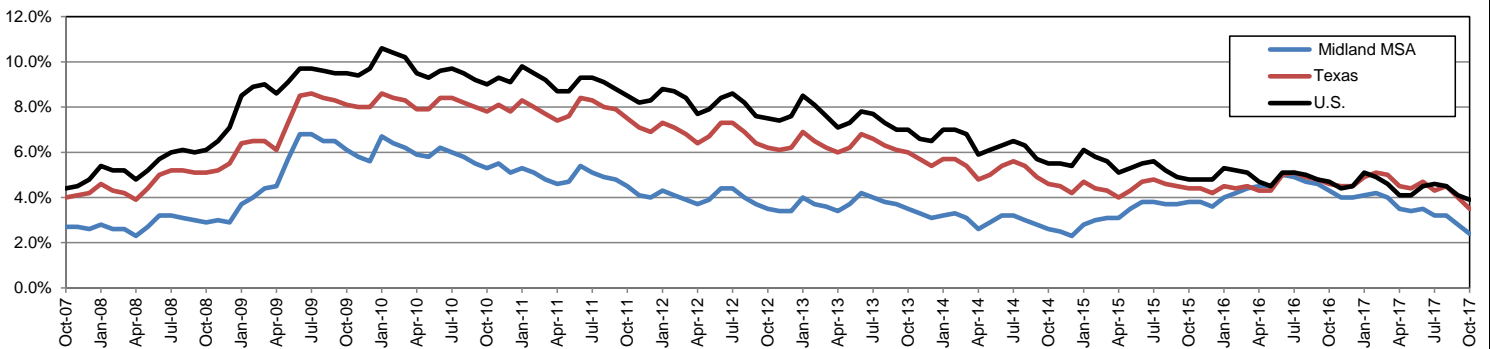
Annual Growth Rate for Total Nonagricultural Employment



Unemployment Information (all estimates in thousands)

| | Midland MSA | | | | Texas (Actual) | | | | United States (Actual) | | | |
|--------|-------------|------|--------|------|----------------|----------|--------|------|------------------------|-----------|---------|------|
| | C.L.F. | Emp. | Unemp. | Rate | C.L.F. | Emp. | Unemp. | Rate | C.L.F. | Emp. | Unemp. | Rate |
| Oct-17 | 86.2 | 84.2 | 2.1 | 2.4 | 13,392.3 | 12,922.1 | 470.2 | 3.5 | 160,465.0 | 154,223.0 | 6,242.0 | 3.9 |
| Sep-17 | 87.5 | 85.1 | 2.5 | 2.8 | 13,498.7 | 12,954.8 | 543.9 | 4.0 | 161,049.0 | 154,494.0 | 6,556.0 | 4.1 |
| Oct-16 | 86.4 | 82.7 | 3.7 | 4.3 | 13,338.7 | 12,725.9 | 612.9 | 4.6 | 159,783.0 | 152,335.0 | 7,447.0 | 4.7 |

Historical Unemployment Rates



MIDLAND CES

| Area | Series Title | Oct-17 | Sep-17 | Oct-17 | Monthly Change | Monthly % | Yearly Change | Yearly % |
|---------|---|--------|--------|--------|----------------|-----------|---------------|----------|
| Midland | Total Nonfarm | 89,000 | 89,100 | 87,100 | -100 | -0.1% | 1,900 | 2.2% |
| Midland | .Total Private | 78,800 | 78,900 | 77,100 | -100 | -0.1% | 1,700 | 2.2% |
| Midland | .Goods Producing | 29,100 | 28,800 | 27,100 | 300 | 1.0% | 2,000 | 7.4% |
| Midland | ..Mining, Logging and Construction | 26,100 | 25,800 | 24,200 | 300 | 1.2% | 1,900 | 7.9% |
| Midland | ..Manufacturing | 3,000 | 3,000 | 2,900 | 0 | 0.0% | 100 | 3.4% |
| Midland | .Service-Providing | 59,900 | 60,300 | 60,000 | -400 | -0.7% | -100 | -0.2% |
| Midland | .Private Service Providing | 49,700 | 50,100 | 50,000 | -400 | -0.8% | -300 | -0.6% |
| Midland | ..Trade, Transportation, and Utilities | 17,700 | 17,600 | 17,700 | 100 | 0.6% | 0 | 0.0% |
| Midland | ...Wholesale Trade | 4,800 | 4,800 | 4,800 | 0 | 0.0% | 0 | 0.0% |
| Midland | ...Retail Trade | 9,300 | 9,200 | 9,200 | 100 | 1.1% | 100 | 1.1% |
| Midland | ...Transportation, Warehousing, and Utilities | 3,600 | 3,600 | 3,700 | 0 | 0.0% | -100 | -2.7% |
| Midland | ..Information | 900 | 900 | 1,000 | 0 | 0.0% | -100 | -10.0% |
| Midland | ..Financial Activities | 3,600 | 3,600 | 3,600 | 0 | 0.0% | 0 | 0.0% |
| Midland | ..Professional and Business Services | 8,000 | 8,200 | 8,400 | -200 | -2.4% | -400 | -4.8% |
| Midland | ..Education and Health Services | 7,500 | 7,400 | 7,700 | 100 | 1.4% | -200 | -2.6% |
| Midland | ..Leisure and Hospitality | 8,700 | 9,100 | 8,500 | -400 | -4.4% | 200 | 2.4% |
| Midland | ..Other Services | 3,300 | 3,300 | 3,100 | 0 | 0.0% | 200 | 6.5% |
| Midland | ..Government | 10,200 | 10,200 | 10,000 | 0 | 0.0% | 200 | 2.0% |
| Midland | ...Federal Government | 600 | 600 | 600 | 0 | 0.0% | 0 | 0.0% |
| Midland | ...State Government | 600 | 600 | 600 | 0 | 0.0% | 0 | 0.0% |
| Midland | ...Local Government | 9,000 | 9,000 | 8,800 | 0 | 0.0% | 200 | 2.3% |

MIDLAND CES

| Area | Series Title | Dec-17 | Nov-17 | Dec-16 | Monthly Change | Monthly % | Yearly Change | Yearly % |
|---------|---|--------|--------|--------|----------------|-----------|---------------|----------|
| Midland | Total Nonfarm | 90,200 | 89,900 | 87,500 | 300 | 0.3% | 2,700 | 3.1% |
| Midland | .Total Private | 79,900 | 79,600 | 77,500 | 300 | 0.4% | 2,400 | 3.1% |
| Midland | .Goods Producing | 29,500 | 29,300 | 27,100 | 200 | 0.7% | 2,400 | 8.9% |
| Midland | ..Mining, Logging and Construction | 26,400 | 26,300 | 24,200 | 100 | 0.4% | 2,200 | 9.1% |
| Midland | ..Manufacturing | 3,100 | 3,000 | 2,900 | 100 | 3.3% | 200 | 6.9% |
| Midland | .Service-Providing | 60,700 | 60,600 | 60,400 | 100 | 0.2% | 300 | 0.5% |
| Midland | ..Private Service Providing | 50,400 | 50,300 | 50,400 | 100 | 0.2% | 0 | 0.0% |
| Midland | ..Trade, Transportation, and Utilities | 18,100 | 18,100 | 18,200 | 0 | 0.0% | -100 | -0.5% |
| Midland | ...Wholesale Trade | 4,800 | 4,800 | 4,800 | 0 | 0.0% | 0 | 0.0% |
| Midland | ...Retail Trade | 9,600 | 9,600 | 9,600 | 0 | 0.0% | 0 | 0.0% |
| Midland | ...Transportation, Warehousing, and Utilities | 3,700 | 3,700 | 3,800 | 0 | 0.0% | -100 | -2.6% |
| Midland | ..Information | 900 | 900 | 1,000 | 0 | 0.0% | -100 | -10.0% |
| Midland | ..Financial Activities | 3,600 | 3,600 | 3,600 | 0 | 0.0% | 0 | 0.0% |
| Midland | ..Professional and Business Services | 8,100 | 8,100 | 8,200 | 0 | 0.0% | -100 | -1.2% |
| Midland | ..Education and Health Services | 7,600 | 7,600 | 7,600 | 0 | 0.0% | 0 | 0.0% |
| Midland | ..Leisure and Hospitality | 8,800 | 8,700 | 8,700 | 100 | 1.1% | 100 | 1.1% |
| Midland | ..Other Services | 3,300 | 3,300 | 3,100 | 0 | 0.0% | 200 | 6.5% |
| Midland | ..Government | 10,300 | 10,300 | 10,000 | 0 | 0.0% | 300 | 3.0% |
| Midland | ...Federal Government | 600 | 600 | 600 | 0 | 0.0% | 0 | 0.0% |
| Midland | ...State Government | 600 | 600 | 600 | 0 | 0.0% | 0 | 0.0% |
| Midland | ...Local Government | 9,100 | 9,100 | 8,800 | 0 | 0.0% | 300 | 3.4% |