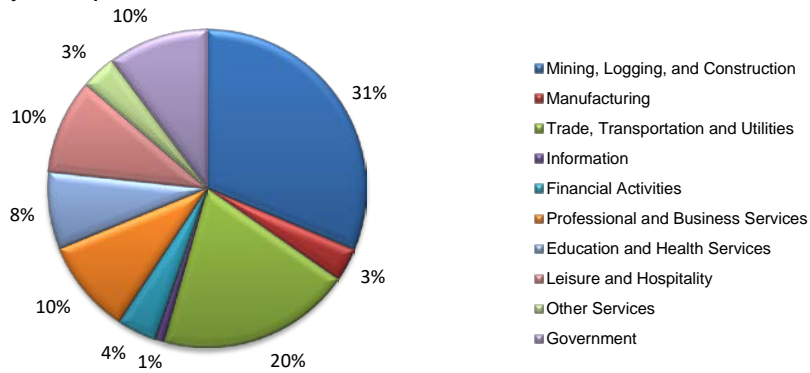
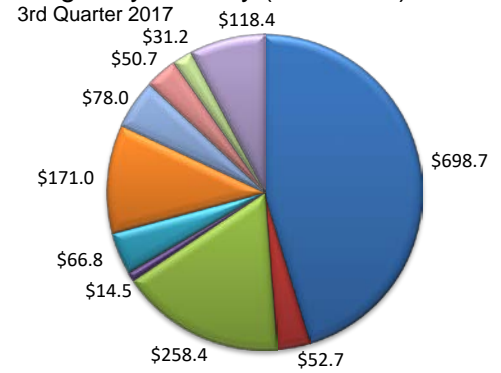


(Martin, Midland)

Industry Composition



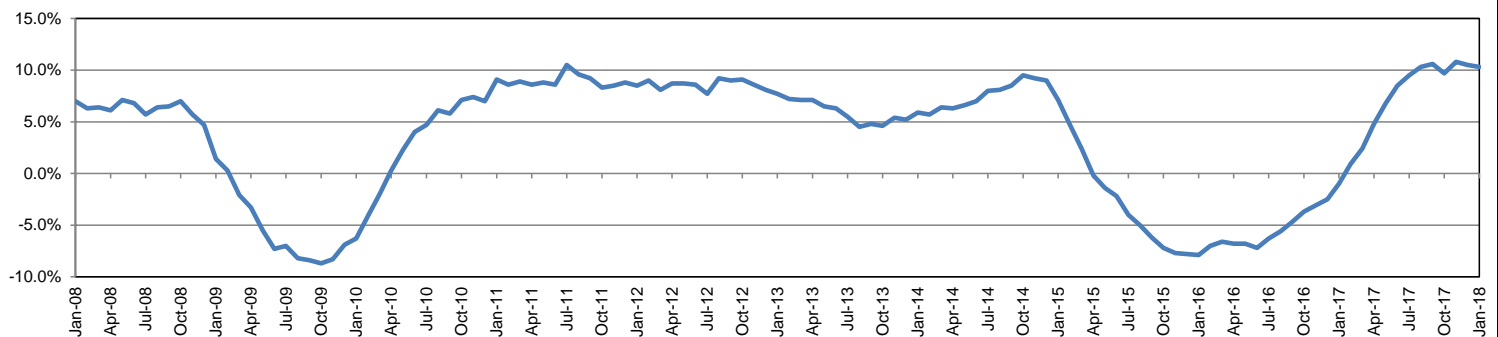
Wages by Industry (in millions)



Employment by Industry

	Monthly Change					Annual Change		Size Class	Employees per firm	Number of Firms	Employment in Size Class	% Total Employment	
	Jan-18	Dec-17	Jan-17	Actual	%	Actual	%						
Total Nonfarm	97,300	97,800	88,200	-500	-0.5%	9,100	10.3%	9	1000+	5	8,126	8.7%	
Mining, Logging and Construction	30,400	30,000	24,500	400	1.3%	5,900	24.1%	8	500-999	14	9,766	10.4%	
Manufacturing	3,300	3,300	3,000	0	0.0%	300	10.0%	7	250-499	23	7,614	8.1%	
Trade, Transportation, and Utilities	19,200	19,600	18,200	-400	-2.0%	1,000	5.5%	6	100-249	117	17,696	18.9%	
Information	900	1,000	900	-100	-10.0%	0	0.0%	5	50-99	216	15,170	16.2%	
Financial Activities	3,900	4,000	3,600	-100	-2.5%	300	8.3%	4	20-49	563	16,843	18.0%	
Professional and Business Services	9,300	9,300	8,800	0	0.0%	500	5.7%	3	10-19	588	8,084	8.6%	
Education and Health Services	7,600	7,600	7,400	0	0.0%	200	2.7%	2	5-9	862	5,694	6.1%	
Leisure and Hospitality	9,400	9,600	8,600	-200	-2.1%	800	9.3%	1	1-4	2,189	4,475	4.8%	
Other Services	3,400	3,400	3,200	0	0.0%	200	6.3%	0	0	524	0	0.0%	
Government	9,900	10,000	10,000	-100	-1.0%	-100	-1.0%	Total			5,101	93,468	100.0%

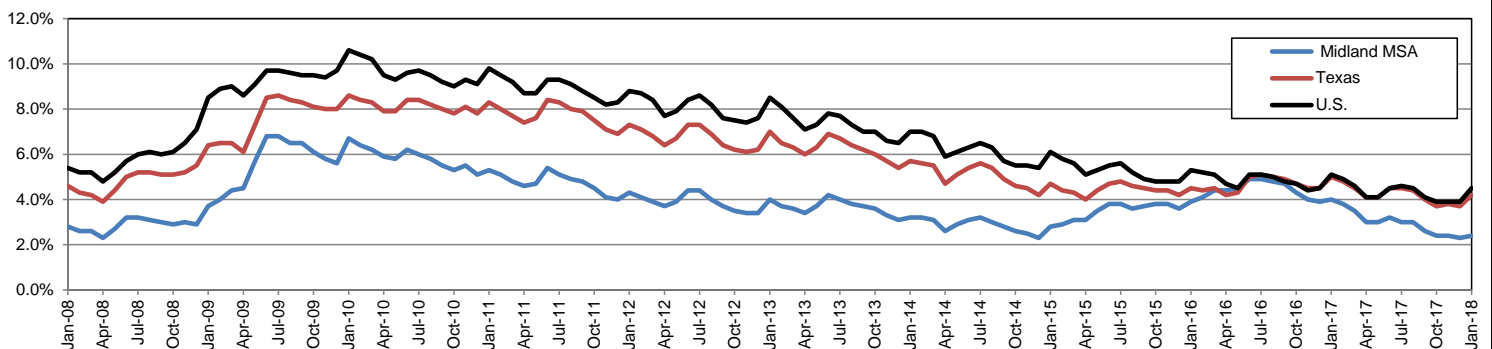
Annual Growth Rate for Total Nonagricultural Employment



Unemployment Information (all estimates in thousands)

	Midland MSA				Texas (Actual)				United States (Actual)			
	C.L.F.	Emp.	Unemp.	Rate	C.L.F.	Emp.	Unemp.	Rate	C.L.F.	Emp.	Unemp.	Rate
Jan-18	95.6	93.3	2.3	2.4	13,622.1	13,054.1	568.0	4.2	160,037.0	152,848.0	7,189.0	4.5
Dec-17	94.7	92.6	2.1	2.3	13,598.1	13,096.2	501.8	3.7	159,880.0	153,602.0	6,278.0	3.9
Jan-17	88.4	84.8	3.6	4.0	13,417.3	12,749.0	668.4	5.0	158,676.0	150,527.0	8,149.0	5.1

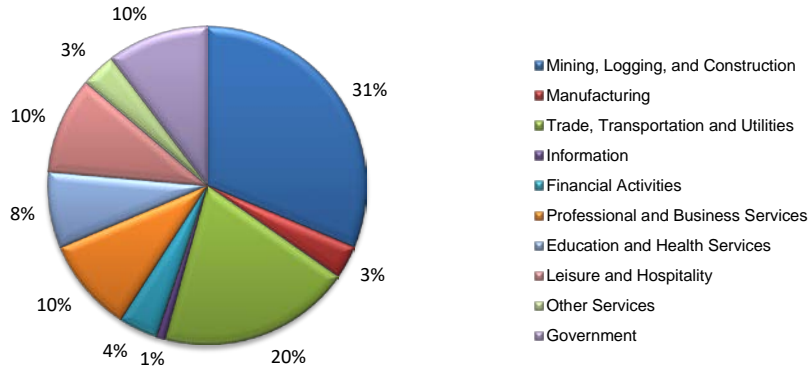
Historical Unemployment Rates



MIDLAND CES								
Area	Series Title	Jan-18	Dec-17	Jan-17	Monthly Change	Monthly %	Yearly Change	Yearly %
Midland	Total Nonfarm	97,300	97,800	88,200	-500	-0.5%	9,100	10.3%
Midland	.Total Private	87,400	87,800	78,200	-400	-0.5%	9,200	11.8%
Midland	.Goods Producing	33,700	33,300	27,500	400	1.2%	6,200	22.5%
Midland	..Mining, Logging and Construction	30,400	30,000	24,500	400	1.3%	5,900	24.1%
Midland	..Manufacturing	3,300	3,300	3,000	0	0.0%	300	10.0%
Midland	.Service-Providing	63,600	64,500	60,700	-900	-1.4%	2,900	4.8%
Midland	.Private Service Providing	53,700	54,500	50,700	-800	-1.5%	3,000	5.9%
Midland	..Trade, Transportation, and Utilities	19,200	19,600	18,200	-400	-2.0%	1,000	5.5%
Midland	...Wholesale Trade	6,000	6,000	5,100	0	0.0%	900	17.6%
Midland	...Retail Trade	9,300	9,600	9,200	-300	-3.1%	100	1.1%
Midland	...Transportation, Warehousing, and Utilities	3,900	4,000	3,900	-100	-2.5%	0	0.0%
Midland	..Information	900	1,000	900	-100	-10.0%	0	0.0%
Midland	..Financial Activities	3,900	4,000	3,600	-100	-2.5%	300	8.3%
Midland	..Professional and Business Services	9,300	9,300	8,800	0	0.0%	500	5.7%
Midland	..Education and Health Services	7,600	7,600	7,400	0	0.0%	200	2.7%
Midland	..Leisure and Hospitality	9,400	9,600	8,600	-200	-2.1%	800	9.3%
Midland	..Other Services	3,400	3,400	3,200	0	0.0%	200	6.3%
Midland	..Government	9,900	10,000	10,000	-100	-1.0%	-100	-1.0%
Midland	...Federal Government	500	600	600	-100	-16.7%	-100	-16.7%
Midland	...State Government	600	600	600	0	0.0%	0	0.0%
Midland	...Local Government	8,800	8,800	8,800	0	0.0%	0	0.0%

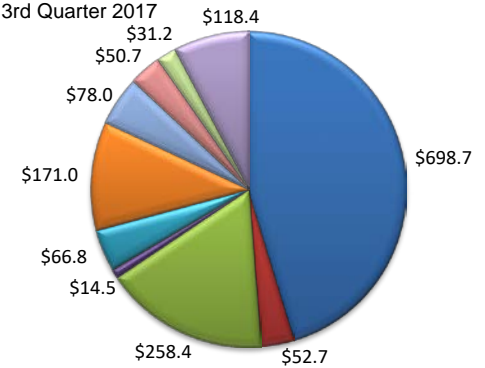
(Martin, Midland)

Industry Composition



Wages by Industry (in millions)

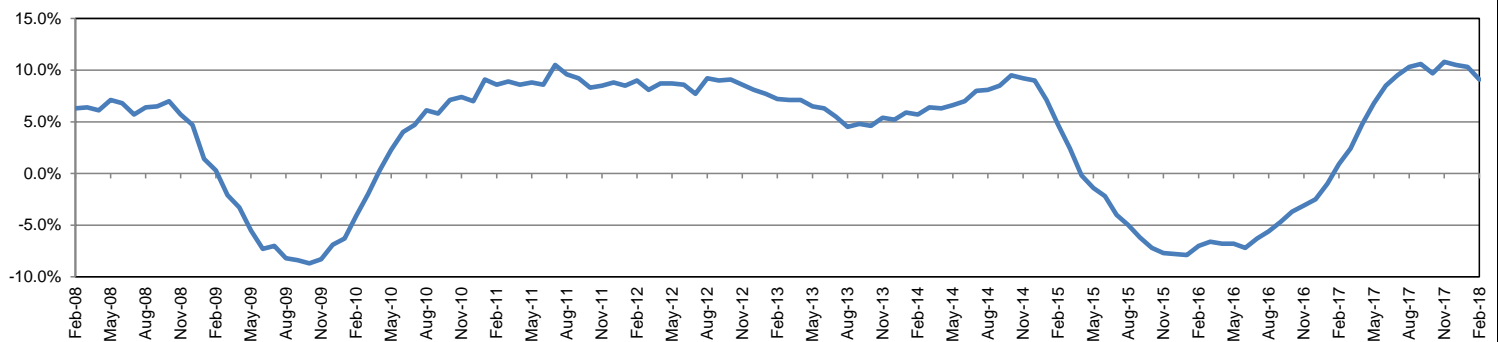
3rd Quarter 2017



Employment by Industry

	Feb-18	Jan-18	Feb-17	Monthly Change		Annual Change		Industry Size Class					September 2017	
				Actual	%	Actual	%	Size Class	Employees per firm	Number of Firms	Employment in Size Class	% Total Employment		
Total Nonfarm	97,400	97,300	89,300	100	0.1%	8,100	9.1%	9	1000+	5	8,126	8.7%		
Mining, Logging and Construction	30,500	30,300	25,100	200	0.7%	5,400	21.5%	8	500-999	14	9,766	10.4%		
Manufacturing	3,300	3,300	3,000	0	0.0%	300	10.0%	7	250-499	23	7,614	8.1%		
Trade, Transportation, and Utilities	19,000	19,200	18,100	-200	-1.0%	900	5.0%	6	100-249	117	17,696	18.9%		
Information	900	1,000	900	-100	-10.0%	0	0.0%	5	50-99	216	15,170	16.2%		
Financial Activities	3,900	3,900	3,600	0	0.0%	300	8.3%	4	20-49	563	16,843	18.0%		
Professional and Business Services	9,300	9,300	9,000	0	0.0%	300	3.3%	3	10-19	588	8,084	8.6%		
Education and Health Services	7,500	7,600	7,500	-100	-1.3%	0	0.0%	2	5-9	862	5,694	6.1%		
Leisure and Hospitality	9,600	9,400	8,800	200	2.1%	800	9.1%	1	1-4	2,189	4,475	4.8%		
Other Services	3,400	3,400	3,300	0	0.0%	100	3.0%	0	0	524	0	0.0%		
Government	10,000	9,900	10,000	100	1.0%	0	0.0%							
								Total		5,101	93,468	100.0%		

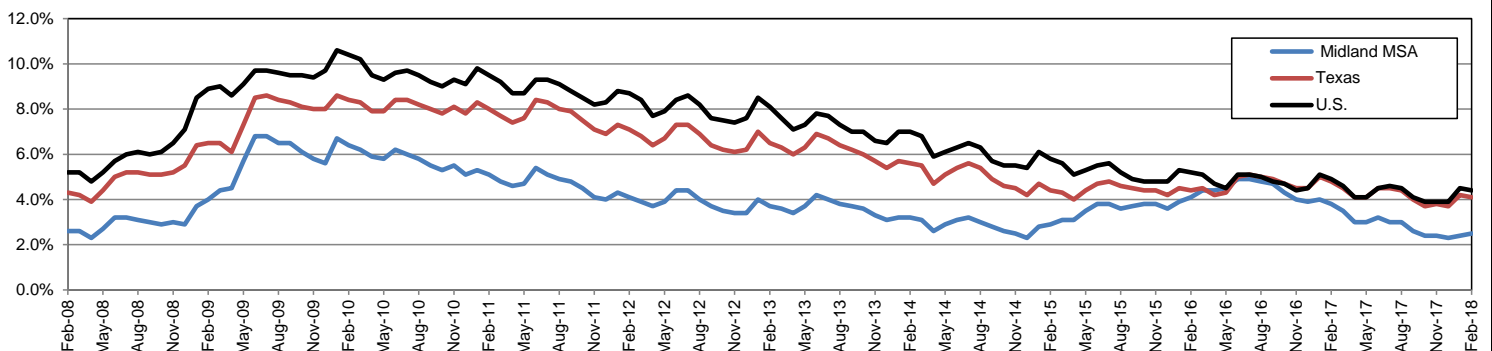
Annual Growth Rate for Total Nonagricultural Employment



Unemployment Information (all estimates in thousands)

	Midland MSA				Texas (Actual)				United States (Actual)			
	C.L.F.	Emp.	Unemp.	Rate	C.L.F.	Emp.	Unemp.	Rate	C.L.F.	Emp.	Unemp.	Rate
Feb-18	96.3	93.9	2.4	2.5	13,811.9	13,241.9	570.0	4.1	161,494.0	154,403.0	7,091.0	4.4
Jan-18	95.5	93.2	2.3	2.4	13,621.8	13,053.8	568.0	4.2	160,037.0	152,848.0	7,189.0	4.5
Feb-17	89.1	85.6	3.4	3.8	13,494.0	12,840.8	653.1	4.8	159,482.0	151,594.0	7,887.0	4.9

Historical Unemployment Rates

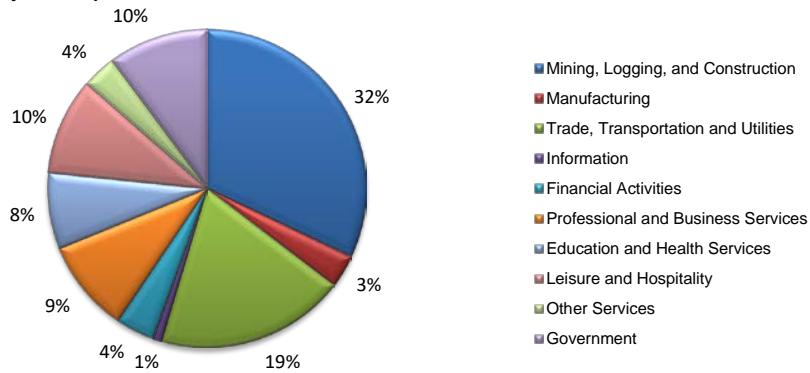


MIDLAND CES

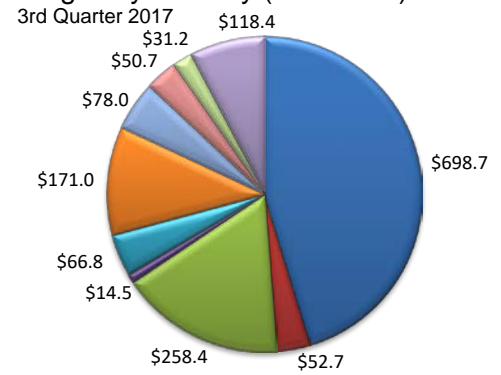
Area	Series Title	Feb-18	Jan-18	Feb-17	Monthly Change	Monthly %	Yearly Change	Yearly %
Midland	Total Nonfarm	97,400	97,300	89,300	100	0.1%	8,100	9.1%
Midland	.Total Private	87,400	87,400	79,300	0	0.0%	8,100	10.2%
Midland	.Goods Producing	33,800	33,600	28,100	200	0.6%	5,700	20.3%
Midland	..Mining, Logging and Construction	30,500	30,300	25,100	200	0.7%	5,400	21.5%
Midland	..Manufacturing	3,300	3,300	3,000	0	0.0%	300	10.0%
Midland	.Service-Providing	63,600	63,700	61,200	-100	-0.2%	2,400	3.9%
Midland	.Private Service Providing	53,600	53,800	51,200	-200	-0.4%	2,400	4.7%
Midland	..Trade, Transportation, and Utilities	19,000	19,200	18,100	-200	-1.0%	900	5.0%
Midland	...Wholesale Trade	6,000	6,000	5,200	0	0.0%	800	15.4%
Midland	...Retail Trade	9,100	9,300	9,000	-200	-2.2%	100	1.1%
Midland	...Transportation, Warehousing, and Utilities	3,900	3,900	3,900	0	0.0%	0	0.0%
Midland	..Information	900	1,000	900	-100	-10.0%	0	0.0%
Midland	..Financial Activities	3,900	3,900	3,600	0	0.0%	300	8.3%
Midland	..Professional and Business Services	9,300	9,300	9,000	0	0.0%	300	3.3%
Midland	..Education and Health Services	7,500	7,600	7,500	-100	-1.3%	0	0.0%
Midland	..Leisure and Hospitality	9,600	9,400	8,800	200	2.1%	800	9.1%
Midland	..Other Services	3,400	3,400	3,300	0	0.0%	100	3.0%
Midland	..Government	10,000	9,900	10,000	100	1.0%	0	0.0%
Midland	...Federal Government	600	500	600	100	20.0%	0	0.0%
Midland	...State Government	600	600	600	0	0.0%	0	0.0%
Midland	...Local Government	8,800	8,800	8,800	0	0.0%	0	0.0%

(Martin, Midland)

Industry Composition



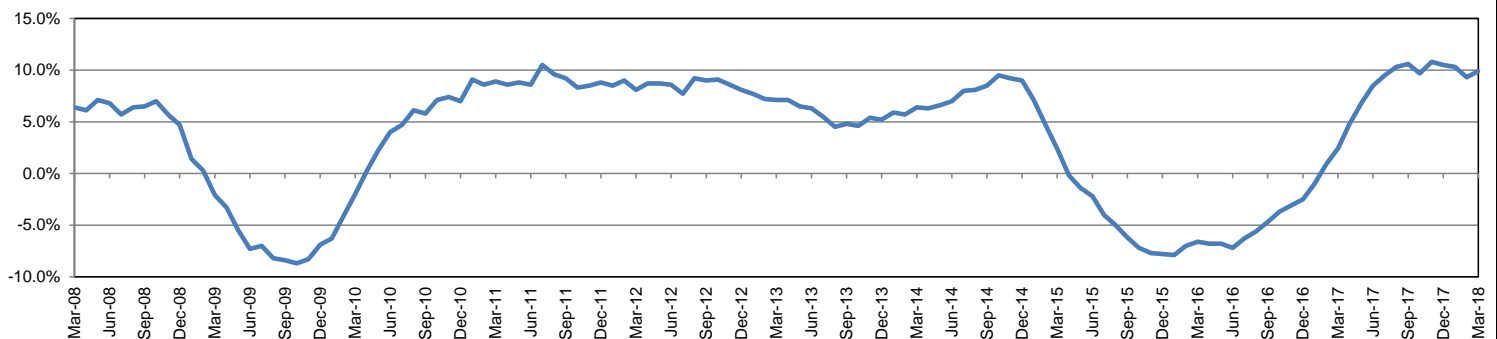
Wages by Industry (in millions)



Employment by Industry

	Mar-18	Feb-18	Mar-17	Monthly Change		Annual Change		Industry Size Class				
				Actual	%	Actual	%	Size Class	Employees per firm	Number of Firms	Employment in Size Class	% Total Employment
Total Nonfarm	98,700	97,600	89,800	1,100	1.1%	8,900	9.9%	9	1000+	5	8,126	8.7%
Mining, Logging and Construction	31,600	30,500	25,600	1,100	3.6%	6,000	23.4%	8	500-999	14	9,766	10.4%
Manufacturing	3,300	3,300	3,000	0	0.0%	300	10.0%	7	250-499	23	7,614	8.1%
Trade, Transportation, and Utilities	19,000	19,100	17,800	-100	-0.5%	1,200	6.7%	6	100-249	117	17,696	18.9%
Information	900	900	900	0	0.0%	0	0.0%	5	50-99	216	15,170	16.2%
Financial Activities	3,900	3,900	3,700	0	0.0%	200	5.4%	4	20-49	563	16,843	18.0%
Professional and Business Services	9,300	9,300	9,100	0	0.0%	200	2.2%	3	10-19	588	8,084	8.6%
Education and Health Services	7,600	7,600	7,500	0	0.0%	100	1.3%	2	5-9	862	5,694	6.1%
Leisure and Hospitality	9,700	9,600	8,900	100	1.0%	800	9.0%	1	1-4	2,189	4,475	4.8%
Other Services	3,400	3,400	3,300	0	0.0%	100	3.0%	0	0	524	0	0.0%
Government	10,000	10,000	10,000	0	0.0%	0	0.0%	Total		5,101	93,468	100.0%

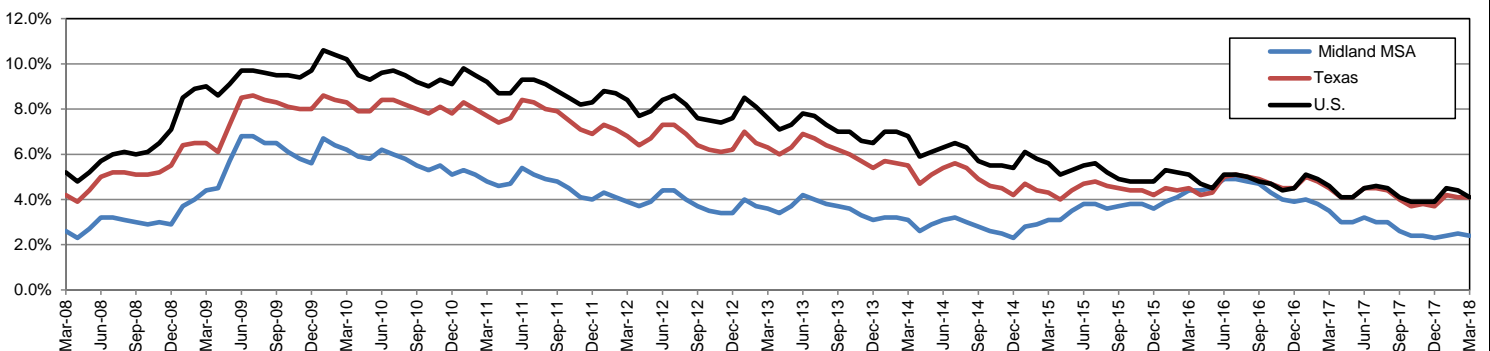
Annual Growth Rate for Total Nonagricultural Employment



Unemployment Information (all estimates in thousands)

	Midland MSA				Texas (Actual)				United States (Actual)			
	C.L.F.	Emp.	Unemp.	Rate	C.L.F.	Emp.	Unemp.	Rate	C.L.F.	Emp.	Unemp.	Rate
Mar-18	97.3	94.9	2.4	2.4	13,834.8	13,265.3	569.4	4.1	161,548.0	154,877.0	6,671.0	4.1
Feb-18	96.3	93.9	2.4	2.5	13,810.9	13,240.9	570.0	4.1	161,494.0	154,403.0	7,091.0	4.4
Mar-17	89.3	86.2	3.1	3.5	13,517.7	12,904.4	613.3	4.5	159,912.0	152,628.0	7,284.0	4.6

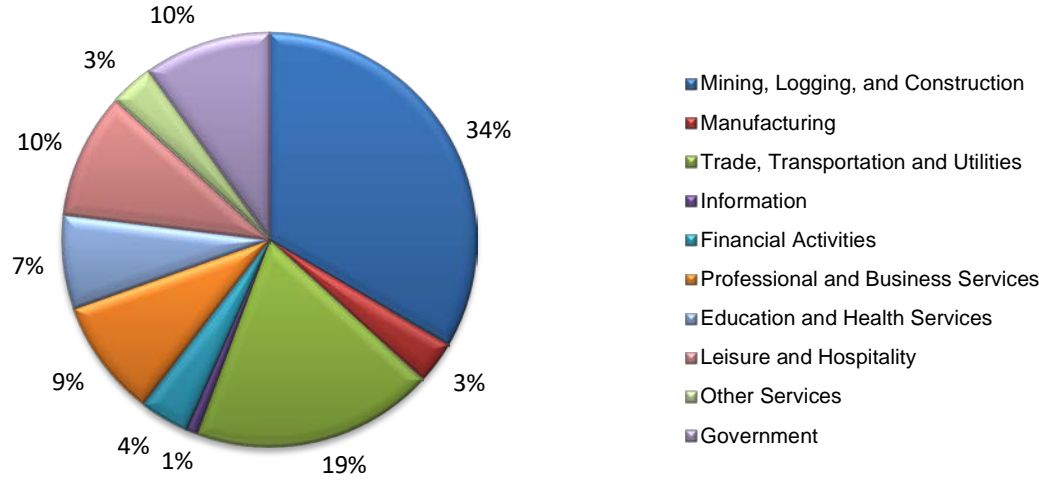
Historical Unemployment Rates



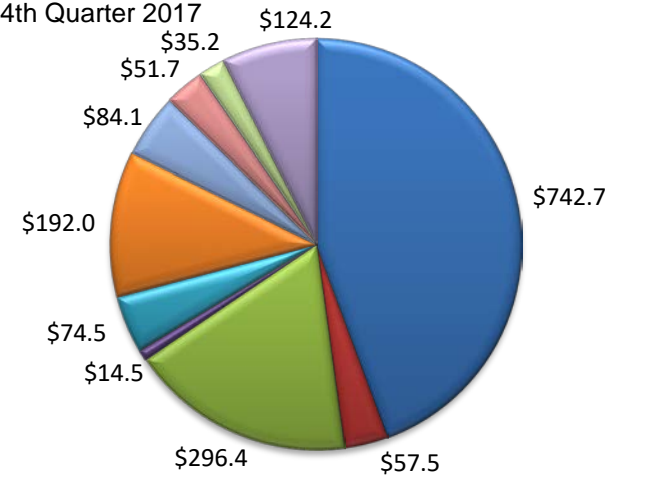
MIDLAND CES								
Area	Series Title	Mar-18	Feb-18	Mar-17	Monthly Change	Monthly %	Yearly Change	Yearly %
Midland	Total Nonfarm	98,700	97,600	89,800	1,100	1.1%	8,900	9.9%
Midland	.Total Private	88,700	87,600	79,800	1,100	1.3%	8,900	11.2%
Midland	.Goods Producing	34,900	33,800	28,600	1,100	3.3%	6,300	22.0%
Midland	..Mining, Logging and Construction	31,600	30,500	25,600	1,100	3.6%	6,000	23.4%
Midland	..Manufacturing	3,300	3,300	3,000	0	0.0%	300	10.0%
Midland	.Service-Providing	63,800	63,800	61,200	0	0.0%	2,600	4.2%
Midland	.Private Service Providing	53,800	53,800	51,200	0	0.0%	2,600	5.1%
Midland	..Trade, Transportation, and Utilities	19,000	19,100	17,800	-100	-0.5%	1,200	6.7%
Midland	...Wholesale Trade	6,000	6,000	5,200	0	0.0%	800	15.4%
Midland	...Retail Trade	9,100	9,200	8,800	-100	-1.1%	300	3.4%
Midland	...Transportation, Warehousing, and Utilities	3,900	3,900	3,800	0	0.0%	100	2.6%
Midland	..Information	900	900	900	0	0.0%	0	0.0%
Midland	..Financial Activities	3,900	3,900	3,700	0	0.0%	200	5.4%
Midland	..Professional and Business Services	9,300	9,300	9,100	0	0.0%	200	2.2%
Midland	..Education and Health Services	7,600	7,600	7,500	0	0.0%	100	1.3%
Midland	..Leisure and Hospitality	9,700	9,600	8,900	100	1.0%	800	9.0%
Midland	..Other Services	3,400	3,400	3,300	0	0.0%	100	3.0%
Midland	..Government	10,000	10,000	10,000	0	0.0%	0	0.0%
Midland	...Federal Government	500	600	600	-100	-16.7%	-100	-16.7%
Midland	...State Government	600	600	600	0	0.0%	0	0.0%
Midland	...Local Government	8,900	8,800	8,800	100	1.1%	100	1.1%

(Martin, Midland)

Industry Composition



Wages by Industry (in millions)



Employment by Industry

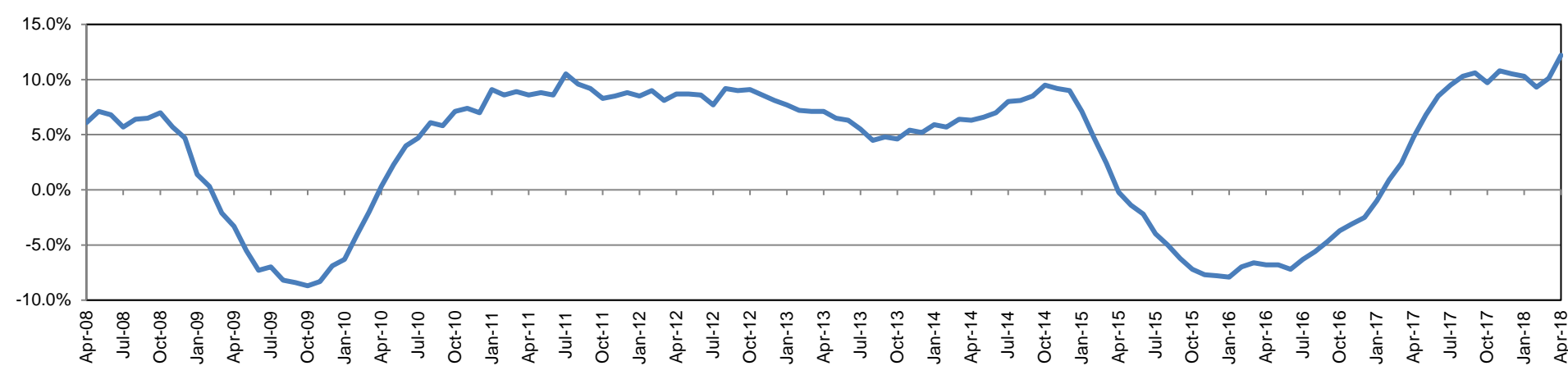
	Apr-18	Mar-18	Apr-17	Monthly Change		Annual Change	
				Actual	%	Actual	%
Total Nonfarm	102,300	98,900	91,200	3,400	3.4%	11,100	12.2%
Mining, Logging and Construction	34,200	31,700	26,200	2,500	7.9%	8,000	30.5%
Manufacturing	3,400	3,300	3,100	100	3.0%	300	9.7%
Trade, Transportation, and Utilities	19,300	19,000	18,400	300	1.6%	900	4.9%
Information	1,000	1,000	900	0	0.0%	100	11.1%
Financial Activities	3,900	3,900	3,700	0	0.0%	200	5.4%
Professional and Business Services	9,400	9,300	8,900	100	1.1%	500	5.6%
Education and Health Services	7,500	7,600	7,500	-100	-1.3%	0	0.0%
Leisure and Hospitality	10,000	9,700	9,100	300	3.1%	900	9.9%
Other Services	3,500	3,400	3,400	100	2.9%	100	2.9%
Government	10,100	10,000	10,000	100	1.0%	100	1.0%

Industry Size Class

December 2017

Size Class	Employees per firm	Number of Firms	Employment in Size Class	% Total Employment
9	1000+	4	7,253	7.5%
8	500-999	16	11,454	11.8%
7	250-499	26	8,789	9.0%
6	100-249	128	19,122	19.7%
5	50-99	214	14,892	15.3%
4	20-49	561	16,939	17.4%
3	10-19	600	8,300	8.5%
2	5-9	878	5,807	6.0%
1	1-4	2,288	4,617	4.8%
0	0	405	0	0.0%
Total		5,120	97,173	100.0%

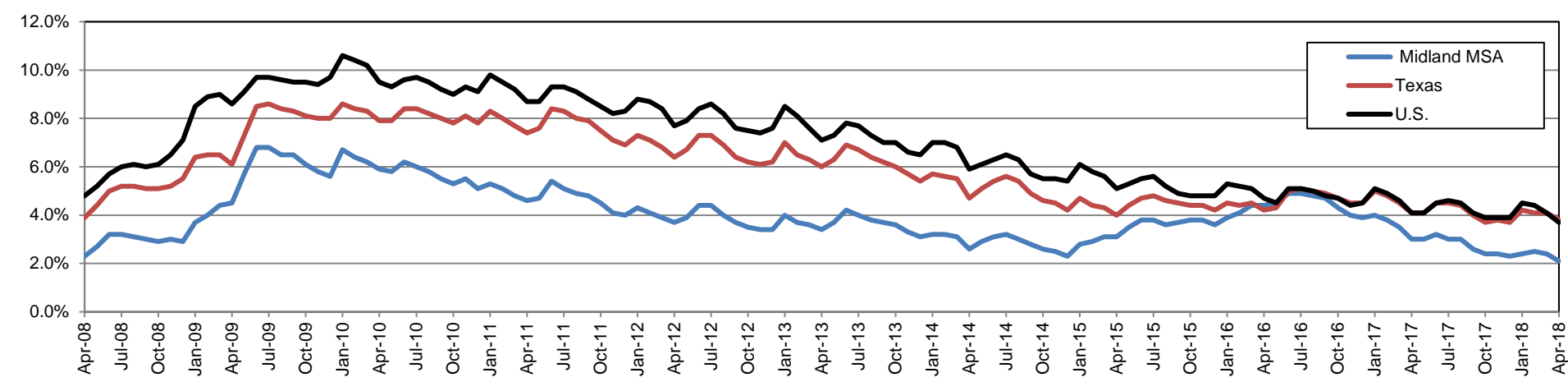
Annual Growth Rate for Total Nonagricultural Employment



Unemployment Information (all estimates in thousands)

	Midland MSA				Texas (Actual)				United States (Actual)			
	C.L.F.	Emp.	Unemp.	Rate	C.L.F.	Emp.	Unemp.	Rate	C.L.F.	Emp.	Unemp.	Rate
Apr-18	99.8	97.7	2.1	2.1	13,860.3	13,340.2	520.2	3.8	161,280.0	155,348.0	5,932.0	3.7
Mar-18	97.3	94.9	2.4	2.4	13,836.5	13,267.1	569.4	4.1	161,548.0	154,877.0	6,671.0	4.1
Apr-17	90.3	87.6	2.8	3.0	13,527.2	12,967.8	559.4	4.1	159,817.0	153,262.0	6,555.0	4.1

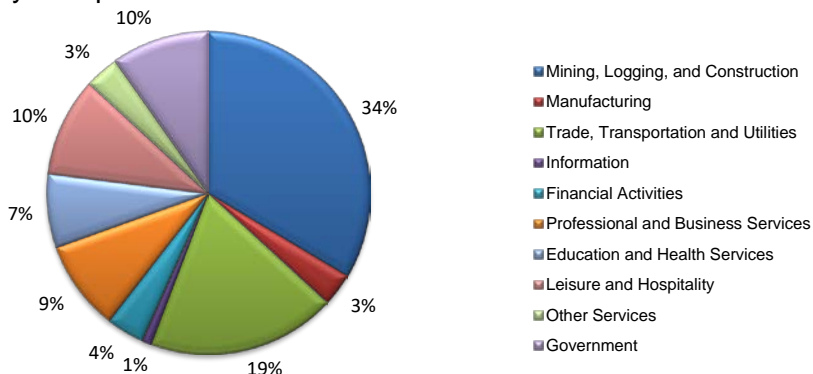
Historical Unemployment Rates



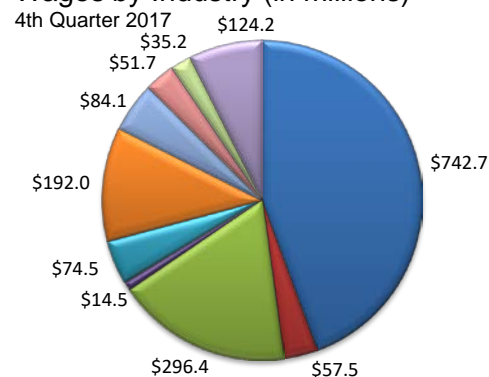
MIDLAND CES								
Area	Series Title	Apr-18	Mar-18	Apr-17	Monthly Change	Monthly %	Yearly Change	Yearly %
Midland	Total Nonfarm	102,300	98,900	91,200	3,400	3.4%	11,100	12.2%
Midland	.Total Private	92,200	88,900	81,200	3,300	3.7%	11,000	13.5%
Midland	.Goods Producing	37,600	35,000	29,300	2,600	7.4%	8,300	28.3%
Midland	..Mining, Logging and Construction	34,200	31,700	26,200	2,500	7.9%	8,000	30.5%
Midland	..Manufacturing	3,400	3,300	3,100	100	3.0%	300	9.7%
Midland	.Service-Providing	64,700	63,900	61,900	800	1.3%	2,800	4.5%
Midland	.Private Service Providing	54,600	53,900	51,900	700	1.3%	2,700	5.2%
Midland	..Trade, Transportation, and Utilities	19,300	19,000	18,400	300	1.6%	900	4.9%
Midland	...Wholesale Trade	6,100	6,000	5,400	100	1.7%	700	13.0%
Midland	...Retail Trade	9,300	9,100	9,100	200	2.2%	200	2.2%
Midland	...Transportation, Warehousing, and Utilities	3,900	3,900	3,900	0	0.0%	0	0.0%
Midland	..Information	1,000	1,000	900	0	0.0%	100	11.1%
Midland	..Financial Activities	3,900	3,900	3,700	0	0.0%	200	5.4%
Midland	..Professional and Business Services	9,400	9,300	8,900	100	1.1%	500	5.6%
Midland	..Education and Health Services	7,500	7,600	7,500	-100	-1.3%	0	0.0%
Midland	..Leisure and Hospitality	10,000	9,700	9,100	300	3.1%	900	9.9%
Midland	..Other Services	3,500	3,400	3,400	100	2.9%	100	2.9%
Midland	..Government	10,100	10,000	10,000	100	1.0%	100	1.0%
Midland	...Federal Government	600	500	600	100	20.0%	0	0.0%
Midland	...State Government	600	600	600	0	0.0%	0	0.0%
Midland	...Local Government	8,900	8,900	8,800	0	0.0%	100	1.1%

(Martin, Midland)

Industry Composition



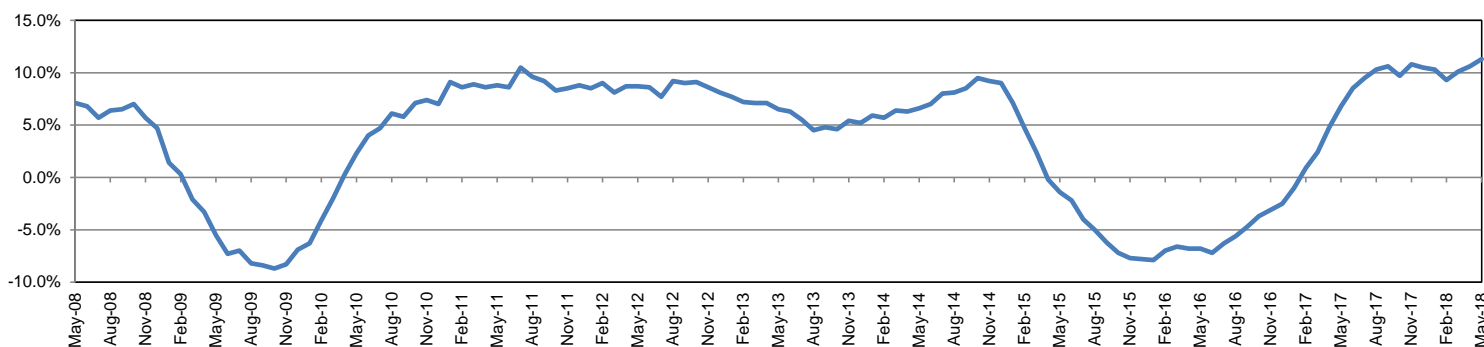
Wages by Industry (in millions)



Employment by Industry

	May-18	Apr-18	May-17	Monthly Change		Annual Change		Industry Size Class				
				Actual	%	Actual	%	Size Class	Employees per firm	Number of Firms	Employment in Size Class	% Total Employment
Total Nonfarm	102,800	100,900	92,400	1,900	1.9%	10,400	11.3%	9	1000+	4	7,253	7.5%
Mining, Logging and Construction	34,500	32,800	26,700	1,700	5.2%	7,800	29.2%	8	500-999	16	11,454	11.8%
Manufacturing	3,400	3,400	3,200	0	0.0%	200	6.3%	7	250-499	26	8,789	9.0%
Trade, Transportation, and Utilities	19,400	19,300	18,400	100	0.5%	1,000	5.4%	6	100-249	128	19,122	19.7%
Information	1,000	1,000	900	0	0.0%	100	11.1%	5	50-99	214	14,892	15.3%
Financial Activities	3,900	3,900	3,800	0	0.0%	100	2.6%	4	20-49	561	16,939	17.4%
Professional and Business Services	9,300	9,300	9,000	0	0.0%	300	3.3%	3	10-19	600	8,300	8.5%
Education and Health Services	7,600	7,500	7,500	100	1.3%	100	1.3%	2	5-9	878	5,807	6.0%
Leisure and Hospitality	10,200	10,100	9,500	100	1.0%	700	7.4%	1	1-4	2,288	4,617	4.8%
Other Services	3,500	3,500	3,400	0	0.0%	100	2.9%	0	0	405	0	0.0%
Government	10,000	10,100	10,000	-100	-1.0%	0	0.0%	Total		5,120	97,173	100.0%

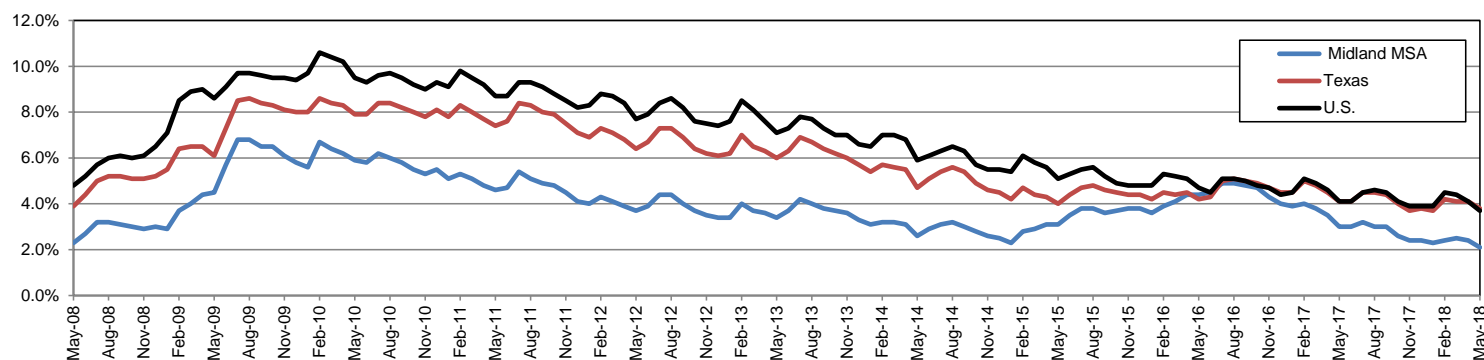
Annual Growth Rate for Total Nonagricultural Employment



Unemployment Information (all estimates in thousands)

	Midland MSA				Texas (Actual)				United States (Actual)			
	C.L.F.	Emp.	Unemp.	Rate	C.L.F.	Emp.	Unemp.	Rate	C.L.F.	Emp.	Unemp.	Rate
May-18	99.7	97.6	2.1	2.1	13,836.5	13,321.2	515.2	3.7	161,539.0	55,474.0	6,065.0	3.8
Apr-18	98.7	96.6	2.1	2.1	13,863.1	13,342.5	520.6	3.8	161,527.0	155,181.0	6,346.0	3.9
May-17	90.8	88.1	2.7	3.0	13,498.7	12,940.8	557.9	4.1	159,979.0	153,407.0	6,572.0	4.1

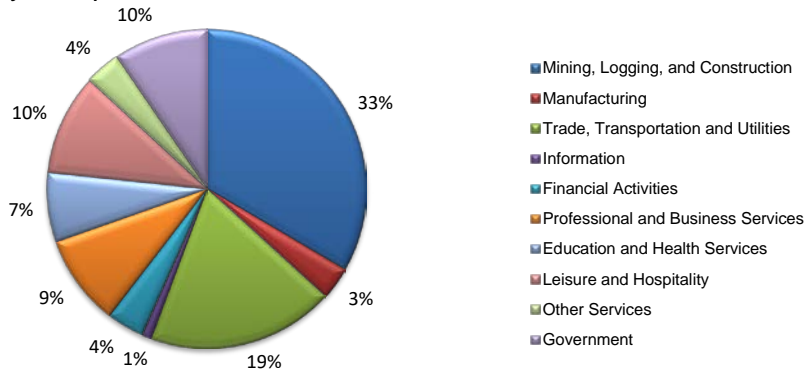
Historical Unemployment Rates



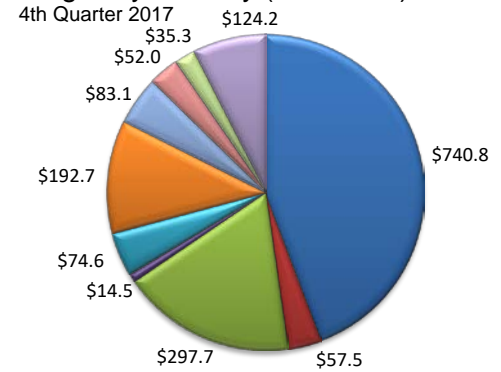
MIDLAND CES								
Area	Series Title	May-18	Apr-18	May-17	Monthly Change	Monthly %	Yearly Change	Yearly %
Midland	Total Nonfarm	102,800	100,900	92,400	1,900	1.9%	10,400	11.3%
Midland	.Total Private	92,800	90,800	82,400	2,000	2.2%	10,400	12.6%
Midland	.Goods Producing	37,900	36,200	29,900	1,700	4.7%	8,000	26.8%
Midland	..Mining, Logging and Construction	34,500	32,800	26,700	1,700	5.2%	7,800	29.2%
Midland	..Manufacturing	3,400	3,400	3,200	0	0.0%	200	6.3%
Midland	.Service-Providing	64,900	64,700	62,500	200	0.3%	2,400	3.8%
Midland	.Private Service Providing	54,900	54,600	52,500	300	0.5%	2,400	4.6%
Midland	..Trade, Transportation, and Utilities	19,400	19,300	18,400	100	0.5%	1,000	5.4%
Midland	...Wholesale Trade	6,100	6,100	5,400	0	0.0%	700	13.0%
Midland	...Retail Trade	9,400	9,300	9,200	100	1.1%	200	2.2%
Midland	...Transportation, Warehousing, and Utilities	3,900	3,900	3,800	0	0.0%	100	2.6%
Midland	..Information	1,000	1,000	900	0	0.0%	100	11.1%
Midland	..Financial Activities	3,900	3,900	3,800	0	0.0%	100	2.6%
Midland	..Professional and Business Services	9,300	9,300	9,000	0	0.0%	300	3.3%
Midland	..Education and Health Services	7,600	7,500	7,500	100	1.3%	100	1.3%
Midland	..Leisure and Hospitality	10,200	10,100	9,500	100	1.0%	700	7.4%
Midland	..Other Services	3,500	3,500	3,400	0	0.0%	100	2.9%
Midland	..Government	10,000	10,100	10,000	-100	-1.0%	0	0.0%
Midland	...Federal Government	500	600	600	-100	-16.7%	-100	-16.7%
Midland	...State Government	600	600	600	0	0.0%	0	0.0%
Midland	...Local Government	8,900	8,900	8,800	0	0.0%	100	1.1%

(Martin, Midland)

Industry Composition



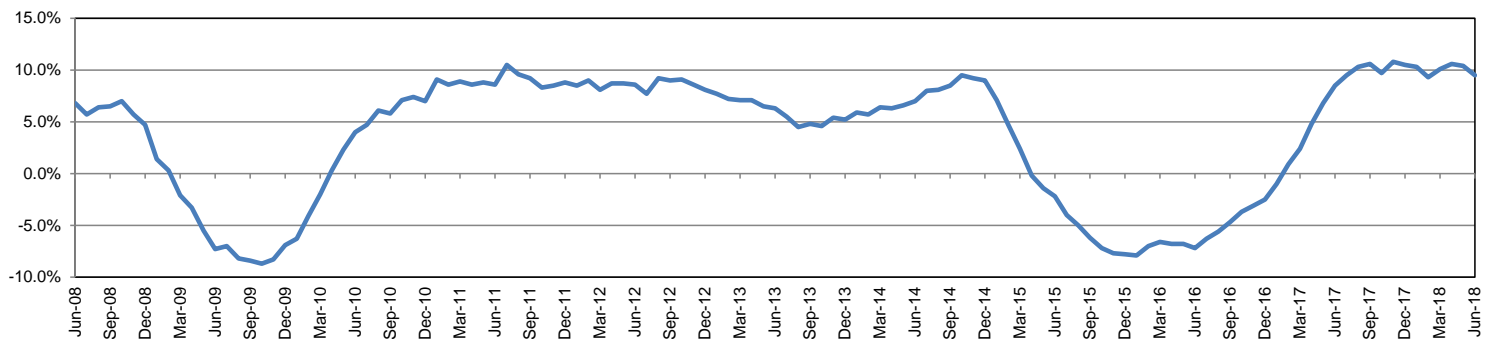
Wages by Industry (in millions)



Employment by Industry

	Jun-18	May-18	Jun-17	Monthly Change		Annual Change		Industry Size Class				
				Actual	%	Actual	%	Size Class	Employees per firm	Number of Firms	Employment in Size Class	% Total Employment
Total Nonfarm	102,400	102,000	93,500	400	0.4%	8,900	9.5%	9	1000+	4	7,253	7.4%
Mining, Logging and Construction	34,200	33,800	27,500	400	1.2%	6,700	24.4%	8	500-999	16	11,669	12.0%
Manufacturing	3,400	3,400	3,200	0	0.0%	200	6.3%	7	250-499	26	8,789	9.0%
Trade, Transportation, and Utilities	19,400	19,400	18,500	0	0.0%	900	4.9%	6	100-249	128	19,170	19.7%
Information	1,000	1,000	900	0	0.0%	100	11.1%	5	50-99	215	14,962	15.3%
Financial Activities	3,900	3,900	3,800	0	0.0%	100	2.6%	4	20-49	561	16,900	17.3%
Professional and Business Services	9,400	9,300	9,200	100	1.1%	200	2.2%	3	10-19	602	8,322	8.5%
Education and Health Services	7,200	7,500	7,400	-300	-4.0%	-200	-2.7%	2	5-9	879	5,813	6.0%
Leisure and Hospitality	10,500	10,200	9,800	300	2.9%	700	7.1%	1	1-4	2,304	4,645	4.8%
Other Services	3,700	3,500	3,500	200	5.7%	200	5.7%	0	0	404	0	0.0%
Government	9,700	10,000	9,700	-300	-3.0%	0	0.0%	Total		5,139	97,523	100.0%

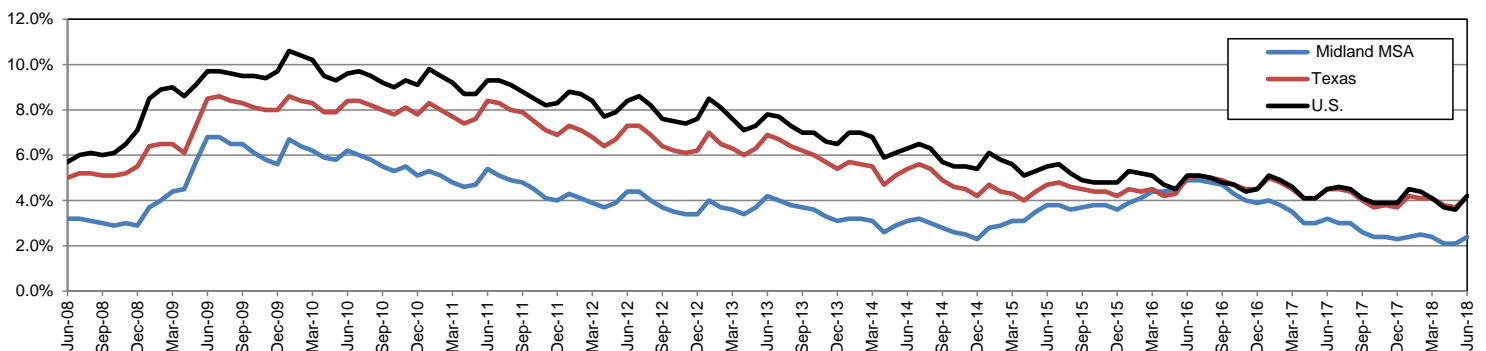
Annual Growth Rate for Total Nonagricultural Employment



Unemployment Information (all estimates in thousands)

	Midland MSA				Texas (Actual)				United States (Actual)			
	C.L.F.	Emp.	Unemp.	Rate	C.L.F.	Emp.	Unemp.	Rate	C.L.F.	Emp.	Unemp.	Rate
Jun-18	99.0	96.6	2.4	2.4	13,845.5	13,262.6	582.9	4.2	163,277.0	156,465.0	6,812.0	4.2
May-18	99.1	96.9	2.1	2.1	13,834.3	13,319.1	515.1	3.7	161,765.0	156,009.0	5,756.0	3.6
Jun-17	91.7	88.8	2.9	3.2	13,543.4	12,935.1	608.3	4.5	161,337.0	154,086.0	7,250.0	4.5

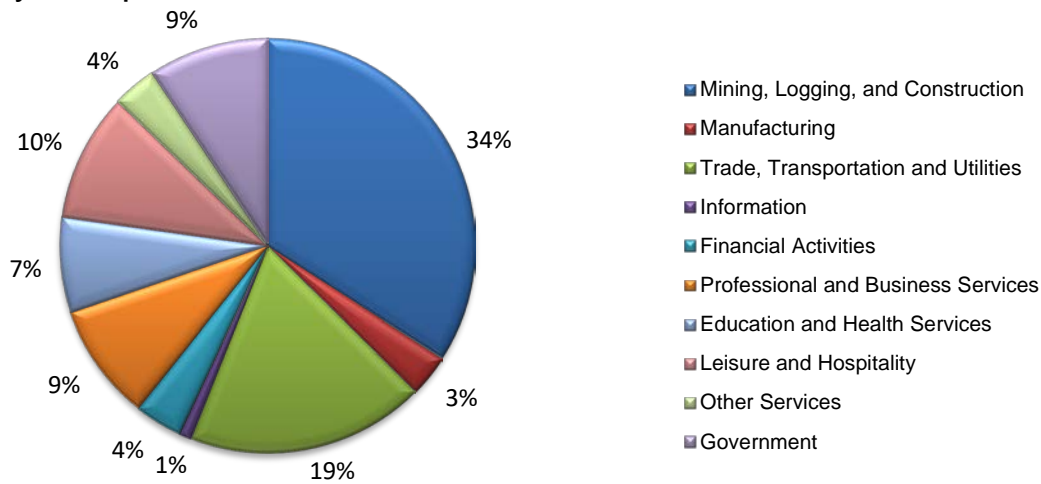
Historical Unemployment Rates



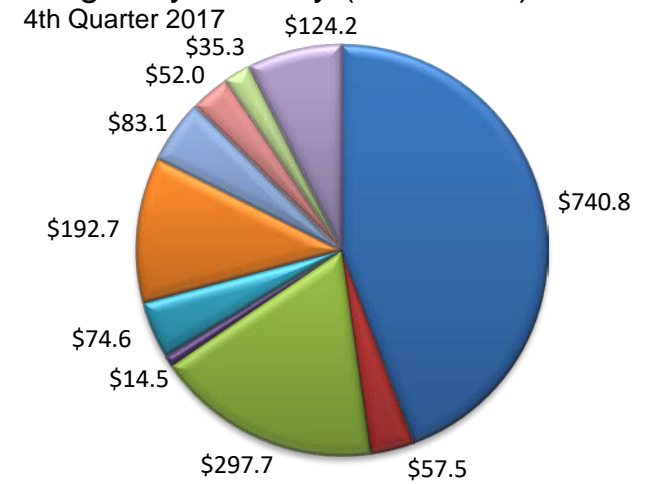
MIDLAND CES								
Area	Series Title	Jun-18	May-18	Jun-17	Monthly Change	Monthly %	Yearly Change	Yearly %
Midland	Total Nonfarm	102,400	102,000	93,500	400	0.4%	8,900	9.5%
Midland	.Total Private	92,700	92,000	83,800	700	0.8%	8,900	10.6%
Midland	.Goods Producing	37,600	37,200	30,700	400	1.1%	6,900	22.5%
Midland	..Mining, Logging and Construction	34,200	33,800	27,500	400	1.2%	6,700	24.4%
Midland	..Manufacturing	3,400	3,400	3,200	0	0.0%	200	6.3%
Midland	..Service-Providing	64,800	64,800	62,800	0	0.0%	2,000	3.2%
Midland	..Private Service Providing	55,100	54,800	53,100	300	0.5%	2,000	3.8%
Midland	..Trade, Transportation, and Utilities	19,400	19,400	18,500	0	0.0%	900	4.9%
Midland	...Wholesale Trade	6,100	6,100	5,500	0	0.0%	600	10.9%
Midland	...Retail Trade	9,400	9,400	9,100	0	0.0%	300	3.3%
Midland	...Transportation, Warehousing, and Utilities	3,900	3,900	3,900	0	0.0%	0	0.0%
Midland	..Information	1,000	1,000	900	0	0.0%	100	11.1%
Midland	..Financial Activities	3,900	3,900	3,800	0	0.0%	100	2.6%
Midland	..Professional and Business Services	9,400	9,300	9,200	100	1.1%	200	2.2%
Midland	..Education and Health Services	7,200	7,500	7,400	-300	-4.0%	-200	-2.7%
Midland	..Leisure and Hospitality	10,500	10,200	9,800	300	2.9%	700	7.1%
Midland	..Other Services	3,700	3,500	3,500	200	5.7%	200	5.7%
Midland	..Government	9,700	10,000	9,700	-300	-3.0%	0	0.0%
Midland	...Federal Government	500	500	600	0	0.0%	-100	-16.7%
Midland	...State Government	600	600	600	0	0.0%	0	0.0%
Midland	...Local Government	8,600	8,900	8,500	-300	-3.4%	100	1.2%

(Martin, Midland)

Industry Composition



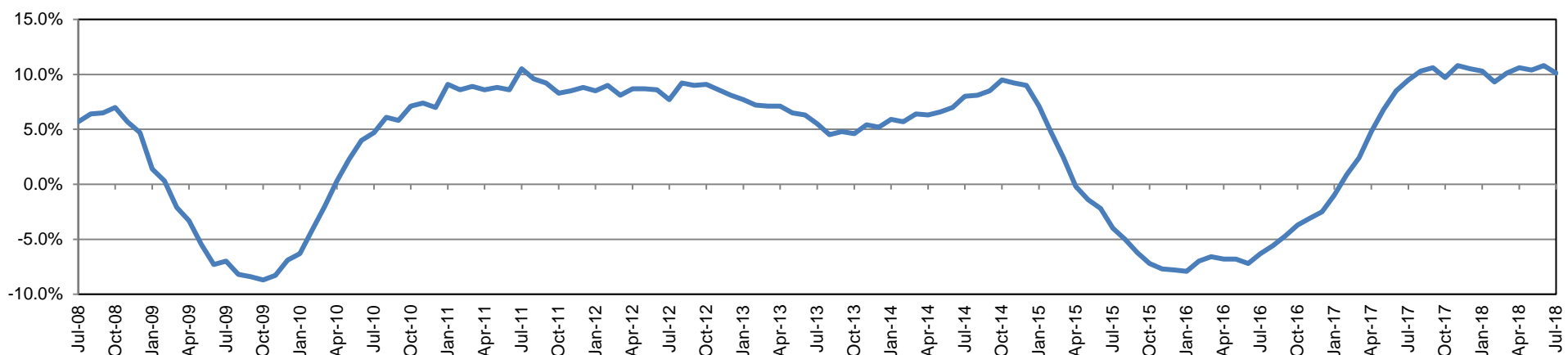
Wages by Industry (in millions)



Employment by Industry

				Monthly Change		Annual Change		Industry Size Class				
	Jul-18	Jun-18	Jul-17	Actual	%	Actual	%	Size Class	Employees per firm	Number of Firms	Employment in Size Class	% Total Employment
Total Nonfarm	104,000	103,600	94,500	400	0.4%	9,500	10.1%	9	1000+	4	7,253	7.4%
Mining, Logging and Construction	35,500	35,200	28,100	300	0.9%	7,400	26.3%	8	500-999	16	11,669	12.0%
Manufacturing	3,400	3,400	3,300	0	0.0%	100	3.0%	7	250-499	26	8,789	9.0%
Trade, Transportation, and Utilities	19,300	19,500	18,800	-200	-1.0%	500	2.7%	6	100-249	128	19,170	19.7%
Information	1,000	1,000	900	0	0.0%	100	11.1%	5	50-99	215	14,962	15.3%
Financial Activities	3,900	3,900	3,900	0	0.0%	0	0.0%	4	20-49	561	16,900	17.3%
Professional and Business Services	9,500	9,500	9,200	0	0.0%	300	3.3%	3	10-19	602	8,322	8.5%
Education and Health Services	7,700	7,300	7,300	400	5.5%	400	5.5%	2	5-9	879	5,813	6.0%
Leisure and Hospitality	10,400	10,500	9,800	-100	-1.0%	600	6.1%	1	1-4	2,304	4,645	4.8%
Other Services	3,600	3,600	3,500	0	0.0%	100	2.9%	0	0	404	0	0.0%
Government	9,700	9,700	9,700	0	0.0%	0	0.0%	Total		5,139	97,523	100.0%

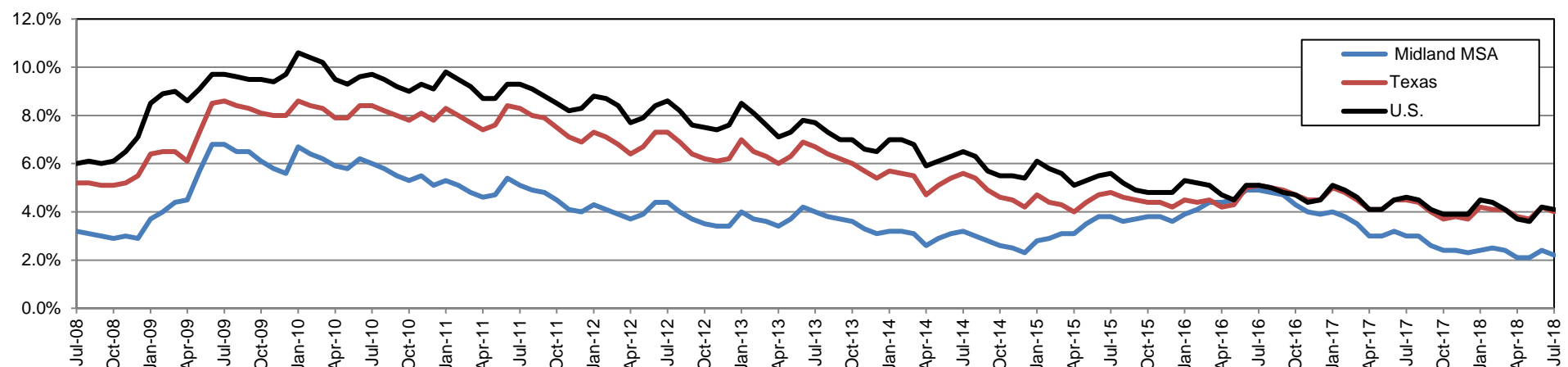
Annual Growth Rate for Total Nonagricultural Employment



Unemployment Information (all estimates in thousands)

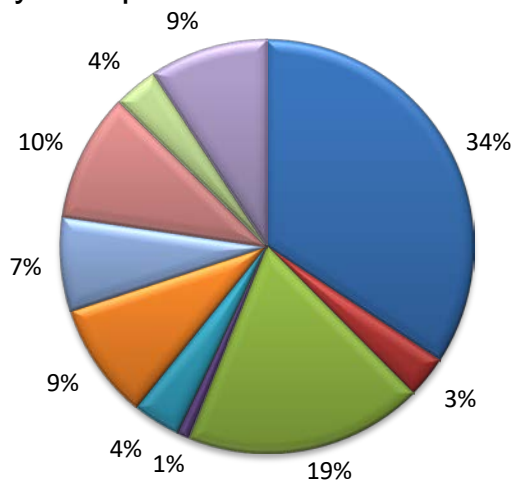
	Midland MSA				Texas (Actual)				United States (Actual)			
	C.L.F.	Emp.	Unemp.	Rate	C.L.F.	Emp.	Unemp.	Rate	C.L.F.	Emp.	Unemp.	Rate
Jul-18	101.2	98.9	2.3	2.2	13,840.5	13,283.9	556.6	4.0	163,734.0	157,004.0	6,730.0	4.1
Jun-18	100.1	97.7	2.4	2.4	13,845.0	13,262.0	583.0	4.2	163,277.0	156,465.0	6,812.0	4.2
Jul-17	93.3	90.5	2.8	3.0	13,571.9	12,967.6	604.2	4.5	161,911.0	154,470.0	7,441.0	4.6

Historical Unemployment Rates



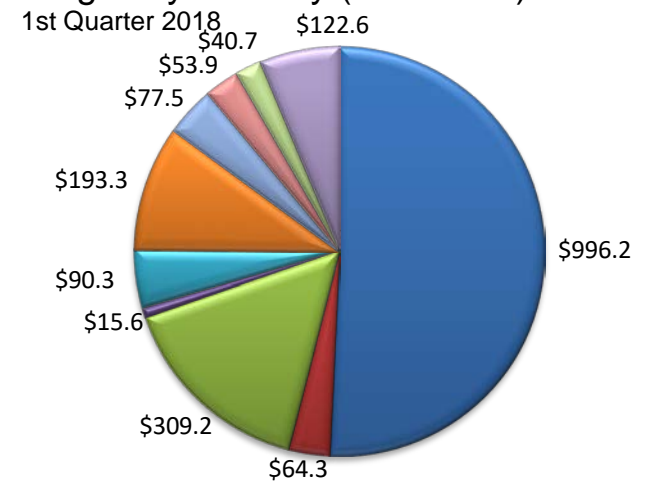
MIDLAND CES								
Area	Series Title	Jul-18	Jun-18	Jul-17	Monthly Change	Monthly %	Yearly Change	Yearly %
Midland	Total Nonfarm	104,000	103,600	94,500	400	0.4%	9,500	10.1%
Midland	.Total Private	94,300	93,900	84,800	400	0.4%	9,500	11.2%
Midland	.Goods Producing	38,900	38,600	31,400	300	0.8%	7,500	23.9%
Midland	..Mining, Logging and Construction	35,500	35,200	28,100	300	0.9%	7,400	26.3%
Midland	..Manufacturing	3,400	3,400	3,300	0	0.0%	100	3.0%
Midland	.Service-Providing	65,100	65,000	63,100	100	0.2%	2,000	3.2%
Midland	.Private Service Providing	55,400	55,300	53,400	100	0.2%	2,000	3.7%
Midland	..Trade, Transportation, and Utilities	19,300	19,500	18,800	-200	-1.0%	500	2.7%
Midland	...Wholesale Trade	6,100	6,100	5,700	0	0.0%	400	7.0%
Midland	...Retail Trade	9,300	9,400	9,200	-100	-1.1%	100	1.1%
Midland	...Transportation, Warehousing, and Utilities	3,900	4,000	3,900	-100	-2.5%	0	0.0%
Midland	..Information	1,000	1,000	900	0	0.0%	100	11.1%
Midland	..Financial Activities	3,900	3,900	3,900	0	0.0%	0	0.0%
Midland	..Professional and Business Services	9,500	9,500	9,200	0	0.0%	300	3.3%
Midland	..Education and Health Services	7,700	7,300	7,300	400	5.5%	400	5.5%
Midland	..Leisure and Hospitality	10,400	10,500	9,800	-100	-1.0%	600	6.1%
Midland	..Other Services	3,600	3,600	3,500	0	0.0%	100	2.9%
Midland	..Government	9,700	9,700	9,700	0	0.0%	0	0.0%
Midland	...Federal Government	500	500	600	0	0.0%	-100	-16.7%
Midland	...State Government	600	600	600	0	0.0%	0	0.0%
Midland	...Local Government	8,600	8,600	8,500	0	0.0%	100	1.2%

Industry Composition



- Mining, Logging, and Construction
- Manufacturing
- Trade, Transportation and Utilities
- Information
- Financial Activities
- Professional and Business Services
- Education and Health Services
- Leisure and Hospitality
- Other Services
- Government

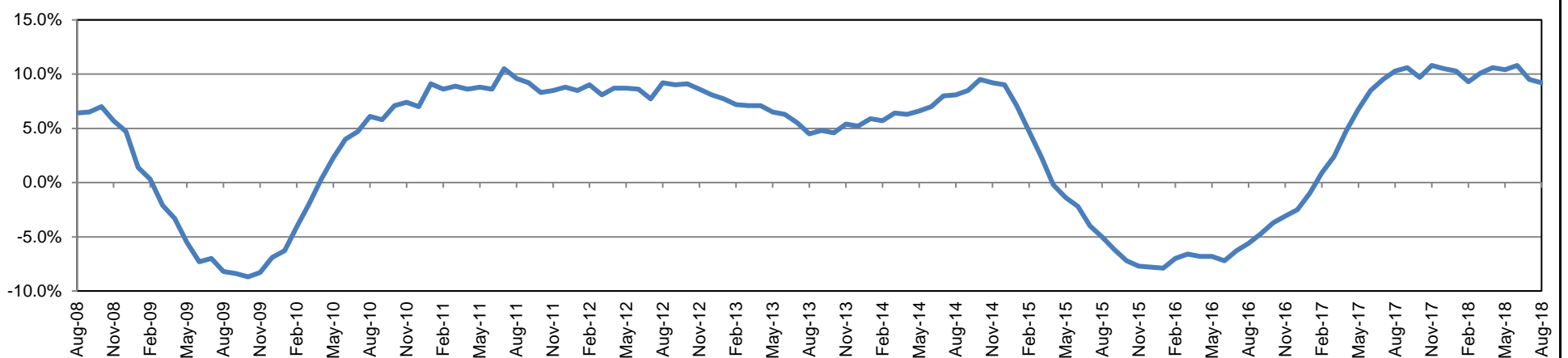
Wages by Industry (in millions)



Employment by Industry

				Monthly Change		Annual Change		Industry Size Class				
	Aug-18	Jul-18	Aug-17	Actual	%	Actual	%	Size Class	Employees per firm	Number of Firms	Employment in Size Class	% Total Employment
Total Nonfarm	104,000	103,500	95,200	500	0.5%	8,800	9.2%	9	1000+	6	9,762	9.6%
Mining, Logging and Construction	35,600	35,200	28,600	400	1.1%	7,000	24.5%	8	500-999	13	9,481	9.3%
Manufacturing	3,400	3,400	3,300	0	0.0%	100	3.0%	7	250-499	30	10,637	10.4%
Trade, Transportation, and Utilities	19,400	19,300	19,000	100	0.5%	400	2.1%	6	100-249	124	19,062	18.7%
Information	1,000	1,000	900	0	0.0%	100	11.1%	5	50-99	230	16,293	16.0%
Financial Activities	3,900	3,900	3,900	0	0.0%	0	0.0%	4	20-49	582	17,414	17.1%
Professional and Business Services	9,500	9,500	9,200	0	0.0%	300	3.3%	3	10-19	642	8,842	8.7%
Education and Health Services	7,600	7,400	7,500	200	2.7%	100	1.3%	2	5-9	877	5,809	5.7%
Leisure and Hospitality	10,400	10,400	9,800	0	0.0%	600	6.1%	1	1-4	2,268	4,589	4.5%
Other Services	3,600	3,700	3,500	-100	-2.7%	100	2.9%	0	0	445	0	0.0%
Government	9,600	9,700	9,500	-100	-1.0%	100	1.1%	Total		5,217	101,889	100.0%

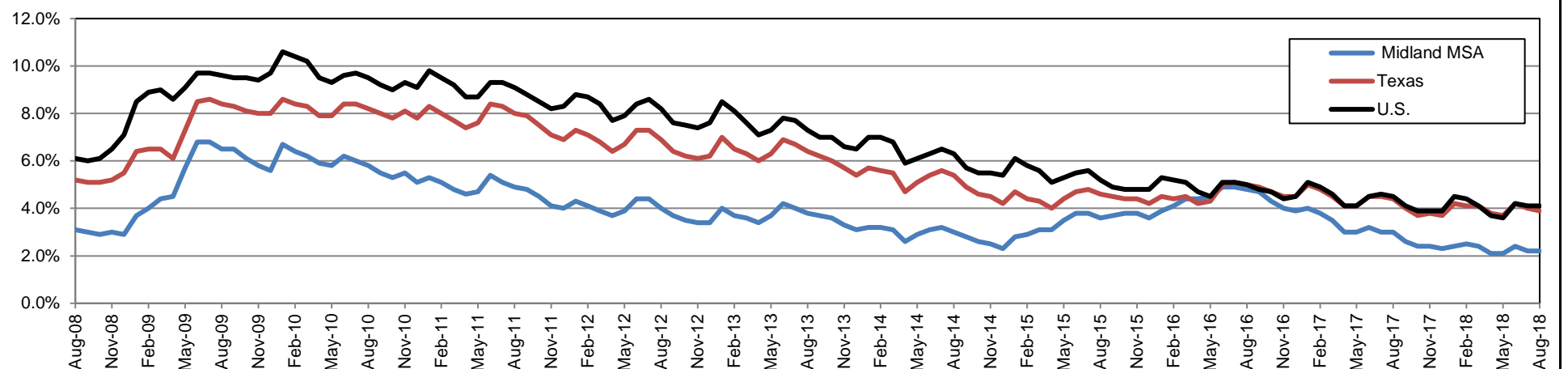
Annual Growth Rate for Total Nonagricultural Employment



Unemployment Information (all estimates in thousands)

	Midland MSA				Texas (Actual)				United States (Actual)			
	C.L.F.	Emp.	Unemp.	Rate	C.L.F.	Emp.	Unemp.	Rate	C.L.F.	Emp.	Unemp.	Rate
Aug-18	100.2	98.0	2.3	2.2	13,751.9	13,212.4	539.4	3.9	161,909.0	155,539.0	6,370.0	3.9
Jul-18	100.7	98.5	2.3	2.2	13,840.8	13,284.2	556.6	4.0	163,734.0	157,004.0	6,730.0	4.1
Aug-17	93.3	90.6	2.8	3.0	13,522.8	12,921.8	601.0	4.4	160,863.0	153,576.0	7,287.0	4.5

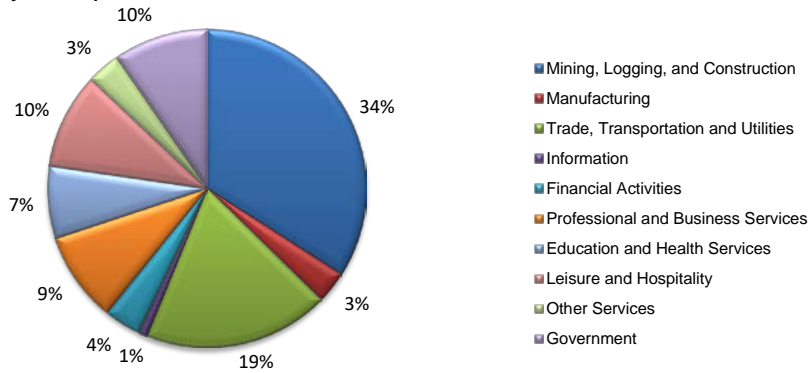
Historical Unemployment Rates



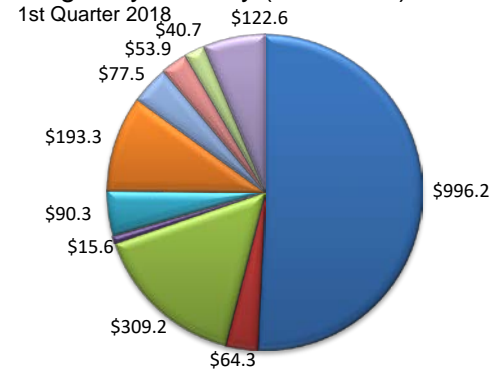
MIDLAND CES								
Area	Series Title	Aug-18	Jul-18	Aug-17	Monthly Change	Monthly %	Yearly Change	Yearly %
Midland	Total Nonfarm	104,000	103,500	95,200	500	0.5%	8,800	9.2%
Midland	.Total Private	94,400	93,800	85,700	600	0.6%	8,700	10.2%
Midland	.Goods Producing	39,000	38,600	31,900	400	1.0%	7,100	22.3%
Midland	..Mining, Logging and Construction	35,600	35,200	28,600	400	1.1%	7,000	24.5%
Midland	..Manufacturing	3,400	3,400	3,300	0	0.0%	100	3.0%
Midland	.Service-Providing	65,000	64,900	63,300	100	0.2%	1,700	2.7%
Midland	.Private Service Providing	55,400	55,200	53,800	200	0.4%	1,600	3.0%
Midland	..Trade, Transportation, and Utilities	19,400	19,300	19,000	100	0.5%	400	2.1%
Midland	...Wholesale Trade	6,200	6,100	5,700	100	1.6%	500	8.8%
Midland	...Retail Trade	9,300	9,300	9,300	0	0.0%	0	0.0%
Midland	...Transportation, Warehousing, and Utilities	3,900	3,900	4,000	0	0.0%	-100	-2.5%
Midland	..Information	1,000	1,000	900	0	0.0%	100	11.1%
Midland	..Financial Activities	3,900	3,900	3,900	0	0.0%	0	0.0%
Midland	..Professional and Business Services	9,500	9,500	9,200	0	0.0%	300	3.3%
Midland	..Education and Health Services	7,600	7,400	7,500	200	2.7%	100	1.3%
Midland	..Leisure and Hospitality	10,400	10,400	9,800	0	0.0%	600	6.1%
Midland	..Other Services	3,600	3,700	3,500	-100	-2.7%	100	2.9%
Midland	..Government	9,600	9,700	9,500	-100	-1.0%	100	1.1%
Midland	...Federal Government	600	500	600	100	20.0%	0	0.0%
Midland	...State Government	600	600	600	0	0.0%	0	0.0%
Midland	...Local Government	8,400	8,600	8,300	-200	-2.3%	100	1.2%

(Martin, Midland)

Industry Composition



Wages by Industry (in millions)



Employment by Industry

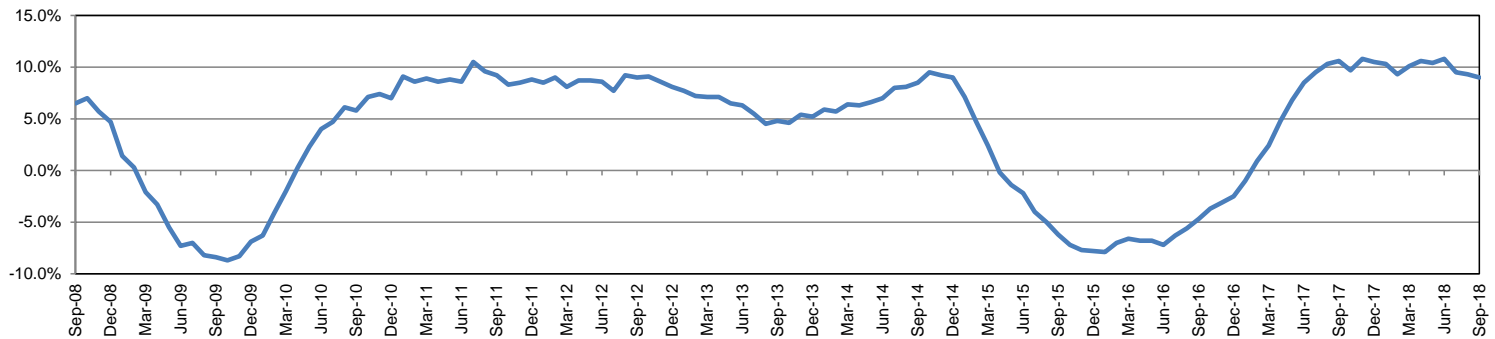
	Sep-18	Aug-18	Sep-17	Monthly Change		Annual Change	
				Actual	%	Actual	%
Total Nonfarm	104,300	104,100	95,700	200	0.2%	8,600	9.0%
Mining, Logging and Construction	35,500	35,800	28,900	-300	-0.8%	6,600	22.8%
Manufacturing	3,400	3,400	3,300	0	0.0%	100	3.0%
Trade, Transportation, and Utilities	19,700	19,400	18,800	300	1.5%	900	4.8%
Information	900	900	900	0	0.0%	0	0.0%
Financial Activities	3,900	3,900	3,900	0	0.0%	0	0.0%
Professional and Business Services	9,600	9,500	9,400	100	1.1%	200	2.1%
Education and Health Services	7,600	7,600	7,500	0	0.0%	100	1.3%
Leisure and Hospitality	10,200	10,400	9,600	-200	-1.9%	600	6.3%
Other Services	3,500	3,600	3,400	-100	-2.8%	100	2.9%
Government	10,000	9,600	10,000	400	4.2%	0	0.0%

Industry Size Class

March 2018

Size Class	Employees per firm	Number of Firms	Employment in Size Class	% Total Employment
9	1000+	6	9,762	9.6%
8	500-999	13	9,481	9.3%
7	250-499	30	10,637	10.4%
6	100-249	124	19,062	18.7%
5	50-99	230	16,293	16.0%
4	20-49	582	17,414	17.1%
3	10-19	642	8,842	8.7%
2	5-9	877	5,809	5.7%
1	1-4	2,268	4,589	4.5%
0	0	445	0	0.0%
Total		5,217	101,889	100.0%

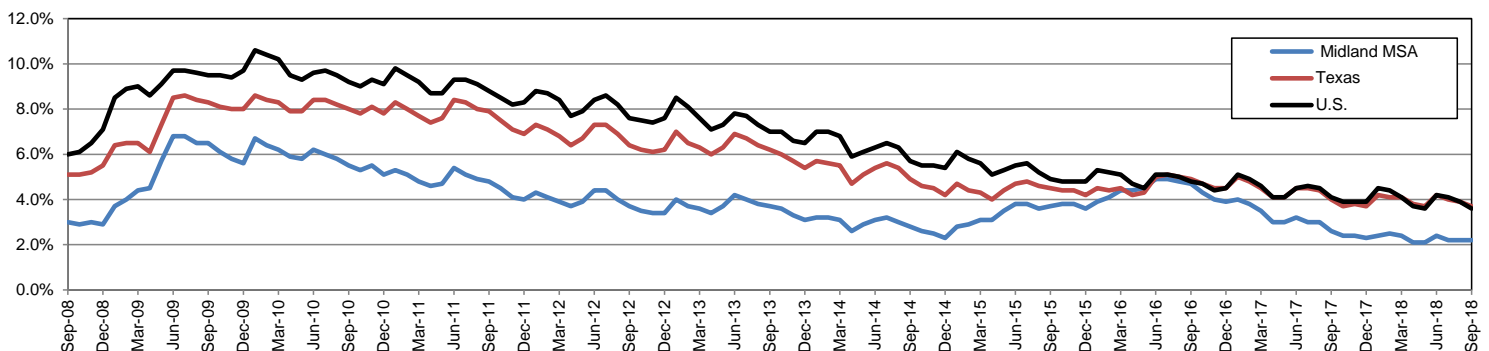
Annual Growth Rate for Total Nonagricultural Employment



Unemployment Information (all estimates in thousands)

	Midland MSA				Texas (Actual)				United States (Actual)			
	C.L.F.	Emp.	Unemp.	Rate	C.L.F.	Emp.	Unemp.	Rate	C.L.F.	Emp.	Unemp.	Rate
Sep-18	100.7	98.6	2.2	2.2	13,802.3	13,285.7	516.6	3.7	161,958.0	156,191.0	5,766.0	3.6
Aug-18	100.4	98.2	2.3	2.2	13,750.1	13,210.7	539.4	3.9	161,909.0	155,539.0	6,370.0	3.9
Sep-17	94.3	91.9	2.5	2.6	13,619.5	13,070.6	548.8	4.0	161,049.0	154,494.0	6,556.0	4.1

Historical Unemployment Rates

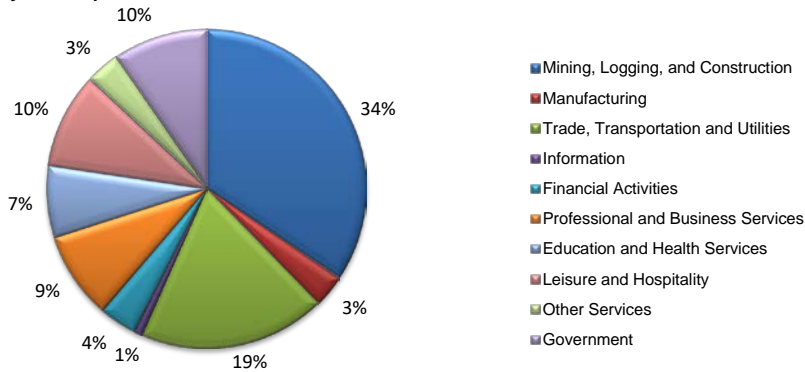


MIDLAND CES

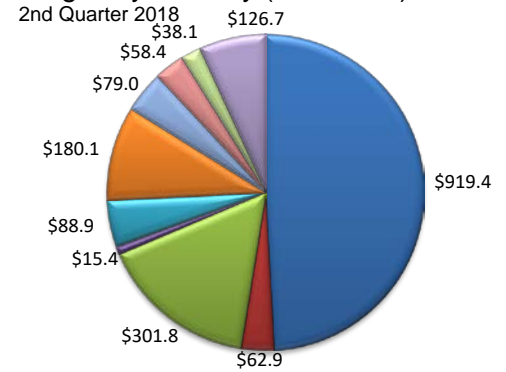
Area	Series Title	Sep-18	Aug-18	Sep-17	Monthly Change	Monthly %	Yearly Change	Yearly %
Midland	Total Nonfarm	104,300	104,100	95,700	200	0.2%	8,600	9.0%
Midland	.Total Private	94,300	94,500	85,700	-200	-0.2%	8,600	10.0%
Midland	.Goods Producing	38,900	39,200	32,200	-300	-0.8%	6,700	20.8%
Midland	..Mining, Logging and Construction	35,500	35,800	28,900	-300	-0.8%	6,600	22.8%
Midland	..Manufacturing	3,400	3,400	3,300	0	0.0%	100	3.0%
Midland	.Service-Providing	65,400	64,900	63,500	500	0.8%	1,900	3.0%
Midland	.Private Service Providing	55,400	55,300	53,500	100	0.2%	1,900	3.6%
Midland	..Trade, Transportation, and Utilities	19,700	19,400	18,800	300	1.5%	900	4.8%
Midland	...Wholesale Trade	6,200	6,200	5,800	0	0.0%	400	6.9%
Midland	...Retail Trade	9,500	9,300	9,100	200	2.2%	400	4.4%
Midland	...Transportation, Warehousing, and Utilities	4,000	3,900	3,900	100	2.6%	100	2.6%
Midland	..Information	900	900	900	0	0.0%	0	0.0%
Midland	..Financial Activities	3,900	3,900	3,900	0	0.0%	0	0.0%
Midland	..Professional and Business Services	9,600	9,500	9,400	100	1.1%	200	2.1%
Midland	..Education and Health Services	7,600	7,600	7,500	0	0.0%	100	1.3%
Midland	..Leisure and Hospitality	10,200	10,400	9,600	-200	-1.9%	600	6.3%
Midland	..Other Services	3,500	3,600	3,400	-100	-2.8%	100	2.9%
Midland	..Government	10,000	9,600	10,000	400	4.2%	0	0.0%
Midland	...Federal Government	600	600	600	0	0.0%	0	0.0%
Midland	...State Government	600	600	600	0	0.0%	0	0.0%
Midland	...Local Government	8,800	8,400	8,800	400	4.8%	0	0.0%

(Martin, Midland)

Industry Composition



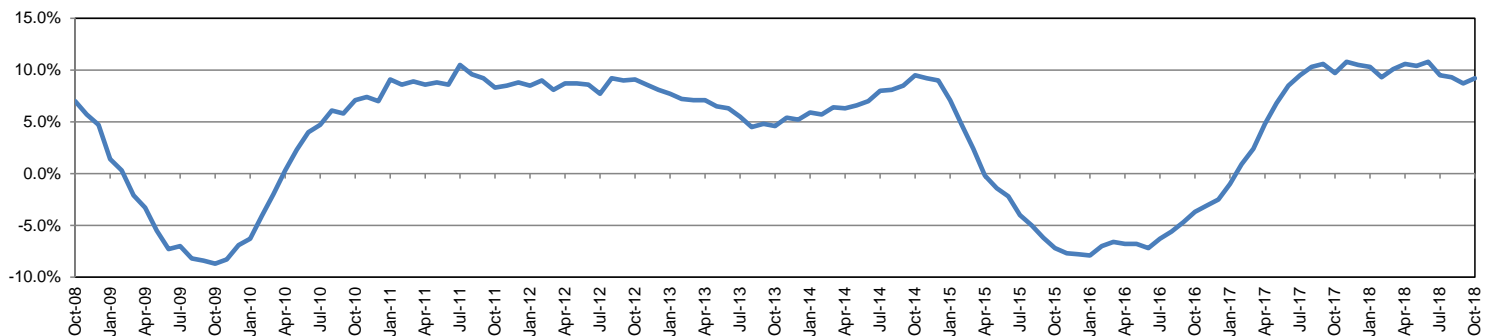
Wages by Industry (in millions)



Employment by Industry

	Oct-18	Sep-18	Oct-17	Monthly Change		Annual Change		Industry Size Class				
				Actual	%	Actual	%	Size Class	Employees per firm	Number of Firms	Employment in Size Class	% Total Employment
Total Nonfarm	104,600	104,000	95,800	600	0.6%	8,800	9.2%	9	1000+	7	10,988	10.3%
Mining, Logging and Construction	36,000	35,200	28,800	800	2.3%	7,200	25.0%	8	500-999	13	9,542	9.0%
Manufacturing	3,400	3,400	3,300	0	0.0%	100	3.0%	7	250-499	35	12,124	11.4%
Trade, Transportation, and Utilities	19,800	19,700	19,100	100	0.5%	700	3.7%	6	100-249	134	20,275	19.1%
Information	900	900	900	0	0.0%	0	0.0%	5	50-99	231	15,978	15.0%
Financial Activities	4,000	3,900	3,900	100	2.6%	100	2.6%	4	20-49	599	18,232	17.2%
Professional and Business Services	9,200	9,500	9,300	-300	-3.2%	-100	-1.1%	3	10-19	643	8,784	8.3%
Education and Health Services	7,600	7,600	7,700	0	0.0%	-100	-1.3%	2	5-9	846	5,619	5.3%
Leisure and Hospitality	10,100	10,200	9,400	-100	-1.0%	700	7.4%	1	1-4	2,294	4,673	4.4%
Other Services	3,600	3,600	3,400	0	0.0%	200	5.9%	0	0	449	0	0.0%
Government	10,000	10,000	10,000	0	0.0%	0	0.0%	Total		5,251	106,215	100.0%

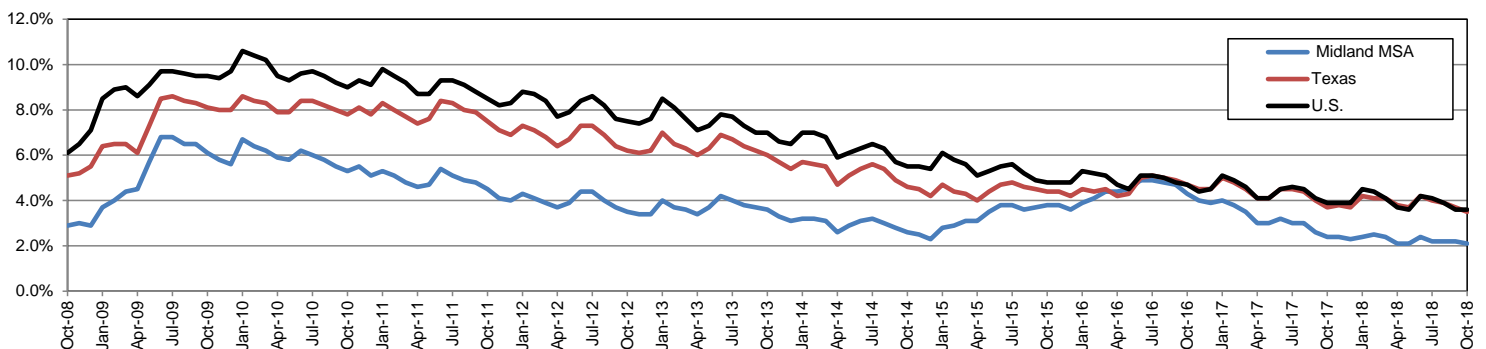
Annual Growth Rate for Total Nonagricultural Employment



Unemployment Information (all estimates in thousands)

	Midland MSA				Texas (Actual)				United States (Actual)			
	C.L.F.	Emp.	Unemp.	Rate	C.L.F.	Emp.	Unemp.	Rate	C.L.F.	Emp.	Unemp.	Rate
Oct-18	100.9	98.8	2.1	2.1	13,869.5	13,390.6	478.9	3.5	162,723.0	165,952.0	5,711.0	3.5
Sep-18	100.4	98.3	2.2	2.2	13,802.1	13,285.1	517.0	3.7	161,958.0	156,191.0	5,766.0	3.6
Oct-17	93.2	91.0	2.2	2.4	13,536.2	13,034.6	501.6	3.7	160,465.0	154,223.0	6,242.0	3.9

Historical Unemployment Rates



MIDLAND CES								
Area	Series Title	Oct-18	Sep-18	Oct-17	Monthly Change	Monthly %	Yearly Change	Yearly %
Midland	Total Nonfarm	104,600	104,000	95,800	600	0.6%	8,800	9.2%
Midland	.Total Private	94,600	94,000	85,800	600	0.6%	8,800	10.3%
Midland	.Goods Producing	39,400	38,600	32,100	800	2.1%	7,300	22.7%
Midland	..Mining, Logging and Construction	36,000	35,200	28,800	800	2.3%	7,200	25.0%
Midland	..Manufacturing	3,400	3,400	3,300	0	0.0%	100	3.0%
Midland	.Service-Providing	65,200	65,400	63,700	-200	-0.3%	1,500	2.4%
Midland	.Private Service Providing	55,200	55,400	53,700	-200	-0.4%	1,500	2.8%
Midland	..Trade, Transportation, and Utilities	19,800	19,700	19,100	100	0.5%	700	3.7%
Midland	...Wholesale Trade	6,200	6,200	5,900	0	0.0%	300	5.1%
Midland	...Retail Trade	9,500	9,500	9,300	0	0.0%	200	2.2%
Midland	...Transportation, Warehousing, and Utilities	4,100	4,000	3,900	100	2.5%	200	5.1%
Midland	..Information	900	900	900	0	0.0%	0	0.0%
Midland	..Financial Activities	4,000	3,900	3,900	100	2.6%	100	2.6%
Midland	..Professional and Business Services	9,200	9,500	9,300	-300	-3.2%	-100	-1.1%
Midland	..Education and Health Services	7,600	7,600	7,700	0	0.0%	-100	-1.3%
Midland	..Leisure and Hospitality	10,100	10,200	9,400	-100	-1.0%	700	7.4%
Midland	..Other Services	3,600	3,600	3,400	0	0.0%	200	5.9%
Midland	..Government	10,000	10,000	10,000	0	0.0%	0	0.0%
Midland	...Federal Government	600	600	600	0	0.0%	0	0.0%
Midland	...State Government	600	600	600	0	0.0%	0	0.0%
Midland	...Local Government	8,800	8,800	8,800	0	0.0%	0	0.0%