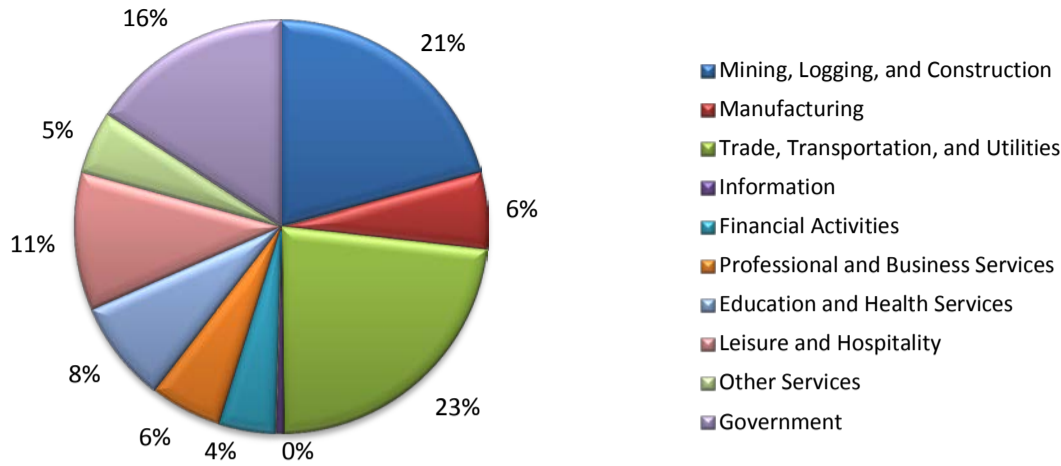


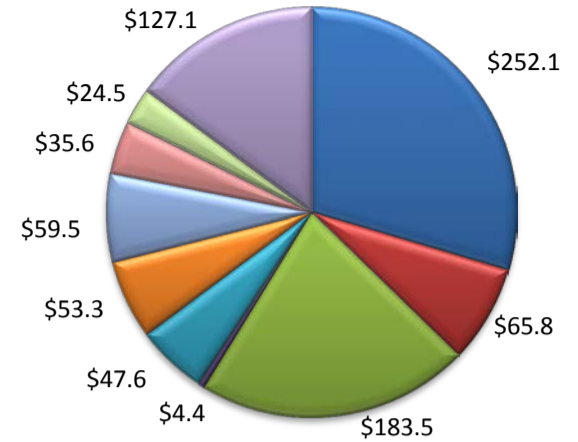
(Ector)

Industry Composition



Wages by Industry (in millions)

3rd Quarter 2016



Employment by Industry

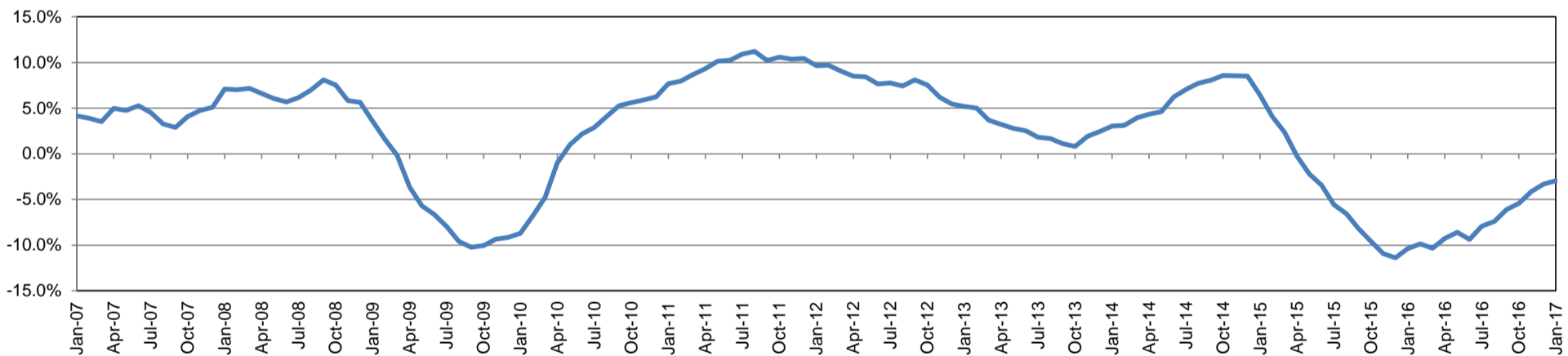
	Jan-17	Dec-16	Jan-16	Monthly Change		Annual Change	
				Actual	%	Actual	%
Total Nonfarm	69,400	70,100	71,500	-700	-1.0%	-2,100	-2.9%
Mining, Logging, and Construction	14,400	14,500	15,600	-100	-0.7%	-1,200	-7.7%
Manufacturing	4,200	4,200	4,600	0	0.0%	-400	-8.7%
Trade, Transportation, and Utilities	16,000	16,400	16,700	-400	-2.4%	-700	-4.2%
Information	400	400	400	0	0.0%	0	0.0%
Financial Activities	3,100	3,100	3,200	0	0.0%	-100	-3.1%
Professional and Business Services	3,900	3,600	4,000	300	8.3%	-100	-2.5%
Education and Health Services	5,500	5,600	5,300	-100	-1.8%	200	3.8%
Leisure and Hospitality	7,500	7,700	7,600	-200	-2.6%	-100	-1.3%
Other Services	3,400	3,400	3,600	0	0.0%	-200	-5.6%
Government	11,000	11,200	10,500	-200	-1.8%	500	4.8%

Industry Size Class

September 2016

Size Class	Employees per firm	Number of Firms	Employment in Size Class	% Total Employment
9	1000+	5	11,335	16.9%
8	500-999	7	5,402	8.1%
7	250-499	17	5,742	8.6%
6	100-249	59	8,386	12.5%
5	50-99	141	9,508	14.2%
4	20-49	416	12,581	18.8%
3	10-19	504	6,847	10.2%
2	5-9	666	4,444	6.6%
1	1-4	1,194	2,640	3.9%
0	0	381	0	0.0%
Total		3,390	66,885	100.0%

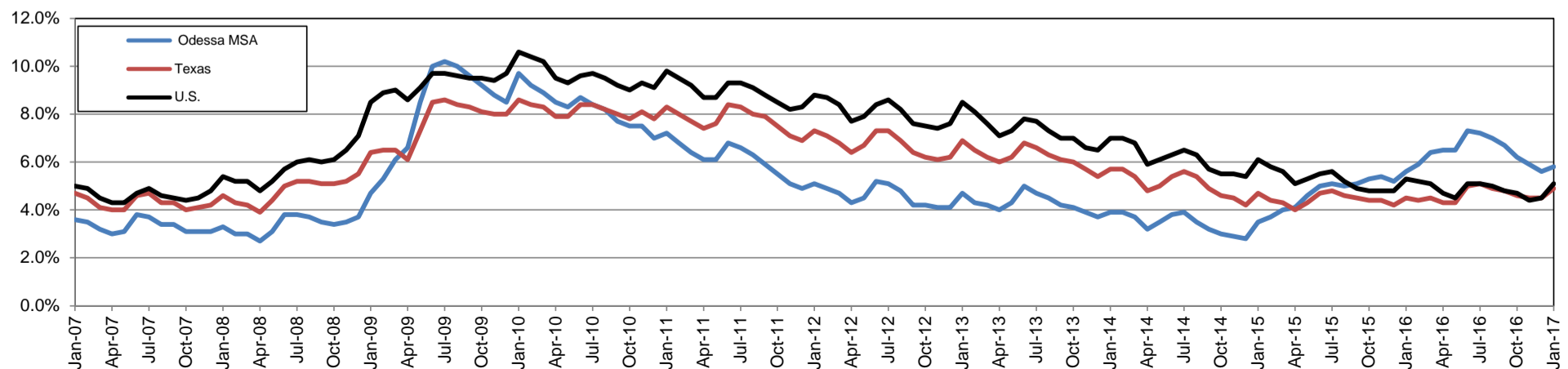
Annual Growth Rate for Total Nonagricultural Employment



Unemployment Information (all estimates in thousands)

	Odessa MSA				Texas (Actual)				United States (Actual)			
	C.L.F.	Emp.	Unemp.	Rate	C.L.F.	Emp.	Unemp.	Rate	C.L.F.	Emp.	Unemp.	Rate
Jan-17	75.0	70.6	4.4	5.8	13,358.0	12,697.1	660.9	4.9	158,676.0	150,527.0	8,149.0	5.1
Dec-16	74.9	70.7	4.2	5.6	13,353.3	12,747.3	606.0	4.5	158,968.0	151,798.0	7,170.0	4.5
Jan-16	77.1	72.8	4.3	5.6	13,113.0	12,521.5	591.5	4.5	157,347.0	149,037.0	8,309.0	5.3

Historical Unemployment Rates

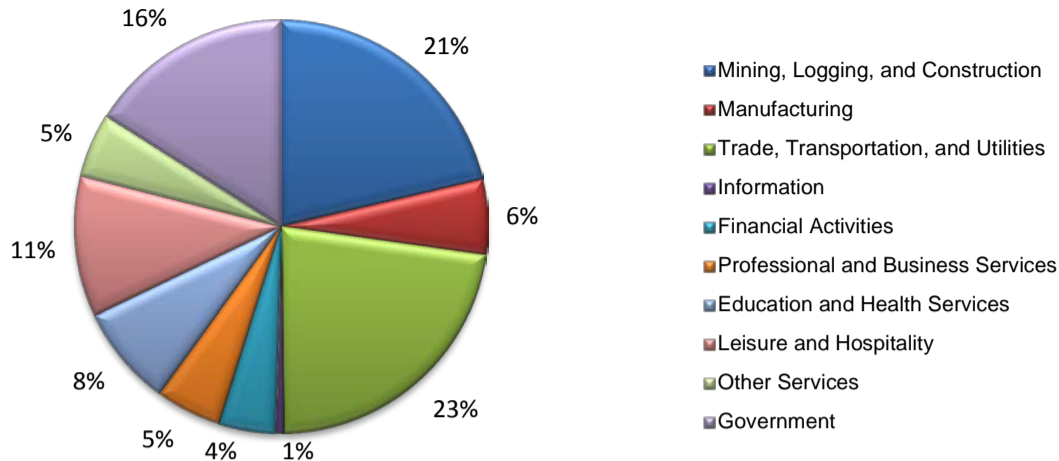


ODESSA CES

Area Title	NAICS Industry	Jan-17	Dec-16	Jan-16	Monthly Change	Monthly %	Yearly Change	Yearly %
Odessa	Total Nonfarm	69,400	70,100	71,500	-700	-1.0%	-2,100	-2.9%
Odessa	Total Private	58,400	58,900	61,000	-500	-0.8%	-2,600	-4.3%
Odessa	Goods Producing	18,600	18,700	20,200	-100	-0.5%	-1,600	-7.9%
Odessa	.Mining, Logging, and Construction	14,400	14,500	15,600	-100	-0.7%	-1,200	-7.7%
Odessa	.Manufacturing	4,200	4,200	4,600	0	0.0%	-400	-8.7%
Odessa	Service Providing	50,800	51,400	51,300	-600	-1.2%	-500	-1.0%
Odessa	.Private Service Providing	39,800	40,200	40,800	-400	-1.0%	-1,000	-2.5%
Odessa	..Trade, Transportation, and Utilities	16,000	16,400	16,700	-400	-2.4%	-700	-4.2%
Odessa	...Wholesale Trade	5,200	5,200	5,600	0	0.0%	-400	-7.1%
Odessa	...Retail Trade	8,000	8,300	8,200	-300	-3.6%	-200	-2.4%
Odessa	...Transportation, Warehousing, and Utilities	2,800	2,900	2,900	-100	-3.4%	-100	-3.4%
Odessa	..Information	400	400	400	0	0.0%	0	0.0%
Odessa	..Financial Activities	3,100	3,100	3,200	0	0.0%	-100	-3.1%
Odessa	..Professional and Business Services	3,900	3,600	4,000	300	8.3%	-100	-2.5%
Odessa	..Educational and Health Services	5,500	5,600	5,300	-100	-1.8%	200	3.8%
Odessa	..Leisure and Hospitality	7,500	7,700	7,600	-200	-2.6%	-100	-1.3%
Odessa	..Other Services	3,400	3,400	3,600	0	0.0%	-200	-5.6%
Odessa	Government	11,000	11,200	10,500	-200	-1.8%	500	4.8%
Odessa	.Federal Government	200	200	200	0	0.0%	0	0.0%
Odessa	.State Government	1,700	1,700	1,700	0	0.0%	0	0.0%
Odessa	.Local Government	9,100	9,300	8,600	-200	-2.2%	500	5.8%

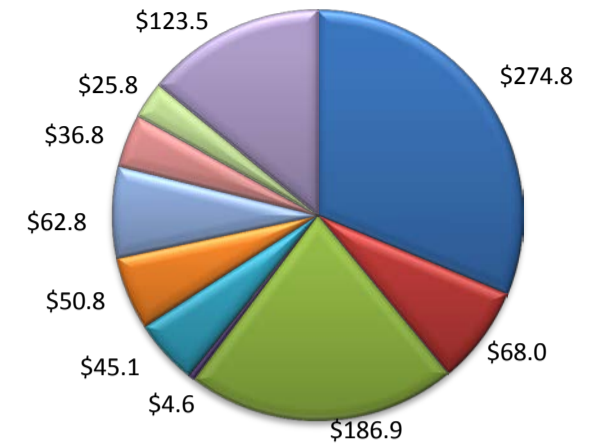
(Ector)

Industry Composition



Wages by Industry (in millions)

3rd Quarter 2016



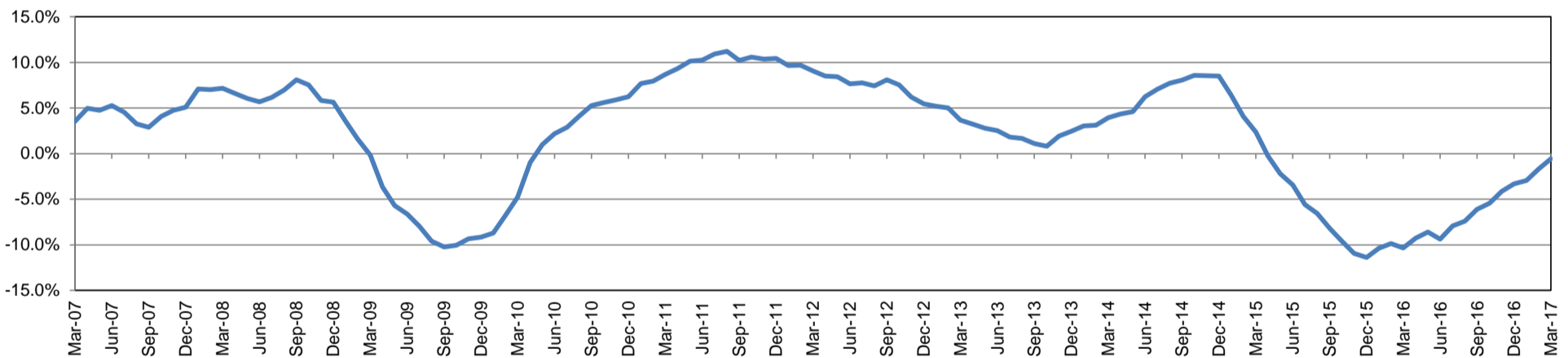
Employment by Industry

	Mar-17	Feb-17	Mar-16	Monthly Change		Annual Change	
				Actual	%	Actual	%
Total Nonfarm	69,800	70,100	70,200	-300	-0.4%	-400	-0.6%
Mining, Logging, and Construction	14,900	14,900	15,000	0	0.0%	-100	-0.7%
Manufacturing	4,100	4,100	4,300	0	0.0%	-200	-4.7%
Trade, Transportation, and Utilities	15,800	16,000	16,400	-200	-1.3%	-600	-3.7%
Information	400	400	400	0	0.0%	0	0.0%
Financial Activities	3,100	3,100	3,200	0	0.0%	-100	-3.1%
Professional and Business Services	3,600	3,700	3,900	-100	-2.7%	-300	-7.7%
Education and Health Services	5,500	5,500	5,300	0	0.0%	200	3.8%
Leisure and Hospitality	7,700	7,600	7,600	100	1.3%	100	1.3%
Other Services	3,500	3,500	3,600	0	0.0%	-100	-2.8%
Government	11,200	11,300	10,500	-100	-0.9%	700	6.7%

Industry Size Class September 2016

Size Class	Employees per firm	Number of Firms	Employment in Size Class	% Total Employment
9	1000+	5	11,335	16.9%
8	500-999	7	5,402	8.1%
7	250-499	17	5,742	8.6%
6	100-249	59	8,386	12.5%
5	50-99	141	9,508	14.2%
4	20-49	416	12,581	18.8%
3	10-19	504	6,847	10.2%
2	5-9	666	4,444	6.6%
1	1-4	1,194	2,640	3.9%
0	0	381	0	0.0%
Total		3,390	66,885	100.0%

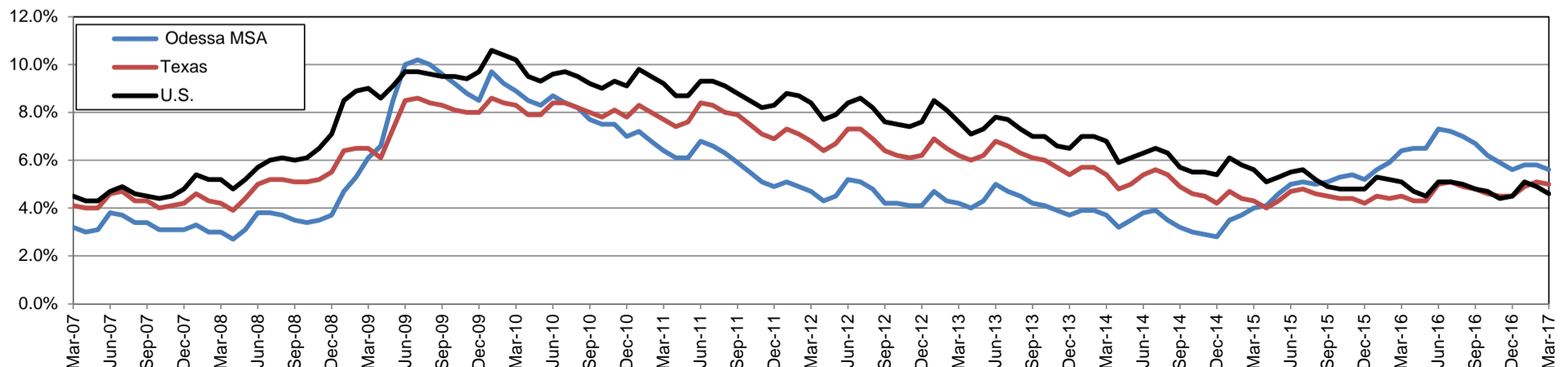
Annual Growth Rate for Total Nonagricultural Employment



Unemployment Information (all estimates in thousands)

	Odessa MSA				Texas (Actual)				United States (Actual)			
	C.L.F.	Emp.	Unemp.	Rate	C.L.F.	Emp.	Unemp.	Rate	C.L.F.	Emp.	Unemp.	Rate
Mar-17	75.2	71.0	4.2	5.6	13,513.7	12,838.1	675.6	5.0	159,912.0	152,628.0	7,284.0	4.6
Feb-17	75.7	71.3	4.4	5.8	13,471.3	12,777.8	693.5	5.1	159,482.0	151,594.0	7,887.0	4.9
Mar-16	76.6	71.7	4.9	6.4	13,239.7	12,648.9	590.8	4.5	158,854.0	150,738.0	8,116.0	5.1

Historical Unemployment Rates

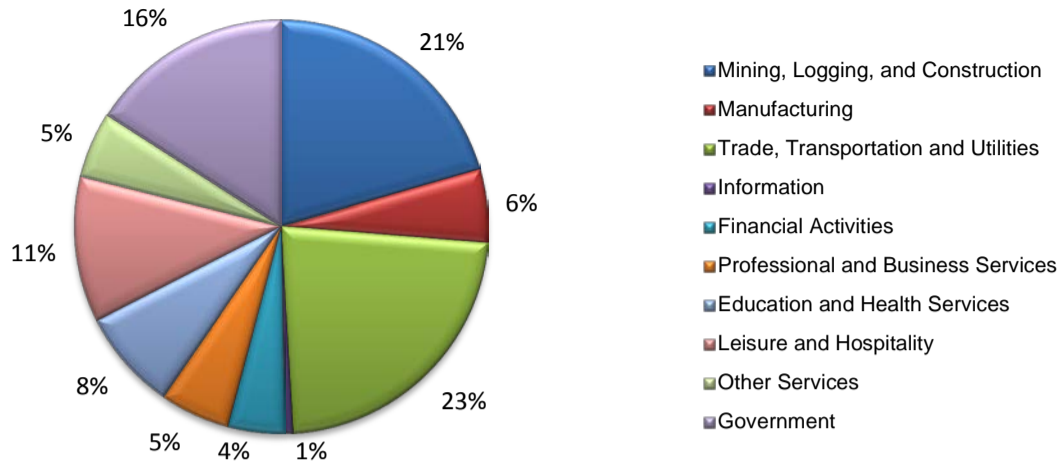


Odessa CES

Area Title	NAICS Industry	Mar-17	Feb-17	Mar-16	Monthly Change	Monthly %	Yearly Change	Yearly %
Odessa	Total Nonfarm	69,800	70,100	70,200	-300	-0.4%	-400	-0.6%
Odessa	Total Private	58,600	58,800	59,700	-200	-0.3%	-1,100	-1.8%
Odessa	Goods Producing	19,000	19,000	19,300	0	0.0%	-300	-1.6%
Odessa	.Mining, Logging, and Construction	14,900	14,900	15,000	0	0.0%	-100	-0.7%
Odessa	.Manufacturing	4,100	4,100	4,300	0	0.0%	-200	-4.7%
Odessa	Service Providing	50,800	51,100	50,900	-300	-0.6%	-100	-0.2%
Odessa	.Private Service Providing	39,600	39,800	40,400	-200	-0.5%	-800	-2.0%
Odessa	..Trade, Transportation, and Utilities	15,800	16,000	16,400	-200	-1.3%	-600	-3.7%
Odessa	...Wholesale Trade	5,200	5,200	5,400	0	0.0%	-200	-3.7%
Odessa	...Retail Trade	7,800	7,900	8,200	-100	-1.3%	-400	-4.9%
Odessa	...Transportation, Warehousing, and Utilities	2,800	2,900	2,800	-100	-3.4%	0	0.0%
Odessa	..Information	400	400	400	0	0.0%	0	0.0%
Odessa	..Financial Activities	3,100	3,100	3,200	0	0.0%	-100	-3.1%
Odessa	..Professional and Business Services	3,600	3,700	3,900	-100	-2.7%	-300	-7.7%
Odessa	..Educational and Health Services	5,500	5,500	5,300	0	0.0%	200	3.8%
Odessa	..Leisure and Hospitality	7,700	7,600	7,600	100	1.3%	100	1.3%
Odessa	..Other Services	3,500	3,500	3,600	0	0.0%	-100	-2.8%
Odessa	Government	11,200	11,300	10,500	-100	-0.9%	700	6.7%
Odessa	.Federal Government	200	200	200	0	0.0%	0	0.0%
Odessa	.State Government	1,900	1,900	1,800	0	0.0%	100	5.6%
Odessa	.Local Government	9,100	9,200	8,500	-100	-1.1%	600	7.1%

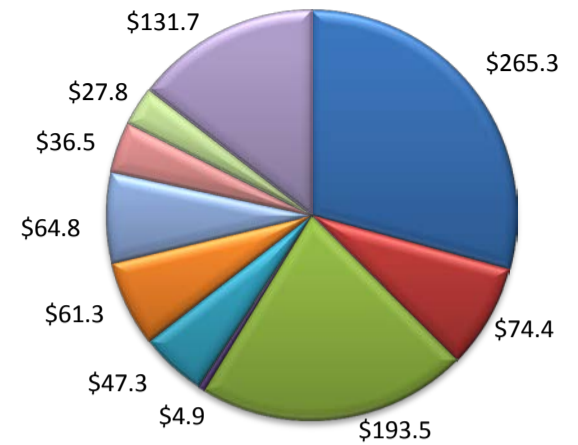
(Ector)

Industry Composition



Wages by Industry (in millions)

4th Quarter 2016



Employment by Industry

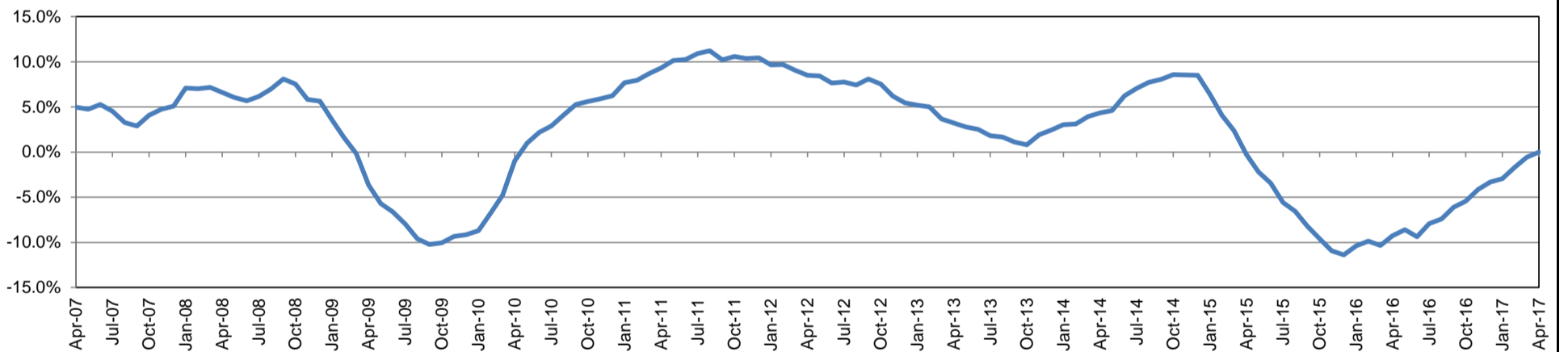
	Apr-17	Mar-17	Apr-16	Monthly Change		Annual Change	
				Actual	%	Actual	%
Total Nonfarm	69,600	69,800	69,600	-200	-0.3%	0	0.0%
Mining, Logging, and Construction	14,300	14,800	14,600	-500	-3.4%	-300	-2.1%
Manufacturing	4,000	4,100	4,100	-100	-2.4%	-100	-2.4%
Trade, Transportation, and Utilities	15,900	15,800	16,200	100	0.6%	-300	-1.9%
Information	400	400	400	0	0.0%	0	0.0%
Financial Activities	3,100	3,100	3,200	0	0.0%	-100	-3.1%
Professional and Business Services	3,800	3,600	3,800	200	5.6%	0	0.0%
Education and Health Services	5,500	5,500	5,300	0	0.0%	200	3.8%
Leisure and Hospitality	7,900	7,800	7,700	100	1.3%	200	2.6%
Other Services	3,600	3,500	3,500	100	2.9%	100	2.9%
Government	11,100	11,200	10,800	-100	-0.9%	300	2.8%

Industry Size Class

December 2016

Size Class	Employees per firm	Number of Firms	Employment in Size Class	% Total Employment
9	1000+	6	12,331	18.2%
8	500-999	6	4,494	6.6%
7	250-499	17	5,743	8.5%
6	100-249	62	9,053	13.4%
5	50-99	135	9,240	13.6%
4	20-49	418	12,777	18.9%
3	10-19	520	7,097	10.5%
2	5-9	649	4,303	6.4%
1	1-4	1,223	2,685	4.0%
0	0	345	0	0.0%
Total		3,381	67,723	100.0%

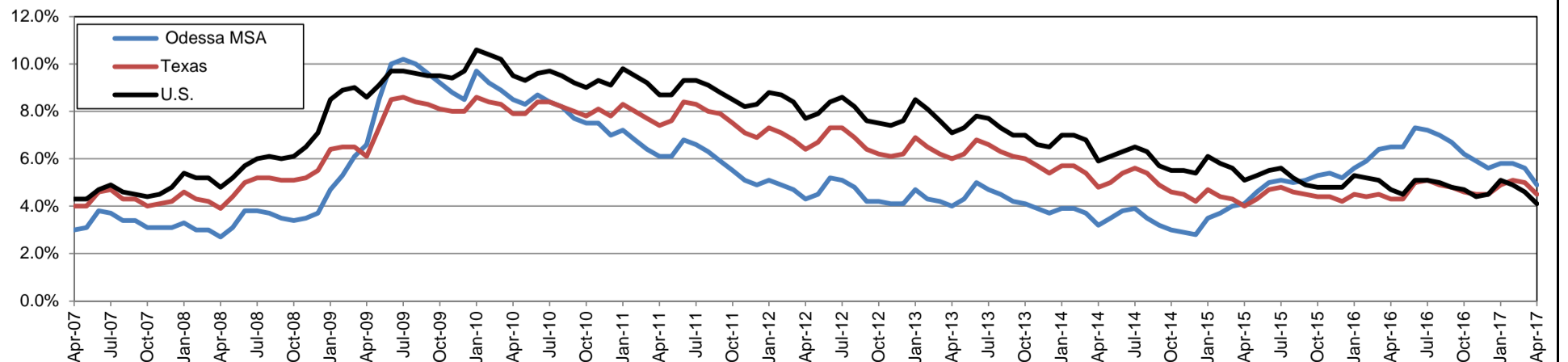
Annual Growth Rate for Total Nonagricultural Employment



Unemployment Information (all estimates in thousands)

	Odessa MSA				Texas (Actual)				United States (Actual)			
	C.L.F.	Emp.	Unemp.	Rate	C.L.F.	Emp.	Unemp.	Rate	C.L.F.	Emp.	Unemp.	Rate
Apr-17	74.8	71.1	3.7	4.9	13,506.7	12,895.0	611.7	4.5	159,817.0	153,262.0	6,555.0	4.1
Mar-17	75.2	71.0	4.2	5.6	13,514.6	12,838.9	675.6	5.0	159,912.0	152,628.0	7,284.0	4.6
Apr-16	76.1	71.1	5.0	6.5	13,236.9	12,672.9	564.0	4.3	158,488.0	151,075.0	7,413.0	4.7

Historical Unemployment Rates

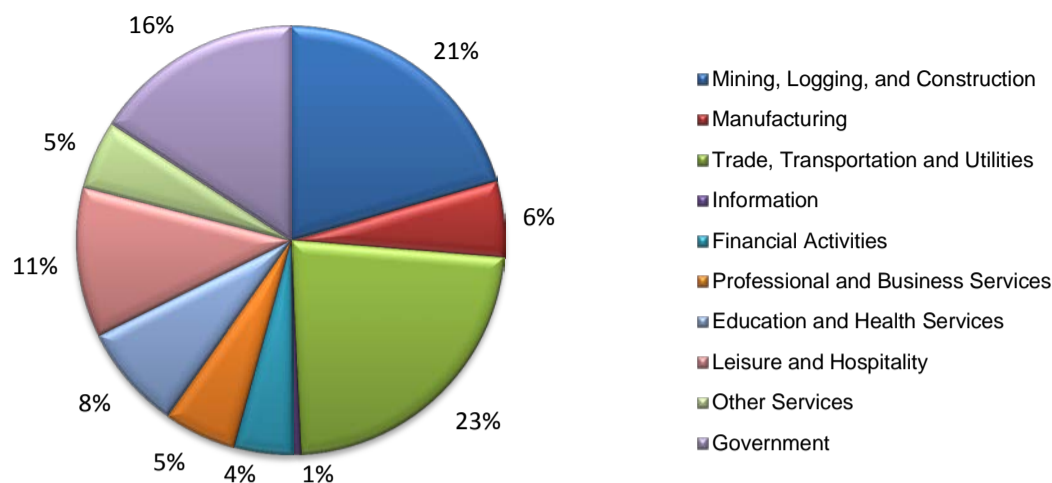


ODESSA CES

Area Title	NAICS Industry	Apr-17	Mar-17	Apr-16	Monthly Change	Monthly %	Yearly Change	Yearly %
Odessa	Total Nonfarm	69,600	69,800	69,600	-200	-0.3%	0	0.0%
Odessa	Total Private	58,500	58,600	58,800	-100	-0.2%	-300	-0.5%
Odessa	Goods Producing	18,300	18,900	18,700	-600	-3.2%	-400	-2.1%
Odessa	.Mining, Logging, and Construction	14,300	14,800	14,600	-500	-3.4%	-300	-2.1%
Odessa	.Manufacturing	4,000	4,100	4,100	-100	-2.4%	-100	-2.4%
Odessa	Service Providing	51,300	50,900	50,900	400	0.8%	400	0.8%
Odessa	.Private Service Providing	40,200	39,700	40,100	500	1.3%	100	0.2%
Odessa	..Trade, Transportation, and Utilities	15,900	15,800	16,200	100	0.6%	-300	-1.9%
Odessa	...Wholesale Trade	5,200	5,200	5,300	0	0.0%	-100	-1.9%
Odessa	...Retail Trade	8,000	7,800	8,200	200	2.6%	-200	-2.4%
Odessa	...Transportation, Warehousing, and Utilities	2,700	2,800	2,700	-100	-3.6%	0	0.0%
Odessa	..Information	400	400	400	0	0.0%	0	0.0%
Odessa	..Financial Activities	3,100	3,100	3,200	0	0.0%	-100	-3.1%
Odessa	..Professional and Business Services	3,800	3,600	3,800	200	5.6%	0	0.0%
Odessa	..Educational and Health Services	5,500	5,500	5,300	0	0.0%	200	3.8%
Odessa	..Leisure and Hospitality	7,900	7,800	7,700	100	1.3%	200	2.6%
Odessa	..Other Services	3,600	3,500	3,500	100	2.9%	100	2.9%
Odessa	Government	11,100	11,200	10,800	-100	-0.9%	300	2.8%
Odessa	.Federal Government	200	200	200	0	0.0%	0	0.0%
Odessa	.State Government	1,500	1,900	1,700	-400	-21.1%	-200	-11.8%
Odessa	.Local Government	9,400	9,100	8,900	300	3.3%	500	5.6%

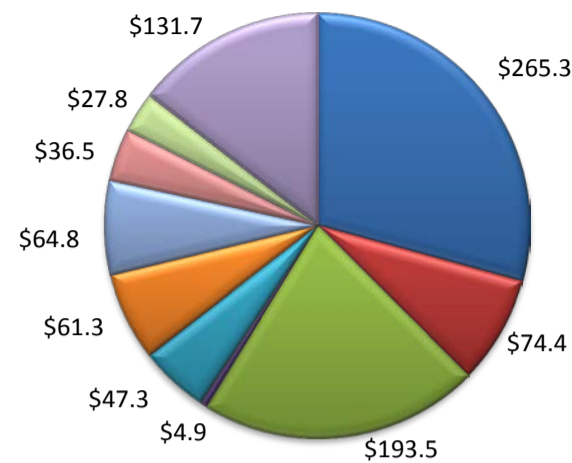
(Ector)

Industry Composition



Wages by Industry (in millions)

4th Quarter 2016



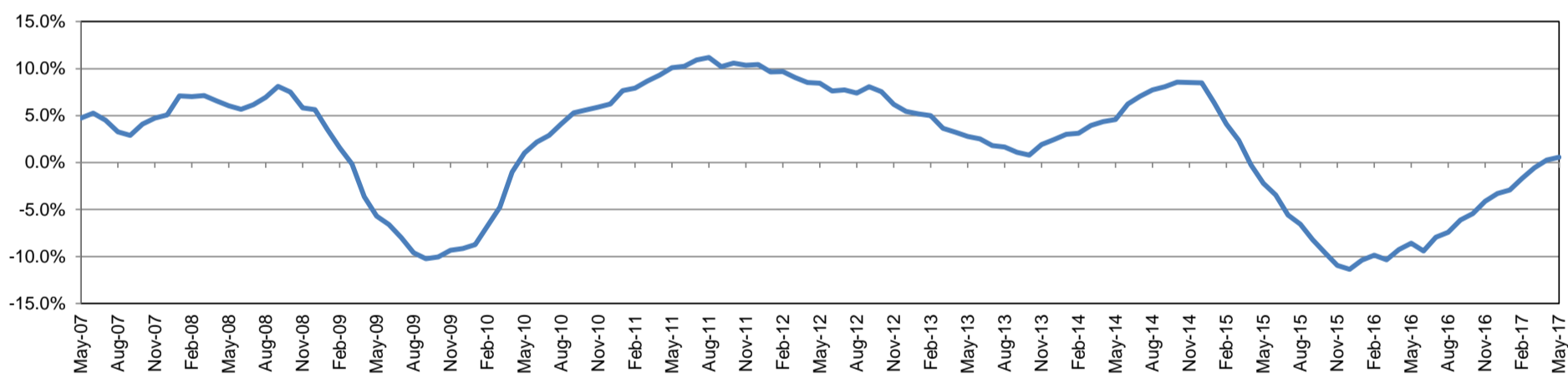
Employment by Industry

	May-17	Apr-17	May-16	Monthly Change		Annual Change	
				Actual	%	Actual	%
Total Nonfarm	69,600	69,800	69,200	-200	-0.3%	400	0.6%
Mining, Logging, and Construction	14,300	14,500	14,100	-200	-1.4%	200	1.4%
Manufacturing	4,000	4,000	4,100	0	0.0%	-100	-2.4%
Trade, Transportation, and Utilities	16,000	15,800	16,100	200	1.3%	-100	-0.6%
Information	400	400	400	0	0.0%	0	0.0%
Financial Activities	3,100	3,100	3,200	0	0.0%	-100	-3.1%
Professional and Business Service:	3,800	3,700	3,700	100	2.7%	100	2.7%
Education and Health Services	5,500	5,600	5,300	-100	-1.8%	200	3.8%
Leisure and Hospitality	7,900	7,900	7,900	0	0.0%	0	0.0%
Other Services	3,600	3,700	3,600	-100	-2.7%	0	0.0%
Government	11,000	11,100	10,800	-100	-0.9%	200	1.9%

Industry Size Class December 2016

Size Class	Employees per firm	Number of Firms	Employment in Size Class	% Total Employment
9	1000+	6	12,331	18.2%
8	500-999	6	4,494	6.6%
7	250-499	17	5,743	8.5%
6	100-249	62	9,053	13.4%
5	50-99	135	9,240	13.6%
4	20-49	418	12,777	18.9%
3	10-19	520	7,097	10.5%
2	5-9	649	4,303	6.4%
1	1-4	1,223	2,685	4.0%
0	0	345	0	0.0%
Total		3,381	67,723	100.0%

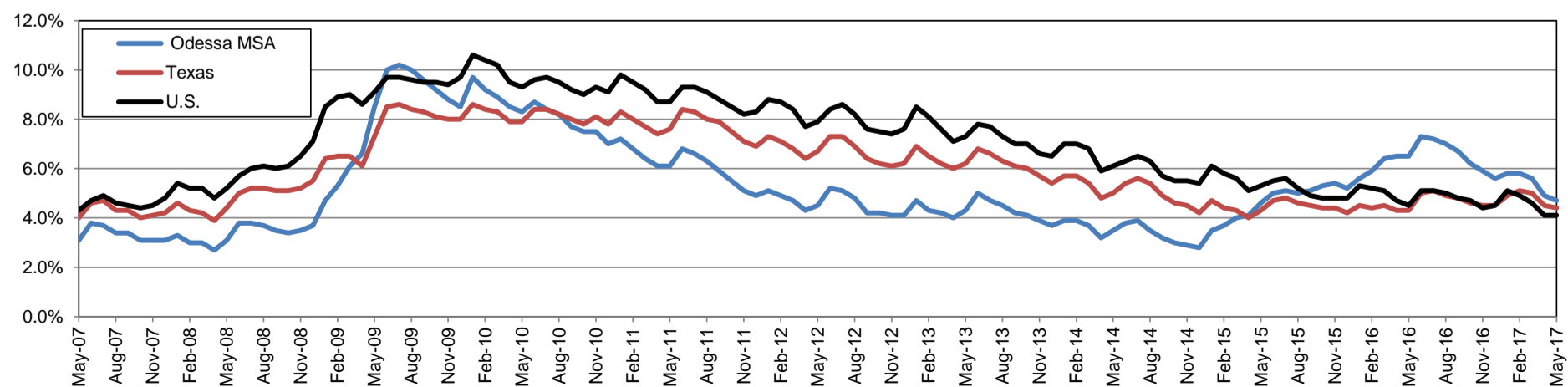
Annual Growth Rate for Total Nonagricultural Employment



Unemployment Information (all estimates in thousands)

	Odessa MSA				Texas (Actual)				United States (Actual)			
	C.L.F.	Emp.	Unemp.	Rate	C.L.F.	Emp.	Unemp.	Rate	C.L.F.	Emp.	Unemp.	Rate
May-17	74.0	70.5	3.4	4.7	13,449.2	12,857.2	592.0	4.4	159,979.0	153,407.0	6,572.0	4.1
Apr-17	74.8	71.1	3.7	4.9	13,506.9	12,895.1	611.7	4.5	159,817.0	153,262.0	6,555.0	4.1
May-16	75.2	70.3	4.9	6.5	13,245.5	12,679.1	566.4	4.3	158,800.0	151,594.0	7,207.0	4.5

Historical Unemployment Rates

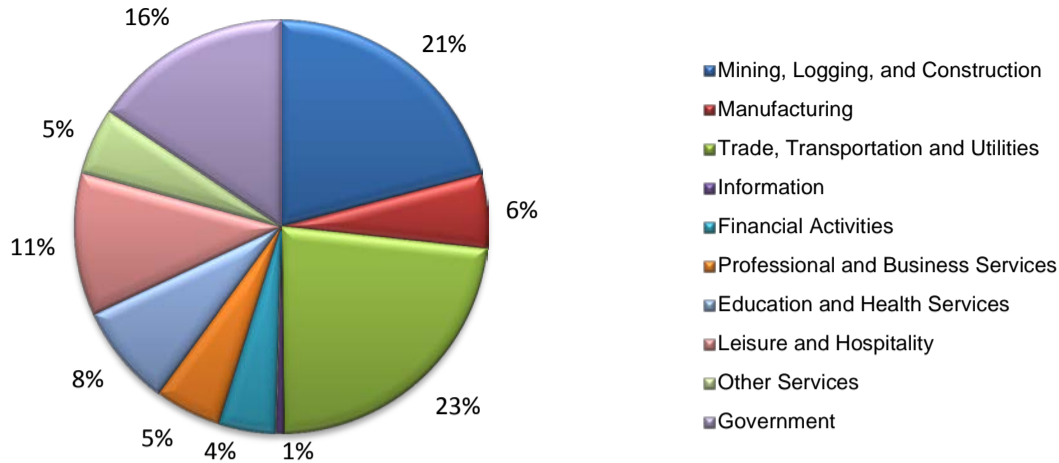


ODESSA CES

Area Title	NAICS Industry	May-17	Apr-17	May-17	Monthly Change	Monthly %	Yearly Change	Yearly %
Odessa	Total Nonfarm	69,600	69,800	69,200	-200	-0.3%	400	0.6%
Odessa	Total Private	58,600	58,700	58,400	-100	-0.2%	200	0.3%
Odessa	Goods Producing	18,300	18,500	18,200	-200	-1.1%	100	0.5%
Odessa	.Mining, Logging, and Construction	14,300	14,500	14,100	-200	-1.4%	200	1.4%
Odessa	.Manufacturing	4,000	4,000	4,100	0	0.0%	-100	-2.4%
Odessa	Service Providing	51,300	51,300	51,000	0	0.0%	300	0.6%
Odessa	.Private Service Providing	40,300	40,200	40,200	100	0.2%	100	0.2%
Odessa	..Trade, Transportation, and Utilities	16,000	15,800	16,100	200	1.3%	-100	-0.6%
Odessa	...Wholesale Trade	5,200	5,200	5,200	0	0.0%	0	0.0%
Odessa	...Retail Trade	8,000	7,900	8,200	100	1.3%	-200	-2.4%
Odessa	...Transportation, Warehousing, and Utilities	2,800	2,700	2,700	100	3.7%	100	3.7%
Odessa	..Information	400	400	400	0	0.0%	0	0.0%
Odessa	..Financial Activities	3,100	3,100	3,200	0	0.0%	-100	-3.1%
Odessa	..Professional and Business Services	3,800	3,700	3,700	100	2.7%	100	2.7%
Odessa	..Educational and Health Services	5,500	5,600	5,300	-100	-1.8%	200	3.8%
Odessa	..Leisure and Hospitality	7,900	7,900	7,900	0	0.0%	0	0.0%
Odessa	..Other Services	3,600	3,700	3,600	-100	-2.7%	0	0.0%
Odessa	Government	11,000	11,100	10,800	-100	-0.9%	200	1.9%
Odessa	.Federal Government	200	200	200	0	0.0%	0	0.0%
Odessa	.State Government	1,500	1,500	1,700	0	0.0%	-200	-11.8%
Odessa	.Local Government	9,300	9,400	8,900	-100	-1.1%	400	4.5%

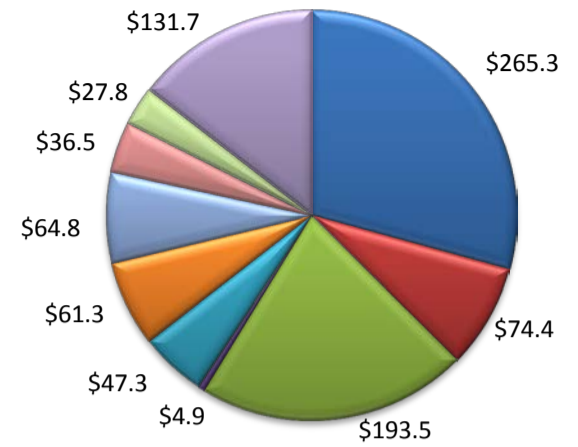
(Ector)

Industry Composition



Wages by Industry (in millions)

4th Quarter 2016



Employment by Industry

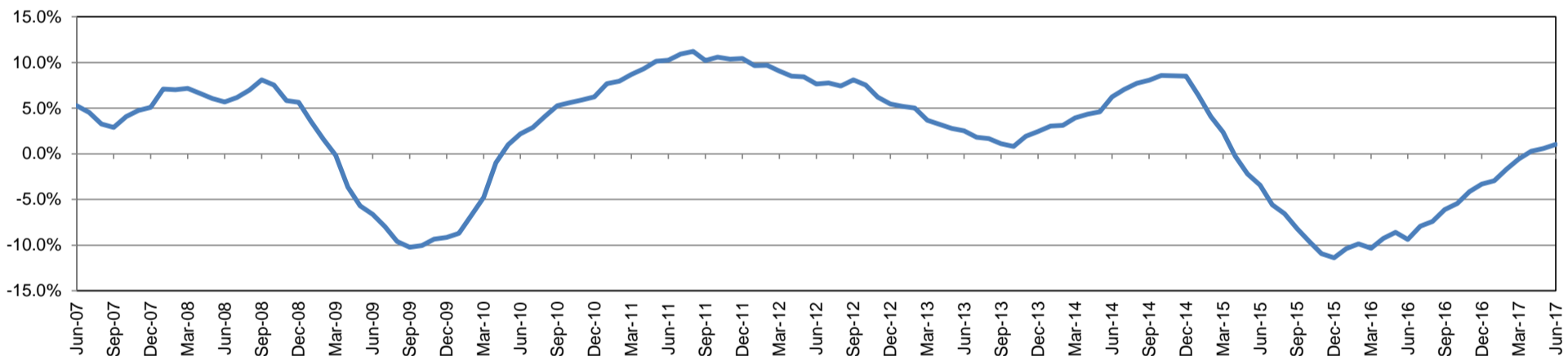
	Jun-17	May-17	Jun-16	Monthly Change		Annual Change	
				Actual	%	Actual	%
Total Nonfarm	69,200	69,600	68,500	-400	-0.6%	700	1.0%
Mining, Logging, and Construction	14,500	14,300	14,200	200	1.4%	300	2.1%
Manufacturing	4,000	4,000	4,000	0	0.0%	0	0.0%
Trade, Transportation, and Utilities	16,000	16,000	15,800	0	0.0%	200	1.3%
Information	400	400	400	0	0.0%	0	0.0%
Financial Activities	3,100	3,100	3,200	0	0.0%	-100	-3.1%
Professional and Business Services	3,600	3,800	3,700	-200	-5.3%	-100	-2.7%
Education and Health Services	5,500	5,500	5,300	0	0.0%	200	3.8%
Leisure and Hospitality	7,700	7,900	7,800	-200	-2.5%	-100	-1.3%
Other Services	3,600	3,600	3,600	0	0.0%	0	0.0%
Government	10,800	11,000	10,500	-200	-1.8%	300	2.9%

Industry Size Class

December 2016

Size Class	Employees per firm	Number of Firms	Employment in Size Class	% Total Employment
9	1000+	6	12,331	18.2%
8	500-999	6	4,494	6.6%
7	250-499	17	5,743	8.5%
6	100-249	62	9,053	13.4%
5	50-99	135	9,240	13.6%
4	20-49	418	12,777	18.9%
3	10-19	520	7,097	10.5%
2	5-9	649	4,303	6.4%
1	1-4	1,223	2,685	4.0%
0	0	345	0	0.0%
Total		3,381	67,723	100.0%

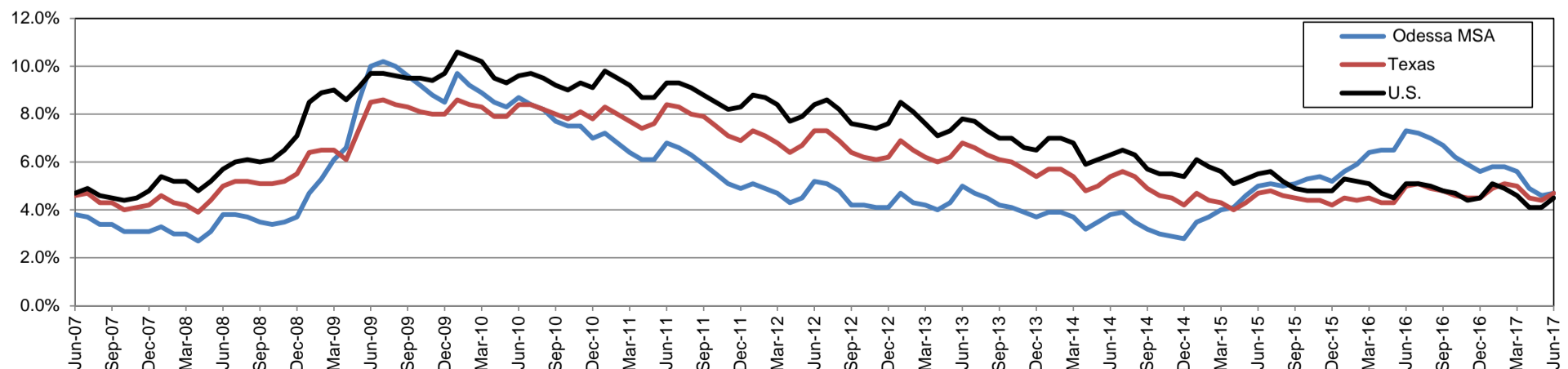
Annual Growth Rate for Total Nonagricultural Employment



Unemployment Information (all estimates in thousands)

	Odessa MSA				Texas (Actual)				United States (Actual)			
	C.L.F.	Emp.	Unemp.	Rate	C.L.F.	Emp.	Unemp.	Rate	C.L.F.	Emp.	Unemp.	Rate
Jun-17	73.7	70.2	3.4	4.7	13,464.3	12,833.3	631.1	4.7	161,337.0	154,086.0	7,250.0	4.5
May-17	74.1	70.6	3.4	4.6	13,450.0	12,858.0	592.0	4.4	159,979.0	153,407.0	6,572.0	4.1
Jun-16	75.3	69.8	5.5	7.3	13,319.7	12,656.7	662.9	5.0	160,135.0	151,990.0	8,144.0	5.1

Historical Unemployment Rates

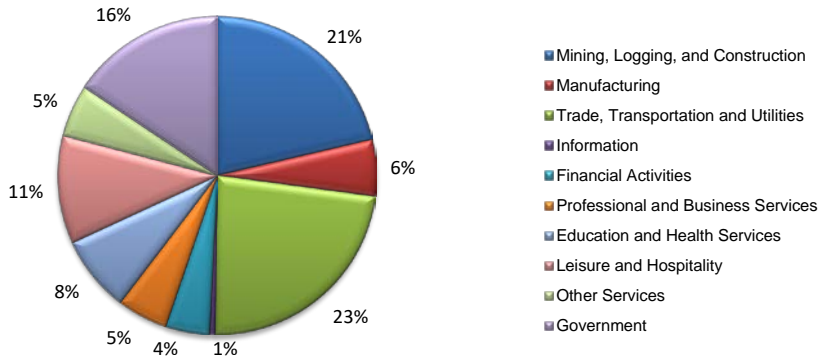


ODESSA CES

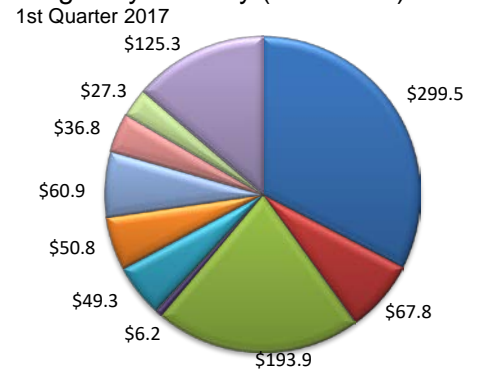
Area Title	NAICS Industry	Jun-17	May-17	Jun-17	Monthly Change	Monthly %	Yearly Change	Yearly %
Odessa	Total Nonfarm	69,200	69,600	68,500	-400	-0.6%	700	1.0%
Odessa	Total Private	58,400	58,600	58,000	-200	-0.3%	400	0.7%
Odessa	Goods Producing	18,500	18,300	18,200	200	1.1%	300	1.6%
Odessa	.Mining, Logging, and Construction	14,500	14,300	14,200	200	1.4%	300	2.1%
Odessa	.Manufacturing	4,000	4,000	4,000	0	0.0%	0	0.0%
Odessa	Service Providing	50,700	51,300	50,300	-600	-1.2%	400	0.8%
Odessa	.Private Service Providing	39,900	40,300	39,800	-400	-1.0%	100	0.3%
Odessa	..Trade, Transportation, and Utilities	16,000	16,000	15,800	0	0.0%	200	1.3%
Odessa	...Wholesale Trade	5,200	5,200	5,100	0	0.0%	100	2.0%
Odessa	...Retail Trade	8,000	8,000	8,100	0	0.0%	-100	-1.2%
Odessa	...Transportation, Warehousing, and Utilities	2,800	2,800	2,600	0	0.0%	200	7.7%
Odessa	..Information	400	400	400	0	0.0%	0	0.0%
Odessa	..Financial Activities	3,100	3,100	3,200	0	0.0%	-100	-3.1%
Odessa	..Professional and Business Services	3,600	3,800	3,700	-200	-5.3%	-100	-2.7%
Odessa	..Educational and Health Services	5,500	5,500	5,300	0	0.0%	200	3.8%
Odessa	..Leisure and Hospitality	7,700	7,900	7,800	-200	-2.5%	-100	-1.3%
Odessa	..Other Services	3,600	3,600	3,600	0	0.0%	0	0.0%
Odessa	Government	10,800	11,000	10,500	-200	-1.8%	300	2.9%
Odessa	.Federal Government	200	200	200	0	0.0%	0	0.0%
Odessa	.State Government	1,500	1,500	1,600	0	0.0%	-100	-6.3%
Odessa	.Local Government	9,100	9,300	8,700	-200	-2.2%	400	4.6%

(Ector)

Industry Composition



Wages by Industry (in millions)



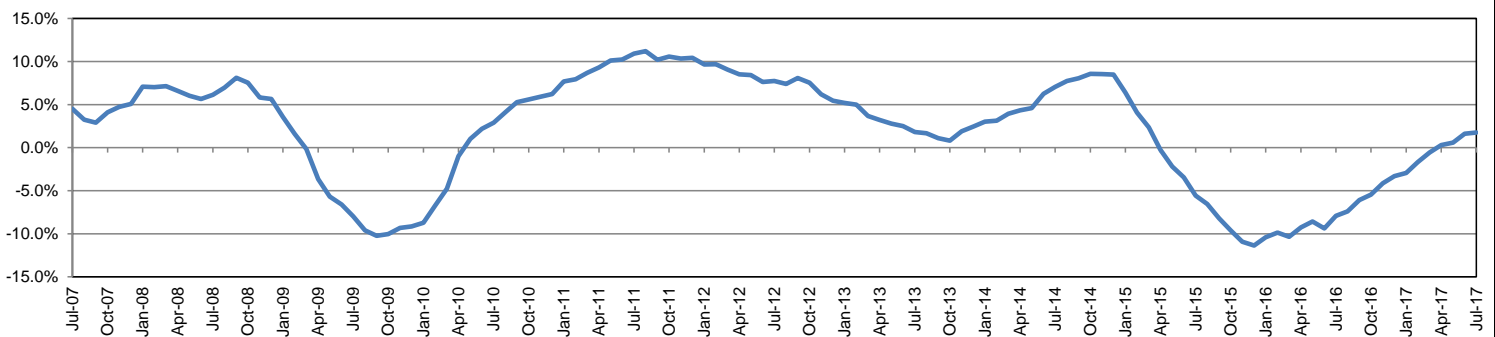
Employment by Industry

	Jul-17	Jun-17	Jul-16	Monthly Change		Annual Change	
				Actual	%	Actual	%
Total Nonfarm	69,700	69,600	68,500	100	0.1%	1,200	1.8%
Mining, Logging, and Construction	14,900	14,500	14,600	400	2.8%	300	2.1%
Manufacturing	4,000	4,000	4,100	0	0.0%	-100	-2.4%
Trade, Transportation, and Utilities	16,100	16,100	15,800	0	0.0%	300	1.9%
Information	400	400	400	0	0.0%	0	0.0%
Financial Activities	3,100	3,100	3,100	0	0.0%	0	0.0%
Professional and Business Services	3,600	3,700	3,600	-100	-2.7%	0	0.0%
Education and Health Services	5,400	5,500	5,300	-100	-1.8%	100	1.9%
Leisure and Hospitality	7,600	7,800	7,600	-200	-2.6%	0	0.0%
Other Services	3,700	3,700	3,600	0	0.0%	100	2.8%
Government	10,900	10,800	10,400	100	0.9%	500	4.8%

Industry Size Class

Size Class	Employees per firm	Number of Firms	January 2017	
			Employment in Size Class	% Total Employment
9	1000+	5	10,795	15.8%
8	500-999	7	5,394	7.9%
7	250-499	15	5,031	7.4%
6	100-249	73	10,452	15.3%
5	50-99	144	9,658	14.1%
4	20-49	434	13,118	19.2%
3	10-19	497	6,767	9.9%
2	5-9	656	4,400	6.4%
1	1-4	1,219	2,688	3.9%
0	0	349	0	0.0%
Total		3,399	68,303	100.0%

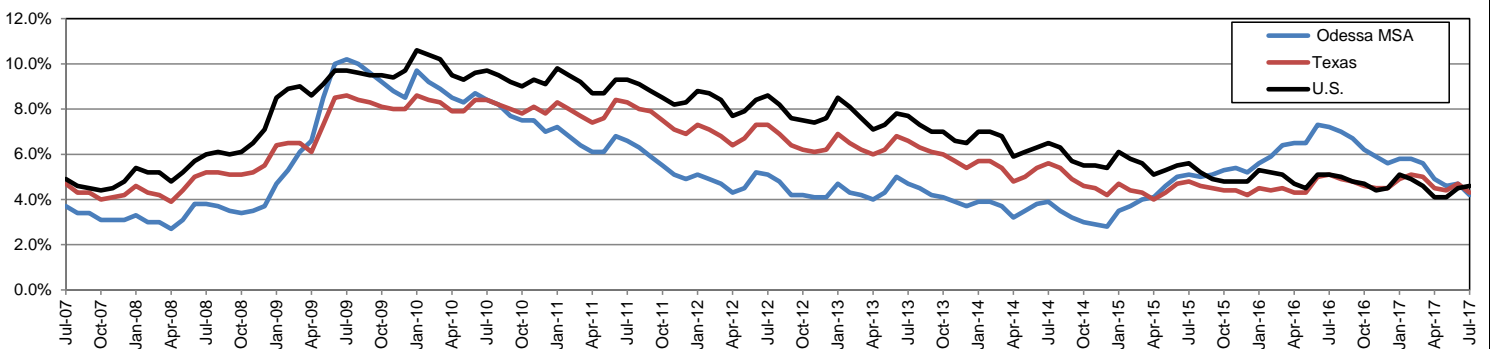
Annual Growth Rate for Total Nonagricultural Employment



Unemployment Information (all estimates in thousands)

	Odessa MSA				Texas (Actual)				United States (Actual)			
	C.L.F.	Emp.	Unemp.	Rate	C.L.F.	Emp.	Unemp.	Rate	C.L.F.	Emp.	Unemp.	Rate
Jul-17	74.2	71.0	3.1	4.2	13,433.4	12,849.5	584.0	4.3	161,911.0	154,470.0	7,441.0	4.6
Jun-17	73.9	70.4	3.4	4.7	13,462.3	12,831.1	631.1	4.7	161,337.0	154,086.0	7,250.0	4.5
Jul-16	75.8	70.3	5.5	7.2	13,356.8	12,681.9	675.0	5.1	160,705.0	152,437.0	8,267.0	5.1

Historical Unemployment Rates

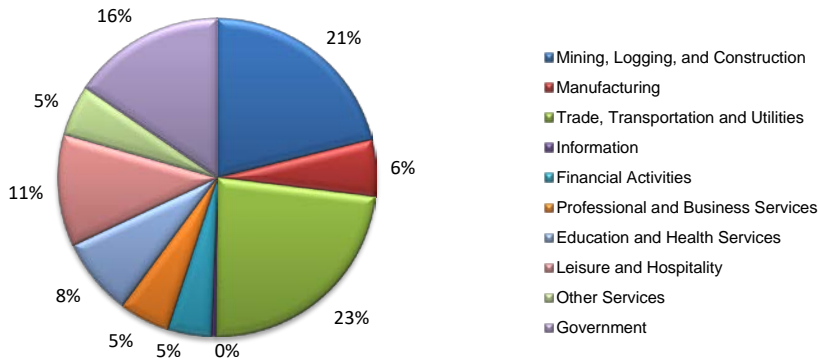


ODESSA CES

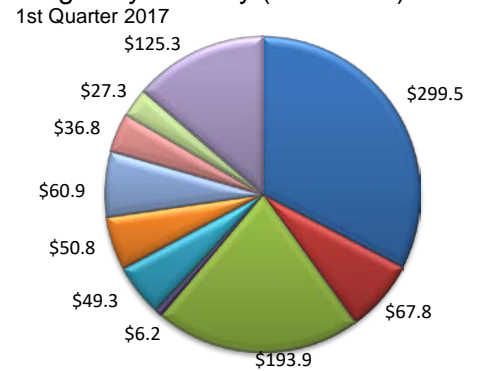
Area Title	NAICS Industry	Jul-17	Jun-17	Jul-17	Monthly Change	Monthly %	Yearly Change	Yearly %
Odessa	Total Nonfarm	69,700	69,600	68,500	100	0.1%	1,200	1.8%
Odessa	Total Private	58,800	58,800	58,100	0	0.0%	700	1.2%
Odessa	Goods Producing	18,900	18,500	18,700	400	2.2%	200	1.1%
Odessa	.Mining, Logging, and Construction	14,900	14,500	14,600	400	2.8%	300	2.1%
Odessa	.Manufacturing	4,000	4,000	4,100	0	0.0%	-100	-2.4%
Odessa	Service Providing	50,800	51,100	49,800	-300	-0.6%	1,000	2.0%
Odessa	.Private Service Providing	39,900	40,300	39,400	-400	-1.0%	500	1.3%
Odessa	..Trade, Transportation, and Utilities	16,100	16,100	15,800	0	0.0%	300	1.9%
Odessa	...Wholesale Trade	5,200	5,200	5,100	0	0.0%	100	2.0%
Odessa	...Retail Trade	8,100	8,100	8,000	0	0.0%	100	1.3%
Odessa	...Transportation, Warehousing, and Utilities	2,800	2,800	2,700	0	0.0%	100	3.7%
Odessa	..Information	400	400	400	0	0.0%	0	0.0%
Odessa	..Financial Activities	3,100	3,100	3,100	0	0.0%	0	0.0%
Odessa	..Professional and Business Services	3,600	3,700	3,600	-100	-2.7%	0	0.0%
Odessa	..Educational and Health Services	5,400	5,500	5,300	-100	-1.8%	100	1.9%
Odessa	..Leisure and Hospitality	7,600	7,800	7,600	-200	-2.6%	0	0.0%
Odessa	..Other Services	3,700	3,700	3,600	0	0.0%	100	2.8%
Odessa	Government	10,900	10,800	10,400	100	0.9%	500	4.8%
Odessa	.Federal Government	200	200	200	0	0.0%	0	0.0%
Odessa	.State Government	1,600	1,500	1,600	100	6.7%	0	0.0%
Odessa	.Local Government	9,100	9,100	8,600	0	0.0%	500	5.8%

(Ector)

Industry Composition



Wages by Industry (in millions)



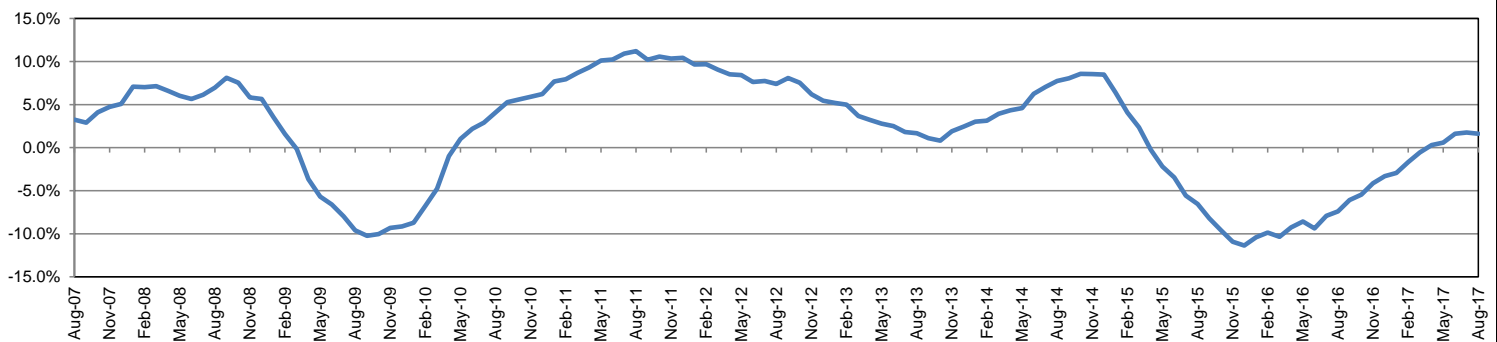
Employment by Industry

				Monthly Change		Annual Change	
	Aug-17	Jul-17	Aug-16	Actual	%	Actual	%
Total Nonfarm	69,800	69,700	68,700	100	0.1%	1,100	1.6%
Mining, Logging, and Construction	14,800	14,800	14,600	0	0.0%	200	1.4%
Manufacturing	4,000	4,000	4,100	0	0.0%	-100	-2.4%
Trade, Transportation, and Utilities	16,200	16,100	15,900	100	0.6%	300	1.9%
Information	300	400	400	-100	-25.0%	-100	-25.0%
Financial Activities	3,100	3,100	3,100	0	0.0%	0	0.0%
Professional and Business Services	3,600	3,600	3,600	0	0.0%	0	0.0%
Education and Health Services	5,500	5,400	5,400	100	1.9%	100	1.9%
Leisure and Hospitality	7,900	7,700	7,700	200	2.6%	200	2.6%
Other Services	3,600	3,700	3,600	-100	-2.7%	0	0.0%
Government	10,800	10,900	10,300	-100	-0.9%	500	4.9%

Industry Size Class

January 2017				
Size Class	Employees per firm	Number of Firms	Employment in Size Class	% Total Employment
9	1000+	5	10,795	15.8%
8	500-999	7	5,394	7.9%
7	250-499	15	5,031	7.4%
6	100-249	73	10,452	15.3%
5	50-99	144	9,658	14.1%
4	20-49	434	13,118	19.2%
3	10-19	497	6,767	9.9%
2	5-9	656	4,400	6.4%
1	1-4	1,219	2,688	3.9%
0	0	349	0	0.0%
Total		3,399	68,303	100.0%

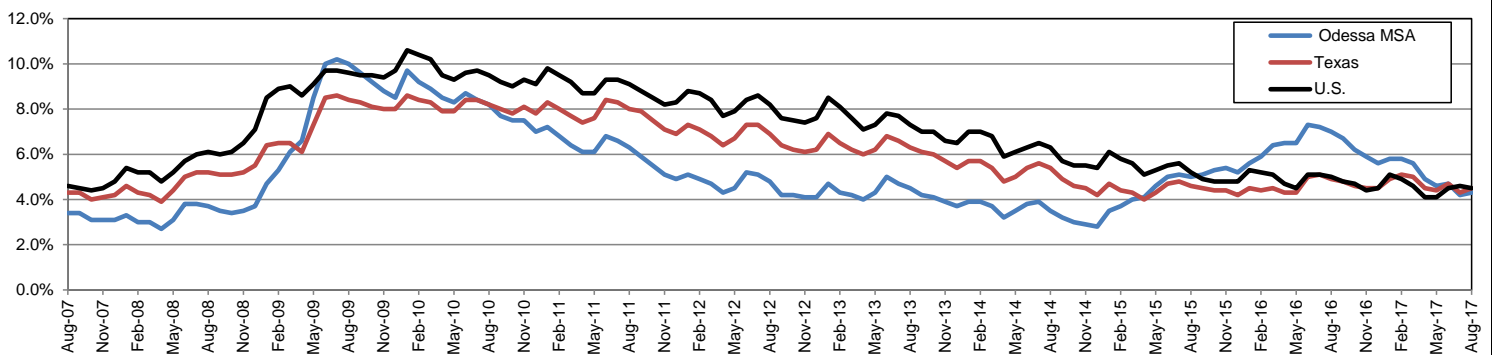
Annual Growth Rate for Total Nonagricultural Employment



Unemployment Information (all estimates in thousands)

	Odessa MSA				Texas (Actual)				United States (Actual)			
	C.L.F.	Emp.	Unemp.	Rate	C.L.F.	Emp.	Unemp.	Rate	C.L.F.	Emp.	Unemp.	Rate
Aug-17	74.0	70.8	3.2	4.3	13,406.8	12,802.0	604.8	4.5	160,863.0	153,576.0	7,287.0	4.5
Jul-17	74.2	71.1	3.1	4.2	13,434.6	12,850.6	584.0	4.3	161,911.0	154,470.0	7,441.0	4.6
Aug-16	75.4	70.1	5.3	7.0	13,295.2	12,639.0	656.2	4.9	159,800.0	151,804.0	7,996.0	5.0

Historical Unemployment Rates

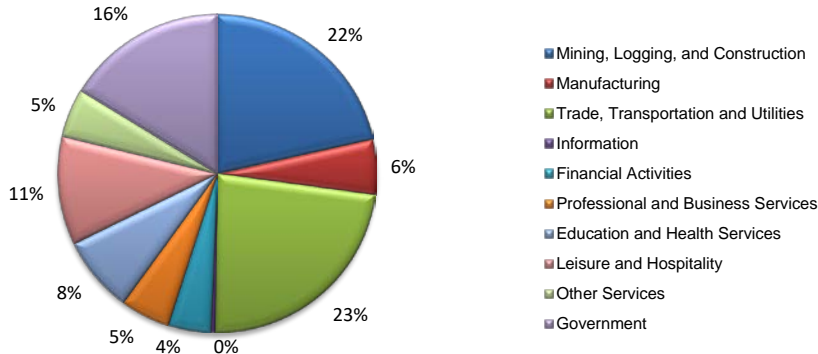


ODESSA CES

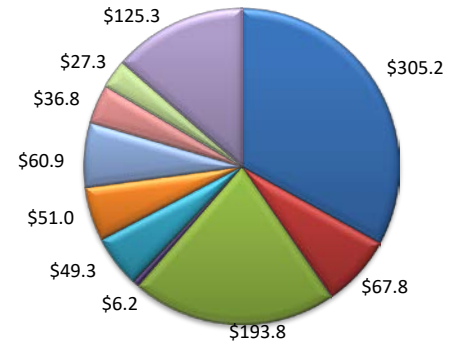
Area Title	NAICS Industry	Aug-17	Jul-17	Aug-17	Monthly Change	Monthly %	Yearly Change	Yearly %
Odessa	Total Nonfarm	69,800	69,700	68,700	100	0.1%	1,100	1.6%
Odessa	Total Private	59,000	58,800	58,400	200	0.3%	600	1.0%
Odessa	Goods Producing	18,800	18,800	18,700	0	0.0%	100	0.5%
Odessa	.Mining, Logging, and Construction	14,800	14,800	14,600	0	0.0%	200	1.4%
Odessa	.Manufacturing	4,000	4,000	4,100	0	0.0%	-100	-2.4%
Odessa	Service Providing	51,000	50,900	50,000	100	0.2%	1,000	2.0%
Odessa	.Private Service Providing	40,200	40,000	39,700	200	0.5%	500	1.3%
Odessa	..Trade, Transportation, and Utilities	16,200	16,100	15,900	100	0.6%	300	1.9%
Odessa	...Wholesale Trade	5,200	5,200	5,100	0	0.0%	100	2.0%
Odessa	...Retail Trade	8,200	8,100	8,100	100	1.2%	100	1.2%
Odessa	...Transportation, Warehousing, and Utilities	2,800	2,800	2,700	0	0.0%	100	3.7%
Odessa	..Information	300	400	400	-100	-25.0%	-100	-25.0%
Odessa	..Financial Activities	3,100	3,100	3,100	0	0.0%	0	0.0%
Odessa	..Professional and Business Services	3,600	3,600	3,600	0	0.0%	0	0.0%
Odessa	..Educational and Health Services	5,500	5,400	5,400	100	1.9%	100	1.9%
Odessa	..Leisure and Hospitality	7,900	7,700	7,700	200	2.6%	200	2.6%
Odessa	..Other Services	3,600	3,700	3,600	-100	-2.7%	0	0.0%
Odessa	Government	10,800	10,900	10,300	-100	-0.9%	500	4.9%
Odessa	.Federal Government	200	200	200	0	0.0%	0	0.0%
Odessa	.State Government	1,600	1,600	1,600	0	0.0%	0	0.0%
Odessa	.Local Government	9,000	9,100	8,500	-100	-1.1%	500	5.9%

(Ector)

Industry Composition



Wages by Industry (in millions)
2nd Quarter 2017



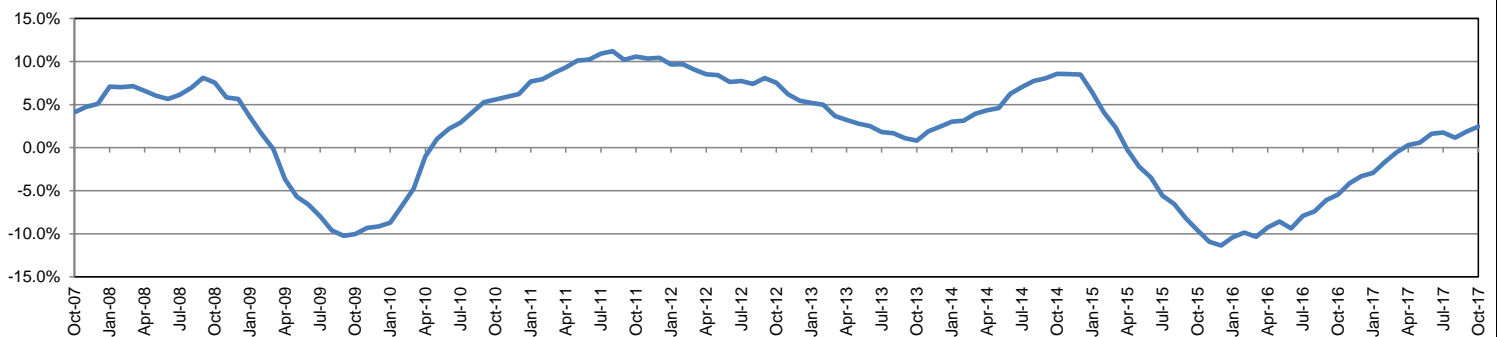
Employment by Industry

	Oct-17	Sep-17	Oct-16	Monthly Change		Annual Change	
				Actual	%	Actual	%
Total Nonfarm	71,100	70,600	69,400	500	0.7%	1,700	2.4%
Mining, Logging, and Construction	15,300	15,000	14,500	300	2.0%	800	5.5%
Manufacturing	4,000	4,000	4,000	0	0.0%	0	0.0%
Trade, Transportation, and Utilities	16,400	16,300	16,000	100	0.6%	400	2.5%
Information	300	300	400	0	0.0%	-100	-25.0%
Financial Activities	3,100	3,100	3,100	0	0.0%	0	0.0%
Professional and Business Services	3,600	3,400	3,600	200	5.9%	0	0.0%
Education and Health Services	5,500	5,500	5,600	0	0.0%	-100	-1.8%
Leisure and Hospitality	7,800	7,800	7,600	0	0.0%	200	2.6%
Other Services	3,500	3,500	3,500	0	0.0%	0	0.0%
Government	11,600	11,700	11,100	-100	-0.9%	500	4.5%

Industry Size Class

Size Class	Employees per firm	Number of Firms	June 2017	
			Employment in Size Class	% Total Employment
9	1000+	5	10,785	15.3%
8	500-999	5	4,131	5.9%
7	250-499	21	7,402	10.5%
6	100-249	77	10,952	15.5%
5	50-99	145	9,691	13.7%
4	20-49	448	13,596	19.3%
3	10-19	518	6,969	9.9%
2	5-9	636	4,272	6.1%
1	1-4	1,210	2,696	3.8%
0	0	325	0	0.0%
Total		3,390	70,494	100.0%

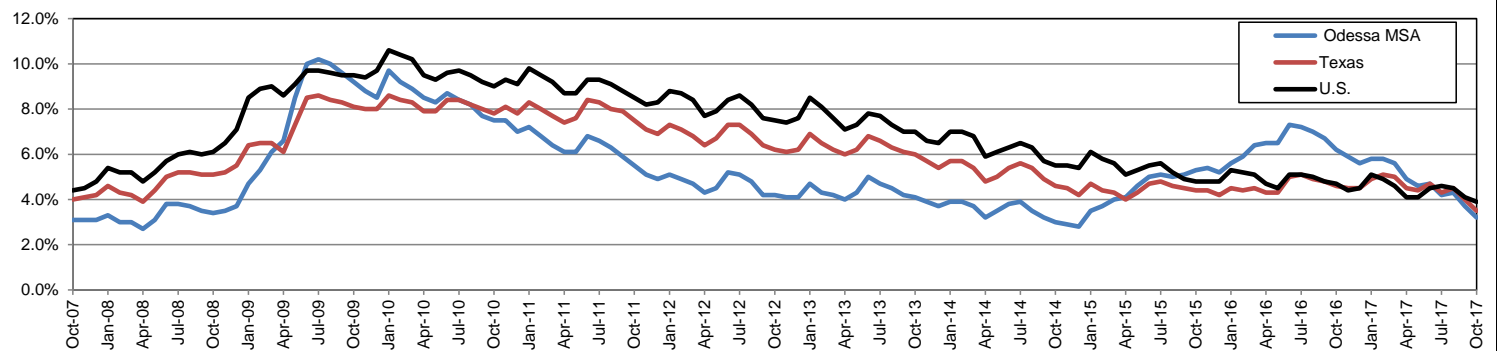
Annual Growth Rate for Total Nonagricultural Employment



Unemployment Information (all estimates in thousands)

	Odessa MSA				Texas (Actual)				United States (Actual)			
	C.L.F.	Emp.	Unemp.	Rate	C.L.F.	Emp.	Unemp.	Rate	C.L.F.	Emp.	Unemp.	Rate
Oct-17	74.3	71.9	2.4	3.2	13,392.3	12,922.1	470.2	3.5	160,465.0	154,223.0	6,242.0	3.9
Sep-17	75.0	72.2	2.8	3.7	13,498.7	12,954.8	543.9	4.0	161,049.0	154,494.0	6,556.0	4.1
Oct-16	75.3	70.6	4.7	6.2	13,338.7	12,725.9	612.9	4.6	159,783.0	152,335.0	7,447.0	4.7

Historical Unemployment Rates



ODESSA CES

Area Title	NAICS Industry	Oct-17	Sep-17	Oct-17	Monthly Change	Monthly %	Yearly Change	Yearly %
Odessa	Total Nonfarm	71,100	70,600	69,400	500	0.7%	1,700	2.4%
Odessa	Total Private	59,500	58,900	58,300	600	1.0%	1,200	2.1%
Odessa	Goods Producing	19,300	19,000	18,500	300	1.6%	800	4.3%
Odessa	.Mining, Logging, and Construction	15,300	15,000	14,500	300	2.0%	800	5.5%
Odessa	.Manufacturing	4,000	4,000	4,000	0	0.0%	0	0.0%
Odessa	Service Providing	51,800	51,600	50,900	200	0.4%	900	1.8%
Odessa	.Private Service Providing	40,200	39,900	39,800	300	0.8%	400	1.0%
Odessa	..Trade, Transportation, and Utilities	16,400	16,300	16,000	100	0.6%	400	2.5%
Odessa	...Wholesale Trade	5,200	5,200	5,200	0	0.0%	0	0.0%
Odessa	...Retail Trade	8,300	8,200	8,000	100	1.2%	300	3.8%
Odessa	...Transportation, Warehousing, and Utilities	2,900	2,900	2,800	0	0.0%	100	3.6%
Odessa	..Information	300	300	400	0	0.0%	-100	-25.0%
Odessa	..Financial Activities	3,100	3,100	3,100	0	0.0%	0	0.0%
Odessa	..Professional and Business Services	3,600	3,400	3,600	200	5.9%	0	0.0%
Odessa	..Educational and Health Services	5,500	5,500	5,600	0	0.0%	-100	-1.8%
Odessa	..Leisure and Hospitality	7,800	7,800	7,600	0	0.0%	200	2.6%
Odessa	..Other Services	3,500	3,500	3,500	0	0.0%	0	0.0%
Odessa	Government	11,600	11,700	11,100	-100	-0.9%	500	4.5%
Odessa	.Federal Government	200	200	200	0	0.0%	0	0.0%
Odessa	.State Government	1,800	1,800	1,800	0	0.0%	0	0.0%
Odessa	.Local Government	9,600	9,700	9,100	-100	-1.0%	500	5.5%

ODESSA CES

Area Title	NAICS Industry	Dec-17	Nov-17	Dec-16	Monthly Change	Monthly %	Yearly Change	Yearly %
Odessa	Total Nonfarm	71,200	70,900	70,100	300	0.4%	1,100	1.6%
Odessa	Total Private	59,500	59,400	58,900	100	0.2%	600	1.0%
Odessa	Goods Producing	19,600	19,400	18,700	200	1.0%	900	4.8%
Odessa	.Mining, Logging, and Construction	15,600	15,400	14,500	200	1.3%	1,100	7.6%
Odessa	.Manufacturing	4,000	4,000	4,200	0	0.0%	-200	-4.8%
Odessa	Service Providing	51,600	51,500	51,400	100	0.2%	200	0.4%
Odessa	.Private Service Providing	39,900	40,000	40,200	-100	-0.3%	-300	-0.7%
Odessa	..Trade, Transportation, and Utilities	16,400	16,500	16,400	-100	-0.6%	0	0.0%
Odessa	...Wholesale Trade	5,200	5,200	5,200	0	0.0%	0	0.0%
Odessa	...Retail Trade	8,300	8,400	8,300	-100	-1.2%	0	0.0%
Odessa	...Transportation, Warehousing, and Utilities	2,900	2,900	2,900	0	0.0%	0	0.0%
Odessa	..Information	300	300	400	0	0.0%	-100	-25.0%
Odessa	..Financial Activities	3,100	3,100	3,100	0	0.0%	0	0.0%
Odessa	..Professional and Business Services	3,500	3,500	3,600	0	0.0%	-100	-2.8%
Odessa	..Educational and Health Services	5,500	5,500	5,600	0	0.0%	-100	-1.8%
Odessa	..Leisure and Hospitality	7,700	7,700	7,700	0	0.0%	0	0.0%
Odessa	..Other Services	3,400	3,400	3,400	0	0.0%	0	0.0%
Odessa	Government	11,700	11,500	11,200	200	1.7%	500	4.5%
Odessa	.Federal Government	200	200	200	0	0.0%	0	0.0%
Odessa	.State Government	1,700	1,700	1,700	0	0.0%	0	0.0%
Odessa	.Local Government	9,800	9,600	9,300	200	2.1%	500	5.4%