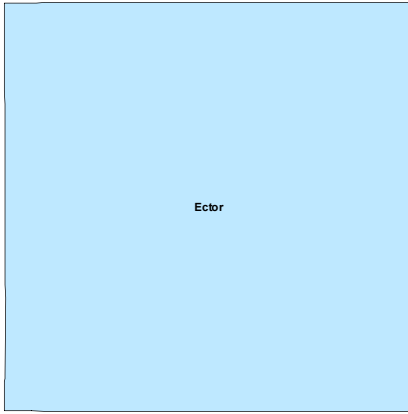
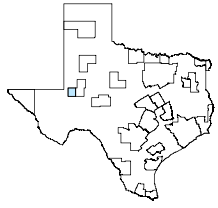


Odessa MSA

January 2020



MSA Labor Force Statistics

	Jan-20	Dec-19	Jan-19	Yearly Change
Civilian Labor Force	88,007	88,129	88,135	-128
Employed	85,015	85,565	85,741	-726
Unemployed	2,992	2,564	2,394	598
Unemployment Rate	3.4%	2.9%	2.7%	0.7%

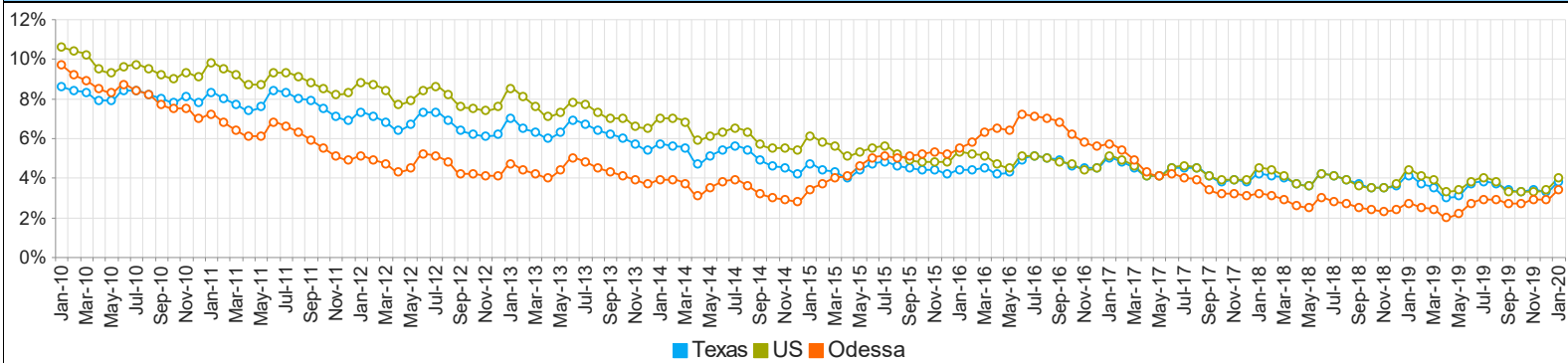
Texas Labor Force Statistics

	Jan-20	Dec-19	Jan-19	Yearly Change
Civilian Labor Force	14,187,439	14,192,255	13,938,076	249,363
Employed	13,654,962	13,722,119	13,365,741	289,221
Unemployed	532,477	470,136	572,335	-39,858
Unemployment Rate	3.8%	3.3%	4.1%	-0.3%

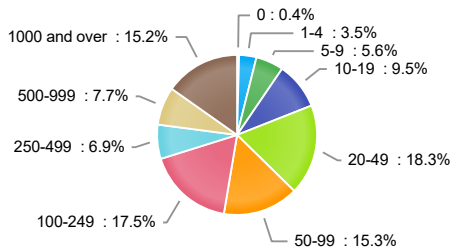
US Labor Force Statistics

	Jan-20	Dec-19	Jan-19	Yearly Change
Civilian Labor Force	163,497,000	164,007,000	162,104,000	1,393,000
Employed	156,994,000	158,504,000	154,964,000	2,030,000
Unemployed	6,504,000	5,503,000	7,140,000	-636,000
Unemployment Rate	4.0%	3.4%	4.4%	-0.4%

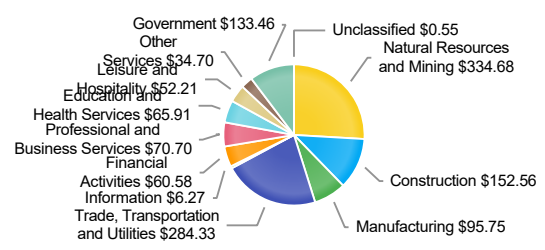
Historical Unemployment Rates



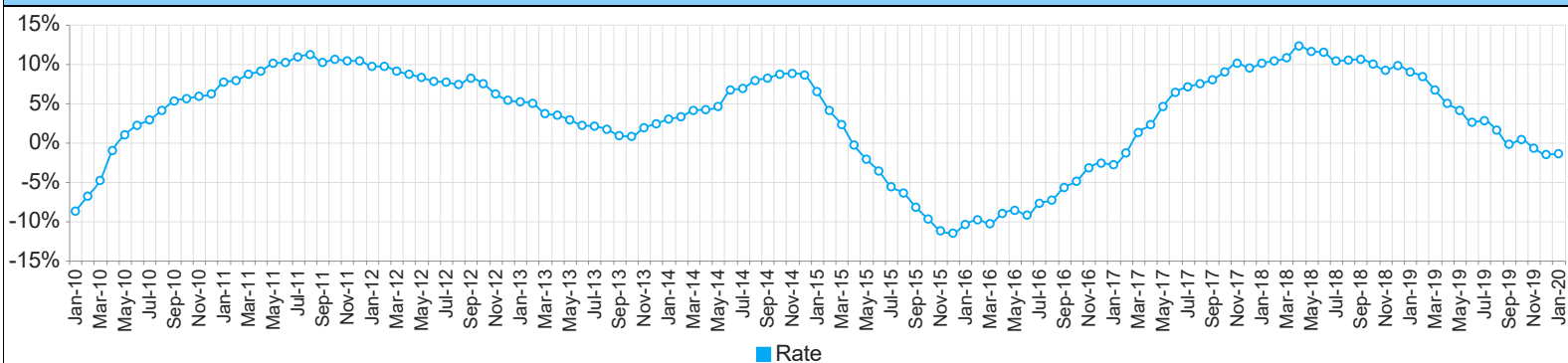
Employment by Size Class (3rd Quarter 2019)



Wages by Industry (in millions) (3rd Quarter 2019)



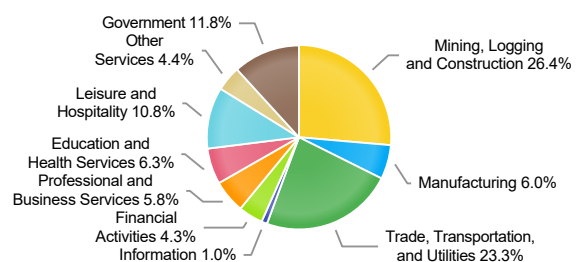
Annual Growth Rate Total Non-agricultural employment



Employment by Industry (January 2020)

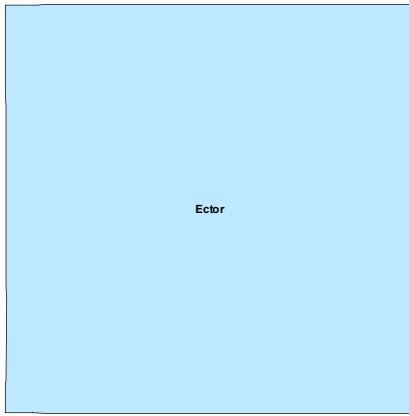
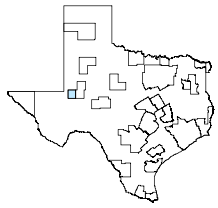
Industry	Current Month Employment	% Monthly Change	% Yearly Change
Total Nonfarm	82,300	-1.6%	-1.4%
Mining, Logging and Construction	21,700	-0.5%	-5.2%
Manufacturing	4,900	-2.0%	-5.8%
Trade, Transportation, and Utilities	19,200	-2.5%	1.1%
Information	800	0.0%	14.3%
Financial Activities	3,500	0.0%	0.0%
Professional and Business Services	4,800	0.0%	2.1%
Education and Health Services	5,200	0.0%	0.0%
Leisure and Hospitality	8,900	-2.2%	3.5%
Other Services	3,600	0.0%	-2.7%
Government	9,700	-4.0%	-3.0%

Employment by Industry (January 2020)



## Odessa MSA

February 2020



### MSA Labor Force Statistics

	Feb-20	Jan-20	Feb-19	Yearly Change
Civilian Labor Force	87,979	87,996	88,895	-916
Employed	85,051	85,003	86,659	-1,608
Unemployed	2,928	2,993	2,236	692
Unemployment Rate	3.3%	3.4%	2.5%	0.8%

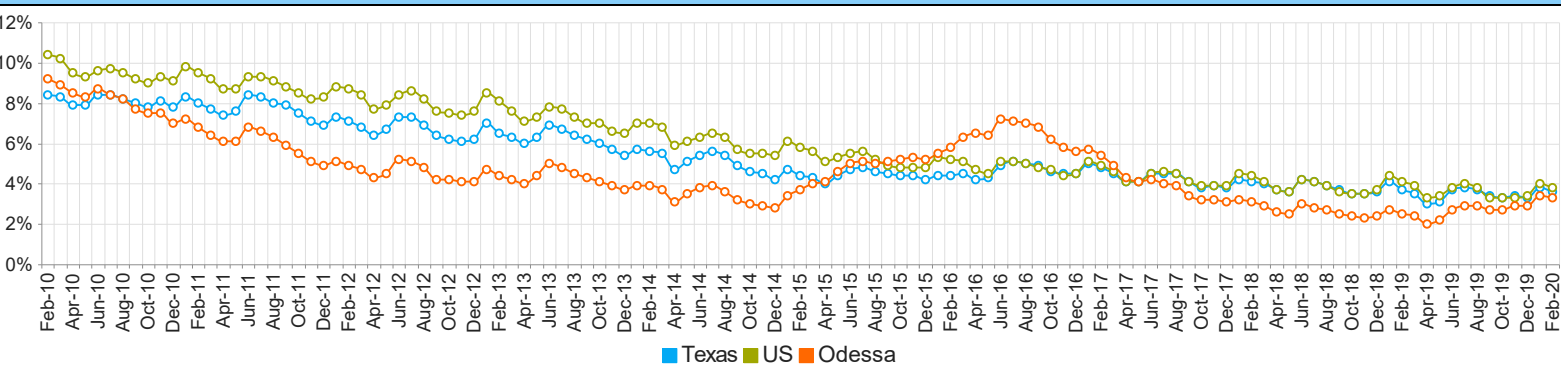
### Texas Labor Force Statistics

	Feb-20	Jan-20	Feb-19	Yearly Change
Civilian Labor Force	14,286,245	14,188,058	14,001,465	284,780
Employed	13,777,994	13,655,624	13,486,223	291,771
Unemployed	508,251	532,434	515,242	-6,991
Unemployment Rate	3.6%	3.8%	3.7%	-0.1%

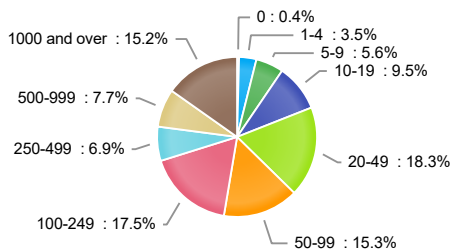
### US Labor Force Statistics

	Feb-20	Jan-20	Feb-19	Yearly Change
Civilian Labor Force	164,235,000	163,497,000	162,793,000	1,442,000
Employed	158,017,000	156,994,000	156,167,000	1,850,000
Unemployed	6,218,000	6,504,000	6,625,000	-407,000
Unemployment Rate	3.8%	4.0%	4.1%	-0.3%

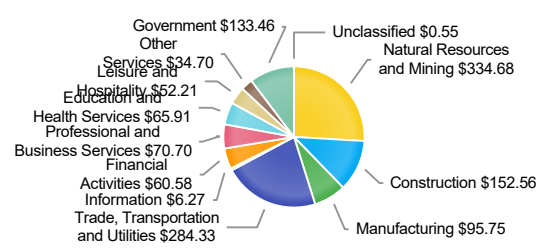
### Historical Unemployment Rates



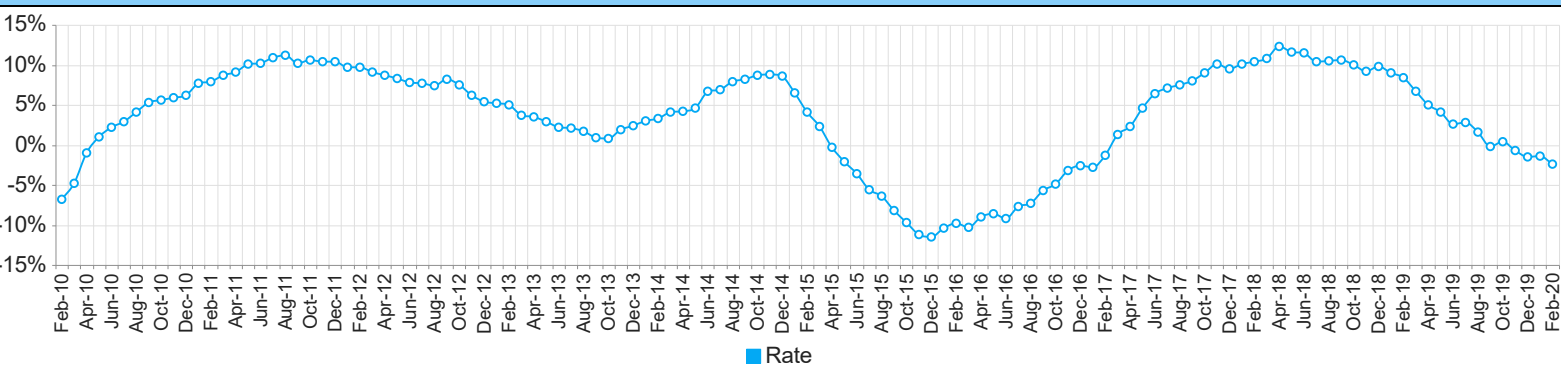
### Employment by Size Class (3rd Quarter 2019)



### Wages by Industry (in millions) (3rd Quarter 2019)



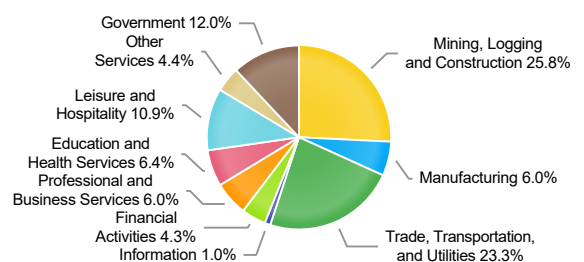
### Annual Growth Rate Total Non-agricultural employment



### Employment by Industry (February 2020)

Industry	Current Month Employment	% Monthly Change	% Yearly Change
Total Nonfarm	82,300	0.0%	-2.4%
Mining, Logging and Construction	21,200	-2.3%	-7.4%
Manufacturing	4,900	0.0%	-7.5%
Trade, Transportation, and Utilities	19,200	0.0%	0.0%
Information	800	0.0%	14.3%
Financial Activities	3,500	0.0%	0.0%
Professional and Business Services	4,900	2.1%	2.1%
Education and Health Services	5,300	1.9%	0.0%
Leisure and Hospitality	9,000	1.1%	3.4%
Other Services	3,600	0.0%	-2.7%
Government	9,900	2.1%	-2.9%

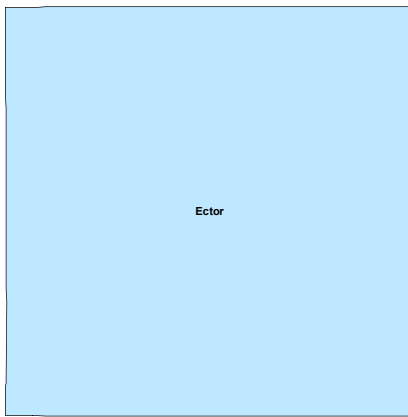
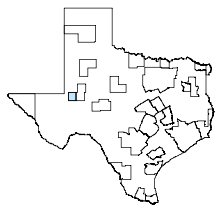
### Employment by Industry (February 2020)



Year	Period	Area	Series Code	Industry	Adjustment	Benchmark	No. of jobs	Production Workers	Weekly Earnings	Hourly Earnings	Hours Worked	Hierarchical Ordering
2020	January	Odessa	00000000	Total Nonfarm	Not Adjusted	2019	82,300	N/A	N/A	N/A	N/A	1
2020	January	Odessa	00000000	Total Nonfarm	Adjusted	2019	82,900	N/A	N/A	N/A	N/A	1
2020	January	Odessa	05000000	Total Private	Not Adjusted	2019	72,600	N/A	N/A	N/A	N/A	2
2020	January	Odessa	06000000	Goods Producing	Not Adjusted	2019	26,600	N/A	N/A	N/A	N/A	3
2020	January	Odessa	15000000	Mining, Logging and Construction	Not Adjusted	2019	21,700	N/A	N/A	N/A	N/A	4
2020	January	Odessa	30000000	Manufacturing	Not Adjusted	2019	4,900	N/A	N/A	N/A	N/A	19
2020	January	Odessa	07000000	Service-Providing	Not Adjusted	2019	55,700	N/A	N/A	N/A	N/A	50
2020	January	Odessa	08000000	Private Service Providing	Not Adjusted	2019	46,000	N/A	N/A	N/A	N/A	51
2020	January	Odessa	40000000	Trade, Transportation, and Utilities	Not Adjusted	2019	19,200	N/A	N/A	N/A	N/A	52
2020	January	Odessa	41000000	Wholesale Trade	Not Adjusted	2019	6,400	N/A	N/A	N/A	N/A	53
2020	January	Odessa	42000000	Retail Trade	Not Adjusted	2019	8,500	N/A	N/A	N/A	N/A	63
2020	January	Odessa	43000000	Transportation, Warehousing, and Utilities	Not Adjusted	2019	4,300	N/A	N/A	N/A	N/A	84
2020	January	Odessa	50000000	Information	Not Adjusted	2019	800	N/A	N/A	N/A	N/A	97
2020	January	Odessa	55000000	Financial Activities	Not Adjusted	2019	3,500	N/A	N/A	N/A	N/A	102
2020	January	Odessa	60000000	Professional and Business Services	Not Adjusted	2019	4,800	N/A	N/A	N/A	N/A	114
2020	January	Odessa	65000000	Education and Health Services	Not Adjusted	2019	5,200	N/A	N/A	N/A	N/A	129
2020	January	Odessa	70000000	Leisure and Hospitality	Not Adjusted	2019	8,900	N/A	N/A	N/A	N/A	140
2020	January	Odessa	80000000	Other Services	Not Adjusted	2019	3,600	N/A	N/A	N/A	N/A	146
2020	January	Odessa	90000000	Government	Not Adjusted	2019	9,700	N/A	N/A	N/A	N/A	150
2020	January	Odessa	90910000	Federal Government	Not Adjusted	2019	200	N/A	N/A	N/A	N/A	151
2020	January	Odessa	90920000	State Government	Not Adjusted	2019	1,800	N/A	N/A	N/A	N/A	154
2020	January	Odessa	90930000	Local Government	Not Adjusted	2019	7,700	N/A	N/A	N/A	N/A	157

## Odessa MSA

April 2020



### MSA Labor Force Statistics

	Apr-20	Mar-20	Apr-19	Yearly Change
Civilian Labor Force	79,055	86,622	88,227	-9,172
Employed	68,405	82,541	86,437	-18,032
Unemployed	10,650	4,081	1,790	8,860
Unemployment Rate	13.5%	4.7%	2.0%	11.5%

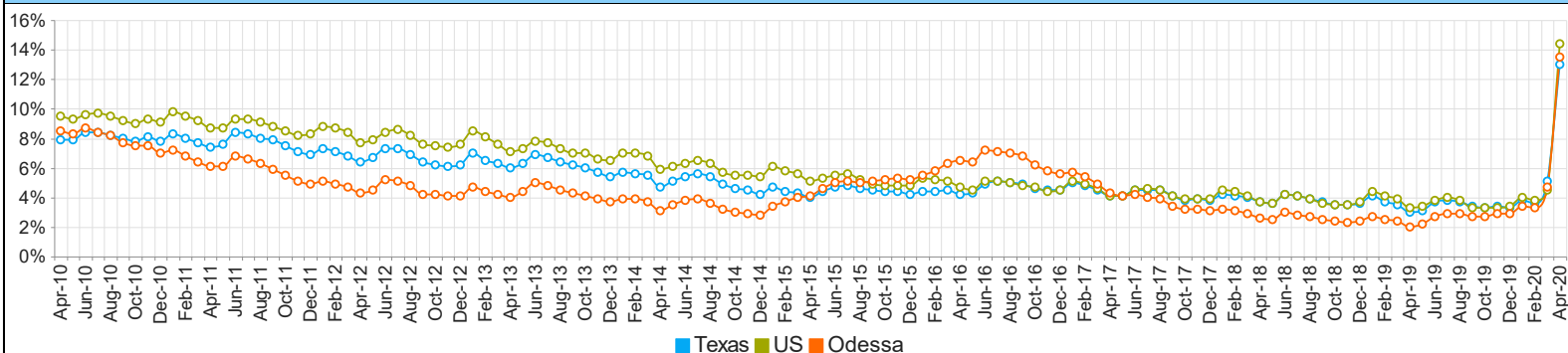
### Texas Labor Force Statistics

	Apr-20	Mar-20	Apr-19	Yearly Change
Civilian Labor Force	12,931,307	14,031,076	13,922,611	-991,304
Employed	11,244,059	13,312,340	13,504,971	-2,260,912
Unemployed	1,687,248	718,736	417,640	1,269,608
Unemployment Rate	13.0%	5.1%	3.0%	10.0%

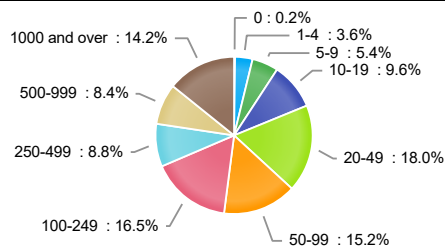
### US Labor Force Statistics

	Apr-20	Mar-20	Apr-19	Yearly Change
Civilian Labor Force	155,830,000	162,537,000	162,097,000	-6,267,000
Employed	133,326,000	155,167,000	156,710,000	-23,384,000
Unemployed	22,504,000	7,370,000	5,387,000	17,117,000
Unemployment Rate	14.4%	4.5%	3.3%	11.1%

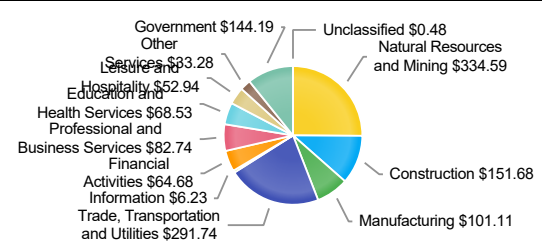
## Historical Unemployment Rates



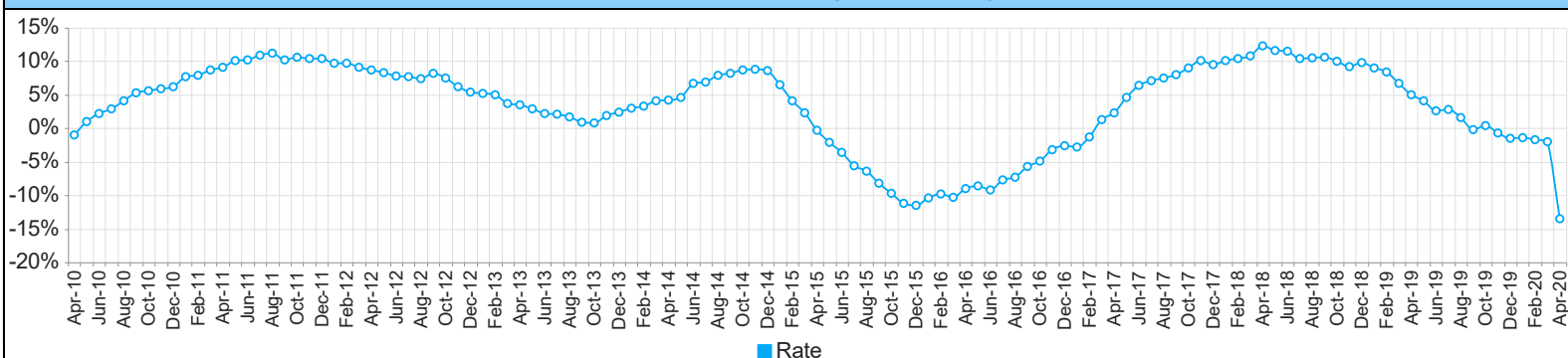
## Industry Size Class



## Wages by Industry (in millions) (4th Quarter 2019)



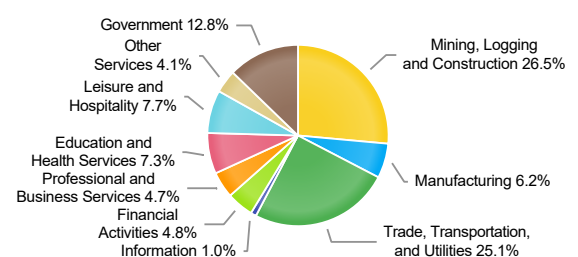
## Annual Growth Rate Total Non-agricultural employment

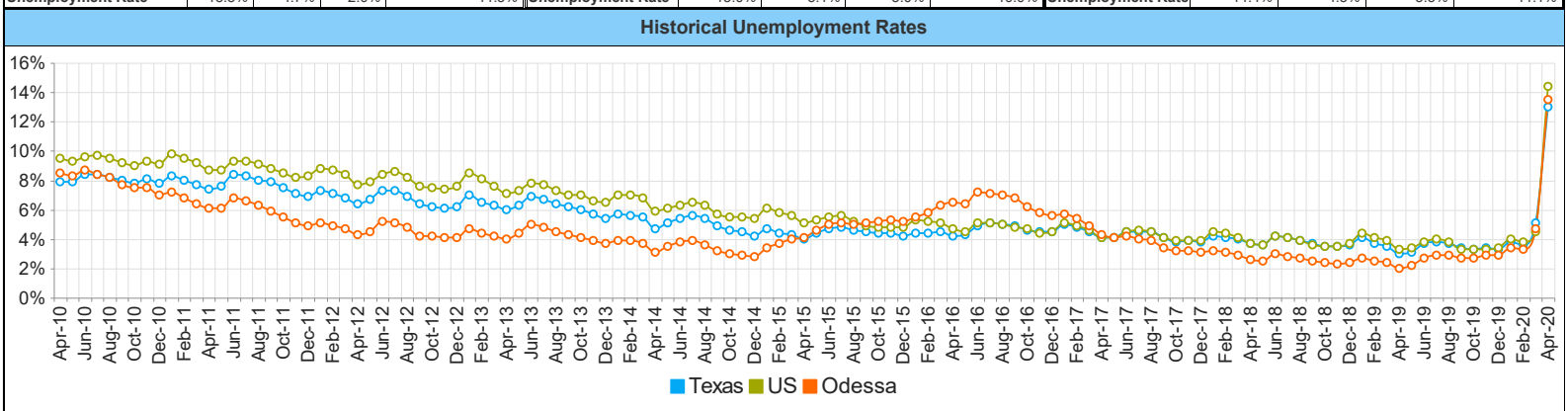
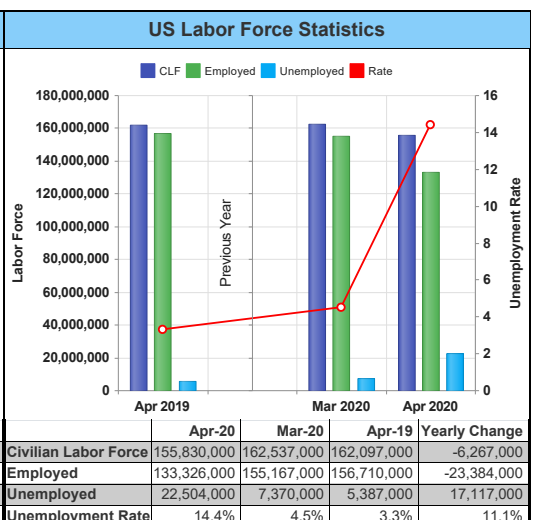
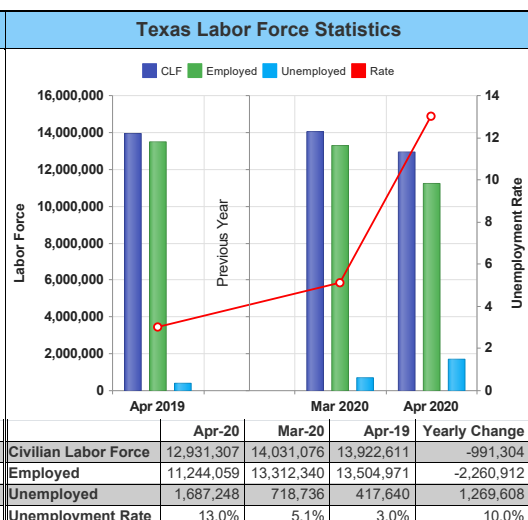
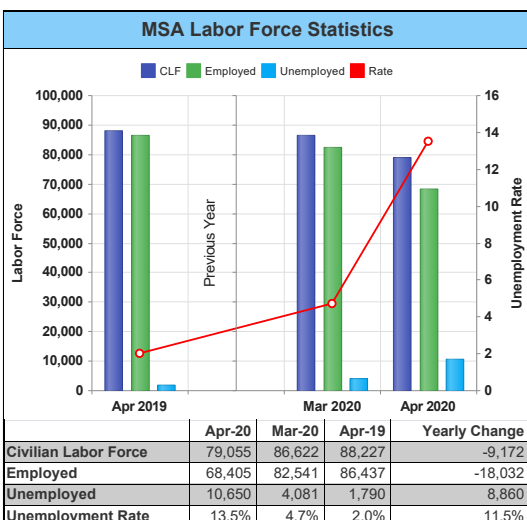


## Employment by Industry (April 2020)

Industry	Current Month Employment	% Monthly Change	% Yearly Change
Total Nonfarm	72,900	-11.6%	-13.5%
Mining, Logging and Construction	19,300	-8.5%	-15.0%
Manufacturing	4,500	-10.0%	-15.1%
Trade, Transportation, and Utilities	18,300	-4.2%	-3.7%
Information	700	-12.5%	0.0%
Financial Activities	3,500	0.0%	-2.8%
Professional and Business Services	3,400	-32.0%	-29.2%
Education and Health Services	5,300	-1.9%	1.9%
Leisure and Hospitality	5,600	-37.1%	-37.8%
Other Services	3,000	-16.7%	-18.9%
Government	9,300	-7.9%	-9.7%

## Employment by Industry (April 2020)

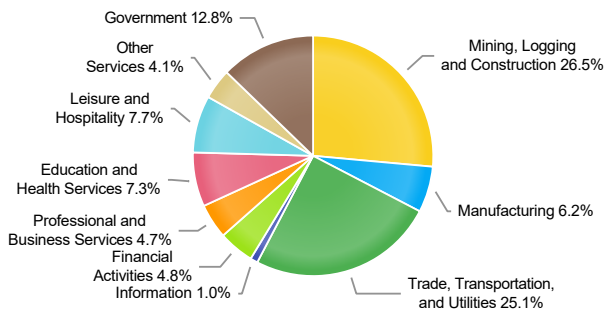




Months	MSA	Texas	US
Apr-20	13.5	13.0	14.4
Mar-20	4.7	5.1	4.5
Feb-20	3.3	3.6	3.8
Jan-20	3.4	3.8	4.0
Dec-19	2.9	3.3	3.4
Nov-19	2.9	3.4	3.3
Oct-19	2.7	3.3	3.3
Sep-19	2.7	3.4	3.3
Aug-19	2.9	3.7	3.8
Jul-19	2.9	3.8	4.0
Jun-19	2.7	3.7	3.8
May-19	2.2	3.1	3.4
Apr-19	2.0	3.0	3.3
Mar-19	2.4	3.5	3.9
Feb-19	2.5	3.7	4.1
Jan-19	2.7	4.1	4.4
Dec-18	2.4	3.6	3.7
Nov-18	2.3	3.5	3.5
Oct-18	2.4	3.5	3.5
Sep-18	2.5	3.7	3.6
Aug-18	2.7	3.9	3.9
Jul-18	2.8	4.1	4.1
Jun-18	3.0	4.2	4.2
May-18	2.5	3.6	3.6
Apr-18	2.6	3.7	3.7
Mar-18	2.9	4.0	4.1
Feb-18	3.1	4.1	4.4
Jan-18	3.2	4.2	4.5
Dec-17	3.1	3.8	3.9
Nov-17	3.2	3.9	3.9
Oct-17	3.2	3.8	3.9
Sep-17	3.4	4.1	4.1
Aug-17	3.9	4.5	4.5
Jul-17	4.0	4.5	4.6
Jun-17	4.2	4.5	4.5
May-17	4.1	4.1	4.1
Apr-17	4.3	4.1	4.1
Mar-17	4.9	4.5	4.6
Feb-17	5.4	4.8	4.9
Jan-17	5.7	5.0	5.1
Dec-16	5.6	4.5	4.5
Nov-16	5.8	4.5	4.4
Oct-16	6.2	4.6	4.7
Sep-16	6.8	4.9	4.8
Aug-16	7.0	5.0	5.0
Jul-16	7.1	5.1	5.1
Jun-16	7.2	4.9	5.1
May-16	6.4	4.3	4.5
Apr-16	6.5	4.2	4.7
Mar-16	6.3	4.5	5.1
Feb-16	5.8	4.4	5.2
Jan-16	5.5	4.4	5.3
Dec-15	5.2	4.2	4.8
Nov-15	5.3	4.4	4.8
Oct-15	5.2	4.4	4.8

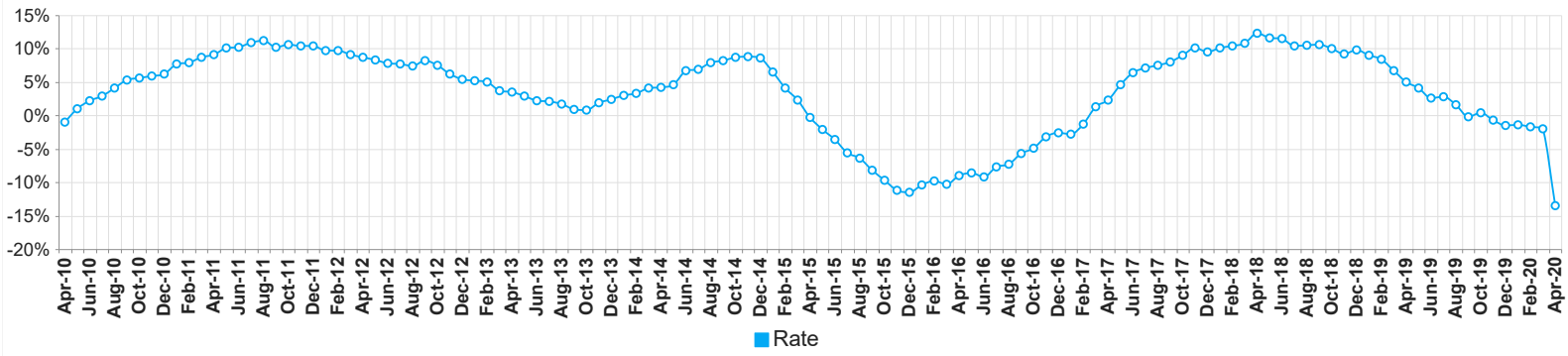
Months	MSA	Texas	US
Sep-15	5.1	4.5	4.9
Aug-15	5.0	4.6	5.2
Jul-15	5.1	4.8	5.6
Jun-15	5.0	4.7	5.5
May-15	4.6	4.4	5.3
Apr-15	4.1	4.0	5.1
Mar-15	4.0	4.3	5.6
Feb-15	3.7	4.4	5.8
Jan-15	3.4	4.7	6.1
Dec-14	2.8	4.2	5.4
Nov-14	2.9	4.5	5.5
Oct-14	3.0	4.6	5.5
Sep-14	3.2	4.9	5.7
Aug-14	3.6	5.4	6.3
Jul-14	3.9	5.6	6.5
Jun-14	3.8	5.4	6.3
May-14	3.5	5.1	6.1
Apr-14	3.1	4.7	5.9
Mar-14	3.7	5.5	6.8
Feb-14	3.9	5.6	7.0
Jan-14	3.9	5.7	7.0
Dec-13	3.7	5.4	6.5
Nov-13	3.9	5.7	6.6
Oct-13	4.1	6.0	7.0
Sep-13	4.3	6.2	7.0
Aug-13	4.5	6.4	7.3
Jul-13	4.8	6.7	7.7
Jun-13	5.0	6.9	7.8
May-13	4.4	6.3	7.3
Apr-13	4.0	6.0	7.1
Mar-13	4.2	6.3	7.6
Feb-13	4.4	6.5	8.1
Jan-13	4.7	7.0	8.5
Dec-12	4.1	6.2	7.6
Nov-12	4.1	6.1	7.4
Oct-12	4.2	6.2	7.5
Sep-12	4.2	6.4	7.6
Aug-12	4.8	6.9	8.2
Jul-12	5.1	7.3	8.6
Jun-12	5.2	7.3	8.4
May-12	4.5	6.7	7.9
Apr-12	4.3	6.4	7.7
Mar-12	4.7	6.8	8.4
Feb-12	4.9	7.1	8.7
Jan-12	5.1	7.3	8.8
Dec-11	4.9	6.9	8.3
Nov-11	5.1	7.1	8.2
Oct-11	5.5	7.5	8.5
Sep-11	5.9	7.9	8.8
Aug-11	6.3	8.0	9.1
Jul-11	6.6	8.3	9.3
Jun-11	6.8	8.4	9.3
May-11	6.1	7.6	8.7
Apr-11	6.1	7.4	8.7
Mar-11	6.4	7.7	9.2
Feb-11	6.8	8.0	9.5
Jan-11	7.2	8.3	9.8
Dec-10	7.0	7.8	9.1
Nov-10	7.5	8.1	9.3
Oct-10	7.5	7.8	9.0
Sep-10	7.7	8.0	9.2
Aug-10	8.2	8.2	9.5
Jul-10	8.4	8.4	9.7
Jun-10	8.7	8.4	9.6
May-10	8.3	7.9	9.3
Apr-10	8.5	7.9	9.5

## Employment by Industry



Industry	Apr-20	Mar-20	Apr-19	Monthly Change	Monthly Percent Change	Yearly Change	Yearly Percent Change
Total Nonfarm	72,900	82,500	84,300	-9600	-11.6%	-11400	-13.5%
Mining, Logging and Construction	19,300	21,100	22,700	-1800	-8.5%	-3400	-15.0%
Manufacturing	4,500	5,000	5,300	-500	-10.0%	-800	-15.1%
Trade, Transportation, and Utilities	18,300	19,100	19,000	-800	-4.2%	-700	-3.7%
Information	700	800	700	-100	-12.5%	0	0.0%
Financial Activities	3,500	3,500	3,600	0	0.0%	-100	-2.8%
Professional and Business Services	3,400	5,000	4,800	-1600	-32.0%	-1400	-29.2%
Education and Health Services	5,300	5,400	5,200	-100	-1.9%	100	1.9%
Leisure and Hospitality	5,600	8,900	9,000	-3300	-37.1%	-3400	-37.8%
Other Services	3,000	3,600	3,700	-600	-16.7%	-700	-18.9%
Government	9,300	10,100	10,300	-800	-7.9%	-1000	-9.7%

## Annual Growth Rate Total Non-agricultural employment

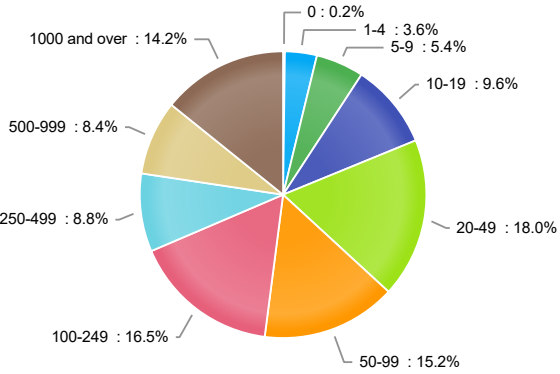


## Annual Growth Rate Total Non-agricultural employment table

Month	Employment Count	Annual Growth Rate
Apr-20	72900	-13.5%
Mar-20	82500	-2%
Feb-20	82900	-1.7%
Jan-20	82300	-1.4%
Dec-19	83600	-1.5%
Nov-19	83800	-0.7%
Oct-19	84000	0.4%
Sep-19	83100	-0.2%
Aug-19	83300	1.6%
Jul-19	83700	2.8%
Jun-19	83600	2.6%
May-19	84200	4.1%
Apr-19	84300	5%
Mar-19	84200	6.7%
Feb-19	84300	8.4%
Jan-19	83500	9%
Dec-18	84900	9.8%
Nov-18	84400	9.2%
Oct-18	83700	10%
Sep-18	83300	10.6%
Aug-18	82000	10.5%
Jul-18	81400	10.4%
Jun-18	81500	11.5%
May-18	80900	11.6%
Apr-18	80300	12.3%
Mar-18	78900	10.8%
Feb-18	77800	10.4%
Jan-18	76600	10.1%
Dec-17	77300	9.5%
Nov-17	77300	10.1%
Oct-17	76100	9%
Sep-17	75300	8%
Aug-17	74200	7.5%
Jul-17	73700	7.1%
Jun-17	73100	6.4%
May-17	72500	4.6%
Apr-17	71500	2.3%
Mar-17	71200	1.3%
Feb-17	70500	-1.3%
Jan-17	69600	-2.8%
Dec-16	70600	-2.6%
Nov-16	70200	-3.2%
Oct-16	69800	-4.9%
Sep-16	69700	-5.7%
Aug-16	69000	-7.3%
Jul-16	68800	-7.7%
Jun-16	68700	-9.2%
May-16	69300	-8.6%
Apr-16	69900	-9%
Mar-16	70300	-10.3%
Feb-16	71400	-9.8%
Jan-16	71600	-10.4%
Dec-15	72500	-11.5%
Nov-15	72500	-11.2%
Oct-15	73400	-9.7%
Sep-15	73900	-8.2%
Aug-15	74400	-6.4%
Jul-15	74500	-5.6%

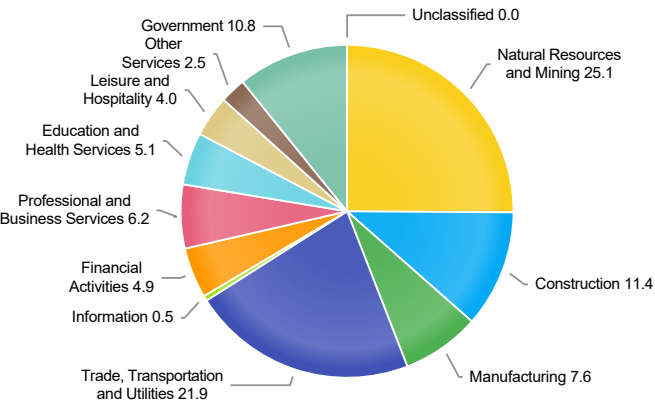
Month	Employment Count	Annual Growth Rate
Jun-15	75700	-3.6%
May-15	75800	-2.1%
Apr-15	76800	-0.3%
Mar-15	78400	2.3%
Feb-15	79200	4.1%
Jan-15	79900	6.5%
Dec-14	81900	8.6%
Nov-14	81600	8.8%
Oct-14	81300	8.7%
Sep-14	80500	8.2%
Aug-14	79500	7.9%
Jul-14	78900	6.9%
Jun-14	78500	6.7%
May-14	77400	4.6%
Apr-14	77000	4.2%
Mar-14	76600	4.1%
Feb-14	76100	3.3%
Jan-14	75000	3%
Dec-13	75400	2.4%
Nov-13	75000	1.9%
Oct-13	74800	0.8%
Sep-13	74400	0.9%
Aug-13	73700	1.7%
Jul-13	73800	2.1%
Jun-13	73600	2.2%
May-13	74000	2.9%
Apr-13	73900	3.5%
Mar-13	73600	3.7%
Feb-13	73700	5%
Jan-13	72800	5.2%
Dec-12	73600	5.4%
Nov-12	73600	6.2%
Oct-12	74200	7.5%
Sep-12	73700	8.2%
Aug-12	72500	7.4%
Jul-12	72300	7.7%
Jun-12	72000	7.8%
May-12	71900	8.3%
Apr-12	71400	8.7%
Mar-12	71000	9.1%
Feb-12	70200	9.7%
Jan-12	69200	9.7%
Dec-11	69800	10.4%
Nov-11	69300	10.4%
Oct-11	69000	10.6%
Sep-11	68100	10.2%
Aug-11	67500	11.2%
Jul-11	67100	10.9%
Jun-11	66800	10.2%
May-11	66400	10.1%
Apr-11	65700	9.1%
Mar-11	65100	8.7%
Feb-11	64000	7.9%
Jan-11	63100	7.7%
Dec-10	63200	6.2%
Nov-10	62800	5.9%
Oct-10	62400	5.6%
Sep-10	61800	5.3%
Aug-10	60700	4.1%
Jul-10	60500	2.9%
Jun-10	60600	2.2%
May-10	60300	1%
Apr-10	60200	-1%

Industry size class



Employees Per Firm	Employment In Size Class	Percentage Of Total Employment
0	177	0.2%
1-4	2907	3.6%
5-9	4376	5.4%
10-19	7742	9.6%
20-49	14513	18.0%
50-99	12220	15.2%
100-249	13328	16.5%
250-499	7104	8.8%
500-999	6772	8.4%
1000 and over	11453	14.2%

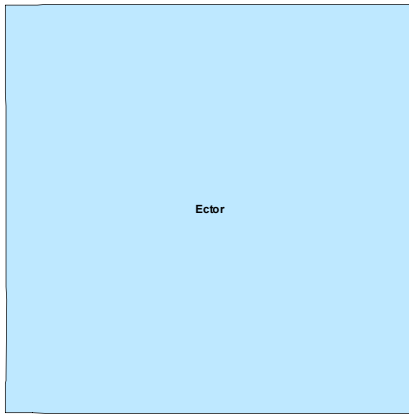
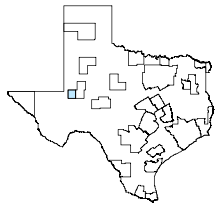
Wages by Industry (in millions) (4th Quarter 2019)



Industry Title	Wages in millions (\$)
Natural Resources and Mining	334.59
Construction	151.68
Manufacturing	101.11
Trade, Transportation and Utilities	291.74
Information	6.23
Financial Activities	64.68
Professional and Business Services	82.74
Education and Health Services	68.53
Leisure and Hospitality	52.94
Other Services	33.28
Government	144.19
Unclassified	0.48

## Odessa MSA

May 2020



### MSA Labor Force Statistics

	May-20	Apr-20	May-19	Yearly Change
Civilian Labor Force	84,591	79,892	87,802	-3,211
Employed	70,621	68,955	85,848	-15,227
Unemployed	13,970	10,937	1,954	12,016
Unemployment Rate	16.5%	13.7%	2.2%	14.3%

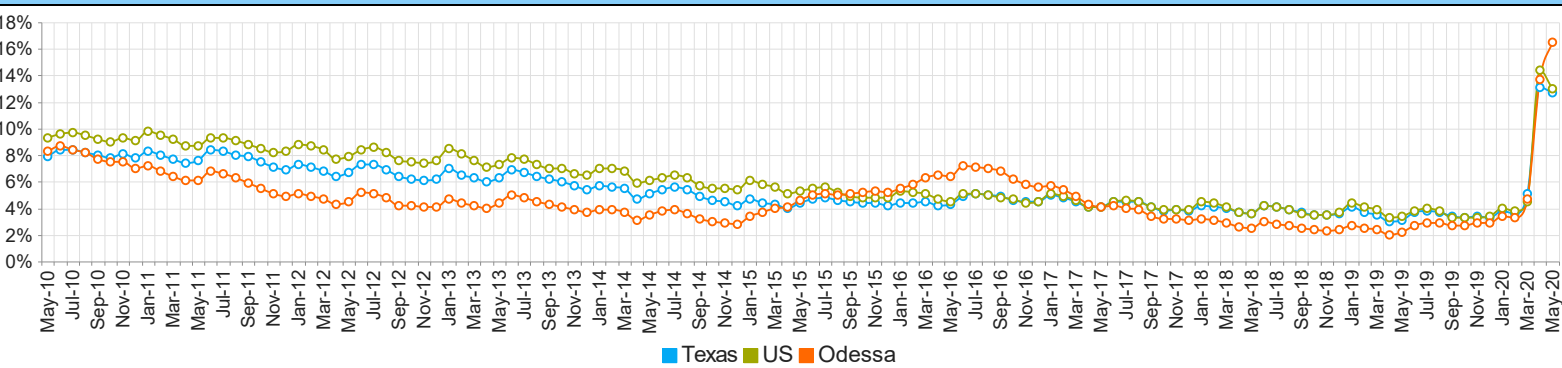
### Texas Labor Force Statistics

	May-20	Apr-20	May-19	Yearly Change
Civilian Labor Force	13,462,785	12,953,286	13,926,760	-463,975
Employed	11,752,162	11,259,524	13,491,168	-1,739,006
Unemployed	1,710,623	1,693,762	435,592	1,275,031
Unemployment Rate	12.7%	13.1%	3.1%	9.6%

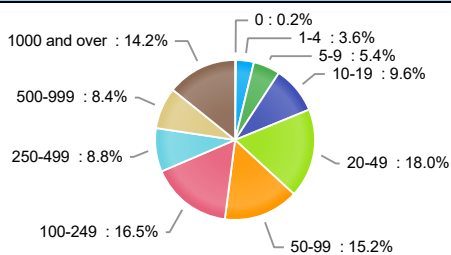
### US Labor Force Statistics

	May-20	Apr-20	May-19	Yearly Change
Civilian Labor Force	157,975,000	155,830,000	162,655,000	-4,680,000
Employed	137,461,000	133,326,000	157,152,000	-19,691,000
Unemployed	20,514,000	22,504,000	5,503,000	15,011,000
Unemployment Rate	13.0%	14.4%	3.4%	9.6%

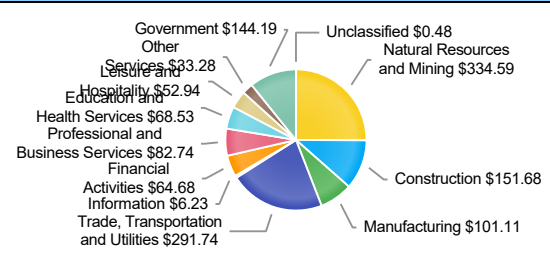
### Historical Unemployment Rates



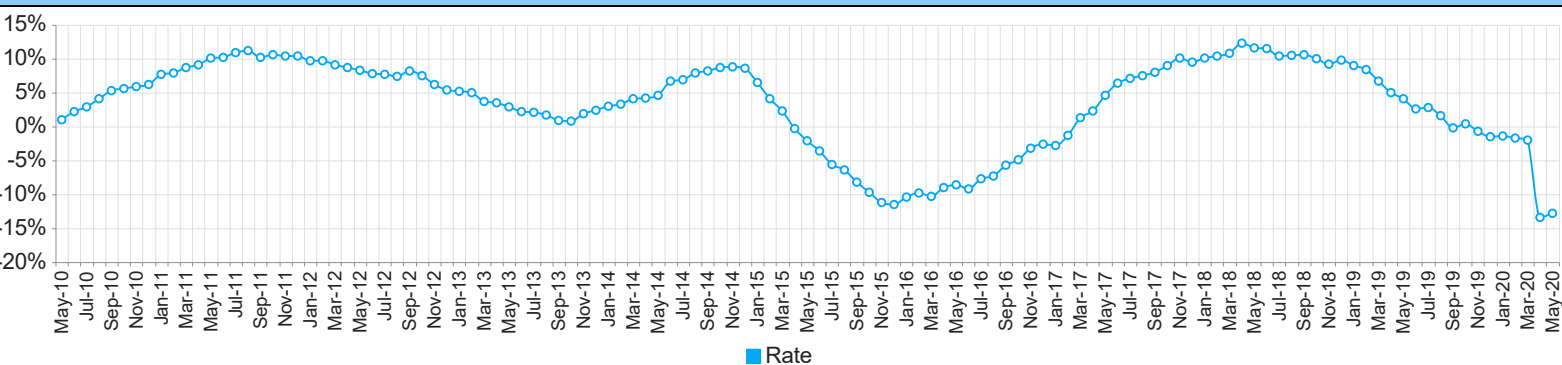
### Employment by Size Class (4th Quarter 2019)



### Wages by Industry (in millions) (4th Quarter 2019)



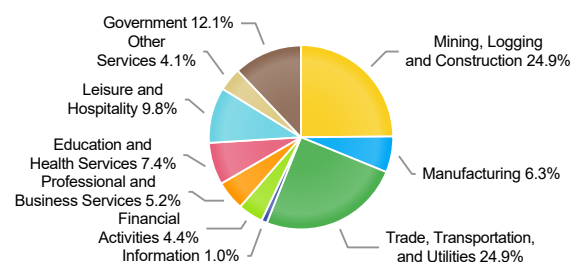
### Annual Growth Rate Total Non-agricultural employment



### Employment by Industry (May 2020)

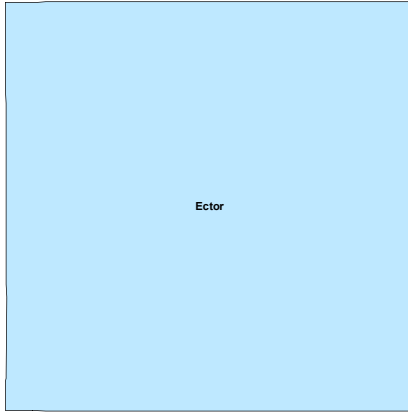
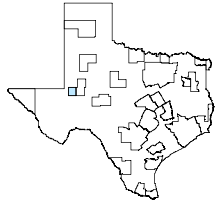
Industry	Current Month Employment	% Monthly Change	% Yearly Change
Total Nonfarm	73,400	0.5%	-12.8%
Mining, Logging and Construction	18,300	-4.2%	-19.4%
Manufacturing	4,600	2.2%	-13.2%
Trade, Transportation, and Utilities	18,300	1.7%	-3.7%
Information	700	0.0%	0.0%
Financial Activities	3,200	-8.6%	-11.1%
Professional and Business Services	3,800	8.6%	-17.4%
Education and Health Services	5,400	1.9%	3.8%
Leisure and Hospitality	7,200	16.1%	-20.0%
Other Services	3,000	3.4%	-21.1%
Government	8,900	-4.3%	-13.6%

### Employment by Industry (May 2020)



## Odessa MSA

June 2020



### MSA Labor Force Statistics

	Jun-20	May-20	Jun-19	Yearly Change
Civilian Labor Force	85,961	84,968	87,649	-1,688
Employed	74,822	70,951	85,252	-10,430
Unemployed	11,139	14,017	2,397	8,742
Unemployment Rate	13.0%	16.5%	2.7%	10.3%

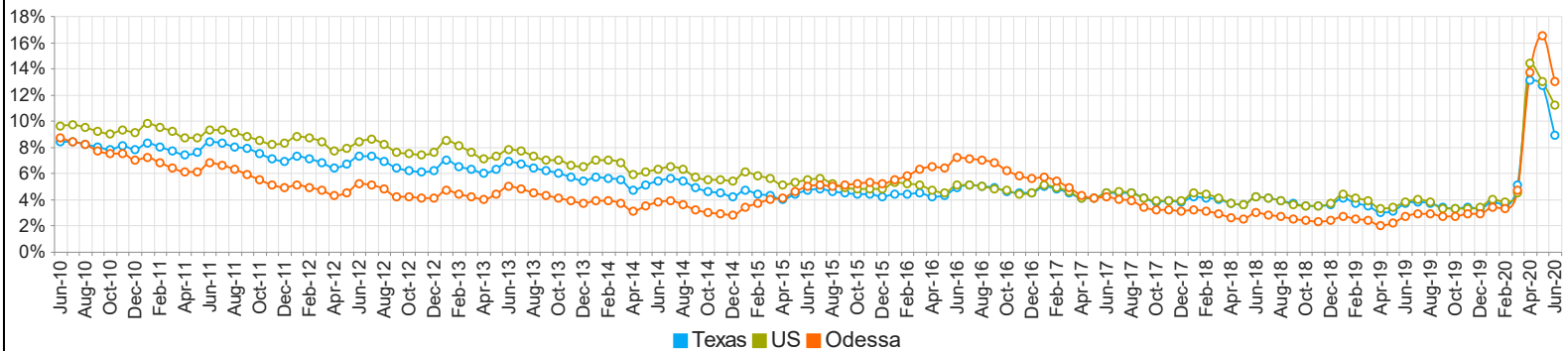
### Texas Labor Force Statistics

	Jun-20	May-20	Jun-19	Yearly Change
Civilian Labor Force	13,844,386	13,464,075	14,009,283	-164,897
Employed	12,612,804	11,752,881	13,489,259	-876,455
Unemployed	1,231,582	1,711,194	520,024	711,558
Unemployment Rate	8.9%	12.7%	3.7%	5.2%

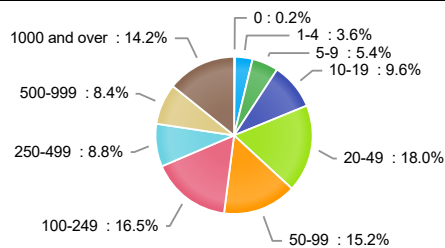
### US Labor Force Statistics

	Jun-20	May-20	Jun-19	Yearly Change
Civilian Labor Force	160,883,000	157,975,000	164,120,000	-3,237,000
Employed	142,811,000	137,461,000	157,828,000	-15,017,000
Unemployed	18,072,000	20,514,000	6,292,000	11,780,000
Unemployment Rate	11.2%	13.0%	3.8%	7.4%

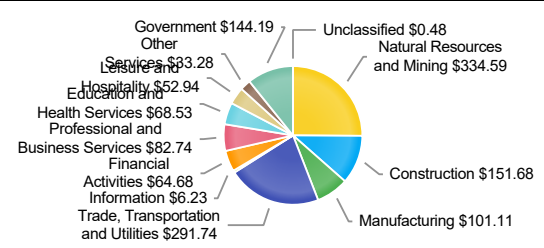
## Historical Unemployment Rates



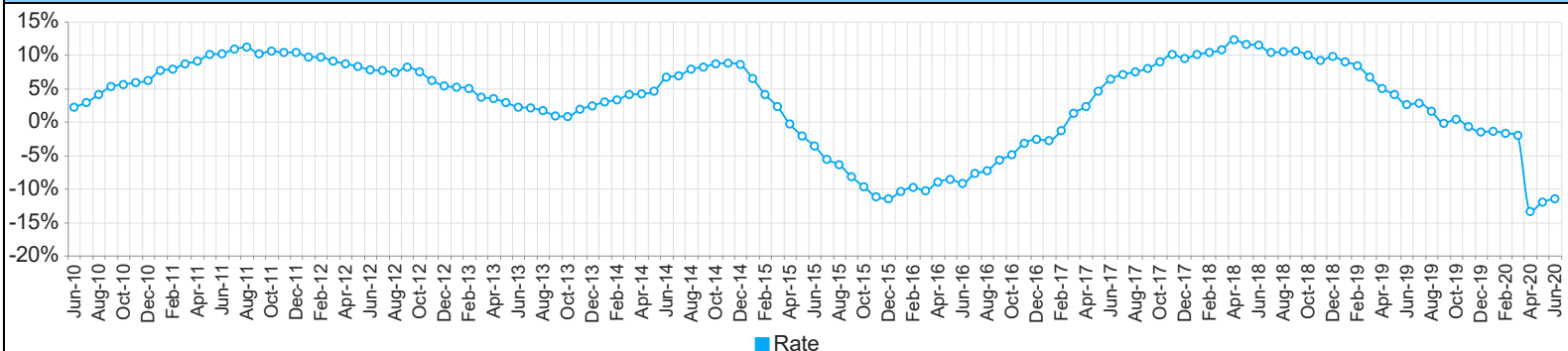
## Industry Size Class



## Wages by Industry (in millions) (4th Quarter 2019)



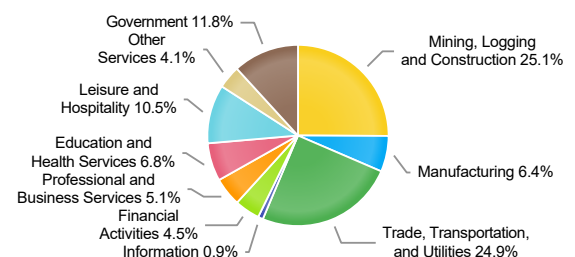
## Annual Growth Rate Total Non-agricultural employment

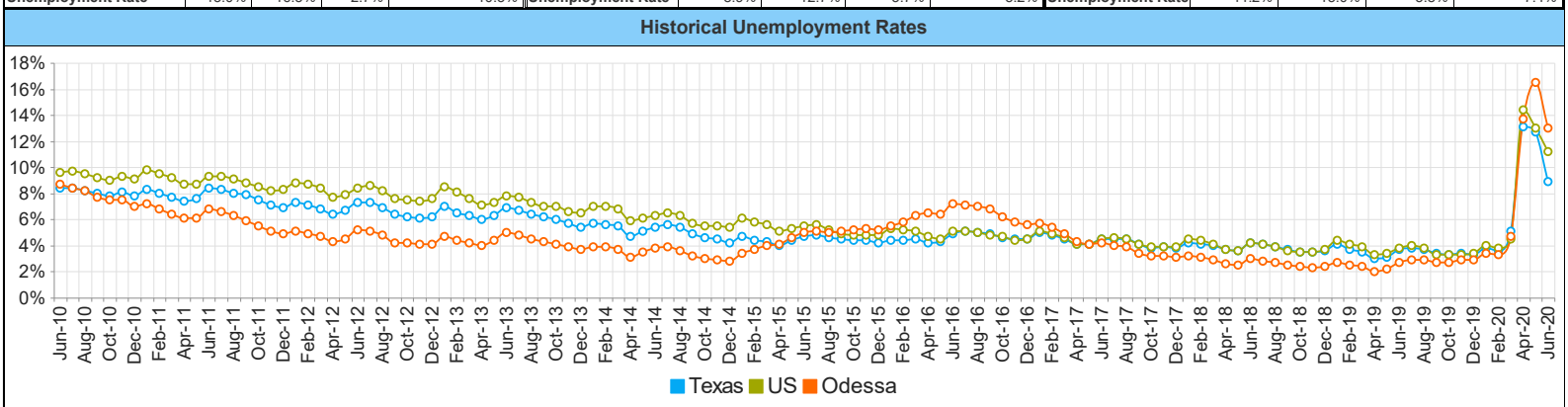
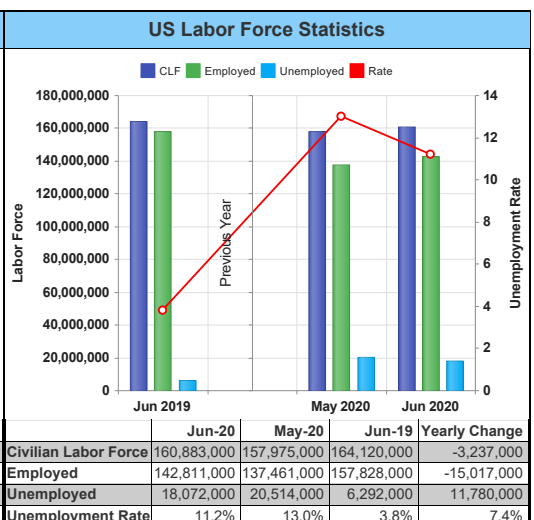
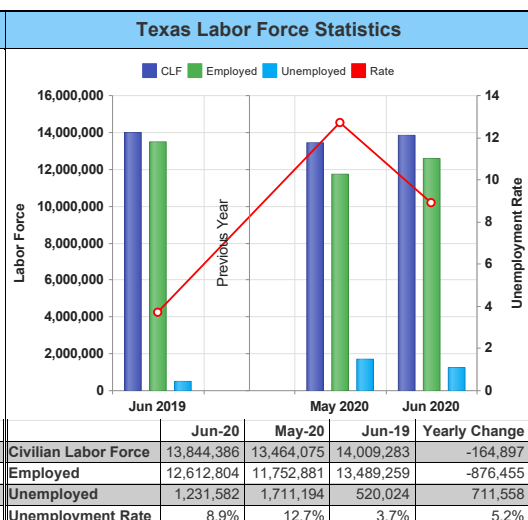
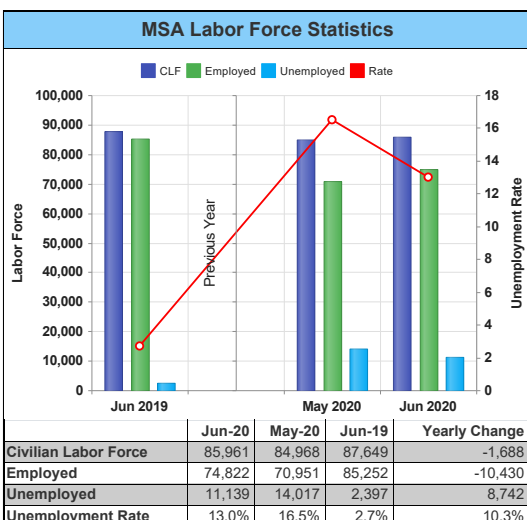


## Employment by Industry (June 2020)

Industry	Current Month Employment	% Monthly Change	% Yearly Change
Total Nonfarm	74,000	-0.1%	-11.5%
Mining, Logging and Construction	18,600	-1.1%	-17.3%
Manufacturing	4,700	2.2%	-9.6%
Trade, Transportation, and Utilities	18,400	0.5%	-2.1%
Information	700	0.0%	0.0%
Financial Activities	3,300	0.0%	-8.3%
Professional and Business Services	3,800	0.0%	-17.4%
Education and Health Services	5,000	-7.4%	-3.8%
Leisure and Hospitality	7,800	6.8%	-15.2%
Other Services	3,000	0.0%	-23.1%
Government	8,700	-2.2%	-12.1%

## Employment by Industry (June 2020)

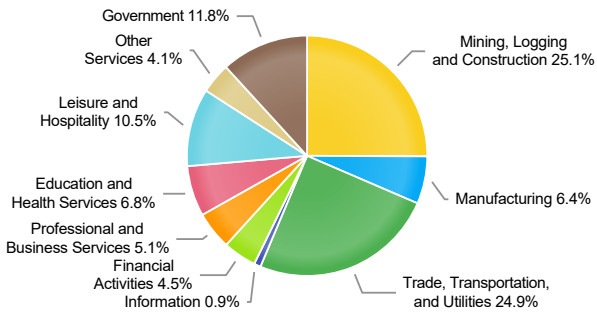




Months	MSA	Texas	US
Jun-20	13.0	8.9	11.2
May-20	16.5	12.7	13.0
Apr-20	13.7	13.1	14.4
Mar-20	4.7	5.1	4.5
Feb-20	3.3	3.6	3.8
Jan-20	3.4	3.8	4.0
Dec-19	2.9	3.3	3.4
Nov-19	2.9	3.4	3.3
Oct-19	2.7	3.3	3.3
Sep-19	2.7	3.4	3.3
Aug-19	2.9	3.7	3.8
Jul-19	2.9	3.8	4.0
Jun-19	2.7	3.7	3.8
May-19	2.2	3.1	3.4
Apr-19	2.0	3.0	3.3
Mar-19	2.4	3.5	3.9
Feb-19	2.5	3.7	4.1
Jan-19	2.7	4.1	4.4
Dec-18	2.4	3.6	3.7
Nov-18	2.3	3.5	3.5
Oct-18	2.4	3.5	3.5
Sep-18	2.5	3.7	3.6
Aug-18	2.7	3.9	3.9
Jul-18	2.8	4.1	4.1
Jun-18	3.0	4.2	4.2
May-18	2.5	3.6	3.6
Apr-18	2.6	3.7	3.7
Mar-18	2.9	4.0	4.1
Feb-18	3.1	4.1	4.4
Jan-18	3.2	4.2	4.5
Dec-17	3.1	3.8	3.9
Nov-17	3.2	3.9	3.9
Oct-17	3.2	3.8	3.9
Sep-17	3.4	4.1	4.1
Aug-17	3.9	4.5	4.5
Jul-17	4.0	4.5	4.6
Jun-17	4.2	4.5	4.5
May-17	4.1	4.1	4.1
Apr-17	4.3	4.1	4.1
Mar-17	4.9	4.5	4.6
Feb-17	5.4	4.8	4.9
Jan-17	5.7	5.0	5.1
Dec-16	5.6	4.5	4.5
Nov-16	5.8	4.5	4.4
Oct-16	6.2	4.6	4.7
Sep-16	6.8	4.9	4.8
Aug-16	7.0	5.0	5.0
Jul-16	7.1	5.1	5.1
Jun-16	7.2	4.9	5.1
May-16	6.4	4.3	4.5
Apr-16	6.5	4.2	4.7
Mar-16	6.3	4.5	5.1
Feb-16	5.8	4.4	5.2
Jan-16	5.5	4.4	5.3
Dec-15	5.2	4.2	4.8

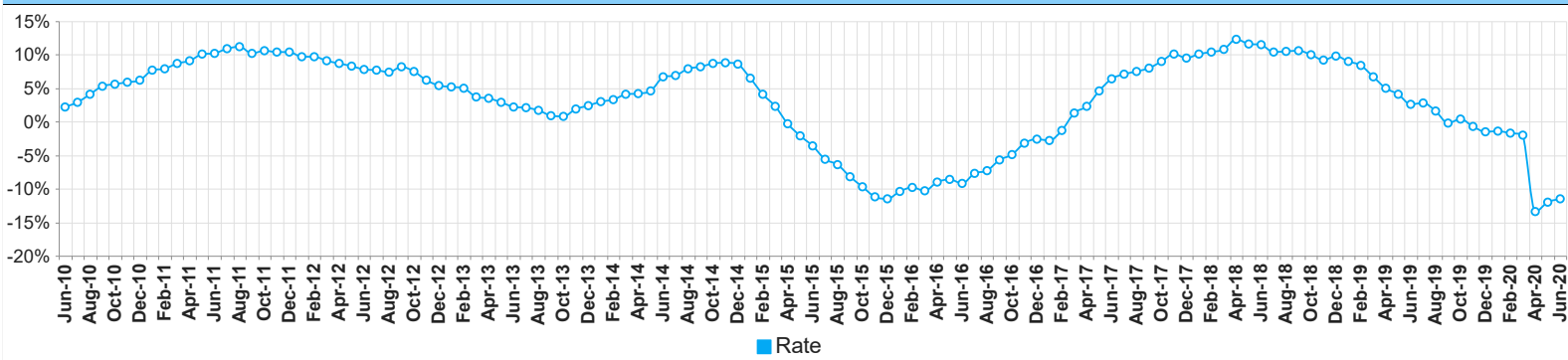
Months	MSA	Texas	US
Nov-15	5.3	4.4	4.8
Oct-15	5.2	4.4	4.8
Sep-15	5.1	4.5	4.9
Aug-15	5.0	4.6	5.2
Jul-15	5.1	4.8	5.6
Jun-15	5.0	4.7	5.5
May-15	4.6	4.4	5.3
Apr-15	4.1	4.0	5.1
Mar-15	4.0	4.3	5.6
Feb-15	3.7	4.4	5.8
Jan-15	3.4	4.7	6.1
Dec-14	2.8	4.2	5.4
Nov-14	2.9	4.5	5.5
Oct-14	3.0	4.6	5.5
Sep-14	3.2	4.9	5.7
Aug-14	3.6	5.4	6.3
Jul-14	3.9	5.6	6.5
Jun-14	3.8	5.4	6.3
May-14	3.5	5.1	6.1
Apr-14	3.1	4.7	5.9
Mar-14	3.7	5.5	6.8
Feb-14	3.9	5.6	7.0
Jan-14	3.9	5.7	7.0
Dec-13	3.7	5.4	6.5
Nov-13	3.9	5.7	6.6
Oct-13	4.1	6.0	7.0
Sep-13	4.3	6.2	7.0
Aug-13	4.5	6.4	7.3
Jul-13	4.8	6.7	7.7
Jun-13	5.0	6.9	7.8
May-13	4.4	6.3	7.3
Apr-13	4.0	6.0	7.1
Mar-13	4.2	6.3	7.6
Feb-13	4.4	6.5	8.1
Jan-13	4.7	7.0	8.5
Dec-12	4.1	6.2	7.6
Nov-12	4.1	6.1	7.4
Oct-12	4.2	6.2	7.5
Sep-12	4.2	6.4	7.6
Aug-12	4.8	6.9	8.2
Jul-12	5.1	7.3	8.6
Jun-12	5.2	7.3	8.4
May-12	4.5	6.7	7.9
Apr-12	4.3	6.4	7.7
Mar-12	4.7	6.8	8.4
Feb-12	4.9	7.1	8.7
Jan-12	5.1	7.3	8.8
Dec-11	4.9	6.9	8.3
Nov-11	5.1	7.1	8.2
Oct-11	5.5	7.5	8.5
Sep-11	5.9	7.9	8.8
Aug-11	6.3	8.0	9.1
Jul-11	6.6	8.3	9.3
Jun-11	6.8	8.4	9.3
May-11	6.1	7.6	8.7
Apr-11	6.1	7.4	8.7
Mar-11	6.4	7.7	9.2
Feb-11	6.8	8.0	9.5
Jan-11	7.2	8.3	9.8
Dec-10	7.0	7.8	9.1
Nov-10	7.5	8.1	9.3
Oct-10	7.5	7.8	9.0
Sep-10	7.7	8.0	9.2
Aug-10	8.2	8.2	9.5
Jul-10	8.4	8.4	9.7
Jun-10	8.7	8.4	9.6

### Employment by Industry



Industry	Jun-20	May-20	Jun-19	Monthly Change	Monthly Percent Change	Yearly Change	Yearly Percent Change
Total Nonfarm	74,000	74,100	83,600	-100	-0.1%	-9600	-11.5%
Mining, Logging and Construction	18,600	18,800	22,500	-200	-1.1%	-3900	-17.3%
Manufacturing	4,700	4,600	5,200	100	2.2%	-500	-9.6%
Trade, Transportation, and Utilities	18,400	18,300	18,800	100	0.5%	-400	-2.1%
Information	700	700	700	0	0.0%	0	0.0%
Financial Activities	3,300	3,300	3,600	0	0.0%	-300	-8.3%
Professional and Business Services	3,800	3,800	4,600	0	0.0%	-800	-17.4%
Education and Health Services	5,000	5,400	5,200	-400	-7.4%	-200	-3.8%
Leisure and Hospitality	7,800	7,300	9,200	500	6.8%	-1400	-15.2%
Other Services	3,000	3,000	3,900	0	0.0%	-900	-23.1%
Government	8,700	8,900	9,900	-200	-2.2%	-1200	-12.1%

### Annual Growth Rate Total Non-agricultural employment

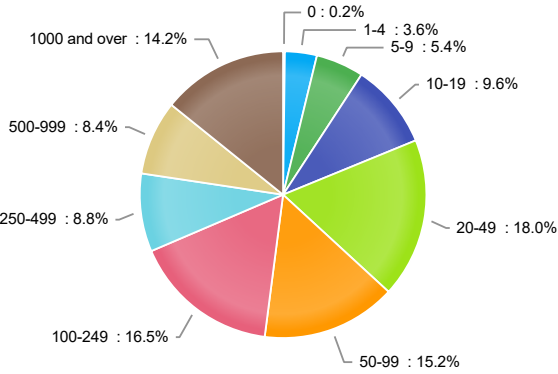


### Annual Growth Rate Total Non-agricultural employment table

Month	Employment Count	Annual Growth Rate
Jun-20	74000	-11.5%
May-20	74100	-12%
Apr-20	73000	-13.4%
Mar-20	82500	-2%
Feb-20	82900	-1.7%
Jan-20	82300	-1.4%
Dec-19	83600	-1.5%
Nov-19	83800	-0.7%
Oct-19	84000	0.4%
Sep-19	83100	-0.2%
Aug-19	83300	1.6%
Jul-19	83700	2.8%
Jun-19	83600	2.6%
May-19	84200	4.1%
Apr-19	84300	5%
Mar-19	84200	6.7%
Feb-19	84300	8.4%
Jan-19	83500	9%
Dec-18	84900	9.8%
Nov-18	84400	9.2%
Oct-18	83700	10%
Sep-18	83300	10.6%
Aug-18	82000	10.5%
Jul-18	81400	10.4%
Jun-18	81500	11.5%
May-18	80900	11.6%
Apr-18	80300	12.3%
Mar-18	78900	10.8%
Feb-18	77800	10.4%
Jan-18	76600	10.1%
Dec-17	77300	9.5%
Nov-17	77300	10.1%
Oct-17	76100	9%
Sep-17	75300	8%
Aug-17	74200	7.5%
Jul-17	73700	7.1%
Jun-17	73100	6.4%
May-17	72500	4.6%
Apr-17	71500	2.3%
Mar-17	71200	1.3%
Feb-17	70500	-1.3%
Jan-17	69600	-2.8%
Dec-16	70600	-2.6%
Nov-16	70200	-3.2%
Oct-16	69800	-4.9%
Sep-16	69700	-5.7%
Aug-16	69000	-7.3%
Jul-16	68800	-7.7%
Jun-16	68700	-9.2%
May-16	69300	-8.6%
Apr-16	69900	-9%
Mar-16	70300	-10.3%
Feb-16	71400	-9.8%
Jan-16	71600	-10.4%
Dec-15	72500	-11.5%
Nov-15	72500	-11.2%
Oct-15	73400	-9.7%
Sep-15	73900	-8.2%

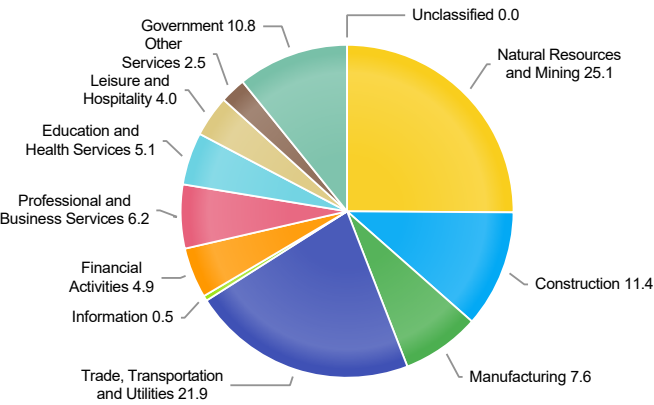
Month	Employment Count	Annual Growth Rate
Aug-15	74400	-6.4%
Jul-15	74500	-5.6%
Jun-15	75700	-3.6%
May-15	75800	-2.1%
Apr-15	76800	-0.3%
Mar-15	78400	2.3%
Feb-15	79200	4.1%
Jan-15	79900	6.5%
Dec-14	81900	8.6%
Nov-14	81600	8.8%
Oct-14	81300	8.7%
Sep-14	80500	8.2%
Aug-14	79500	7.9%
Jul-14	78900	6.9%
Jun-14	78500	6.7%
May-14	77400	4.6%
Apr-14	77000	4.2%
Mar-14	76600	4.1%
Feb-14	76100	3.3%
Jan-14	75000	3%
Dec-13	75400	2.4%
Nov-13	75000	1.9%
Oct-13	74800	0.8%
Sep-13	74400	0.9%
Aug-13	73700	1.7%
Jul-13	73800	2.1%
Jun-13	73600	2.2%
May-13	74000	2.9%
Apr-13	73900	3.5%
Mar-13	73600	3.7%
Feb-13	73700	5%
Jan-13	72800	5.2%
Dec-12	73600	5.4%
Nov-12	73600	6.2%
Oct-12	74200	7.5%
Sep-12	73700	8.2%
Aug-12	72500	7.4%
Jul-12	72300	7.7%
Jun-12	72000	7.8%
May-12	71900	8.3%
Apr-12	71400	8.7%
Mar-12	71000	9.1%
Feb-12	70200	9.7%
Jan-12	69200	9.7%
Dec-11	69800	10.4%
Nov-11	69300	10.4%
Oct-11	69000	10.6%
Sep-11	68100	10.2%
Aug-11	67500	11.2%
Jul-11	67100	10.9%
Jun-11	66800	10.2%
May-11	66400	10.1%
Apr-11	65700	9.1%
Mar-11	65100	8.7%
Feb-11	64000	7.9%
Jan-11	63100	7.7%
Dec-10	63200	6.2%
Nov-10	62800	5.9%
Oct-10	62400	5.6%
Sep-10	61800	5.3%
Aug-10	60700	4.1%
Jul-10	60500	2.9%
Jun-10	60600	2.2%

Industry size class



Employees Per Firm	Employment In Size Class	Percentage Of Total Employment
0	177	0.2%
1-4	2907	3.6%
5-9	4376	5.4%
10-19	7742	9.6%
20-49	14513	18.0%
50-99	12220	15.2%
100-249	13328	16.5%
250-499	7104	8.8%
500-999	6772	8.4%
1000 and over	11453	14.2%

Wages by Industry (in millions) (4th Quarter 2019)



Industry Title	Wages in millions (\$)
Natural Resources and Mining	334.59
Construction	151.68
Manufacturing	101.11
Trade, Transportation and Utilities	291.74
Information	6.23
Financial Activities	64.68
Professional and Business Services	82.74
Education and Health Services	68.53
Leisure and Hospitality	52.94
Other Services	33.28
Government	144.19
Unclassified	0.48